



Wyoming Winter Wheat Varieties 2012



Wyoming Field Office

Cooperating with the Wyoming Business Council Agribusiness Division
PO Box 1148 · Cheyenne, WY 82003
307-432-5600 • FAX 307-432-5598 • www.nass.usda.gov/wy

March 26, 2012

Dear Wyoming Agriculturalist,

Buckskin was once again the most popular winter wheat variety seeded in Wyoming for the 2012 crop with 48.1 percent of the total winter wheat acreage. Pronghorn was a distant second followed by Goodstreak. The data for this release was collected during the 2011 December Ag Survey, conducted by the USDA/NASS Wyoming Field Office. Thank you to the Wyoming Business Council - Agribusiness Division for providing funding.

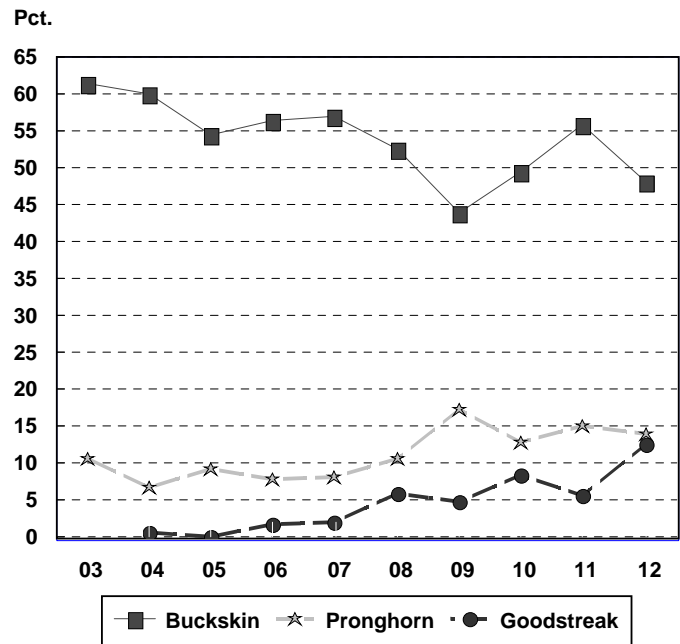
Reports from producers across the State accounted for 38 percent of the 160,000 total acres seeded in Wyoming. Estimates of the percentage of acreage seeded by variety are based on these reports.

I would like to thank all the Wyoming producers whose continued cooperation makes this information possible. If you have any questions about this or any other report, please call us toll-free at 1-800-892-1660.

Sincerely,

Todd Ballard, Director

Winter Wheat Varieties
Percent of Total Acreage Seeded by Top Varieties,
Wyoming, Crop Years 2003-2012



BUCKSKIN REMAINS DOMINANT WINTER WHEAT VARIETY PLANTED

Buckskin continues to reflect the largest winter wheat acreage seeded in Wyoming, accounting for 48.1 percent of the 160,000 acres planted for harvest in 2012. This is the 29th consecutive year (since 1983) that Buckskin has been the most popular variety.

Pronghorn, at 13.9 percent, and **Goodstreak**, at 12.7 percent, were the second and third most popular varieties for the 2012 winter wheat crop. The next leading varieties were Genou, Hatcher, and Ogallala on 3.5, 2.8, and 2.6 percent of the State's acreage, respectively.

Other varieties with one percent or more of the acreage were Infinity CL, Centerfield, Jerry, Yellowstone, Akron, Cheyenne, Snowmass and Settler CL.

In southeast Wyoming, Buckskin was planted on 50.0 percent of the acreage.

**WINTER WHEAT: PERCENT OF TOTAL ACREAGE SEEDED BY VARIETY,
WYOMING, CROP YEARS 2003-2012**

Variety	2003	2004	2005	2006	2007	2008	2009	2010	2011	2012
Buckskin	61.5	60.1	54.7	56.5	57.1	52.7	44.1	49.6	56.0	48.1
Pronghorn	10.8	6.7	9.3	7.9	8.3	10.7	17.4	13.0	15.1	13.9
Goodstreak		0.7	0.1	1.8	2.0	5.9	4.8	8.6	5.8	12.7
Genou								1.5	0.4	3.5
Hatcher								0.5	0.8	2.8
Ogallala	0.9	1.6	1.0	0.8	0.8	1.8	0.5	1.3	2.0	2.6
Infinity CL							0.3	0.1	1.9	2.5
Centerfield										2.1
Jerry			1.4	1.7	2.3	1.6	1.6	2.1	1.4	1.8
Yellowstone						0.9	0.3	0.6	5.3	1.7
Akron	8.1	7.0	7.9	8.6	6.4	1.4	5.9	5.5	2.7	1.7
Cheyenne	1.0	2.6	2.6	4.8	3.8	2.0	2.2	5.1		1.3
Snowmass										1.3
Settler CL									0.6	1.0
Willow Creek					0.1			0.2	0.3	0.6
Others 1/	17.7	21.3	23.0	17.9	19.2	23.0	22.9	11.9	7.7	2.4
Total	100.0	100.0	100.0	100.0	100.0	100.0	100.0	100.0	100.0	100.0

1/Other varieties for 2012 include Ankor, Armour, Jagalene, Prairie Red, Prowers, Tam 111, Wesley, and Winterhawk.

**WINTER WHEAT: PERCENT OF TOTAL ACREAGE SEEDED BY VARIETY WITHIN DISTRICT,
WYOMING, 2012 CROP 1/**

Variety	District 2 Northeast 2/	District 5 Southeast 3/	State
Buckskin	34.3	50.0	48.1
Pronghorn	--	15.6	13.9
Goodstreak	--	14.3	12.7
Genou	--	3.9	3.5
Hatcher	--	3.1	2.8
Ogallala	--	2.9	2.6
Infinity CL	20.4	0.5	2.5
Centerfield	9.0	1.3	2.1
Jerry	18.4	--	1.8
Yellowstone	7.9	--	1.7
Akron	--	1.9	1.7
Cheyenne	--	1.5	1.3
Snowmass	--	1.5	1.3
Settler CL	--	1.1	1.0
Willow Creek	5.7	--	0.6
Others 4/	4.3	2.4	2.4
Total	100.0	100.0	100.0

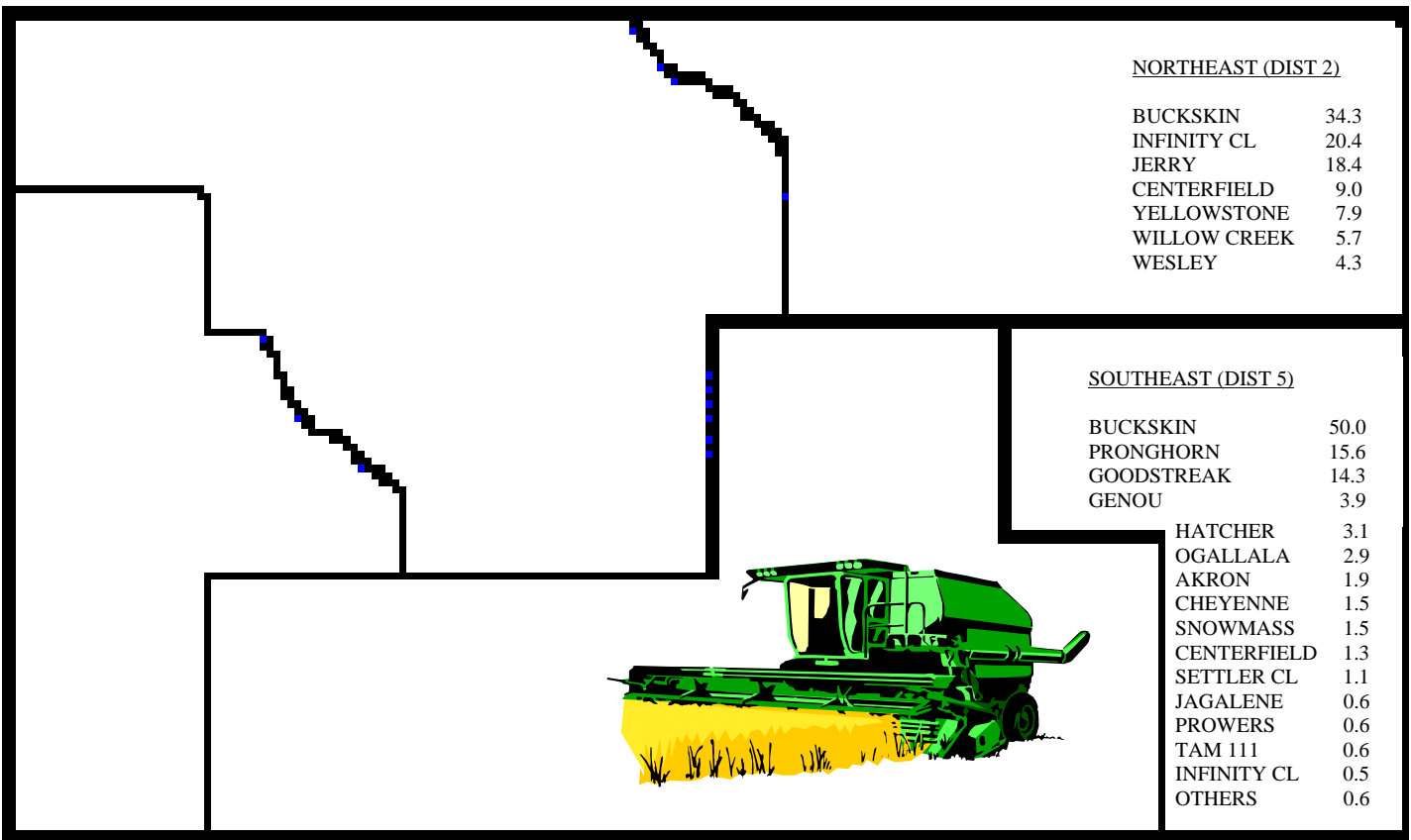
1/ Districts 1, 3, and 4 not published to protect confidentiality.

2/ District 2 includes Campbell, Crook, Johnson, Sheridan, and Weston Counties.

3/ District 5 includes Converse, Goshen, Laramie, Niobrara, and Platte Counties.

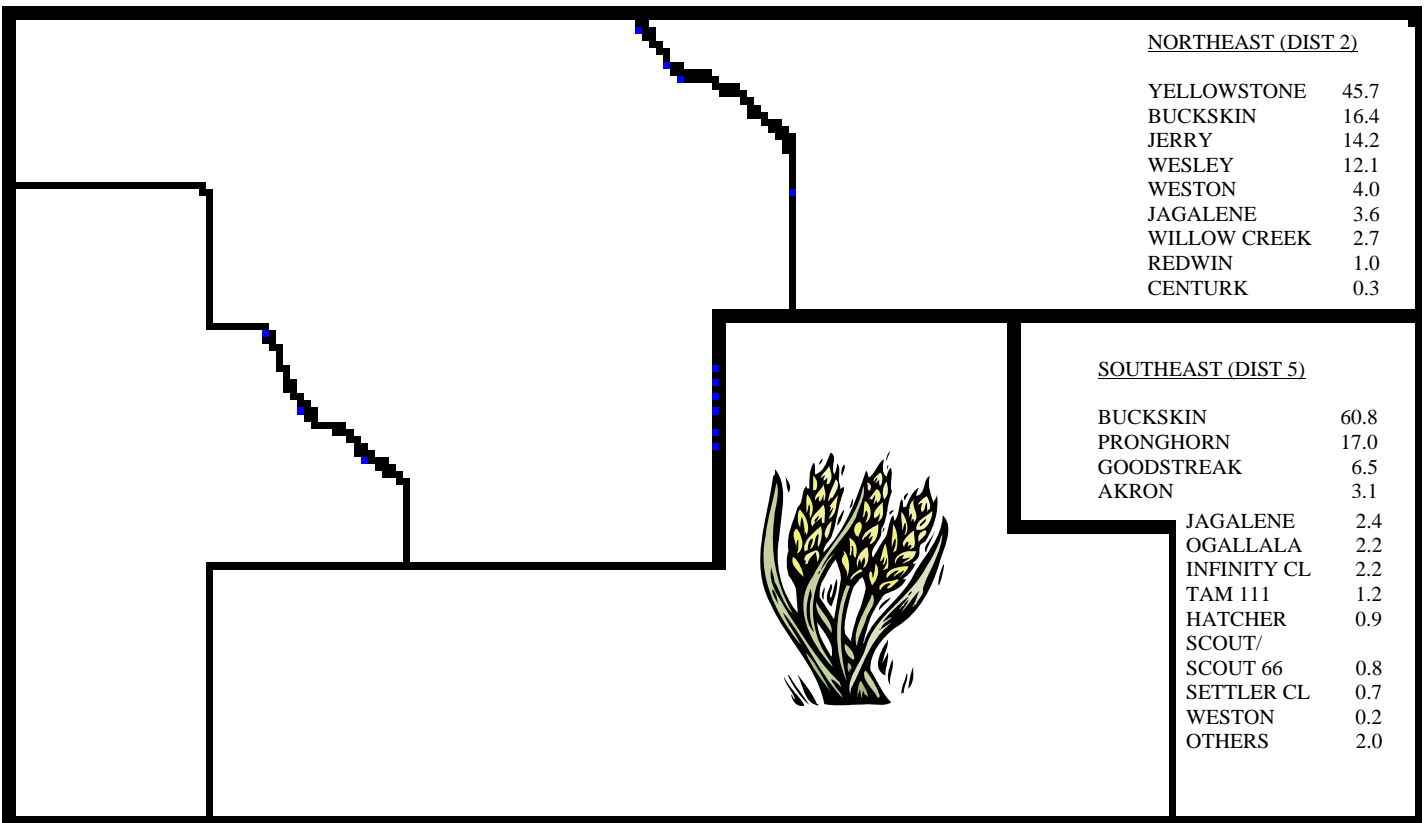
4/ Other varieties for 2012 include Ankor, Armour, Jagalene, Prairie Red, Prowers, Tam 111, Wesley, and Winterhawk.

**WINTER WHEAT VARIETIES: PERCENT PLANTED IN 2012,
BY AGRICULTURAL STATISTICS DISTRICT, WYOMING 1/**



1/ Districts 1, 3, and 4 not published to protect confidentiality.

**WINTER WHEAT VARIETIES: PERCENT PLANTED IN 2011,
BY AGRICULTURAL STATISTICS DISTRICT, WYOMING 1/**



1/ Districts 1, 3, and 4 not published to protect confidentiality.

**WINTER WHEAT: ACREAGE, PRODUCTION, AND VALUE
WYOMING, 1992-2012**

Year	Acres Planted	Acres Harvested	Yield	Production 1,000 bu.	Value \$ 1,000
1992	220,000	200,000	25.0	5,000	15,500
1993	220,000	200,000	28.0	5,600	17,920
1994	200,000	180,000	24.0	4,320	15,336
1995	210,000	200,000	36.0	7,200	33,120
1996	230,000	210,000	25.0	5,250	21,000
1997	240,000	225,000	31.0	6,975	21,623
1998	220,000	200,000	32.0	6,400	15,872
1999	200,000	185,000	33.0	6,105	12,943
2000	190,000	170,000	24.0	4,080	11,016
2001	160,000	120,000	24.0	2,880	7,776
2002	150,000	125,000	19.0	2,375	8,788
2003	160,000	145,000	27.0	3,915	13,311
2004	150,000	135,000	26.0	3,510	11,232
2005	160,000	145,000	30.0	4,350	15,225
2006	150,000	135,000	27.0	3,645	16,694
2007	140,000	125,000	25.0	3,125	20,875
2008	150,000	135,000	28.0	3,780	24,268
2009	155,000	132,000	38.0	5,016	22,321
2010	165,000	145,000	32.0	4,640	26,123
2011	150,000	130,000	34.0	4,420	28,730
2012	160,000	1/	2/	2/	3/

1/Preliminary estimate released June 29, 2012.

2/Final estimate released September 28, 2012.

3/Final estimate released February 2013.