



Wisconsin Crop Weather

Compiled by the Wisconsin Agricultural Statistics Service

July 14, 2003

Vol. 03, No. 15

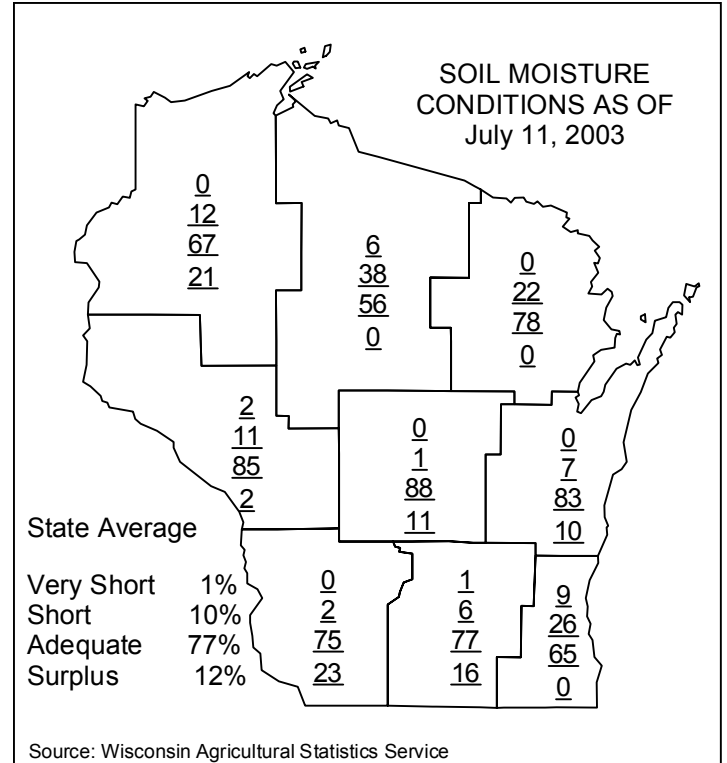
Precipitation and Seasonal Temperatures Push Crops

Typical summer weather has arrived in the Badger State. Rains were a common occurrence over most of the state for the past week. Precipitation amounts were mostly manageable with some scattered heavy rains. Rainfall for the week was in the one to two inch range. There were an average of 3.1 days suitable for fieldwork between showers. Soil moisture conditions averaged 1% very short, 10% short, 77% adequate, and 12% surplus. The scattered showers and warm temperatures advanced crop growth. Temperatures for the week were 3-4 degrees below normal, but were sufficient for good growth. Pasture field conditions were reported 1% very poor, 3% poor, 28% fair, 53% good, and 15% excellent.

Corn responded to added moisture levels and favorable temperatures by shooting toward the sky. Average height of corn gained 19 inches for the week to average 50 inches. The crop condition was rated 82% good to excellent. Late planted fields gained significant ground on early planted fields. Many areas will see corn tasseling soon. **Soybeans** had a great week of development also. Fields showed good growth and reports of soybeans blooming reached 14%, equal to the 5-year average, but slightly behind last year. Soybean condition was ranked at 80% good to excellent. Most corn and soybeans have canopied the ground, but weeds are still reported to be causing some problems.

Second crop **hay** harvest experienced problems with the scattered showers throughout the week. Harvest of second crop at 29% complete, was behind both last year at 34% and the 5-year average of 43%. Leafhoppers are present in many areas of the state, with spraying being done to control problem populations. **Oats** were mostly headed out across the state and turning color in most areas. Harvest of oatlage continued. **Winter wheat** is also turning color, with harvest not too far off. Lodging of small grains from scattered storms was reported. There are some concerns over continued rain causing scab problems.

The rains hampered **strawberry** harvest, but the crop was reported to have very good quantity and quality. Portage County reported good **potato** condition with no late blight. **Peas** continue to be harvested in canning areas. Early **sweet corn** is starting to show tassels. Buffalo County reported a good looking **apple** crop.

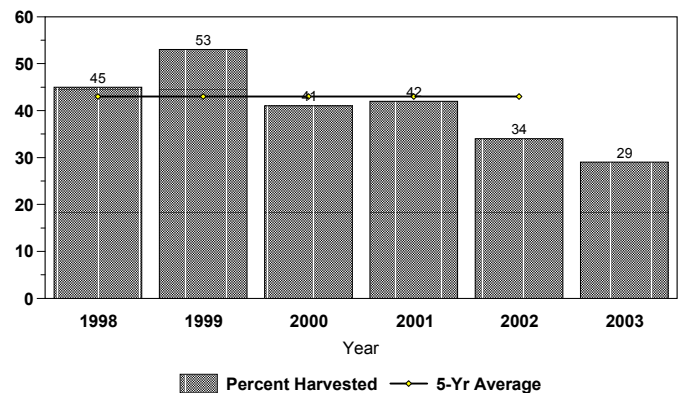


Wisconsin Crop Conditions as of July 11, 2003

Item	Very poor	Poor	Fair	Good	Excellent
	Percent				
Pasture	1	3	28	53	15
Winter wheat	1	3	13	56	27
Oat	0	2	23	54	21
Corn	1	3	14	55	27
Soybeans	1	4	15	55	25

Percentage of Second Crop Hay Harvested

Wisconsin - July 13, 1998 - 2003



Wisconsin Crop Progress, July 13, 2003

Crop and percent of acreage	District average									State average		
	NW	NC	NE	WC	C	EC	SW	SC	SE	This year	Last year	5-year average
Oats headed	89	95	94	96	98	93	97	99	99	95	85	93
Average height of corn	44	46	38	55	45	45	55	53	47	50	48	52
Soybeans blooming	10	8	7	14	16	13	18	15	13	14	21	14
Second cutting hay	21	24	20	35	33	29	37	33	30	29	34	43

Quotes from Farm Reporters and County Ag Agents

BARRON-A.B.: Corn has been making remarkable progress over the past week. Rainfall has been widespread and ample. Most of the corn crop is between V6 and V9. Weeds are also growing well and Roundup Ready corn has not been ideal with many acres needing multiple applications without residual herbicides in the tank mix. Wheat is showing signs of scab from the recent rains. Second cut hay looks to be a little better than first crop, although, potato leafhoppers have been taking their toll on many acres. Some spraying for them before harvest or just after depending on crop stage.

RUSK-G.P.: Corn is variable across the area. Some looks quite good, other acreage is very poor. Overall, soybeans look better than corn, probably because of later planting. Oats look better than the past two years, but still not good. Second crop hay is just starting here but comments are good. Quality, and most important, quantity of the second crop hay is good compared to first crop hay. Some spraying for leaf hoppers, but close enough to second crop hay to wait and assess third crop hay.

MARATHON-M.K.: Short on feed. Second crop hay is short, lots of bugs. Corn is coming on good.

ONEIDA-P.L.: Hot weather boosted the corn, but the dry conditions are on the verge of creating problems. Hearing reports of forty percent yield reductions in first crop hay. Rye is turning. Oats may be light with the dry weather.

FOREST-A.K.: Second crop hay very short, no rain.

SHAWANO-B.R.: Second crop hay is about ready to harvest for many; leafhopper activity has really exploded.

BUFFALO-R.S.: Corn looks ready to silk. Small grains look good, but lodging. Hay is good but too wet to harvest. Pasture conditions are good as a result of a wet July.

JACKSON-W.E.: Saw some corn this week that was over eight feet tall.

PORTAGE-D.Z.: Potatoes are still looking good, no late blight reported yet. Pea harvest will probably get underway shortly in the area. Second cutting of hay underway but on hold due to rain. Short crop will mean lower yields. Rye fields starting to turn color.

WAUPACA-D.L.H.: Warm weather has boosted corn and soybean growth. Winter wheat is nearing ripe stage. Quantity of second crop hay slightly below normal.

FOND DU LAC-E.A.: Corn and soybeans have improved a great deal over the past week. Second crop hay is a good crop. Winter wheat looks good.

WINNEBAGO-R.H.: Corn and soybeans look very good, saw some tassels on a field of corn. Soybeans are starting to flower on some fields and are growing very rapidly with the extra moisture and warm days and nights. Farmers are just starting to cut second crop alfalfa. It has been raining almost every day which has slowed haying to a standstill.

GRANT-E.B.: Hot and humid with rain the last eight days has ruined a lot of second crop hay. Hay that was cut is rotten and the quality is no good. Corn and soybeans have benefitted from the weather and have caught up to normal.

LAFAYETTE-M.R.: Corn and soybeans have virtually all of their original yield potentials available. Many fields of small grains have lodged.

DANE-D.F.: Corn is nearing silk stage. Rain is needed to ensure corn pollination. Second crop hay harvest is continuing with good weather this past weekend to help with curing. Quantity of second crop hay is mixed while quality is starting to deteriorate with warm temperatures and rain hampering harvest.

ROCK-C.H.: Had some rain every day this week. Hot weather at the beginning of the week made crops grow fast.

RACINE-L.F.: Rains have made the crops. Now we need the sun and heat. Wheat getting ready for harvest in ten days to two weeks.

WALWORTH-E.A.: Farmers can not make hay, too wet. Corn has jumped two feet with the heat and sunshine. Corn covers the rows. Late planted corn is knee high.



Wisconsin Agricultural Statistics Service
P.O. Box 8934
Madison, WI 53708-8934
(608) 224-4848
<http://www.nass.usda.gov/wi/rlsetoc.htm>

Robert J. Battaglia
State Statistician

Bob Hunter
Statistician

This report has been made possible through the cooperative efforts of the U.S. Department of Agriculture, and the Wisconsin Department of Agriculture, Trade and Consumer Protection, and the National Weather Service.

Wisconsin Weekly Weather, Selected Cities, Ending as of 7:00 a.m. on July 13, 2003

City	Temperature						Growing degree days (modified base 50) 1/		Precipitation			
	Avg. max.	Avg. min.	High max.	Low min.	Avg.	Avg dep. from normal*	Mar. 1 to July 12	Mar. 1 to July 12 normal *	Last week	Since June 1	June 1 dep. from normal*	Year to date
Eau Claire	76	58	83	53	67	-4	1264	1152	0.90	4.92	-0.86	15.80
Green Bay	75	58	85	54	66	-4	1014	1047	1.50	5.25	0.48	14.27
La Crosse	78	62	85	56	70	-4	1364	1301	0.83	4.15	-1.53	14.17
Madison	76	59	87	52	68	-3	1204	1271	1.62	4.22	-1.40	13.46
Milwaukee	77	61	85	56	69	-3	991	n.a.	1.70	3.49	-1.49	12.18

1/Formula used: GDD = (daily maximum (86°) + daily minimum (50°))/2-50°; where 86° is used if the maximum exceeds 86° and 50° is used if the minimum falls below 50°. *Normal based on 1961-90 data. Source: NCEP/NOAA Climate Prediction Center <<http://www.cpc.ncep.noaa.gov>>. N.a. = not available. T = trace.