



# ANNUAL CATTLE REVIEW

## TEXAS AND U.S. INVENTORY

Data Source: USDA-NASS *January Cattle Report*

The Texas January 1, 2022 inventory of all cattle and calves, at 12.7 million head, was down 400 thousand from the January 1, 2021 inventory. All cows and heifers that calved, at 5.10 million head, were down 3 percent. Bulls, at 330 thousand head, were down 8 percent from January 1, 2021. All heifers over 500 pounds, at 2.59 million head, were down 5 percent from last year. Steers over 500 pounds, at 2.63 million head, were up slightly from January 1, 2021. The 2021 annual calf crop for Texas, at 4.60 million head, was down 4 percent from the previous year.

The United States all cattle and calves inventory went down 2 percent; totaling 91.9 million head on January 1, 2022. All cows and heifers that have calved, at 39.5 million head, were down 2 percent from the 40.3 million head on January 1, 2021. The 2021 annual calf crop for the United States was estimated at 35.1 million head, down 1 percent from the previous year.

**Cattle and Calves: Inventory by Class and Calf Crop,  
Texas and United States, January 1, 2021-2022**

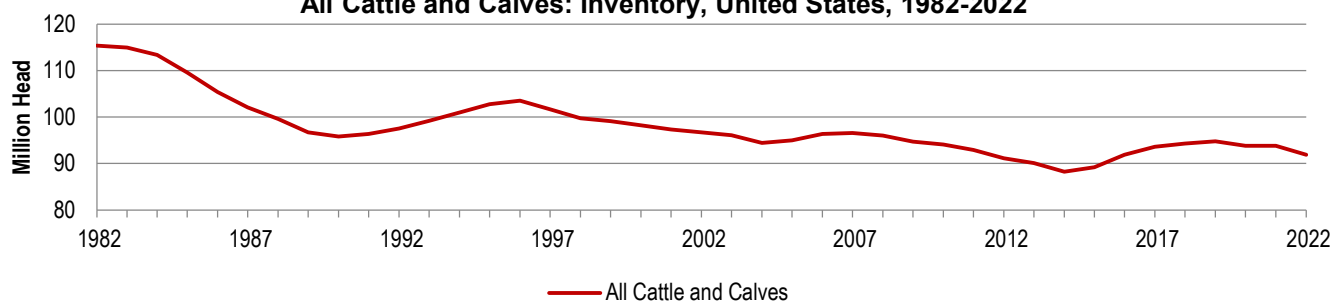
Class	Texas			United States <sup>1</sup>		
	2021	2022	Percent of Previous Year	2021	2022	Percent of Previous Year
	<i>1,000 Head</i>	<i>1,000 Head</i>	<i>Percent</i>	<i>1,000 Head</i>	<i>1,000 Head</i>	<i>Percent</i>
<b>All Cattle and Calves</b>	<b>13,100</b>	<b>12,700</b>	<b>97</b>	<b>93,790</b>	<b>91,902</b>	<b>98</b>
Cows and Heifers That Have Calved	5,250	5,100	97	40,286	39,500	98
Beef Cows	4,635	4,475	97	30,844	30,125	98
Milk Cows	615	625	102	9,442	9,375	99
Heifers 500 Pounds and Over	2,740	2,590	95	20,200	19,776	98
Beef Cow Replacements	830	720	87	5,803	5,612	97
Milk Cow Replacements	310	240	77	4,609	4,451	97
Other Heifers	1,600	1,630	102	9,789	9,714	99
Steers 500 Pounds and Over	2,620	2,630	100	16,788	16,580	99
Bulls 500 Pounds and Over	360	330	92	2,211	2,110	95
Calves Under 500 Pounds	2,130	2,050	99	14,305	13,936	97
<b>Cattle on Feed</b>	<b>2,890</b>	<b>2,930</b>	<b>101</b>	<b>14,667</b>	<b>14,693</b>	<b>100</b>
<b>Calf Crop <sup>2</sup></b>	<b>4,800</b>	<b>4,600</b>	<b>96</b>	<b>35,496</b>	<b>35,085</b>	<b>99</b>
Born January 1 - June 30	(NA)	(NA)	(NA)	25,850	25,630	99
Born July 1 - December 31	(NA)	(NA)	(NA)	9,646	9,455	98

(NA) Not available.

<sup>1</sup>Totals may not add due to rounding.

<sup>2</sup>Calf crop refers to calves born during the previous year

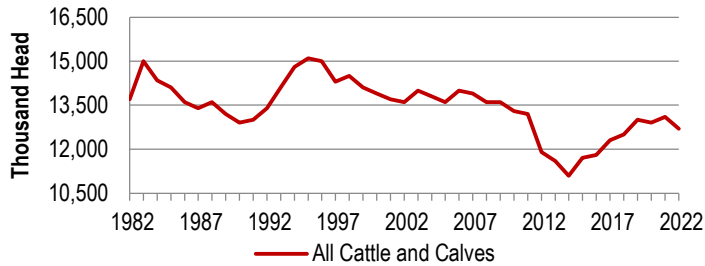
**All Cattle and Calves: Inventory, United States, 1982-2022**



# TEXAS AND U.S. INVENTORY (CONTINUED)

Data Source: USDA-NASS *January Cattle Report*

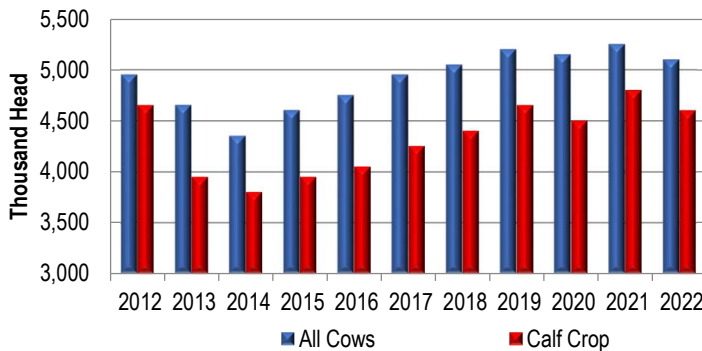
**All Cattle and Calves: Texas, January 1, 1982-2022**



Texas January 1, 2022 inventory of all cattle and calves, at 12.7 million head, was down 3 percent from the previous year.

Texas continues to rank highest in inventory of all cattle and calves. The top five states as of January 1, 2022 inventory levels are as follows: Texas, Nebraska, Kansas, Oklahoma, and California.

**All Cows and Calf Crop: Texas, January 1, 2012-2022**



**January 1, 2021 and 2022 Inventory for Top Five States**

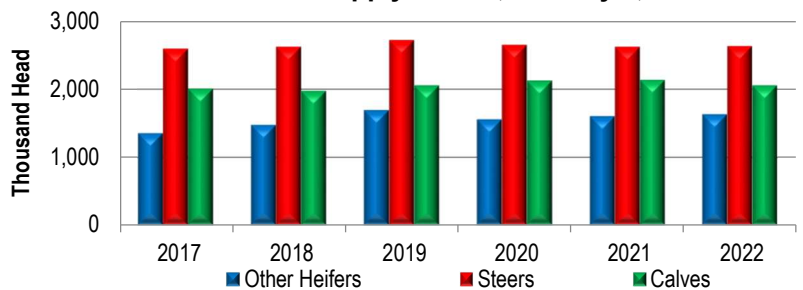
Rank	State	2021	2022	Percent of previous year
1	Texas	13,100	12,700	97
2	Nebraska	6,850	6,800	99
3	Kansas	6,550	6,500	99
4	Oklahoma	5,300	5,200	98
4	California	5,150	5,200	101

# TEXAS FEEDER SUPPLY AND PASTURE CONDITION

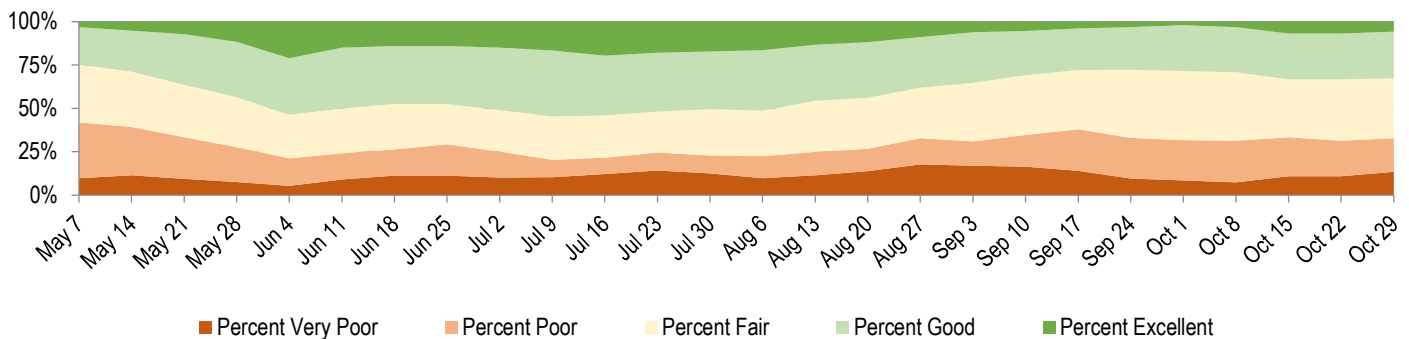
Data Source: USDA-NASS *January Cattle and Weekly Crop Progress Reports*

Total Texas feeder cattle supply, consisting of other heifers, steers, and calves, is down 1 percent from one year ago. Other heifers over 500 pounds, at 1,630 thousand head, were up 2 percent from last year. Steers over 500 pounds, at 2.63 million head, were up slightly from January 1, 2021. Calves less than 500 pounds, at 2.05 million head, were down 4 percent from a year ago.

**Feeder Cattle Supply: Texas, January 1, 2017-2022**



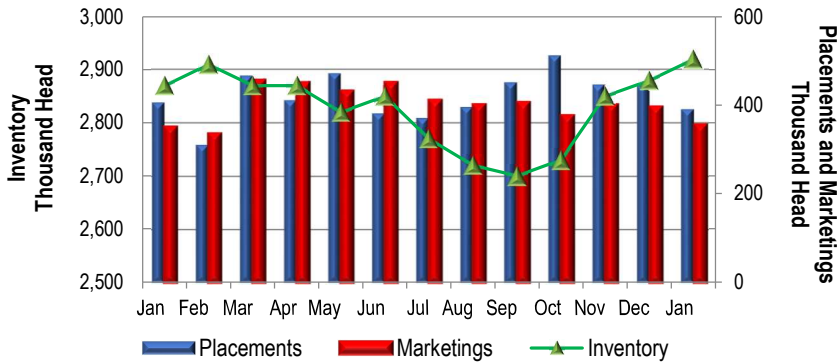
**2021 Weekly Pasture Condition: Texas**



# TEXAS CATTLE ON FEED

Data Source: USDA-NASS monthly *Cattle on Feed Report*

**Cattle on Feed: Inventory, Placements, Marketings, 1000+ Head Capacity Feedlots, Texas, 2021-2022**



January 1, 2022 cattle on feed inventory for Texas totaled 2.92 million head in feedlots with capacity of 1,000 or more head, up 1 percent from the previous month and up 2 percent from January 1, 2021.

Placements during 2021 increased 2 percent to 5.06 million head compared to 4.95 million head during 2020. Marketings of fed cattle for slaughter decreased slightly from 4.87 million in 2020 to 4.86 million in 2021.

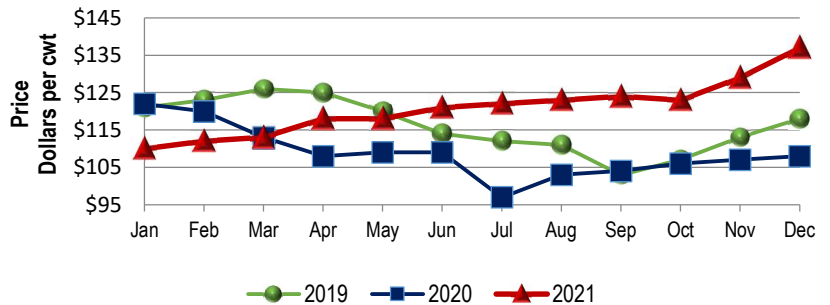
# U.S. MONTHLY CATTLE PRICES

Data Source: USDA-NASS *monthly Agricultural Prices Report*

Nationally, prices started January 2021 at \$110 per hundredweight, \$12 lower than January 2020, closing out the year at \$137 per hundredweight.

Prices increased through May 2021, then dropped Jun - Sep and began to rebound toward the end of the year.

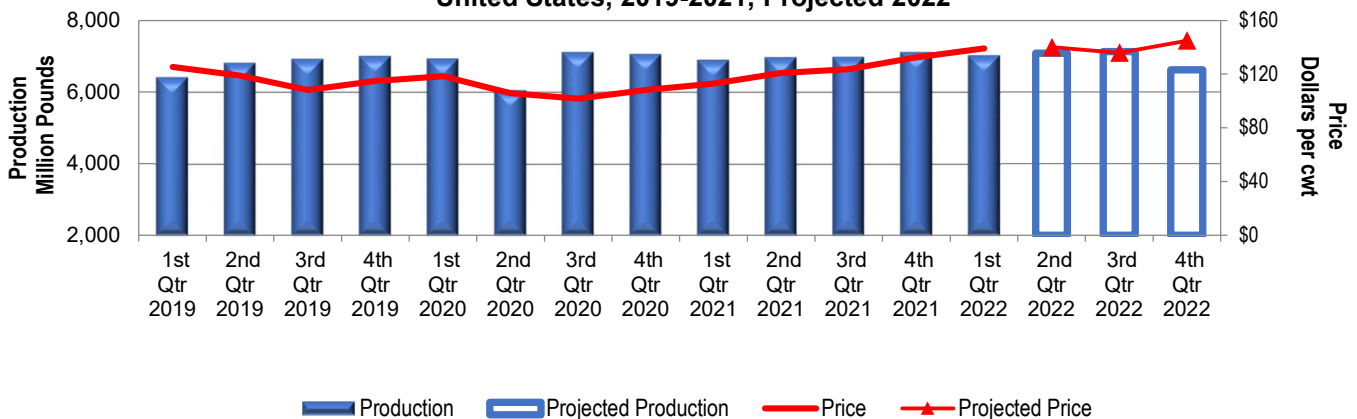
**Cattle 500+ Pounds: Monthly Prices Received, United States, 2019-2021**



# U.S. PRODUCTION AND PRICE OUTLOOK

Data Source: USDA-WAOB *World Agriculture Supply and Demand Estimates Report*

**Beef Production and Price by Quarter: United States, 2019-2021, Projected 2022**



Welcome to the 2022 edition of the Annual Cattle Review. Thanks to all participants in the cattle industry for their continued support and cooperation – especially the producers who provide data for the bi-annual Cattle and monthly Cattle on Feed surveys. Without their commitment and participation, this report would not be possible. A random sample of United States cattle producers was surveyed in early January. Survey procedures ensured that all cattle producers, regardless of size, had a chance to be included in the survey.

Though many of the statistics in this publication can be accessed through our website on a regular basis ([www.nass.usda.gov/Publications](http://www.nass.usda.gov/Publications)), this review will be issued annually following the release of the USDA-NASS *Meat Animals Production, Disposition, and Income* Annual Summary each April.

Please feel free to contact our office with any comments or questions you may have. I hope you find this information useful!

Wilbert Hundl, Jr.,  
Regional Director  
USDA-NASS  
Southern Plains Region  
*Serving Oklahoma and Texas*

#### OUR CONFIDENTIALITY PLEDGE

● **Names, addresses, and personal identifiers are fully protected by NASS with the force of law.** Title 7, U.S. Code, Section 2276 and the Confidential Information Protection and Statistical Efficiency Act **prohibit public disclosure** of individual information. ● **Only authorized** persons working for NASS as employees or sworn agents, who are subject to fines and imprisonment for unauthorized disclosure, can access individual record data and only for approved official purposes. ● **Data security** is a top priority during preparation of NASS reports. ● Published statistics from NASS surveys and censuses **will not** disclose reported data from an individual ● **Data are protected** from cybersecurity threats. Cybersecurity Enhancement Act of 2015, your data are further protected by the Department of Homeland Security (DHS) through cybersecurity monitoring of the systems that transmit your data.