



## Texas Crop Progress and Condition

Southern Plains Regional Field Office  
Post Office Box 70 Austin, Texas 78767  
(800) 626-3142 · FAX (855) 270-2725 · [www.nass.usda.gov/tx](http://www.nass.usda.gov/tx)

Issue: TX-CW 2933

Weekly Summary for September 30 - October 6

Released: October 7, 2024

The southern part of the state received some rainfall, while other parts of the state experienced dry conditions, with little to no rainfall. Rainfall ranged from trace amounts up to 6 inches, with the Lower Valley and South Texas receiving the most rain. Drought conditions ranged from none to exceptional drought with areas in the Trans-Pecos being the driest. There was an average of 5.9 days suitable for fieldwork.

**Small Grains:** Producers were planting small grains in most parts of the state, despite dry conditions. In the Southern High Plains, the Northern Low Plains, and the Southern Low Plains, winter wheat planting was delayed due to lack of moisture. In parts of the Northern Low Plains, winter wheat was emerging. Winter wheat planted reached 51 percent, up 8 points from the previous week, and up 1 point from normal. Winter wheat emerged reached 26 percent, up 11 points from the previous week, and up 2 points from normal. In the Cross Timbers, the Edwards Plateau, and South East Texas, producers were planting oats. Oats planted reached 39 percent, up 11 points from the previous week and up 1 point from normal. Oats emerged reached 11 percent, up 1 point from normal.

**Row Crops:** In the Northern High Plains, producers were harvesting corn and sorghum. Corn harvested reached 95 percent, up 4 points from the previous week, and up 14 points from normal. Sorghum harvested reached 93 percent, up 3 points from the previous week, and up 5 points from normal. In the Northern High Plains and the Edwards Plateau, bolls were opening. In South Texas and the Lower Valley, producers were harvesting cotton. Cotton bolls opening reached 77 percent, up 12 points from the previous week, and up 2 points from normal. Cotton harvested reached 33 percent, up 2 points from the previous week, and up 4 points from normal. In the Southern High Plains, producers were digging peanuts, and in the Cross Timbers peanuts were being harvested. Peanuts mature reached 51 percent, up 2 points from the previous week, and up 8 points from normal. Peanuts harvested reached 13 percent, up 7 points from the previous week, and up 3 points from normal. Soybeans dropping leaves reached 90 percent, up 4 points from the previous week, but unchanged from normal. Soybeans harvested reached 56 percent, up 11 points from the previous week, but down 5 points from normal. Sunflowers harvested reached 90 percent, up 3 points from the previous week, and up 15 points from normal.

**Fruit, Vegetable, and Specialty Crops:** In the Lower Valley, fall vegetables were progressing. In the Upper Coast, producers were harvesting fall vegetables. In the Cross Timbers, producers were harvesting pecans. In the Lower Valley, citrus trees were maturing and being harvested.

**Range and Pasture:** Dry conditions and minimal rainfalls were beginning to affect some pastures. Grasshoppers and army worms remained prevalent in some pastures. In the Upper Coast, South Texas, and North East Texas, producers were cutting hay. Producers continued to supplemental feeding. Pasture and range conditions were rated at 61 percent, poor to fair.

**Crop Progress by Percent  
For Week Ending October 6, 2024**

Stage	Percentage of Acreage			
	Current Week	Previous Week	Previous Year	5 Year Average
<b>Corn</b>				
Harvested	95	91	82	81
<b>Upland Cotton</b>				
Bolls Opening	77	65	74	75
Harvested	33	31	31	29
<b>Peanuts</b>				
Mature	51	49	49	43
Harvested	13	6	10	10
<b>Sorghum</b>				
Harvested	93	90	87	88
<b>Soybeans</b>				
Dropping Leaves	90	86	89	90
Harvested	56	45	51	61
<b>Sunflowers</b>				
Harvested	90	87	79	75
<b>Winter Wheat</b>				
Planted	51	43	52	50
Emerged	26	15	24	24
<b>Oats</b>				
Planted	39	28	23	38
Emerged	11	(NA)	-	10

(NA) Not Available

- Represents zero

**Crop Condition by Percent  
For Week Ending October 6, 2024**

Crop	Percent of Acreage					Index <sup>1</sup>	
	Excellent	Good	Fair	Poor	Very Poor	2024	2023
Corn	8	33	28	22	9	61	67
Upland Cotton	1	16	35	28	20	45	37
Peanuts	3	48	45	3	1	74	66
Sorghum	12	35	31	16	6	68	62
Soybeans	1	33	38	24	4	60	61
Range and Pasture	1	13	29	32	25	39	32

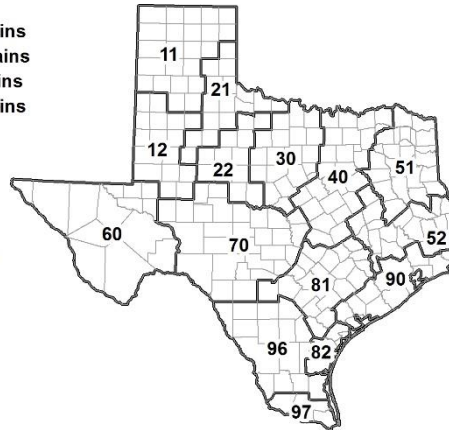
<sup>1</sup> The formula for the condition index is  $I = (110E + 90G + 60F + 25P + 5V)/100$  where I = crop condition index and E, G, F, P, V = percentage of crop rated very poor, poor, fair, good, excellent.

**Soil Moisture and Days Suitable by District  
For Week Ending October 6, 2024**

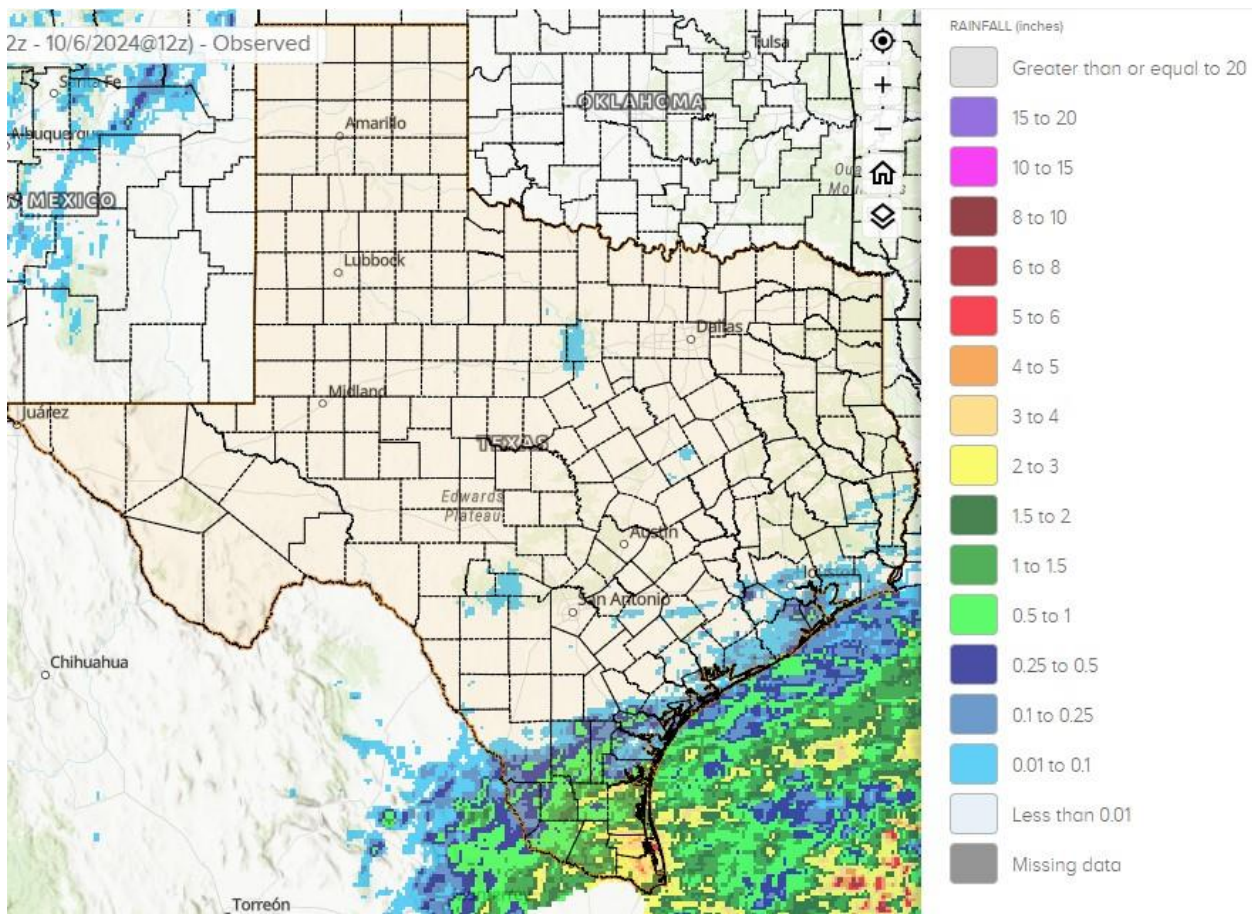
District	Subsoil Moisture Condition by District				Topsoil Moisture Condition by District				Days Suitable for Fieldwork
	Percentage of Acreage				Percentage of Acreage				
	Very Short	Short	Adequate	Surplus	Very Short	Short	Adequate	Surplus	
11	32	52	16	0	25	44	24	7	6.9
12	22	74	4	0	0	36	60	4	3.7
21	20	72	8	0	67	21	12	0	5.3
22	4	49	47	0	18	42	40	0	6.6
30	18	31	48	3	22	27	51	0	5.8
40	39	43	18	0	42	44	14	0	6.6
51	12	52	33	3	11	50	37	2	6.9
52	8	53	34	5	30	44	25	1	7.0
60	0	50	50	0	0	22	73	5	3.1
70	17	42	40	1	17	32	50	1	5.9
81	48	33	19	0	48	36	16	0	7.0
82	4	45	51	0	11	32	51	6	4.6
90	16	24	60	0	18	54	23	5	6.0
96	10	50	39	1	14	44	41	1	6.8
97	1	4	83	12	7	28	49	16	5.1
State	23	50	26	1	23	39	35	3	5.9

**Texas Agricultural Districts**

- 11 Northern High Plains
- 12 Southern High Plains
- 21 Northern Low Plains
- 22 Southern Low Plains
- 30 Cross Timbers
- 40 Blacklands
- 51 North East
- 52 South East
- 60 Trans-Pecos
- 70 Edwards Plateau
- 81 South Central
- 82 Coastal Bend
- 90 Upper Coast
- 96 South
- 97 Lower Valley

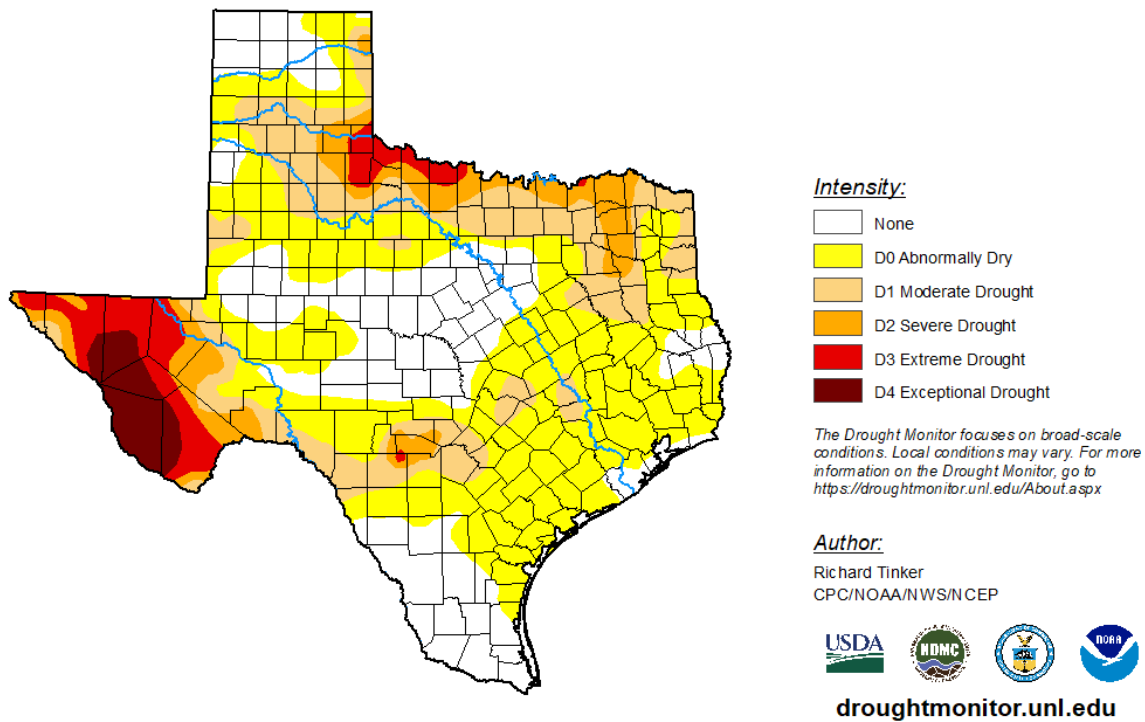


## Seven Day Observed Regional Precipitation, October 6, 2024



Source: National Weather Service, [www.nws.noaa.gov](http://www.nws.noaa.gov)

## Drought Monitor, Map Released: October 3, 2024



Source: National Drought Mitigation Center, a partnership with USDA, U.S. Department of Commerce/NOAA, <http://droughtmonitor.unl.edu>