



Texas Crop Progress and Condition

Southern Plains Regional Field Office
Post Office Box 70 Austin, Texas 78767
(800) 626-3142 · FAX (855) 270-2725 · www.nass.usda.gov/tx

Issue: TX-CW3124

Weekly Summary for August 12 - August 18

Released: August 19, 2024

Most of the state experienced hot and dry conditions with limited rainfall. Rainfall ranged from trace amounts up to 2 inches, with the Northern High Plains and the Southern High Plains receiving the most rain. Drought conditions ranged from none to exceptional drought with areas in the Edwards Plateau being the driest. There was an average of 6.6 days suitable for fieldwork.

Row Crops: In the Northern High Plains, some producers were irrigating corn fields. In other parts of the state, producers continued harvesting corn and sorghum. Corn dough reached 88 percent, up 3 points from the previous week, and up 1 point from normal. Corn dented reached 82 percent, up 13 points from the previous week, and up 5 points from normal. Corn mature reached 68 percent, up 16 points from the previous week, and up 11 points from normal. Corn harvested reached 60 percent, up 22 points from the previous week, and up 27 points from normal. Sorghum coloring reached 77 percent, up 4 points from the previous week, but unchanged from normal. Sorghum mature reached 70 percent, up 10 points from the previous week, and up 4 points from normal. Sorghum harvested reached 55 percent, up 8 points from the previous week, and up 3 points from normal. In the Northern High Plains and the Southern High Plains, cotton was setting bolls. In the Blacklands, cotton bolls were opening, while some producers observed bollworm pressure in the Trans-Pecos district. Cotton setting bolls reached 81 percent, up 12 points from the previous week, and up 5 points from normal. Cotton opening bolls reached 23 percent, up 6 points from the previous week, and up 1 point from normal. In South Central Texas and in the Upper Coast, rice harvest was ongoing. Rice harvested reached 60 percent, up 9 points from normal. Peanuts pegging reached 90 percent, up 12 points from the previous week, and up 6 points from normal. Soybeans blooming reached 95 percent, up 4 points from the previous week, and up 1 point from normal. Soybeans setting pods reached 78 percent, up 3 points from the previous week, but unchanged from normal. Soybeans dropping leaves reached 38 percent, up 16 points from the previous week, and up 4 points from normal. Sunflowers harvested reached 54 percent, up 9 points from the previous week, and up 10 points from normal.

Fruit, Vegetable, and Specialty Crops: In the Lower Valley, producers were planting cool season vegetables and irrigating citrus trees. In the Blacklands, producers were growing hydroponic greens in cool greenhouses and harvesting okra and peppers. In the Southern High Plains, producers were wrapping up melon harvest.

Range and Pasture: In many parts of the state, producers were cutting and baling hay. In the Cross Timbers and North East Texas insect pests continued to persist. In the Northern Low Plains and the Southern Low Plains, producers were supplementing cattle with hay and cubes. Pasture and range conditions were rated at 57 percent, fair to poor.

**Crop Progress by Percent
For Week Ending August 18, 2024**

Stage	Percentage of Acreage			
	Current Week	Previous Week	Previous Year	5 Year Average
Corn				
Dough	88	85	85	87
Dented	82	69	77	77
Mature	68	52	61	57
Harvested	60	38	40	33
Upland Cotton				
Setting Bolls	81	69	71	76
Bolls Opening	23	17	21	22
Peanuts				
Pegging	90	78	82	84
Rice				
Harvested	60	39	54	51
Sorghum				
Headed	93	89	94	93
Coloring	77	73	79	77
Mature	70	60	64	66
Harvested	55	47	52	52
Soybeans				
Blooming	95	91	96	94
Setting Pods	78	75	75	78
Dropping Leaves	38	22	32	34
Sunflowers				
Harvested	54	45	48	44

**Crop Condition by Percent
For Week Ending August 18, 2024**

Crop	Percent of Acreage					Index ¹	
	Excellent	Good	Fair	Poor	Very Poor	2024	2023
Corn	8	33	28	22	9	61	71
Upland Cotton	6	23	34	25	12	55	32
Peanuts	8	51	38	2	1	78	66
Rice	5	49	30	14	2	71	80
Sorghum	12	35	31	16	6	68	62
Soybeans	4	18	54	18	6	58	67
Range and Pasture	5	18	31	26	20	48	27

¹ The formula for the condition index is $I = (110E + 90G + 60F + 25P + 5V)/100$ where I = crop condition index and E, G, F, P, V = percentage of crop rated very poor, poor, fair, good, excellent.

**Soil Moisture and Days Suitable by District
For Week Ending August 18, 2024**

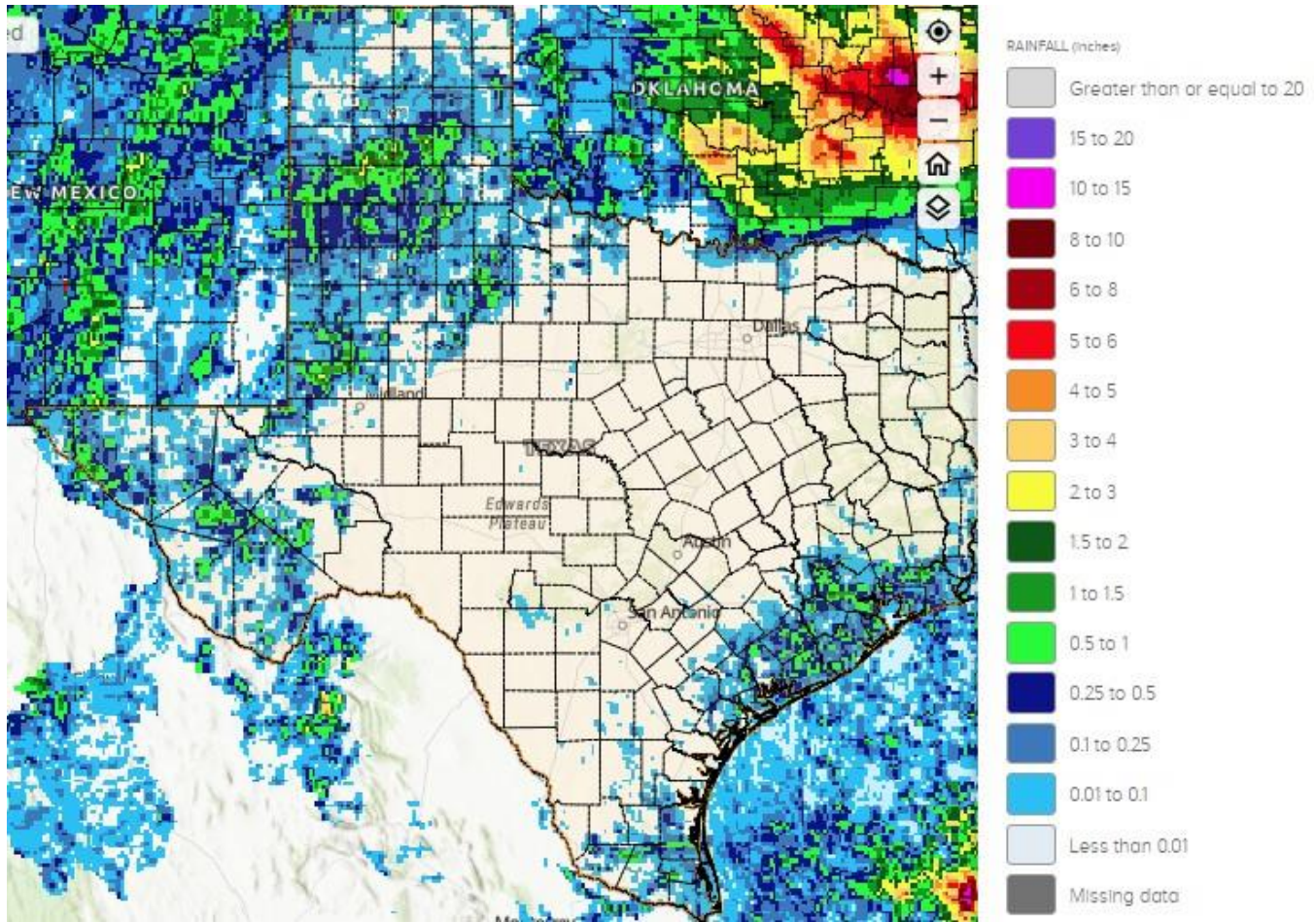
District	Subsoil Moisture Condition by District				Topsoil Moisture Condition by District				Days Suitable for Fieldwork
	Percentage of Acreage				Percentage of Acreage				
	Very Short	Short	Adequate	Surplus	Very Short	Short	Adequate	Surplus	
11	16	48	36	0	36	46	18	0	5.8
12	38	31	26	5	45	34	15	6	6.6
21	52	39	9	0	59	37	4	0	6.7
22	44	51	5	0	50	48	2	0	6.8
30	36	39	25	0	40	41	19	0	6.9
40	34	32	32	2	42	35	23	0	6.9
51	8	48	44	0	13	46	41	0	7.0
52	5	32	53	10	3	32	62	3	7.0
60	29	30	39	2	29	30	39	2	6.7
70	46	39	13	2	40	34	24	2	6.8
81	2	47	51	0	4	61	32	3	6.7
82	6	19	75	0	16	19	65	0	7.0
90	0	16	52	32	2	22	72	4	6.6
96	23	47	29	1	39	34	26	1	6.8
97	8	19	73	0	35	45	20	0	7.0
State	27	38	32	3	36	39	23	2	6.6

Texas Agricultural Districts

- 11 Northern High Plains
- 12 Southern High Plains
- 21 Northern Low Plains
- 22 Southern Low Plains
- 30 Cross Timbers
- 40 Blacklands
- 51 North East
- 52 South East
- 60 Trans-Pecos
- 70 Edwards Plateau
- 81 South Central
- 82 Coastal Bend
- 90 Upper Coast
- 96 South
- 97 Lower Valley

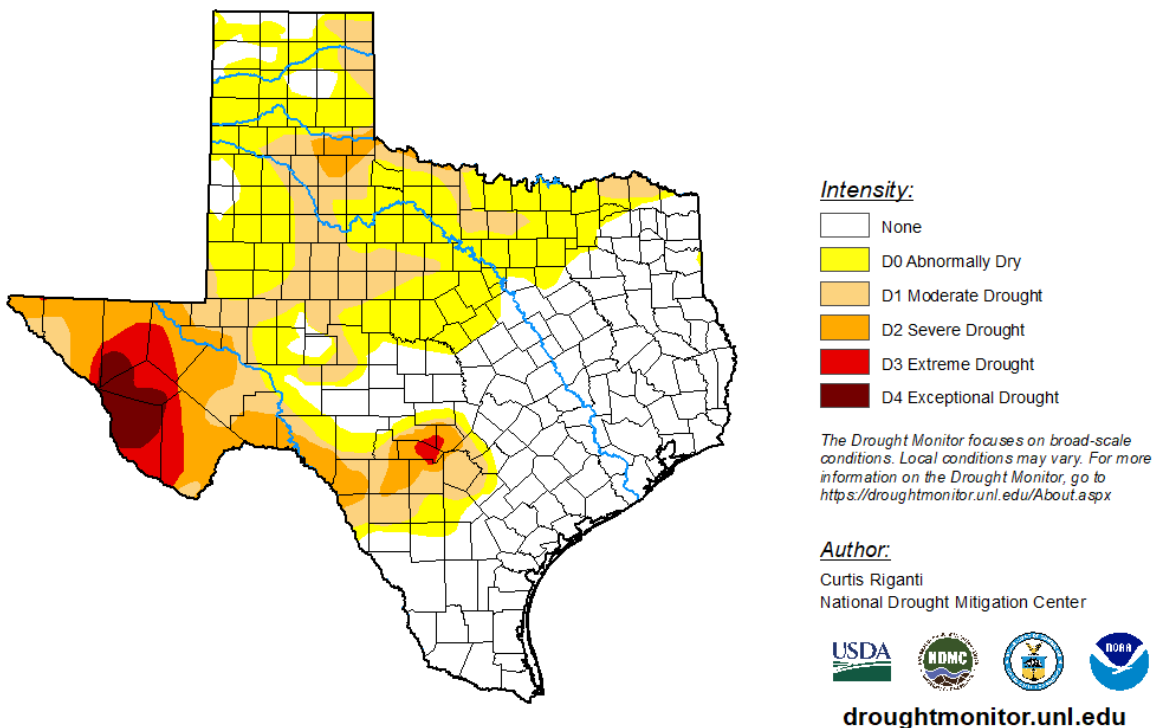


Seven Day Observed Regional Precipitation, August 18, 2024



Source: National Weather Service, www.nws.noaa.gov

Drought Monitor, Map Released: August 15, 2024



Source: National Drought Mitigation Center, a partnership with USDA, U.S. Department of Commerce/NOAA, <http://droughtmonitor.unl.edu>