



Texas Crop Progress and Condition

Southern Plains Regional Field Office
Post Office Box 70 Austin, Texas 78767
(800) 626-3142 · FAX (855) 270-2725 · www.nass.usda.gov/tx

Issue: TX-CW 2424

Weekly Summary for June 24 - June 30

Released: July 1, 2024

Hot and dry conditions caused cropland to dry out quickly in parts of the state. Rainfall ranged from trace amounts up to 4 inches, with the Northern High Plains and South East Texas receiving the most rain. Drought conditions ranged from none to extreme drought with areas in the Trans-Pecos and Edwards Plateau being the driest. There was an average of 6.1 days suitable for fieldwork.

Small Grains: Small grain harvest continued but was winding down in some areas. In the Southern High Plains, there was damage to winter wheat due to feral hogs. Winter wheat harvested reached 87 percent, up 13 points from the previous week, and up 2 points from normal. Oats harvested reached 91 percent, up 5 points from the previous week, and up 1 point from normal.

Row Crops: Row crops continued to progress across the state. In the Cross Timbers, the Blacklands, and the Edwards-Plateau, corn was being cut for silage. Corn dough reached 47 percent, up 4 points from the previous week, and up 1 point from normal. In the Lower Valley, and in South Texas, sorghum was being harvested. Sorghum coloring reached 46 percent, up 6 points from the previous week, and up 7 points from normal. Sorghum mature reached 39 percent, up 9 points from the previous week. Sorghum harvested reached 27 percent, up 7 points from the previous week. In the Upper Coast, the Lower Valley, and South Texas, cotton bolls continued to open. Cotton squaring reached 37 percent, up 9 points from the previous week, and up 6 points from normal. Cotton setting bolls reached 13 percent, up 2 points from the previous week, and up 2 points from normal. Rice headed reached 65 percent, up 11 points from the previous week, and up 23 points from normal. In South Texas, early planted peanuts were pegging at 12 percent, up 5 points from the previous week, and up 7 points from normal. Soybeans blooming reached 42 percent, up 8 points from the previous week, but down 2 points from normal. In the Lower Valley, sunflowers were being harvested. Sunflowers harvested reached 6 percent, up 2 points from the previous week, but unchanged from normal.

Fruit, Vegetable, and Specialty Crops: In the Northern High Plains, producers were planting black-eyed peas and cucumbers. In the Trans-Pecos, producers continued to harvest onions. In the Southern High Plains and South Texas, producers were harvesting watermelon and cantaloupes. In South East Texas, watermelon harvest was delayed due to wet conditions.

Livestock, Range and Pasture: Producers noticed heavy pasture growth in some parts of the state. As a result, hay was being baled. While in other parts of the state, producers noticed distress in pastures due to a lack of moisture. Pasture and range conditions were rated at 59%, fair to good.

**Crop Progress by Percent
For Week Ending June 30, 2024**

Stage	Percentage of Acreage			
	Current Week	Previous Week	Previous Year	5 Year Average
Corn				
Silked	70	67	71	69
Dough	47	43	40	42
Upland Cotton				
Planted	96	92	95	99
Squaring	37	28	32	31
Setting Bolls	13	11	11	11
Peanuts				
Pegging	12	7	8	5
Rice				
Headed	65	54	40	42
Sorghum				
Headed	65	60	60	63
Coloring	46	40	31	39
Mature	39	30	-	4
Harvested	27	20	-	-
Soybeans				
Planted	95	91	95	97
Emerged	85	83	88	90
Blooming	42	34	37	44
Sunflowers				
Planted	84	82	87	84
Harvested	6	4	8	6
Winter Wheat				
Harvested	87	74	83	85
Oats				
Harvested	91	86	87	90

-Represents zero.

**Crop Condition by Percent
For Week Ending June 30, 2024**

Crop	Percent of Acreage					Index ¹	
	Excellent	Good	Fair	Poor	Very Poor	2024	2023
Corn	13	39	32	14	2	72	80
Upland Cotton	5	39	34	10	12	64	58
Peanuts	8	48	40	3	1	77	75
Rice	10	72	15	2	1	85	84
Sorghum	12	50	26	6	6	76	74
Soybeans	11	30	50	7	2	71	71
Winter Wheat	5	23	55	11	6	62	60
Oats	3	27	35	13	22	53	56
Range and Pasture	8	29	30	20	13	59	48

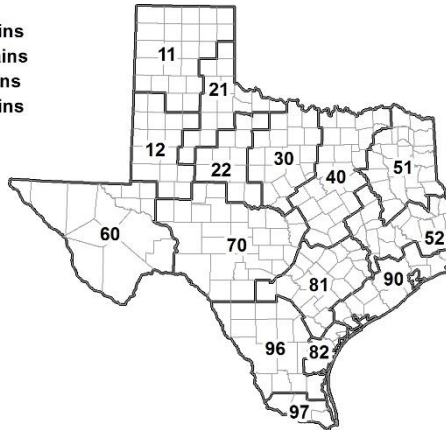
¹ The formula for the condition index is $I = (110E + 90G + 60F + 25P + 5V)/100$ where I = crop condition index and E, G, F, P, V = percentage of crop rated very poor, poor, fair, good, excellent.

**Soil Moisture and Days Suitable by District
For Week Ending June 30, 2024**

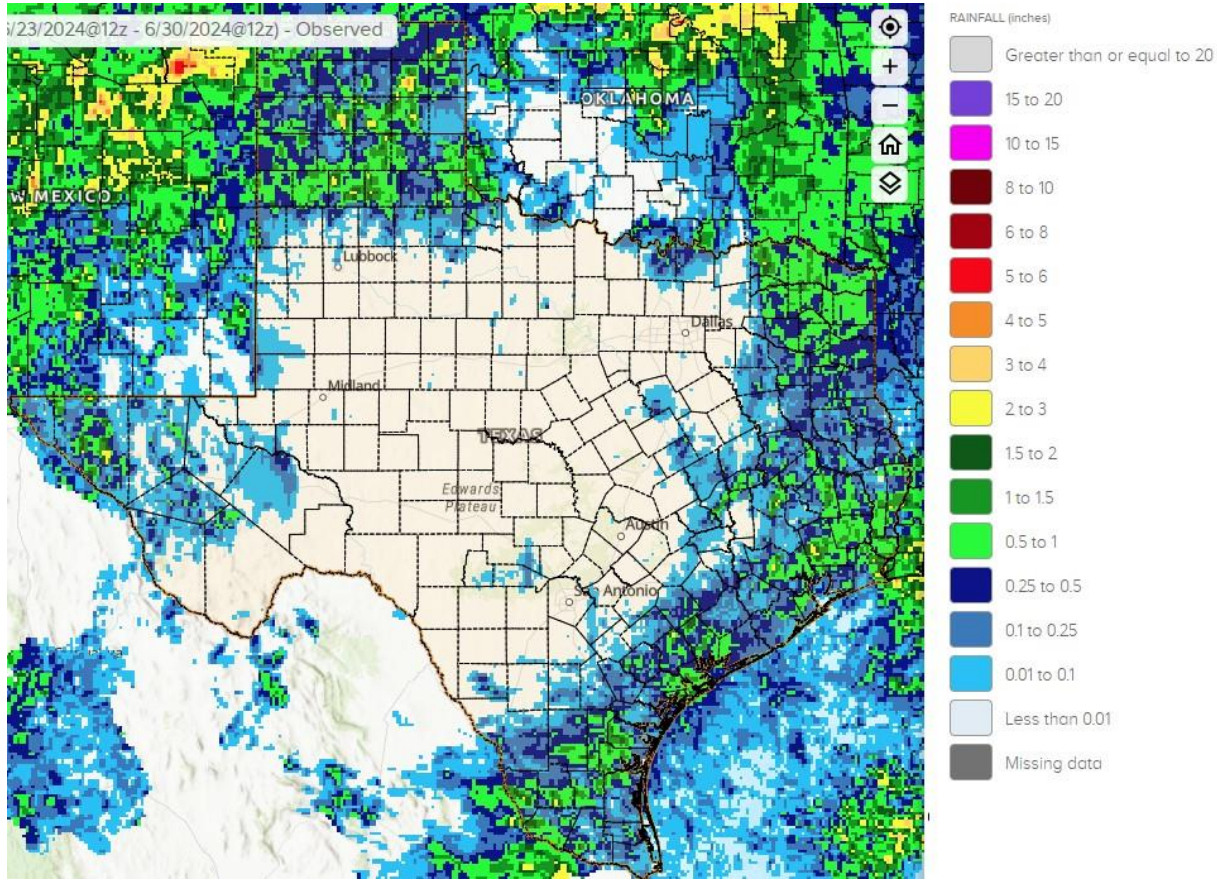
District	Subsoil Moisture Condition by District				Topsoil Moisture Condition by District				Days Suitable for Fieldwork
	Percentage of Acreage				Percentage of Acreage				
	Very Short	Short	Adequate	Surplus	Very Short	Short	Adequate	Surplus	
11	15	30	55	0	18	40	41	1	6.2
12	56	22	20	2	17	54	25	4	5.5
21	1	44	55	0	1	45	54	0	7.0
22	10	57	33	0	10	76	14	0	6.7
30	1	36	59	4	4	34	62	0	5.9
40	1	24	67	8	11	31	49	9	6.9
51	1	26	63	10	1	29	58	12	6.7
52	1	19	53	27	1	11	78	10	6.8
60	35	48	14	3	30	30	38	2	4.2
70	30	34	34	2	44	41	15	0	6.0
81	6	25	65	4	6	29	59	6	6.4
82	6	0	61	33	0	8	62	30	3.3
90	0	25	67	8	3	20	65	12	6.1
96	6	35	55	4	5	28	64	3	6.1
97	26	35	35	4	8	14	74	4	4.3
State	17	30	49	4	12	40	43	5	6.1

Texas Agricultural Districts

- 11 Northern High Plains
- 12 Southern High Plains
- 21 Northern Low Plains
- 22 Southern Low Plains
- 30 Cross Timbers
- 40 Blacklands
- 51 North East
- 52 South East
- 60 Trans-Pecos
- 70 Edwards Plateau
- 81 South Central
- 82 Coastal Bend
- 90 Upper Coast
- 96 South
- 97 Lower Valley

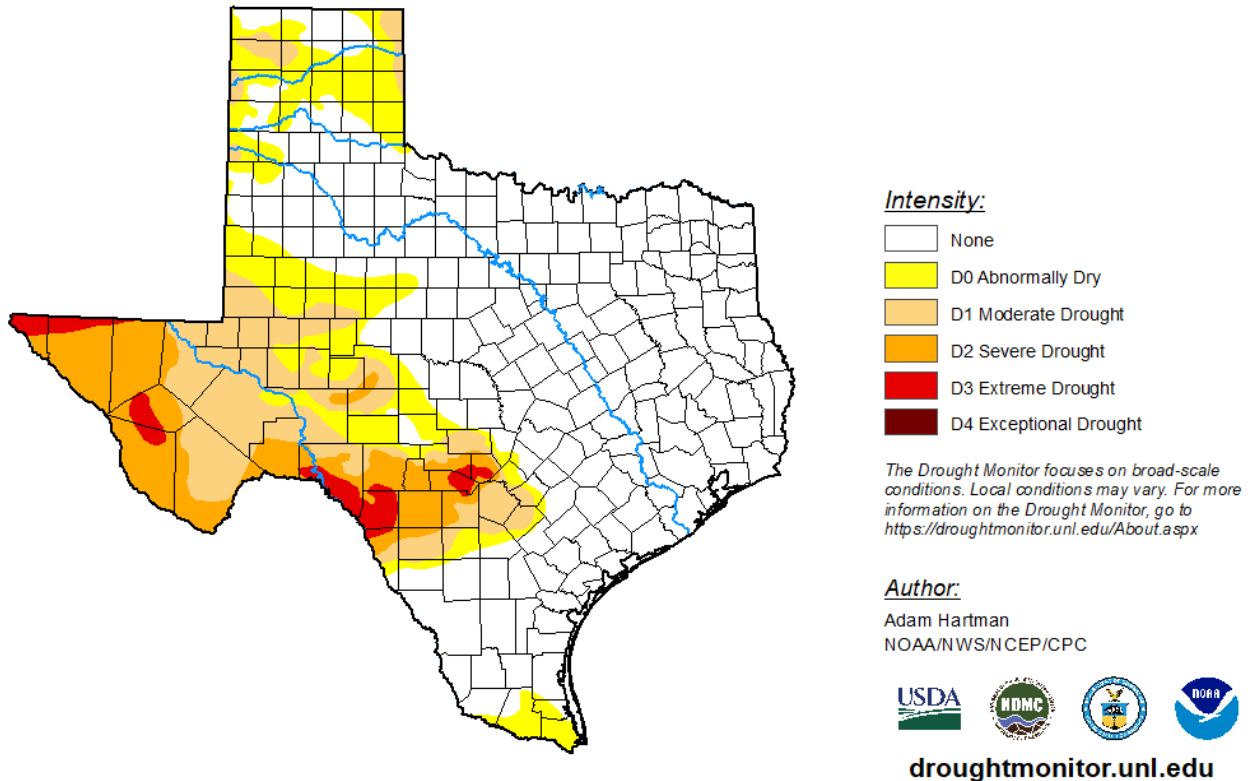


Seven Day Observed Regional Precipitation, June 30, 2024



Source: National Weather Service, www.nws.noaa.gov

Drought Monitor, Map Released: June 27, 2024



Source: National Drought Mitigation Center, a partnership with USDA, U.S. Department of Commerce/NOAA, <http://droughtmonitor.unl.edu>