



Texas Crop Progress and Condition

Southern Plains Regional Field Office
Post Office Box 70 Austin, Texas 78767
(800) 626-3142 · FAX (855) 270-2725 · www.nass.usda.gov/tx

Issue: TX-CW0625 Weekly Summary for February 17 - February 23 Released: February 24, 2025

Most of the state experienced below freezing temperatures. Rainfall ranged from trace amounts up to 5 inches, with the South East Texas district receiving the most rain. Drought conditions ranged from none to exceptional drought with areas in the Trans-Pecos being the driest. There was an average of 4.2 days suitable for fieldwork.

Small Grains: In the Blacklands and the Cross Timbers, winter wheat was progressing. In South Central Texas, winter wheat was heading out. In the High Plains and the Low Plains, producers were noticing wheat damage due to low temperatures. Winter wheat headed reached 6 percent, down 1 point from the previous year, and down 3 points from normal. In the Cross Timbers, producers noticed some damage to oats due to low temperatures, while oat conditions were improving in the Blacklands. Oat conditions were rated very poor to fair.

Row Crops: In the Southern Low Plains and the Trans-Pecos, producers were performing pre-planting activities.

Fruit, Vegetable, and Specialty Crops: In the Trans-Pecos, producers were using water allocations for pecans. In the Lower Valley, producers continued harvesting citrus and vegetables.

Range and Pasture: In the Cross Timbers, cattle were grazing winter wheat pastures. In the Southern Low Plains and the Lower Valley, native winter grass was dormant. In North East Texas and South East Texas, feral hogs were foraging in fields. Most producers in the state were feeding livestock hay and supplements. Pasture and range conditions were rated at 70 percent, poor to fair.

**Crop Progress by Percent
For Week Ending February 23, 2025**

Stage	Percentage of Acreage			
	Current Week	Previous Week	Previous Year	5 Year Average
Winter Wheat Headed	6	5	7	9

**Crop Condition by Percent
For Week Ending February 23, 2025**

Crop	Percent of Acreage					Index ¹	
	Excellent	Good	Fair	Poor	Very Poor	2025	2024
Winter Wheat	5	32	33	22	8	60	67
Oats	3	13	30	21	33	40	50
Range and Pasture	1	8	27	43	21	36	42

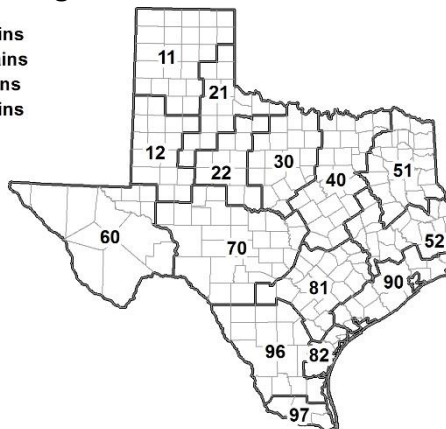
¹ The formula for the condition index is $I = (110E + 90G + 60F + 25P + 5V)/100$ where I = crop condition index and E, G, F, P, V = percentage of crop rated excellent, good, fair, poor, very poor.

**Soil Moisture and Days Suitable by District
For Week Ending February 23, 2025**

District	Subsoil Moisture Condition by District				Topsoil Moisture Condition by District				Days Suitable for Fieldwork
	Percentage of Acreage				Percentage of Acreage				
	Very Short	Short	Adequate	Surplus	Very Short	Short	Adequate	Surplus	
11	8	39	51	2	9	59	32	0	3.3
12	36	54	10	0	33	46	21	0	6.0
21	24	63	13	0	28	64	8	0	4.4
22	33	50	17	0	42	48	10	0	5.2
30	3	47	50	0	7	47	46	0	5.0
40	9	21	44	26	5	11	59	25	2.4
51	0	16	54	30	0	6	60	34	4.5
52	2	11	50	37	2	10	49	39	4.3
60	0	56	44	0	0	56	44	0	4.1
70	33	45	21	1	31	55	14	0	4.4
81	9	50	36	5	4	43	47	6	4.8
82	34	55	11	0	16	58	26	0	3.8
90	0	5	80	15	0	6	19	75	1.8
96	34	53	13	0	28	46	26	0	6.2
97	17	50	33	0	21	46	33	0	4.4
State	18	41	34	7	17	42	32	9	4.2

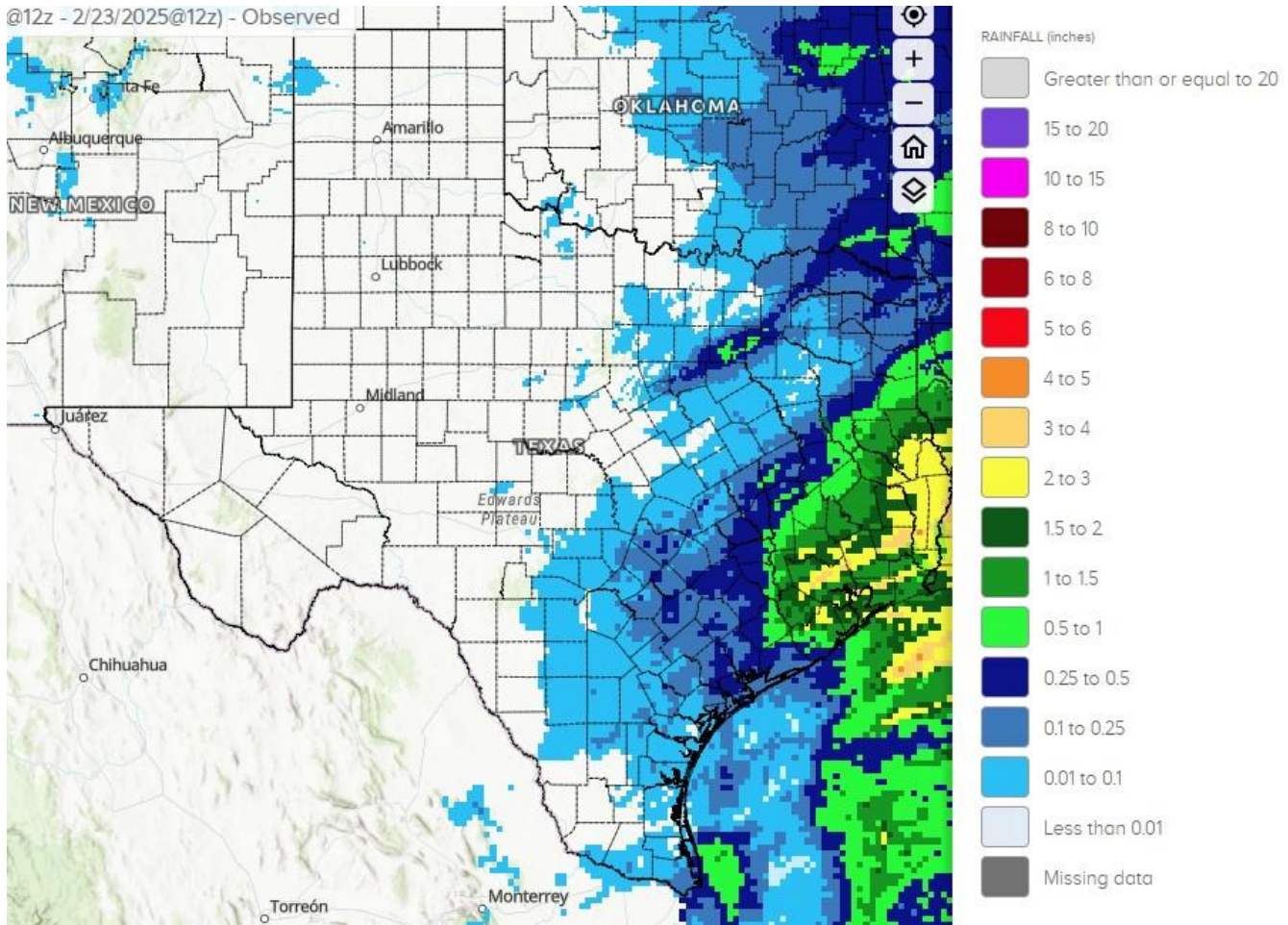
Texas Agricultural Districts

- 11 Northern High Plains
- 12 Southern High Plains
- 21 Northern Low Plains
- 22 Southern Low Plains
- 30 Cross Timbers
- 40 Blacklands
- 51 North East
- 52 South East
- 60 Trans-Pecos
- 70 Edwards Plateau
- 81 South Central
- 82 Coastal Bend
- 90 Upper Coast
- 96 South
- 97 Lower Valley



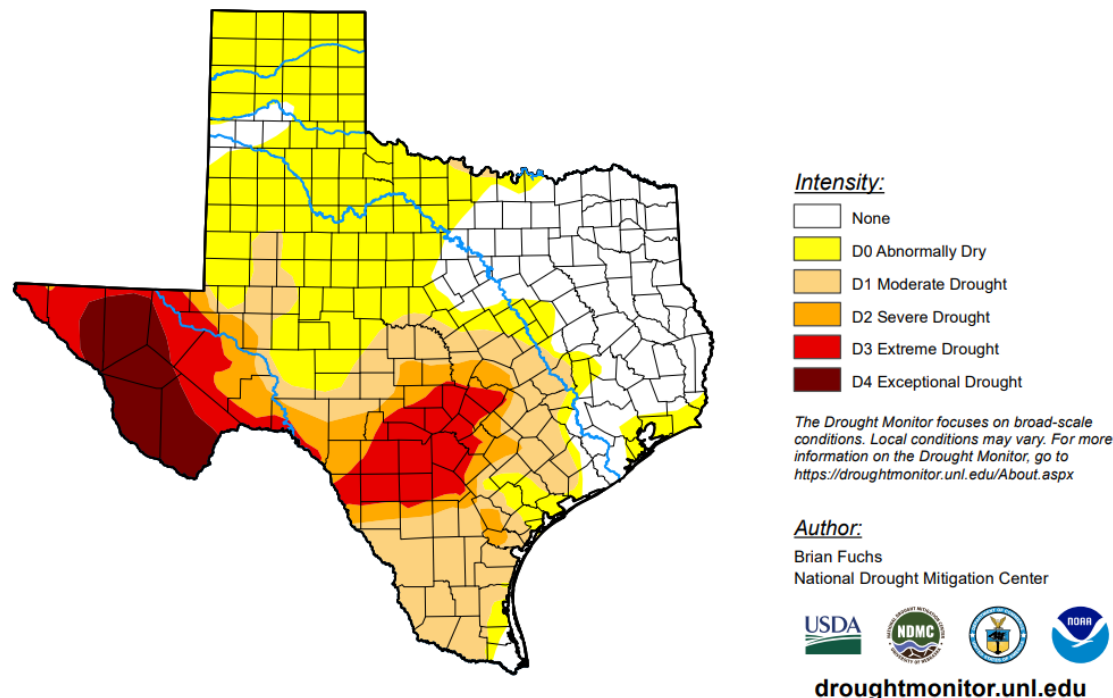
Seven Day Observed Regional Precipitation, February 23, 2025

@12z - 2/23/2025@12z) - Observed



Source: National Weather Service, www.nws.noaa.gov

Drought Monitor, Map Released: February 20, 2025



Source: National Drought Mitigation Center, a partnership with USDA, U.S. Department of Commerce/NOAA, <http://droughtmonitor.unl.edu>