



Texas Crop Progress and Condition

Southern Plains Regional Field Office
Post Office Box 70 Austin, Texas 78767
(800) 626-3142 · FAX (855) 270-2725 · www.nass.usda.gov/tx

Issue: TX-CW0125

Weekly Summary for January 13 - January 19

Released: January 21, 2025

Most of the state experienced seasonal weather conditions, with some snow in the northern part of the state. Rainfall ranged from trace amounts up to 1.5 inches, with the Coastal Bend and the Upper Coast receiving the most rain. Drought conditions ranged from none to exceptional drought with areas in the Trans-Pecos being the driest. There was an average of 5 days suitable for fieldwork.

Small Grains: In the Northern High Plains, winter wheat was progressing due to light snow and ice that melted as temperatures elevated. In the Southern High Plains and the Cross Timbers, winter wheat was progressing. In the Blacklands, producers were noticing a small level of hessian fly in winter wheat. In the Edwards Plateau, winter wheat and oats needed additional moisture to progress, with crop loss reported in some areas. Winter wheat emerged reached 88 percent, down 7 points from the previous year, and down 3 points from normal. Oats emerged reached 90 percent, down 5 points from the previous year, and down 4 points from normal.

Row Crops: In the Northern Low Plains and the Southern Low Plains, cotton harvesting was near completion. In the Trans-Pecos, producers were awaiting the ginning process. Cotton harvested reached 90 percent, down 5 points from the previous year and from normal.

Fruit, Vegetable, and Specialty Crops: In the Cross Timbers, Trans-Pecos, and the Edwards Plateau, pecan harvesting was winding down. In the Lower Valley, producers were harvesting cool season vegetables.

Range and Pasture: In the Northern Low Plains, the Southern Low Plains, and the Cross Timbers, stockers were grazing winter wheat. In North East Texas and the Blacklands winter grass was growing. In most parts of the state, producers continued feeding hay, with additional supplemental feeding due to colder temperatures. Pasture and range conditions were rated at 70 percent, poor to fair.

**Crop Progress by Percent
For Week Ending January 19, 2025**

Stage	Percentage of Acreage			
	Current Week	Previous Week	Previous Year	5 Year Average
Upland Cotton Harvested	90	(NA)	95	95
Winter Wheat Emerged	88	(NA)	95	91
Oats Emerged	90	(NA)	95	94

(NA) Not available.

**Crop Condition by Percent
For Week Ending January 19, 2025**

Crop	Percent of Acreage					Index ¹	
	Excellent	Good	Fair	Poor	Very Poor	2025	2024
Upland Cotton	2	16	27	33	22	(NA)	(NA)
Winter Wheat	9	34	33	18	6	65	63
Oats	2	14	33	22	29	42	49
Range and Pasture	1	10	26	44	19	38	41

¹ The formula for the condition index is $I = (110E + 90G + 60F + 25P + 5V)/100$ where I = crop condition index and E, G, F, P, V = percentage of crop rated excellent, good, fair, poor, very poor.

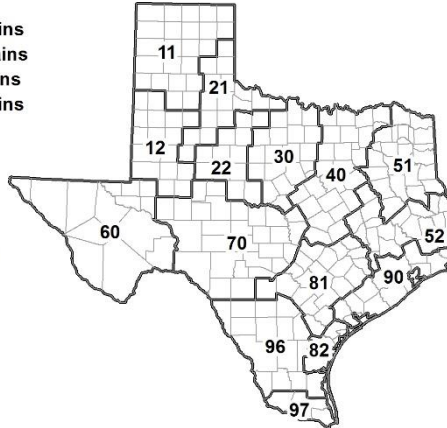
(NA) Not available.

**Soil Moisture and Days Suitable by District
For Week Ending January 19, 2025**

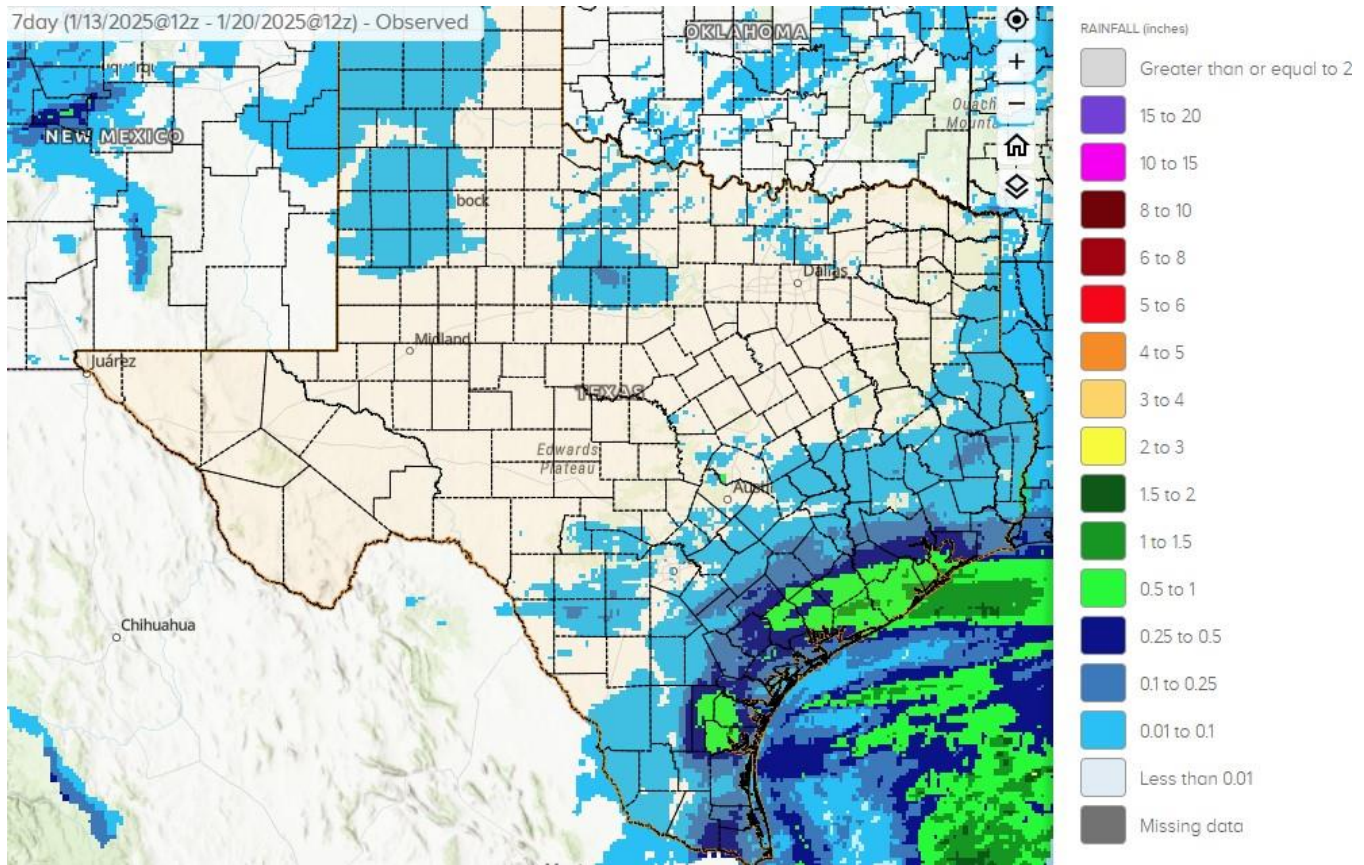
District	Subsoil Moisture Condition by District				Topsoil Moisture Condition by District				Days Suitable for Fieldwork
	Percentage of Acreage				Percentage of Acreage				
	Very Short	Short	Adequate	Surplus	Very Short	Short	Adequate	Surplus	
11	9	23	67	1	11	21	67	1	4.0
12	36	51	13	0	36	37	27	0	4.4
21	10	75	15	0	14	57	29	0	5.3
22	25	51	24	0	26	50	24	0	6.7
30	4	51	44	1	4	61	35	0	5.4
40	15	25	52	8	18	22	43	17	4.7
51	1	8	81	10	0	13	77	10	6.6
52	3	18	45	34	1	17	45	37	5.4
60	0	56	44	0	0	56	44	0	7.0
70	47	28	24	1	42	43	15	0	6.8
81	16	66	18	0	18	57	25	0	6.9
82	90	10	0	0	100	0	0	0	7.0
90	0	4	50	46	0	4	39	57	1.9
96	30	53	17	0	18	34	48	0	5.0
97	20	47	31	2	41	43	14	2	5.4
State	19	38	38	5	21	33	40	6	5.0

Texas Agricultural Districts

- 11 Northern High Plains
- 12 Southern High Plains
- 21 Northern Low Plains
- 22 Southern Low Plains
- 30 Cross Timbers
- 40 Blacklands
- 51 North East
- 52 South East
- 60 Trans-Pecos
- 70 Edwards Plateau
- 81 South Central
- 82 Coastal Bend
- 90 Upper Coast
- 96 South
- 97 Lower Valley

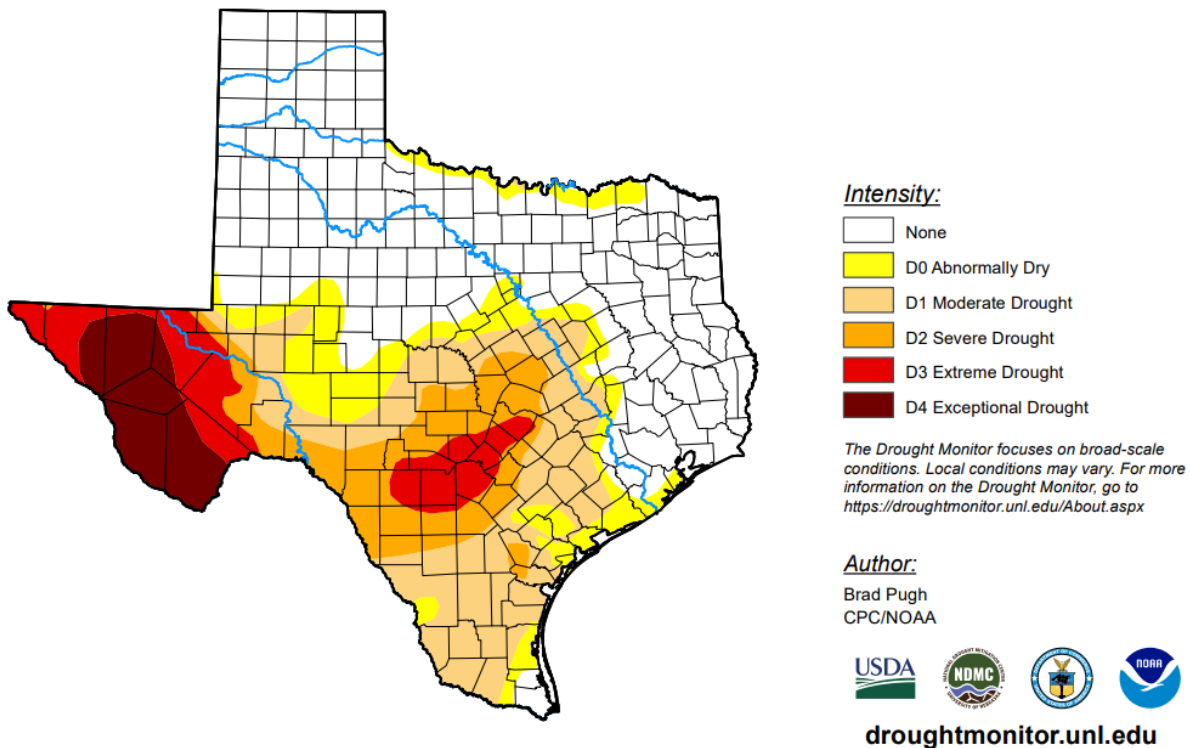


Seven Day Observed Regional Precipitation, January 19, 2025



Source: National Weather Service, www.nws.noaa.gov

Drought Monitor, Map Released: January 16, 2025



Source: National Drought Mitigation Center, a partnership with USDA, U.S. Department of Commerce/NOAA, <http://droughtmonitor.unl.edu>