



**United States Department of Agriculture  
National Agricultural Statistics Service**

# South Carolina Crop Progress and Condition Report



**Cooperating with the South Carolina Department of Agriculture**  
Southern Regional Field Office · 355 East Hancock Avenue, Suite 100 · Athens, GA 30601 · (800) 253-4419  
[www.nass.usda.gov](http://www.nass.usda.gov)

This report contains data collected each week from respondents across the state whose occupations provide them opportunities to discuss agricultural production with farmers in their counties as well as to make visual observations. We thank all who have contributed to this report.

September 9, 2024

Media Contact: Jacqueline Moore

## General

According to the National Agricultural Statistics Service in South Carolina, there were 6.7 days suitable for fieldwork for the week ending Sunday, September 8, 2024. Precipitation totals from available reporting stations ranged from trace amounts to 4.0 inches of rain. Average high temperatures ranged from the high 70s to the high 80s. Average low temperatures ranged from the low 60s to the low 70s.

## Crops

It was a dry week for most of the state last week, with only isolated portions of the Midlands and Upstate as well as coastal areas of the Lowcountry and Pee Dee regions receiving a significant amount of precipitation. The milder temperatures, together with limited precipitation, allowed operators to conduct a significant amount of field work throughout the week. Armyworms continued to damage many fields, with hay and soybeans particularly impacted. There were also concerns about some soybean fields making it through maturity due to prolonged drought conditions. Corn continued to be harvested throughout the week, with irrigated corn noted to have particularly strong yields. Cotton remained in mostly good condition, although some fields were noted to still be twisted from Tropical Storm Debby. Some farmers were beginning to plant fall greens where access to irrigation was available.

## Livestock and Pastures

Cattle were in mostly good to fair condition, while pastures were in mostly fair to good. Pastures in drier regions of the state continued to deteriorate, but those in areas that received rain were reported to have improved in condition.

## Crop Progress for Week Ending 9/8/24

Crop stage	Prev year	Prev week	This week	5 Year avg
	(percent)	(percent)	(percent)	(percent)
Corn - Harvested .....	68	57	72	71
Cotton - Bolls Opening .....	30	35	52	32
Hay - 2nd Cutting .....	99	93	95	98
Hay - 3rd Cutting .....	29	11	37	16
Peanuts - Dug .....	3	1	4	3
Soybeans - Setting Pods ...	75	84	91	67
Soybeans - Drop Leaves ...	8	NA	3	4

(NA) Not Available

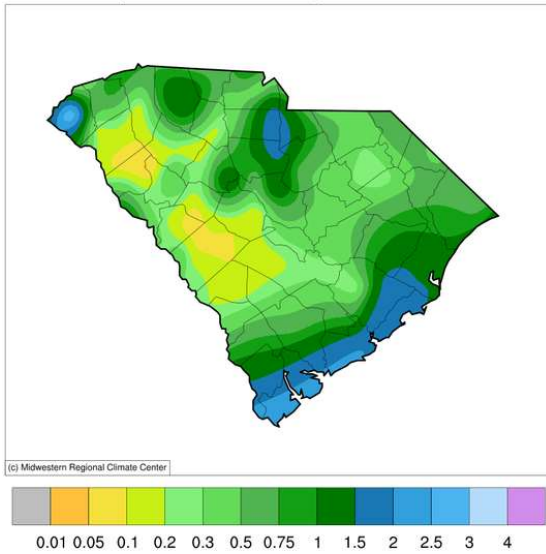
## Conditions for Week Ending 9/8/24

Crop	Very poor	Poor	Fair	Good	Excellent
	(percent)	(percent)	(percent)	(percent)	(percent)
Cattle .....	2	12	36	47	3
Cotton .....	3	12	30	53	2
Pasture and range ....	12	24	33	29	2
Peanuts .....	3	10	26	56	5
Soybeans .....	1	7	36	53	3

## Soil Moisture for Week Ending 9/8/24

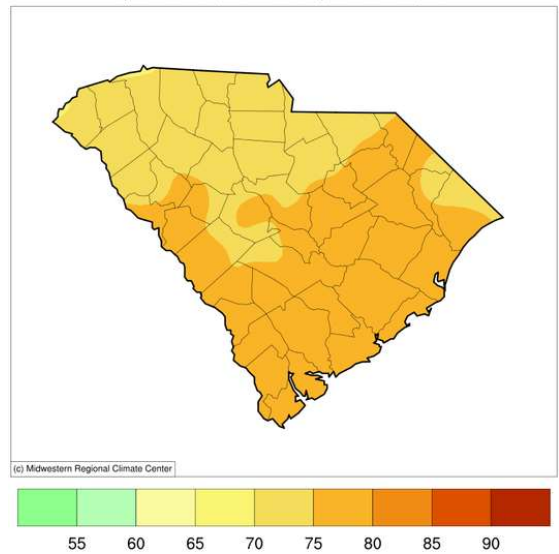
Topsoil	Previous week	This week
	(percent)	(percent)
Very short .....	8	16
Short .....	31	39
Adequate .....	54	45
Surplus .....	7	0
Subsoil	Previous week	This week
	(percent)	(percent)
Very short .....	7	12
Short .....	27	36
Adequate .....	59	52
Surplus .....	7	0

**Accumulated Precipitation (in)**  
September 02, 2024 to September 08, 2024



<https://mrcc.purdue.edu/CLIMATE>

**Average Temperature (°F)**  
September 02, 2024 to September 08, 2024

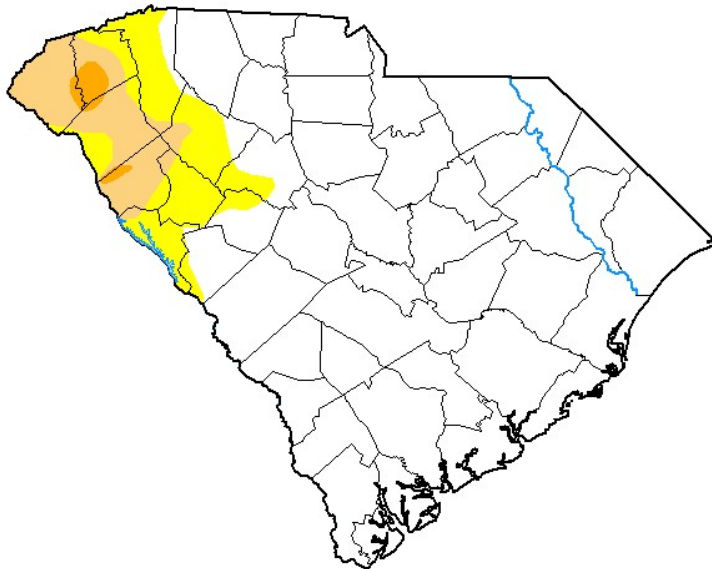


<https://mrcc.purdue.edu/CLIMATE>

For the state's complete Weekly Weather Summary: [http://www.dnr.sc.gov/climate/sco/ClimateData/cli\\_reports\\_2024.php](http://www.dnr.sc.gov/climate/sco/ClimateData/cli_reports_2024.php)

## U.S. Drought Monitor South Carolina

**September 3, 2024**  
(Released Thursday, Sep. 5, 2024)  
Valid 8 a.m. EDT



*Drought Conditions (Percent Area)*

	None	D0-D4	D1-D4	D2-D4	D3-D4	D4
<b>Current</b>	84.22	15.78	7.05	0.82	0.00	0.00
<b>Last Week</b> 08-27-2024	85.23	14.77	5.27	0.00	0.00	0.00
<b>3 Months Ago</b> 06-04-2024	86.51	13.49	0.00	0.00	0.00	0.00
<b>Start of Calendar Year</b> 01-02-2024	60.82	39.18	16.08	1.61	0.00	0.00
<b>Start of Water Year</b> 09-26-2023	76.91	23.09	1.19	0.00	0.00	0.00
<b>One Year Ago</b> 09-05-2023	83.60	16.40	1.19	0.00	0.00	0.00

**Intensity:**

- None
- D0 Abnormally Dry
- D1 Moderate Drought
- D2 Severe Drought
- D3 Extreme Drought
- D4 Exceptional Drought

*The Drought Monitor focuses on broad-scale conditions. Local conditions may vary. For more information on the Drought Monitor, go to <https://droughtmonitor.unl.edu/About.aspx>*

**Author:**

Lindsay Johnson  
National Drought Mitigation Center



[droughtmonitor.unl.edu](https://droughtmonitor.unl.edu)