



**United States Department of Agriculture
National Agricultural Statistics Service**

South Carolina Crop Progress and Condition Report



Cooperating with the South Carolina Department of Agriculture
Southern Regional Field Office · 355 East Hancock Avenue, Suite 100 · Athens, GA 30601 · (800) 253-4419
www.nass.usda.gov

This report contains data collected each week from respondents across the state whose occupations provide them opportunities to discuss agricultural production with farmers in their counties as well as to make visual observations. We thank all who have contributed to this report.

August 19, 2024

Media Contact: Jacqueline Moore

General

According to the National Agricultural Statistics Service in South Carolina, there were 4.5 days suitable for fieldwork for the week ending Sunday, August 18, 2024. Precipitation totals from available reporting stations ranged from no rain to over 4 inches of rain. Average high temperatures ranged from the mid 80s to the low 90s. Average low temperatures ranged from the mid 60s to the high 70s.

Crops

Most of the state received a moderate amount of rain last week, with the Pee Dee region receiving the least amount of precipitation. When conditions allowed, operators conducted a significant amount of spraying of fungicides and insecticides on crops across the state. Reporters noted instances of corn lodging and cotton twisting due to Tropical Storm Debby. There were also reports of some cotton fields losing their blossoms and yellowing due to recent rains. Peanuts were in mostly good condition, although there were reports of wilting in some overly saturated fields. Some operators began to plant fall green vegetables in preparation for Thanksgiving markets.

Livestock and Pastures

Cattle were in mostly good to fair condition, while pastures were mostly fair to good. Armyworms continued to be a problem across the state, with treatment ongoing to prevent further damage in hay and pasture fields.

Crop Progress for Week Ending 8/18/24

Crop stage	Prev year (percent)	Prev week (percent)	This week (percent)	5 Year avg (percent)
Corn - Mature	87	80	88	85
Corn - Harvested	18	12	17	16
Cotton - Setting Bolls	87	93	97	89
Cotton - Bolls Opening	5	3	6	4
Hay - 2nd Cutting	85	82	85	84
Soybeans - Blooming	79	85	92	77
Soybeans - Setting Pods ...	48	53	65	39

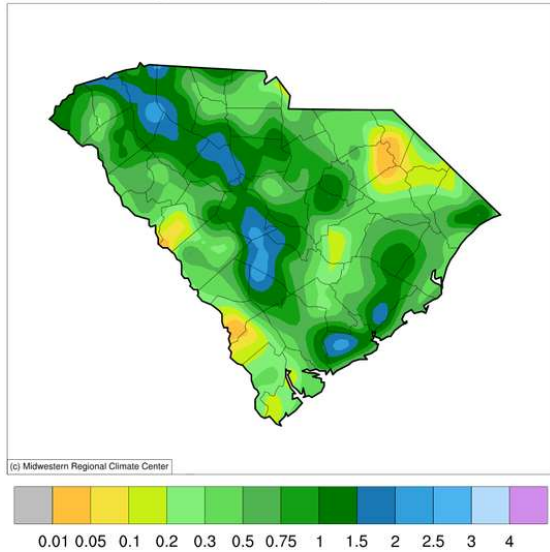
Conditions for Week Ending 8/18/24

Crop	Very poor (percent)	Poor (percent)	Fair (percent)	Good (percent)	Excellent (percent)
Cattle	0	7	29	59	5
Corn	32	35	22	10	1
Cotton	2	10	36	50	2
Pasture and range	5	17	38	35	5
Peanuts	0	7	29	58	6
Soybeans	1	7	40	50	2

Soil Moisture for Week Ending 8/18/24

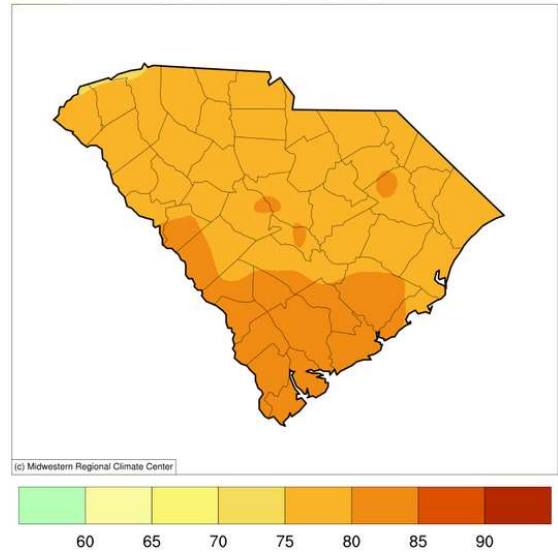
Topsoil	Previous week (percent)	This week (percent)
Very short	1	2
Short	5	8
Adequate	40	52
Surplus	54	38
Subsoil	Previous week (percent)	This week (percent)
Very short	2	5
Short	8	8
Adequate	39	57
Surplus	51	30

Accumulated Precipitation (in)
August 12, 2024 to August 18, 2024



<https://mrcc.purdue.edu/CLIMATE>

Average Temperature (°F)
August 12, 2024 to August 18, 2024

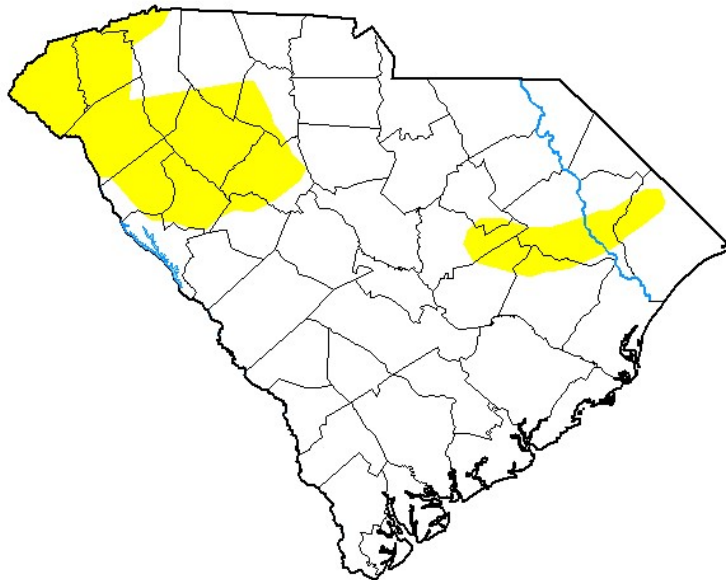


<https://mrcc.purdue.edu/CLIMATE>

For the state's complete Weekly Weather Summary: http://www.dnr.sc.gov/climate/sco/ClimateData/cli_reports_2024.php

U.S. Drought Monitor South Carolina

August 13, 2024
(Released Thursday, Aug. 15, 2024)
Valid 8 a.m. EDT



Drought Conditions (Percent Area)

	None	D0-D4	D1-D4	D2-D4	D3-D4	D4
Current	80.73	19.27	0.00	0.00	0.00	0.00
Last Week <i>08-06-2024</i>	32.43	67.57	20.72	3.95	0.00	0.00
3 Months Ago <i>05-14-2024</i>	100.00	0.00	0.00	0.00	0.00	0.00
Start of Calendar Year <i>01-02-2024</i>	60.82	39.18	16.08	1.61	0.00	0.00
Start of Water Year <i>09-26-2023</i>	76.91	23.09	1.19	0.00	0.00	0.00
One Year Ago <i>08-15-2023</i>	82.93	17.07	0.00	0.00	0.00	0.00

Intensity:

- None
- D0 Abnormally Dry
- D1 Moderate Drought
- D2 Severe Drought
- D3 Extreme Drought
- D4 Exceptional Drought

The Drought Monitor focuses on broad-scale conditions. Local conditions may vary. For more information on the Drought Monitor, go to <https://droughtmonitor.unl.edu/About.aspx>

Author:

Curtis Riganti
National Drought Mitigation Center



droughtmonitor.unl.edu