



United States Department of Agriculture
National Agricultural Statistics Service
**South Carolina Crop Progress
and Condition Report**



Cooperating with the South Carolina Department of Agriculture
Southern Region, South Carolina Field Office · 208G Wholesale Lane · West Columbia, SC 29172 · (706) 713-5400
www.nass.usda.gov

This report contains data collected each week from respondents across the state whose occupations provide them opportunities to discuss agricultural production with farmers in their counties as well as to make visual observations. We thank all who have contributed to this report.

October 18, 2021

Media Contact: Jacqueline Moore

General

According to the National Agricultural Statistics Service in South Carolina, there were 6.3 days suitable for fieldwork for the week ending Sunday, October 17, 2021. There was little to no precipitation last week. Average high temperatures ranged from the high 70s to the high 80s. Average low temperatures ranged from the low 50s to the high 60s.

Crops

Dry weather allowed field work to progress unhindered. The corn harvest progressed well and was nearly complete. Cotton bolls were mostly open, and the harvest should pick up soon. Peanuts dug and harvested made substantial progress from the previous week due to the favorable conditions. Soybeans dropping leaves remained behind historic averages but progressed well from the previous week. Strawberry transplanting was off to a slow start with growers receiving plugs and crowns from nurseries, later than normal.

Livestock and Pastures

Cattle and pasture condition remained in mostly good and excellent condition.

Crop Progress for Week Ending 10/17/21

Crop stage	Prev year (percent)	Prev week (percent)	This week (percent)	5 Year avg (percent)
Corn - Harvested	98	95	96	99
Cotton - Bolls Opening.....	91	83	90	92
Cotton - Harvested.....	5	6	8	24
Hay - 3rd Cutting.....	82	76	82	77
Peanuts - Dug.....	58	38	51	65
Peanuts - Harvested	39	25	36	44
Soybeans - Dropping Leaves.....	73	39	48	61
Soybeans - Harvested	4	3	5	5
Winter wheat - Planted.....	8	3	5	6

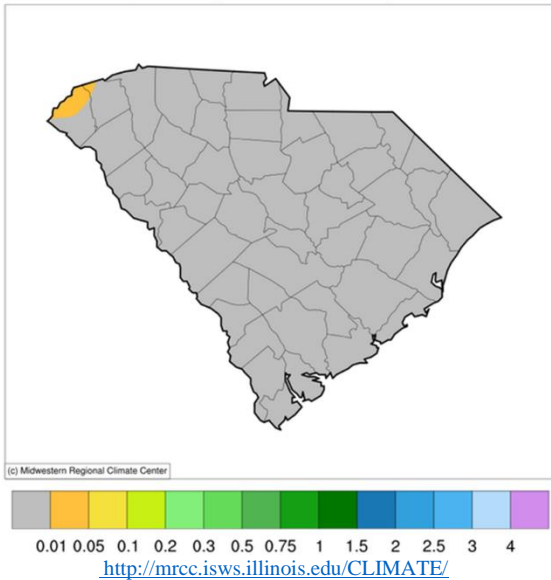
Conditions for Week Ending 10/17/21

Crop	Very poor (percent)	Poor (percent)	Fair (percent)	Good (percent)	Excellent (percent)
Cattle	0	1	8	76	15
Cotton.....	0	0	13	65	22
Pasture and range	0	3	35	60	2
Peanuts	0	0	10	75	15
Soybeans	0	1	12	65	22

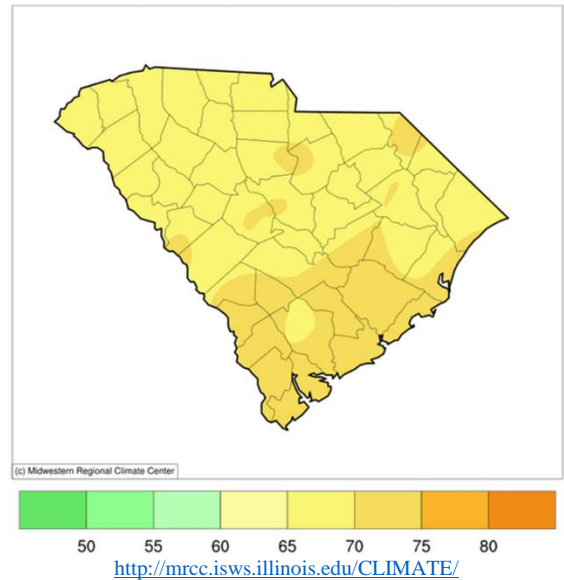
Soil Moisture for Week Ending 10/17/21

Topsoil	Previous week (percent)	This week (percent)
Very short	1	1
Short.....	16	26
Adequate	73	64
Surplus	10	9
Subsoil	Previous week (percent)	This week (percent)
Very short	0	0
Short.....	12	20
Adequate	82	80
Surplus	6	0

Accumulated Precipitation (in)
October 11, 2021 to October 17, 2021



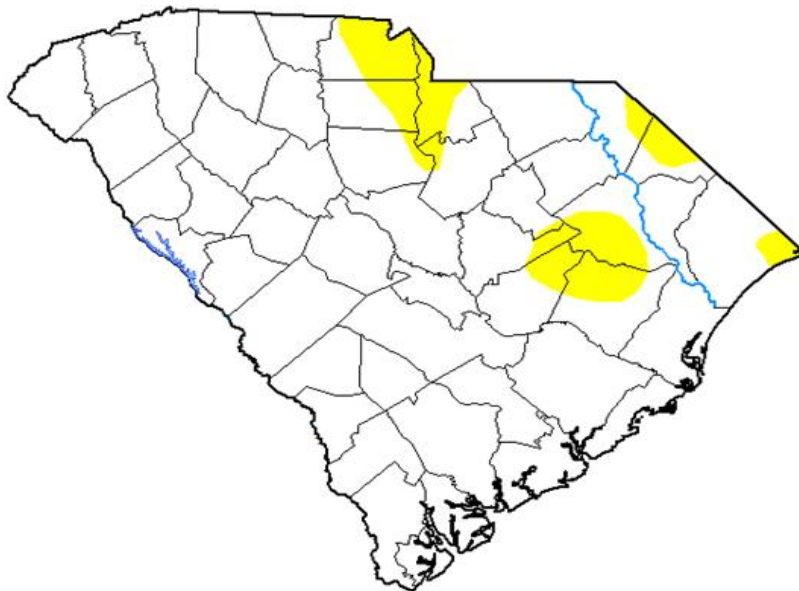
Average Temperature (°F)
October 11, 2021 to October 17, 2021



For the state's complete Weekly Weather Summary http://www.dnr.sc.gov/climate/sco/ClimateData/cli_reports_2021.php

U.S. Drought Monitor South Carolina

October 12, 2021
(Released Thursday, Oct. 14, 2021)
Valid 8 a.m. EDT



Drought Conditions (Percent Area)

	None	D0-D4	D1-D4	D2-D4	D3-D4	D4
Current	91.21	8.79	0.00	0.00	0.00	0.00
Last Week 10-05-2021	92.21	7.79	0.00	0.00	0.00	0.00
3 Months Ago 07-13-2021	94.48	5.52	0.00	0.00	0.00	0.00
Start of Calendar Year 12-29-2020	86.70	13.30	0.00	0.00	0.00	0.00
Start of Water Year 09-28-2021	98.41	1.59	0.00	0.00	0.00	0.00
One Year Ago 10-13-2020	99.42	0.58	0.00	0.00	0.00	0.00

Intensity:

- None
- D0 Abnormally Dry
- D1 Moderate Drought
- D2 Severe Drought
- D3 Extreme Drought
- D4 Exceptional Drought

The Drought Monitor focuses on broad-scale conditions. Local conditions may vary. For more information on the Drought Monitor, go to <https://droughtmonitor.unl.edu/About.aspx>

Author:

Adam Hartman
NOAA/NWS/NCEP/CPC



droughtmonitor.unl.edu