



**United States Department of Agriculture
National Agricultural Statistics Service**

South Carolina Crop Progress and Condition Report



Cooperating with the South Carolina Department of Agriculture
Southern Region, South Carolina Field Office · 208G Wholesale Lane · West Columbia, SC 29172 · (803) 734-2506
www.nass.usda.gov

July 27, 2015

Media Contact: Eddie Wells

General

According to the National Agriculture Statistics Service’s South Carolina Field Office, there were 6.0 days suitable for fieldwork for the week ending Sunday, July 26, 2015. Precipitation estimates for the state ranged from 0.1 inches of rain up to 2.67 inches. Average high temperatures ranged from the low 90s to the low 100s. Average low temperatures ranged from the high 60s to the mid 70s.

County Extension Comments

“The corn in Horry has done what it’s going to do for the most part. We are at about an R4-R5 in most of the corn. Soybeans and cotton has been stalling for a while, waiting for some moisture. This past week should have given us the moisture we needed for the cotton and beans to go ahead and fill out some (vegetatively). The heat and lack of moisture has shown some scalding of tobacco leaves. Also, the added heat and drought stress has caused an increase of the disease symptoms of Black Shank and Bacteria Wilt. Overall the leaf quality has been up, as compared to the last couple of wet years. Even though some of the tobacco may be a little on the small side, its been very gummy/heavy this year.”

William Hardee, Horry County, District 30

“Some scattered storms brought rain to some areas of the county late in the week. Moderate temperatures this week should help with crop stress. Some corn destroyed due to drought and heat in the county. A small amount of cotton also plowed under.”

Charles Davis, Calhoun County, District 50

“In most areas, crops have been affected by the heat and drought. Some areas are worse than others. One vegetable farmer has reported that the weather conditions has caused issues for his summer kale, mustard, and other leafy greens.”

Mark Nettles, Orangeburg County, District 50

“A brief rain in most areas during the week was helpful to crops. Peach harvest is continuing. Watermelon and cantaloupe harvest is about complete. Harvest of corn will begin for some growers next week. No insect or disease problems reported this week. More is needed to maintain crop condition and yield potential.”

Hugh Gray, Allendale County, District 80

Crop Progress for Week Ending 07/26/15

Crop stage	This week (percent)	Prev week (percent)	Prev year (percent)	5 Year avg (percent)
Corn - Dough	93	84	95	92
Corn - Mature	37	22	31	36
Cotton - Squaring	97	73	96	89
Cotton - Setting Bolls.....	70	33	82	47
Hay - 2nd Cutting	50	18	NA	NA
Peaches - Harvested.....	80	73	73	74
Peanuts - Pegging.....	97	85	95	86
Soybeans - Planted.....	100	97	99	99
Soybeans - Emerged.....	99	95	98	98
Soybeans - Blooming	24	13	60	41
Tobacco - Topped.....	95	71	99	96
Tobacco - Harvested.....	27	NA	45	40

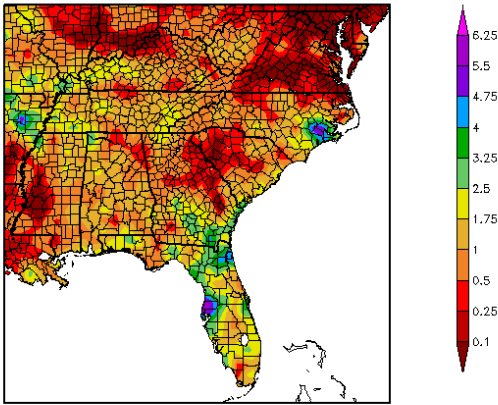
Crop Condition for Week Ending 07/26/15

Crop	Very poor (percent)	Poor (percent)	Fair (percent)	Good (percent)	Excellent (percent)
Cattle	0	1	13	84	2
Corn	20	15	24	37	4
Cotton	1	7	50	40	2
Hay	2	14	30	53	1
Pasture and range.....	2	16	45	35	2
Peanuts.....	1	1	41	53	4
Soybeans.....	5	18	37	38	2
Tobacco.....	1	11	35	43	10

Soil Moisture for Week Ending 07/26/15

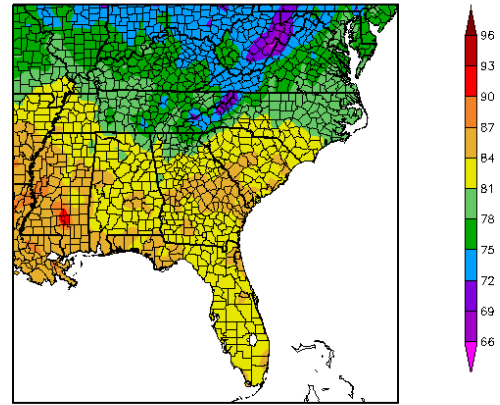
Topsoil	This week (percent)	Previous week (percent)	5 Year avg (percent)
Very short.....	11	14	15
Short.....	62	38	32
Adequate.....	27	43	45
Surplus.....	0	5	8
Subsoil	This week (percent)	Previous week (percent)	5 Year avg (percent)
Very short.....	16	13	NA
Short.....	51	37	NA
Adequate.....	32	45	NA
Surplus.....	1	5	NA

Precipitation (in)
7/20/2015 - 7/26/2015



Generated 7/27/2015 at HPRCC using provisional data.
www.hprcc.unl.edu/

Temperature (F)
7/20/2015 - 7/26/2015



Regional Climate Centers Generated 7/27/2015 at HPRCC using provisional data.
www.hprcc.unl.edu/

Regional Climate Centers

For the state's complete Weekly Weather Summary: http://www.dnr.sc.gov/climate/sco/ClimateData/cli_reports_2015.php

U.S. Drought Monitor South Carolina

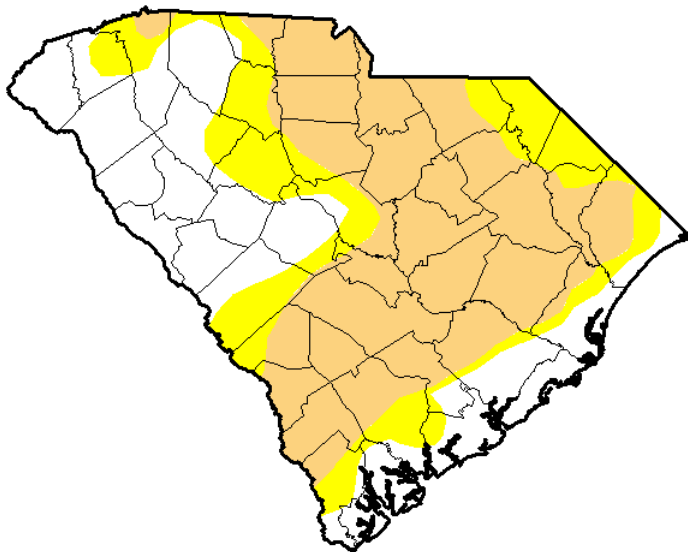
July 21, 2015

(Released Thursday, Jul. 23, 2015)

Valid 8 a.m. EDT

Drought Conditions (Percent Area)

	None	D0-D4	D1-D4	D2-D4	D3-D4	D4
Current	32.48	67.52	46.24	0.00	0.00	0.00
Last Week 7/14/2015	33.06	66.94	38.43	0.00	0.00	0.00
3 Months Ago 4/21/2015	99.72	0.28	0.00	0.00	0.00	0.00
Start of Calendar Year 12/02/2014	96.63	3.37	0.00	0.00	0.00	0.00
Start of Water Year 8/30/2014	47.90	52.10	0.00	0.00	0.00	0.00
One Year Ago 7/22/2014	74.55	25.45	0.00	0.00	0.00	0.00



Intensity

- D0 Abnormally Dry
- D1 Moderate Drought
- D2 Severe Drought
- D3 Extreme Drought
- D4 Exceptional Drought

The Drought Monitor focuses on broad-scale conditions. Local conditions may vary. See accompanying text summary for forecast statements.

Author:

David Simeral
Western Regional Climate Center



<http://droughtmonitor.unl.edu/>