



Slaughter

Data Relating to January, 2025

Southern Plains Regional Field Office · Post Office Box 70, Austin, Texas 78767 · 800-626-3142 · www.nass.usda.gov
Cooperating with the Oklahoma Department of Agriculture, Food and Forestry and Texas Department of Agriculture

U.S. Commercial Red Meat Production Up 2 Percent

Thank you to all those who respond to the monthly slaughter report. Without your participation we could not provide you with the timely data that is necessary in today's fast moving economy. This report is a summary of slaughter reports for Oklahoma, and Texas, which together comprise the Southern Plains region. Additionally, this report includes a summary of national data.

Commercial Red Meat Production, January 2024 and 2025

State	January 2024	December 2024	January 2025	January 2025 as % of 2024
	<i>million pounds</i>	<i>million pounds</i>	<i>million pounds</i>	<i>percent</i>
Oklahoma	116.9	104.0	115.7	99
Texas	386.0	360.4	381.9	99
United States	4,768.0	4,544.4	4,885.3	102

Commercial Cattle Slaughter, January 2024 and 2025

State	Number Slaughtered		Total Live Weight		Average Live Weight	
	2024	2025	2024	2025	2024	2025
	<i>head</i>	<i>head</i>	<i>pounds</i>	<i>pounds</i>	<i>pounds</i>	<i>pounds</i>
Oklahoma	5,800	6,700	6,759,000	8,174,000	1,173	1,238
Texas	476,400	457,600	632,094,000	624,547,000	1,330	1,368
United States	2,730,300	2,716,600	3,784,234,000	3,902,470,000	1,389	1,439

Commercial Hog Slaughter, January 2024 and 2025

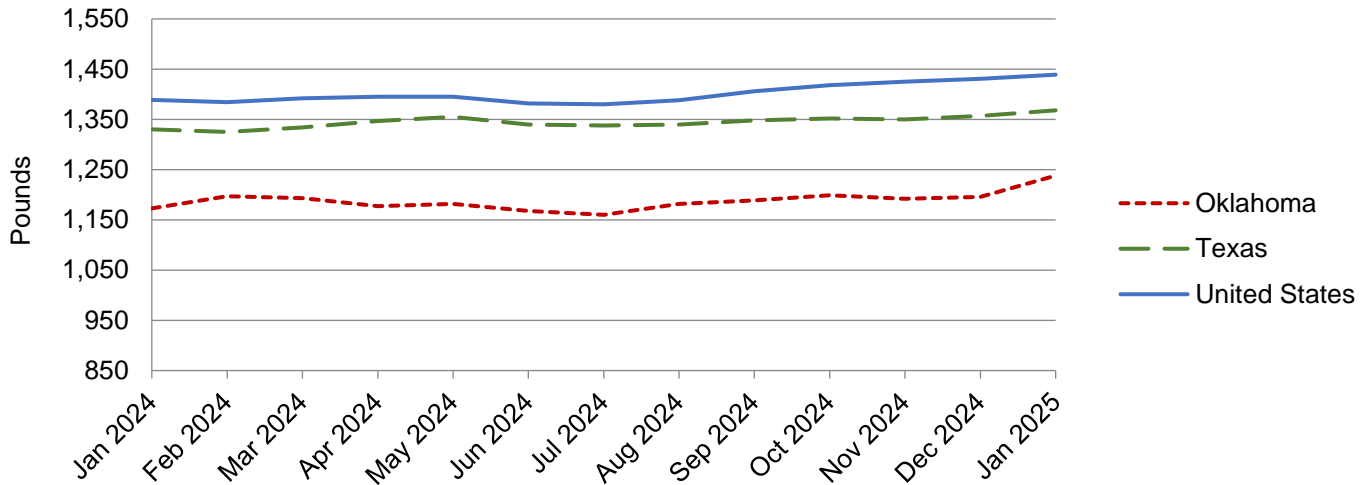
State	Number Slaughtered		Total Live Weight		Average Live Weight	
	2024	2025	2024	2025	2024	2025
	<i>head</i>	<i>head</i>	<i>pounds</i>	<i>pounds</i>	<i>pounds</i>	<i>pounds</i>
Oklahoma	489,700	501,500	146,951,000	145,834,000	300	291
Texas	22,600	23,900	4,581,000	4,606,000	203	193
United States	11,368,700	11,467,300	3,323,269,000	3,355,889,000	292	293

Commercial Sheep and Lamb Slaughter, January 2024 and 2025

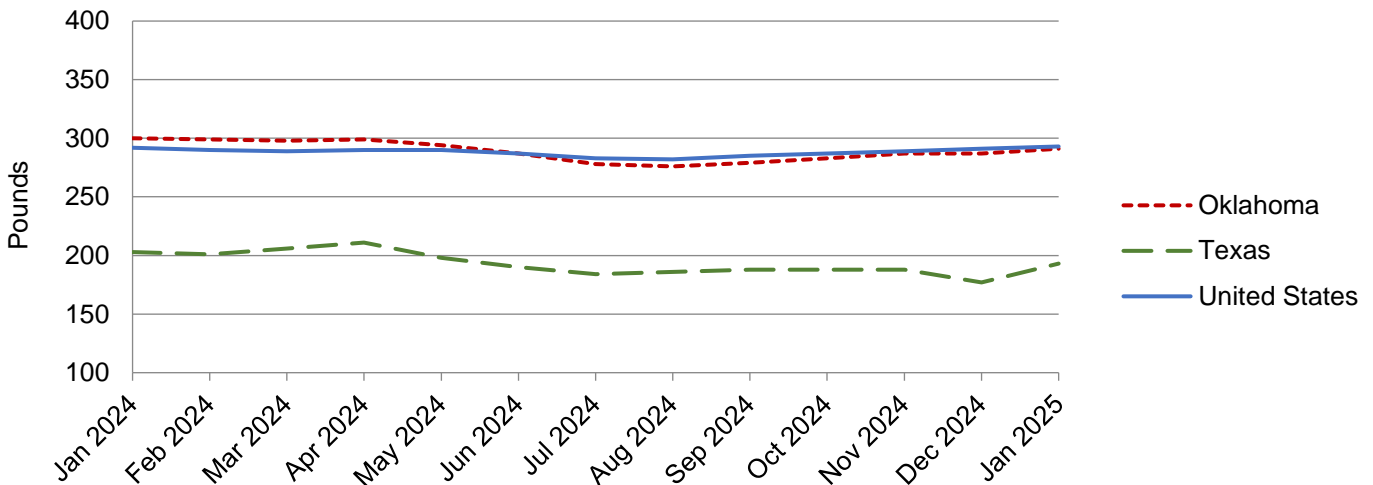
State	Number Slaughtered		Total Live Weight		Average Live Weight	
	2024	2025	2024	2025	2024	2025
	<i>head</i>	<i>head</i>	<i>pounds</i>	<i>pounds</i>	<i>pounds</i>	<i>pounds</i>
Oklahoma	(D)	(D)	(D)	(D)	(D)	(D)
Texas	21,600	22,600	2,405,000	2,513,000	111	111
United States	171,700	173,500	20,802,000	21,334,000	121	123

(D) Withheld to avoid disclosing data for individual operations.

Cattle: Live Weight per Head, Southern Plains and U.S., 2024-2025



Hogs: Live Weight per Head, Southern Plains and U.S., 2024-2025



NASS provides accurate, timely, useful and objective statistics in service to U.S. agriculture. In order to view the full national report, please visit the following website: www.nass.usda.gov/Publications/.