



# Cattle on Feed

Southern Plains Regional Field Office · Post Office Box 70, Austin, Texas 78767 · 800-626-3142 · [www.nass.usda.gov](http://www.nass.usda.gov)

Cooperating with the Oklahoma Department of Agriculture, Food and Forestry and Texas Department of Agriculture

September 23, 2022

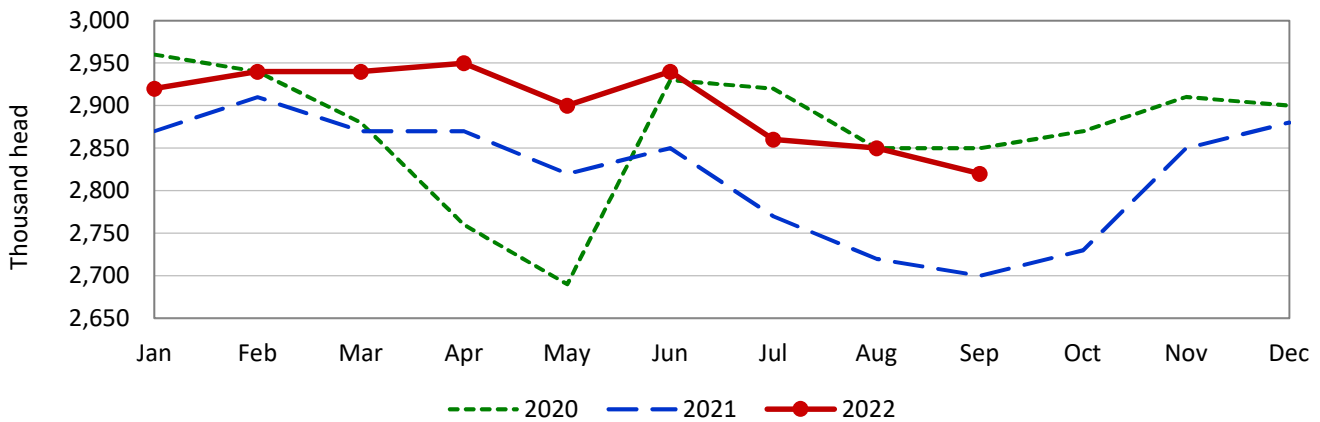
Contact: Jenna Bates or Carol Pittman

This report contains results from the September 2022 Cattle on Feed Survey collected during the first two weeks of September. Data provided by Oklahoma and Texas producers are the foundation of the estimates made for the Southern Plains region. We would like to thank all producers who responded to the survey. Results from the next monthly survey will be made available on October 21, 2022.

Cattle and calves on feed for slaughter market in **Texas** feedlots with capacity of 1,000 head or more totaled 2.82 million head on September 1, 2022, up 4 percent from a year ago. Producers placed 430 thousand head in commercial feedlots during August, up 9 percent from a year ago. Texas commercial feeders marketed 450 thousand head during August, up 13 percent from 2021.

On September 1, there were 2.50 million head of cattle and calves on feed in the Northern High Plains, 89 percent of the state's total. The number on feed across the area was up 4 percent from last year but down 1 percent from the August 1 total. August placements in the Northern High Plains totaled 382 thousand head, up 9 percent from the July total. Marketings were up 16 percent from last month at 408 thousand head.

## Texas Cattle on Feed Inventory

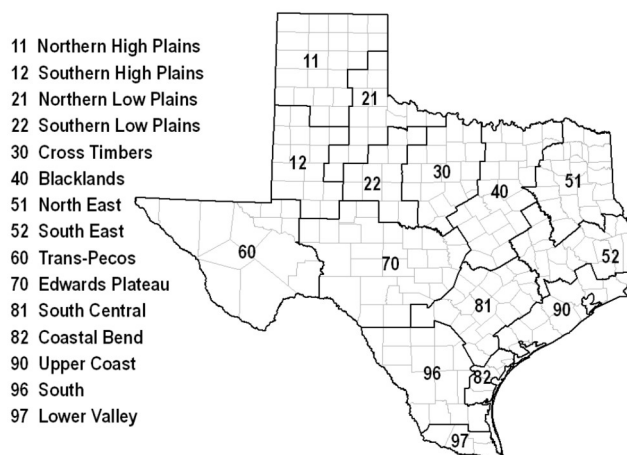


## Texas Cattle and Calves on Feed in 1,000+ Capacity Feedlots, by District

| Cattle and Calves                              | District 11 | District 12 | District 21 | District 70 | District 81 | District 96 | Other districts | State total |
|--|-------------|-------------|-------------|-------------|-------------|-------------|-----------------|-------------|
|  | 1,000 head  | 1,000 head  | 1,000 head  | 1,000 head  | 1,000 head  | 1,000 head  | 1,000 head      | 1,000 head  |
| On feed August 1, 2022 <sup>1</sup>            | 2,535       | 148         | 52          | 13          | 23          | 41          | 38              | 2,850       |
| Placed on feed during August                   | 382         | 29          | 5           | 1           | 2           | 5           | 6               | 430         |
| Fed cattle marketed during August              | 408         | 23          | 3           | 1           | 4           | 6           | 5               | 450         |
| Other disappearance during August <sup>2</sup> | 9           | 1           | 0           | 0           | 0           | 0           | 0               | 10          |
| On feed September 1, 2022 <sup>1</sup>         | 2,500       | 153         | 54          | 13          | 21          | 40          | 39              | 2,820       |

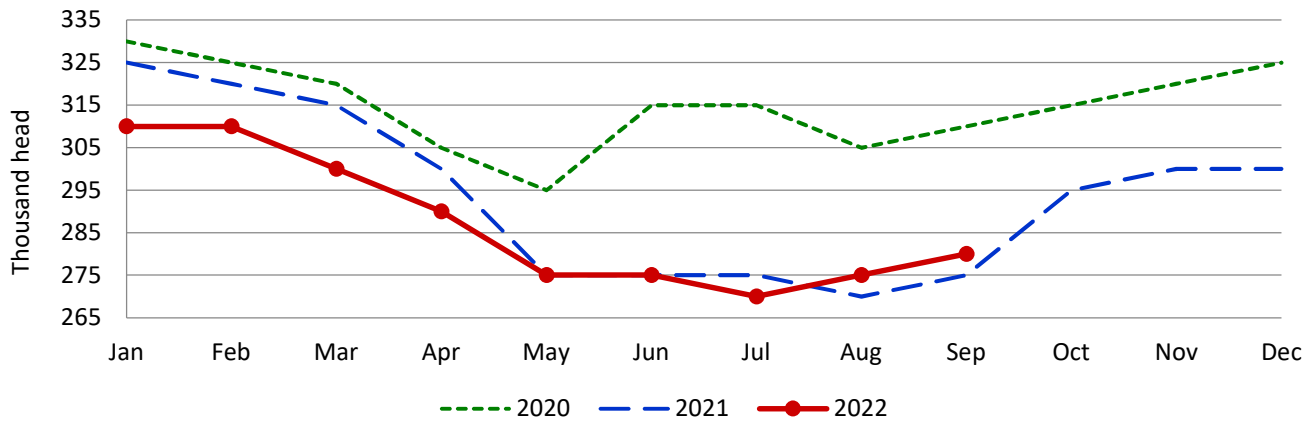
<sup>1</sup> Cattle and calves on feed are animals for slaughter market being fed a ration of grain or other concentrates and are expected to produce a carcass that will grade select or better.

<sup>2</sup> Included death losses, movement from feedlots to pasture and shipments to other feedlots for further feeding.



Cattle and calves on feed for slaughter market in **Oklahoma** feedlots with capacity of 1,000 head or more totaled 280 thousand head on September 1, 2022, up 2 percent from a year ago. Producers placed 49 thousand head in commercial feedlots during August, down 14 percent from a year ago. Oklahoma commercial feeders marketed 42 thousand head during August, down 18 percent from 2021. Other disappearance during August totaled 2 thousand head, up 1,000 head from a year ago.

### Oklahoma Cattle on Feed Inventory



### Cattle and Calves: Placements, Marketings, Other Disappearance and Inventory in 1,000+ Capacity Feedlot

| State                | Cattle and Calves |                   |                              |                   |                        |                   |                                   |                   |                     |                   |
|----------------------|-------------------|-------------------|------------------------------|-------------------|------------------------|-------------------|-----------------------------------|-------------------|---------------------|-------------------|
|                      | On feed August 1  |                   | Placed on feed during August |                   | Marketed during August |                   | Other Disappearance during August |                   | On feed September 1 |                   |
|                      | 2021              | 2022              | 2021                         | 2022              | 2021                   | 2022              | 2021                              | 2022              | 2021                | 2022              |
|                      | <i>1,000 head</i> | <i>1,000 head</i> | <i>1,000 head</i>            | <i>1,000 head</i> | <i>1,000 head</i>      | <i>1,000 head</i> | <i>1,000 head</i>                 | <i>1,000 head</i> | <i>1,000 head</i>   | <i>1,000 head</i> |
| Arizona.....         | 274               | 279               | 19                           | 20                | 23                     | 24                | 1                                 | 1                 | 269                 | 274               |
| California.....      | 540               | 545               | 52                           | 50                | 54                     | 68                | 8                                 | 7                 | 530                 | 520               |
| Colorado.....        | 1,040             | 1,040             | 220                          | 180               | 175                    | 185               | 5                                 | 5                 | 1,080               | 1,030             |
| Idaho.....           | 275               | 275               | 53                           | 45                | 37                     | 44                | 1                                 | 1                 | 290                 | 275               |
| Iowa.....            | 600               | 580               | 77                           | 89                | 85                     | 78                | 2                                 | 1                 | 590                 | 590               |
| Kansas.....          | 2,410             | 2,340             | 530                          | 535               | 460                    | 485               | 10                                | 10                | 2,470               | 2,380             |
| Minnesota.....       | 95                | 85                | 14                           | 18                | 18                     | 12                | 1                                 | 1                 | 90                  | 90                |
| Nebraska.....        | 2,200             | 2,320             | 555                          | 570               | 465                    | 510               | 10                                | 10                | 2,280               | 2,370             |
| <b>Oklahoma.....</b> | <b>270</b>        | <b>275</b>        | <b>57</b>                    | <b>49</b>         | <b>51</b>              | <b>42</b>         | <b>1</b>                          | <b>2</b>          | <b>275</b>          | <b>280</b>        |
| South Dakota.....    | 195               | 165               | 44                           | 43                | 37                     | 31                | 2                                 | 2                 | 200                 | 175               |
| <b>Texas.....</b>    | <b>2,720</b>      | <b>2,850</b>      | <b>395</b>                   | <b>430</b>        | <b>400</b>             | <b>450</b>        | <b>15</b>                         | <b>10</b>         | <b>2,700</b>        | <b>2,820</b>      |
| Washington.....      | 190               | 200               | 36                           | 32                | 30                     | 31                | 1                                 | 1                 | 195                 | 200               |
| Other States.....    | 265               | 270               | 51                           | 51                | 49                     | 44                | 2                                 | 2                 | 265                 | 275               |
| United States.....   | 11,074            | 11,224            | 2,103                        | 2,112             | 1,884                  | 2,004             | 59                                | 53                | 11,234              | 11,279            |

### Cattle on Feed: Number Placed on Feed by Weight Group, 1,000+ Capacity Feedlots<sup>1</sup>

| State              | During August 2021 |                   |                   |                   |                       |                   |
|--------------------|--------------------|-------------------|-------------------|-------------------|-----------------------|-------------------|
|                    | Under 600 lbs      | 600-699 lbs       | 700-799 lbs       | 800-899 lbs       | 900+ lbs <sup>2</sup> | Total             |
|                    | <i>1,000 head</i>  | <i>1,000 head</i> | <i>1,000 head</i> | <i>1,000 head</i> | <i>1,000 head</i>     | <i>1,000 head</i> |
| Colorado.....      | 35                 | 35                | 45                | 60                | 45                    | 220               |
| Kansas.....        | 65                 | 90                | 165               | 140               | 70                    | 530               |
| Nebraska.....      | 45                 | 50                | 115               | 175               | 170                   | 555               |
| <b>Texas.....</b>  | <b>160</b>         | <b>100</b>        | <b>80</b>         | <b>45</b>         | <b>10</b>             | <b>395</b>        |
| Other States.....  | 100                | 40                | 75                | 108               | 80                    | 403               |
| United States..... | 405                | 315               | 480               | 528               | 375                   | 2,103             |

| State              | During August 2022 |                   |                   |                   |                       |                   |
|--------------------|--------------------|-------------------|-------------------|-------------------|-----------------------|-------------------|
|                    | Under 600 lbs      | 600-699 lbs       | 700-799 lbs       | 800-899 lbs       | 900+ lbs <sup>2</sup> | Total             |
|                    | <i>1,000 head</i>  | <i>1,000 head</i> | <i>1,000 head</i> | <i>1,000 head</i> | <i>1,000 head</i>     | <i>1,000 head</i> |
| Colorado.....      | 30                 | 30                | 35                | 50                | 35                    | 180               |
| Kansas.....        | 65                 | 100               | 170               | 135               | 65                    | 535               |
| Nebraska.....      | 45                 | 50                | 110               | 190               | 175                   | 570               |
| <b>Texas.....</b>  | <b>190</b>         | <b>100</b>        | <b>80</b>         | <b>50</b>         | <b>10</b>             | <b>430</b>        |
| Other States.....  | 100                | 40                | 70                | 107               | 80                    | 397               |
| United States..... | 430                | 320               | 465               | 532               | 365                   | 2,112             |

<sup>1</sup> Oklahoma is included in *Other States*.

<sup>2</sup> For the U.S., the 900+ category represents the sum of 900-999 pound and 1,000+ pound weight groups.