

North Carolina Crop Progress & Condition Report

Released: September 16, 2024



CROP SUMMARY FOR THE WEEK ENDING SEPTEMBER 15, 2024

Crop information in this report is provided voluntarily by county officials of the Cooperative Extension Service, FSA, NRCS, and other knowledgeable individuals.

DAYS SUITABLE FOR FIELD WORK

This Week	Last Week	Last Year
5.9	6.5	5.8

SOIL MOISTURE PERCENT

	VS	ST	A	SS
Subsoil Moisture	1	8	87	4
Topsoil Moisture	2	28	64	6

VS= Very Short ST = Short A = Adequate SS = Surplus

CROP PROGRESS PERCENT – WITH COMPARISONS

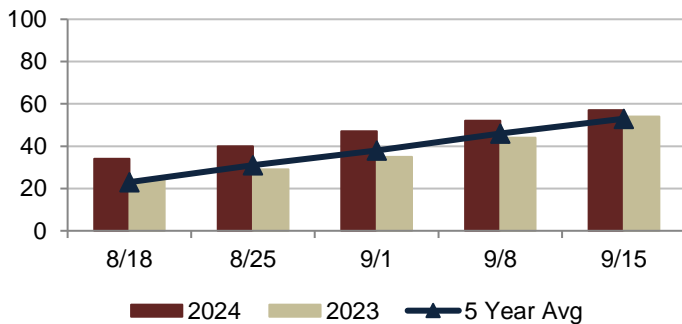
	This Week	Last Week	Last Year	5Yr Avg
PHENOLOGICAL:				
Corn Mature	86	83	91	91
Cotton Bolls Opening	45	35	40	49
Soybeans Dropping Leaves	27	19	38	31
HARVESTED:				
Apples	57	52	54	53
Corn for Grain	47	33	60	59
Corn for Silage	85	75	80	80
Hay: Second Cutting	96	92	96	96
Hay: Third Cutting	48	43	61	53
Peaches	90	87	96	94
Sorghum	11	n/a	24	23
Sweet Potatoes	12	n/a	17	15
Tobacco Burley	26	21	46	37
Tobacco Flue-Cured	73	63	80	74

CROP CONDITION PERCENT

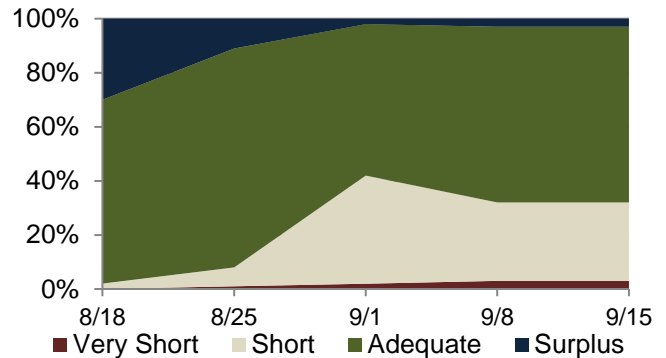
	VP	P	F	G	EX
Corn	52	25	11	12	0
Cotton	2	3	21	63	11
Hay	1	7	48	41	3
Pasture	1	13	40	44	2
Peanuts	2	5	12	67	14
Sorghum	9	29	35	19	8
Soybeans	4	18	32	41	5
Sweet Potatoes	1	14	45	33	7
Tobacco Burley	0	0	35	65	0

VP = Very Poor P = Poor F = Fair G = Good EX = Excellent

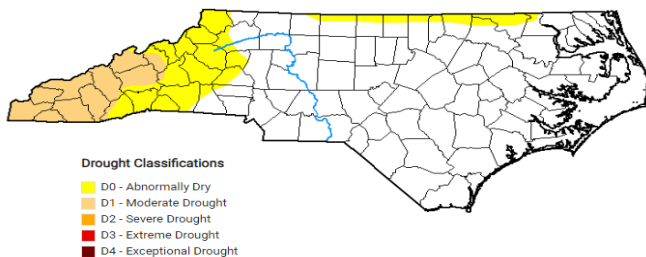
APPLES HARVESTED



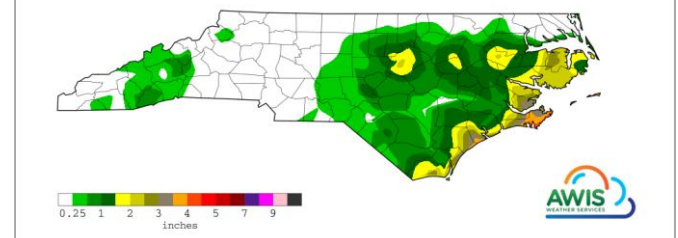
TOPSOIL MOISTURE PERCENT



Map depicts current drought conditions as of September 10, 2024.



Precipitation for 09/09/2024 to 09/15/2024



The US Drought Monitor focuses on broad scale conditions. Information provided for North Carolina is relative to information provided from all other states and the North Carolina Drought Management Advisory Council. Local conditions may vary. <http://www.ncdrought.org/>

Map depicts accumulations through dates listed. This product is made possible by AWIS Weather Services, Inc. <http://www.awis.com/>

WEATHER SUMMARY FOR THE WEEK ENDING SEPTEMBER 15, 2024 ¹

Location	Precipitation (Inches)				Temperature (Degrees F.)				
	This Week		Year to Date		This Week				
	Total	Departure from Normal	Total	Departure from Normal	High	Low	Avg.	Departure from Normal	Degree Days (YTD)
Asheboro	0.3	-0.54	38.1	3.58	81	52	67	-4	3936
Asheville_Munic	0.29	-0.61	41.76	6.7	79	49	65	-1	3521
Boone	0.36	-0.56	37.48	-1.68	75	42	60	-1	2546
Burlington AP	0.39	-0.45	43.26	9.7	83	49	67	-4	3973
Charlotte	0	-0.91	36.5	4.97	86	56	72	-1	4554
Clayton WTP	0.86	-0.02	37.89	3.91	82	52	69	-3	4240
Clinton_2NE	0.21	-0.77	39.49	-0.61	84	54	71	-3	4301
Elizabeth City 1.8 SE	0	-1.26	42.44	6.54	83	52	71	-3	4204
Elizabethtown_NC	0.8	-0.09	38.04	1.65	82	54	70	-3	4677
Erwin_AP	0.73	-0.18	37.75	1.63	82	54	70	-2	4352
Fayetteville_AP	0.51	-0.52	36.21	0.36	84	54	71	-3	4737
Frisco	4.91	3.58	39.31	-1.11	85	63	73	-2	4365
Gastonia-Gaston	0.19	-0.72	38.52	4.33	83	54	70	-2	4161
Goldsboro_AFB	0.81	-0.51	38.38	0.45	84	54	70	-4	4728
Greensboro_AP	0.1	-0.95	44.04	12.18	83	54	68	-2	3995
Greenville Airport	1.06	0.05	35.97	-2.22	82	52	69	-5	4430
Hickory	0	-1.04	38.94	2.7	83	53	69	-1	3983
Jacksonville_AP	0.96	-0.6	42.79	1.75	84	53	70	-4	4488
Jacksonville_EOC	0.96	-0.26	45.65	2.37	84	53	70	-4	4463
Jefferson_2E	0.1	-0.88	43.16	8.18	81	39	60	-3	2525
Kinston Airport	1.26	-0.13	38.49	0.92	84	52	69	-6	4472
Louisburg	1.2	0.34	50.38	16.44	83	46	66	-4	3877
Mt_Airy_2W	0.06	-0.92	37.97	4.73	82	45	64	-3	3420
New_Bern	0.82	-0.51	45.16	3.22	84	52	71	-4	4618
North_Wilkesboro	0.07	-0.91	38.7	1.86	82	50	66	-2	3733
Oxford_NC	0.29	-0.48	38.27	5.51	79	50	65	-5	3470
Raleigh	1.88	0.83	41.32	9.41	85	55	71	-1	4664
Red Springs 3.8 NW	0.62	-0.36	34.18	-2.94	84	51	70	-3	4454
Reidsville_2NW	0.04	-0.73	35.7	3.25	82	52	68	-2	3969
Roanoke_Rap_Dam	0	-0.84	33.76	-0.31	84	53	70	-2	4070
Robbinsville_AG	0.11	-0.86	37.18	-9.25	84	46	67	-1	3419
Rockingham	0.35	-0.49	37.23	0.95	83	53	70	-2	4487
Roxboro Airport	0.31	-0.51	37.54	5.04	79	46	64	-4	3404
Southern_Pines	0.49	-0.35	32.14	-2.76	82	52	69	-4	4403
Statesville_2NNE	0.04	-0.87	39.82	6.32	82	50	67	-3	3697
Tarboro_1S	0.73	-0.23	37.17	2.13	83	54	70	-2	4235
Vale_Ag_2SW	0	-0.84	45.72	11.27	82	51	67	-3	3817
Wadesboro_AP	0.25	-0.63	38.23	2.59	83	53	70	-4	4261
Washington	1.28	0.16	36.13	-3.13	82	54	69	-5	4396
Waynesville_1E	0.28	-0.54	33.2	-1.84	79	46	64	0	2845
Whiteville_7NW	0.75	-0.3	38.07	0.02	82	54	70	-4	4647
Williamston_1E	0.03	-1	35.42	-1.53	83	54	69	-3	4393
Wilmington_AP_NC	1.62	-0.08	42.81	-1.16	84	56	72	-4	4862
Winston-Salem	0.02	-1.03	34.38	2.52	83	53	69	-1	4184

¹ This data is made possible by AWIS Weather Services, Inc. <http://www.awis.com/> ...