



**Weather Advisory for New Jersey  
And Southeastern Pennsylvania**

**Issued by Rutgers University  
New Brunswick, NJ  
8 am EDT Tuesday September 2, 2008**

Rainfall amounts none through Wednesday. Winds for spraying north near 10 mph today, light northwest tonight, north then south 5 to 10 mph Wednesday.

Relative humidity in percent 30 to 40 today, 90 to 100 tonight, 35 to 45 Wednesday. Low 60s dew points 55 to 60 today and tonight, 60 to 65 Wednesday. Drying conditions very good today and good Wednesday. Moderate dew tonight and Wednesday night. Percent of possible sunshine 90 today, 90 Wednesday.

There is a near zero percent probability of precipitation during the 12 hour period beginning at 8 am and ending at 8 pm that could adversely affect the performance of pesticides that require a rain free period after application.

Conditions should be unfavorable for cranberry scald today and Wednesday.

Hay cutting will see good conditions through Thursday then with an increasing threat of showers on Friday and especially Saturday.

Soil moisture remains short in most locations and very short in the south. No precipitation is expected before Friday and therefore the need for irrigation will remain high.

The latest 8 to 14 day outlook for the period September 9, 2008 to September 15, 2008 is calling for temperatures to average near normal and precipitation to total near normal.

**Climate summary for the week ending 8am 9/1/08**

Temperatures averaged above normal, averaging 69 degrees north, 71 degrees central, and 72 degrees south. Extremes were 91 degrees at Pomona on August 26, 2008, and 49 degrees at Charlotteburg, Flemington, and Downtown on August 28, 2008.

Weekly rainfall averaged 0.29 inches north, 0.22 inches central, and 0.03 inches south. The heaviest 24 hour total reported was 0.59 inches at Canoe Brook and New Brunswick on August 29, 2008 to August 30, 2008.

Estimated soil moisture, in percent of field capacity, this past week averaged 72 percent north, 59 percent central, and 48 percent south.

Four inch soil temperatures averaged 68 degrees north, 69 degrees central, and 71 degrees south.

**Fall Vegetable Planting Continues**

Days suitable for field work, for the week ending Sunday, August 31, 2008, were 7.0. Topsoil moisture was rated as 5% very short, 55% short and 40% adequate. Subsoil moisture was rated as 5% very short, 40% short and 55% adequate. There were measurable amounts of rainfall for the week in some localities. Temperatures were above normal during the week across the Garden State. Crops affected by heat stress included peppers, sweet corn, squash, and tomatoes as dry conditions persisted. Alfalfa and other hay varieties were also affected by lack of moisture in some localities. Producers continued planting fall vegetables and harvesting summer crops. In the central district, soybeans were sprayed for spider mites. Pumpkins continued coloring nicely. Early apple harvesting continued in north Jersey. Producers continued irrigating, planting, and harvesting some fall vegetables.

**Weather Summary for the Week Ending Monday, September 2, 2008**

Weather Stations	Rainfall			Temperatures Last Week				Growing Degree Days <sup>1</sup>		Soil Moisture <sup>2</sup>
	Last Week	Since March 1		Max.	Min.	Avg.	Dept.*	Total	Dept.*	
	Inches	Total	Dept.*							Inches
<b>North</b>										
Belvidere Bridge	0.16	19.19	-5.35	89	53	70	3	2,401	195	58
Canoe Brook	0.59	20.12	-5.59	88	50	70	2	2,364	140	76
Charlotteburg	0.07	24.39	-1.58	81	49	67	2	2,225	459	64
Flemington	0.54	19.04	-5.70	86	49	68	0	2,338	57	78
Newton	0.07	20.23	-3.77	83	50	69	4	2,503	490	66
<b>Central</b>										
Freehold <sup>3</sup>	0.00	N/A	N/A	89	51	70	1	N/A	N/A	62
Long Branch	0.03	17.64	-6.85	85	58	71	2	2,358	7	40
New Brunswick	0.59	24.87	0.48	87	53	70	-2	2,671	136	79
Toms River	0.03	19.77	-5.24	88	52	70	0	2,596	260	39
Trenton	0.46	20.97	-2.16	86	55	73	2	2,785	149	56
<b>South</b>										
Cape May C.H.	0.00	15.17	-6.44	89	53	72	0	2,744	418	38
Downtown	0.00	18.97	-3.89	88	49	72	1	2,774	133	41
Glassboro	0.03	18.18	-5.64	89	56	73	2	2,782	163	40
Hammonton	0.00	17.20	-6.62	88	52	72	1	2,892	269	35
Pomona	0.11	20.02	-1.97	91	51	73	4	2,871	426	39
Seabrook	0.01	17.21	-4.63	86	56	72	1	2,959	303	40
South Harrison	0.00	20.24	-3.24	87	55	73	NA	2,764	NA	NA

\* Departure from normal.

<sup>1</sup> Growing degree days since March 1, 2008, total and departure from normal or long term average.

<sup>2</sup> Estimated soil moisture as % of field capacity based on climate data.

<sup>3</sup> Data not available.

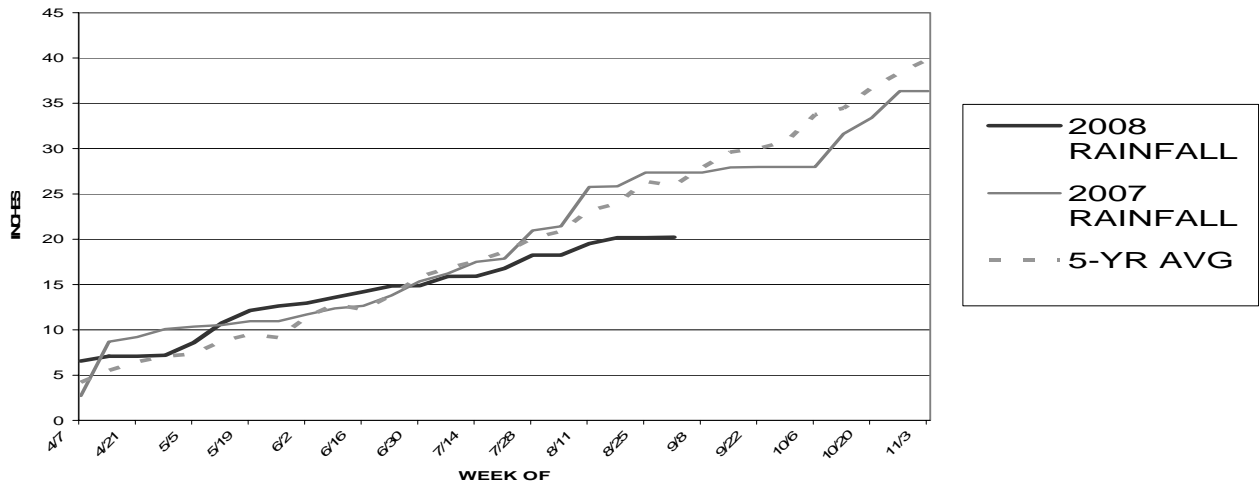
**JERSEY FRESH AVAILABILITY FOR SEPTEMBER 2, 2008**

<b>ARUGULA &amp; CILANTRO</b>	A fair volume and fair to good quality of products.
<b>BABY SPINACH &amp; BABY ARUGULA</b>	Harvesting in good quality and quantity. Not as affected by the heat.
<b>BASIL &amp; MINT</b>	Harvesting fair to good quality product in fair volume. Likes the heat.
<b>BEETS</b>	Harvesting fair to good quality and quantity.
<b>CABBAGE</b>	Harvesting good quality product in good volume.
<b>CANTALOUPE/MELONS</b>	Finishing up.
<b>COLLARDS</b>	Harvesting good quality in good volume.
<b>CUCUMBERS/PICKLES</b>	Harvesting a light quantity of fair to good quality product. Expect less product to be available than normal due to Aug. hail damage.
<b>DANDELION</b>	Good quality Spring planted San Pasquale variety available.
<b>DILL &amp; KALE</b>	Harvesting very good quality in good volume.
<b>EGGPLANT</b>	Harvesting fair to good quality and volume.
<b>LEEKS &amp; GR. ONIONS</b>	A good volume of good quality product is available.
<b>NECTARINES</b>	Finishing up with a light volume of good quality Fantasia variety.
<b>PARSLEY</b>	Fair to good quality product available in light to fair quantities.
<b>PEACHES</b>	Harvesting good quantities of yellow & white peaches, & will continue to do so into late Sept. Yellow Cresthaven & Flamin Fury finishing up while Jerseyglo, Jerseyqueen, & Fayette varieties are harvesting. Encore, our most heavily planted yellow peach variety, along with the Lauro variety, will harvest next & finish up our season. Blushing Star & Sugar Giant white varieties are finishing with Lady Nancy harvesting in volume w/ Snow Giant starting.
<b>PEPPERS</b>	Harvesting fair to good quality in light volume. Expect less product to be available than normal due to Aug. hail damage. Some growers have stripped damaged plants, hoping for a Fall harvest.
<b>RADISHES &amp; TURNIPS</b>	Temperature sensitive, a light to increasing quantity of good quality is available with the cooling weather.
<b>SQUASH</b>	Harvesting light to fair quantities of fair to good quality Yellow & Zucchini. Expect less product to be available than normal due to Aug. hail damage although some growers re-planted for Fall harvest.
<b>SWEET CORN</b>	Harvesting good quality and fair to decreasing quantity as Fall insect pressures increase and cooler overnight temperatures slow ripening.
<b>SWISS CHARD</b>	A light to increasing volume of good quality product available.
<b>TOMATOES</b>	Harvesting fair to good quality and light to fair volume. Expect less product to be available than normal due to Aug. hail damage.
<b>WHITE POTATOES</b>	Harvesting mainly round white varieties, with some Yukon Gold and Redskin varieties as well. Source your N.J. white potatoes in their distinctive "Jersey Fresh" bags.

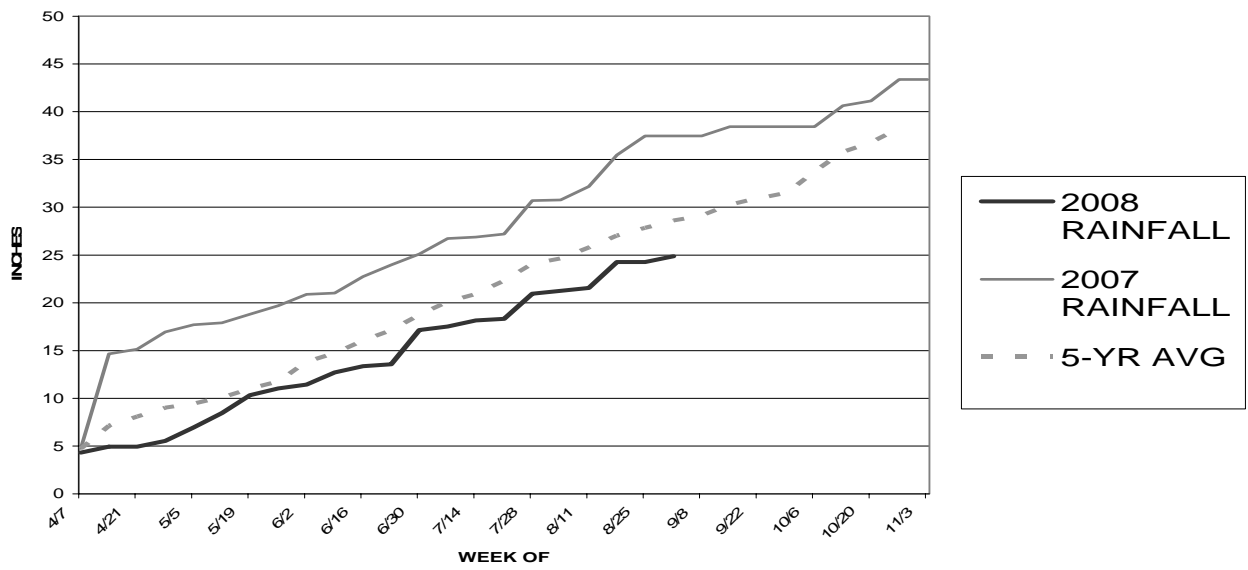
**JERSEY FRESH FORECAST**

<b>ESCAROLE &amp; ENDIVE</b>	Will be harvested in volume around the third week of September.
<b>LETTUCES</b>	Will be harvested in volume around the third week of September.
<b>SPINACH</b>	Will be harvested in volume around the third week of September.
<b>SWEET POTATOES</b>	Should begin harvesting in mid-September.

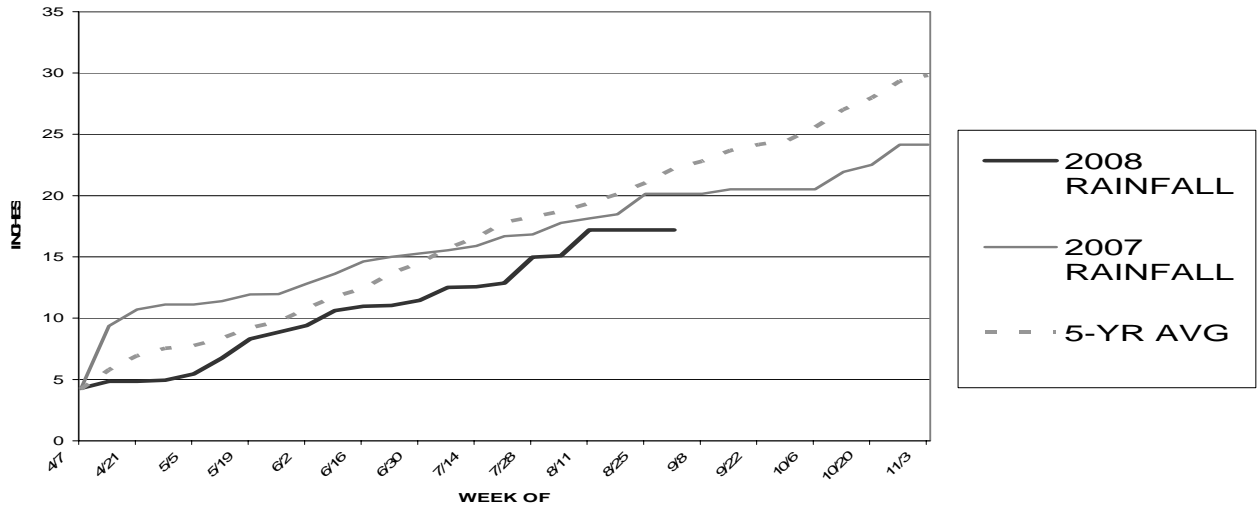
**2008 TOTAL RAINFALL (NEWTON)**



**2008 TOTAL RAINFALL (NEW BRUNSWICK)**



**2008 TOTAL RAINFALL (HAMMONTON)**



Source: [http://www.envsci.rutgers.edu/fcst/NJ\\_AG.htm](http://www.envsci.rutgers.edu/fcst/NJ_AG.htm)