



**Weather Advisory for New Jersey
And Southeastern Pennsylvania
Issued by Rutgers University
New Brunswick, NJ
8 am EDT Monday August 25, 2008**

Rainfall amounts tenth of an inch with some locally higher amounts possible today, none expected tonight and Tuesday. Winds for spraying southwest 5 to 10 mph today, north 5 to 10 mph tonight, northeast 5 to 10 mph Tuesday. Relative humidity in percent 45 to 55 today, 90 to 100 tonight, 30 to 40 Tuesday. Dew points mid 60s today then dropping through the 50s tonight and into the upper 40s by late Tuesday. Drying conditions fair but with some poor areas later today, very good Tuesday. Moderate dew tonight, heavy dew Tuesday night. Percent of possible sunshine 30 today, 90 Tuesday.

There is a 30 percent probability of precipitation during the 12 hour period beginning at 8 am and ending at 8 pm that could adversely affect the performance of pesticides that require a rain free period after application. Conditions will be unfavorable for cranberry scald today but might be favorable on Tuesday.

Hay cutting runs a slight risk of wetting today but then good drying conditions for Tuesday through Thursday with the next threat of showers Thursday night.

Soil moisture has become short in most locations with little or no precipitation for the past week. Only minor amounts of rain are expected for today and therefore the need for irrigation will only increase over the next few days.

The latest 8 to 14 day outlook for the period September 1, 2008 to September 7, 2008 is calling for temperatures to average above normal and precipitation to total below normal.

Climate summary for the week ending 8am 8/25/08

Temperatures averaged near normal, averaging 70 degrees north, 70 degrees central, and 72 degrees south. Extremes were 92 degrees at Pomona on August 20, 2008, and 48 degrees at Charlotteburg on August 21, 2008.

Weekly rainfall averaged 0.00 inches north, 0.00 inches central, and 0.00 inches south. The heaviest 24 hour total reported was 0.01 inches at Canoe Brook on August 22, 2008 to August 23, 2008.

Estimated soil moisture, in percent of field capacity, this past week averaged 77 percent north, 69 percent central, and 46 percent south.

Four inch soil temperatures averaged 69 degrees north, 70 degrees central, and 72 degrees south.

Apple Harvesting Continues

Days suitable for field work, for the week ending Sunday, August 24, 2008, were 7.0. Topsoil moisture was rated as 5% very short, 40% short and 55% adequate. Subsoil moisture was rated as 40% short and 60% adequate. There were no measurable amounts of rainfall for the week. Temperatures were normal during the week across the Garden State. Producers continued irrigating heavily as dry conditions persisted. Field corn was under moisture stress in the central district. Hay conditions were fair as second and third cuttings continued throughout New Jersey. Pumpkins were doing well and coloring nicely. Early apple harvesting began in some localities. Other activities included planting fall vegetables, pest management, and harvesting vegetables, fruit, and hay.

Weather Summary for the Week Ending Monday, August 25, 2008

Weather Stations	Rainfall			Temperatures Last Week				Growing Degree Days ¹		Soil Moisture ²
	Last Week	Since March 1		Max.	Min.	Avg.	Dept.*	Total	Dept.*	
	Inches	Total	Dept.*					Base 50°F	Base 50°F	Percent
North										
Belvidere Bridge	0.00	19.03	-4.44	88	52	71	2	2,259	176	62
Canoe Brook	0.01	19.53	-5.08	91	49	71	2	2,225	130	72
Charlotteburg	0.00	24.32	-0.53	84	48	67	1	2,104	445	72
Flemington	0.00	18.50	-5.22	89	49	71	1	2,208	59	71
Newton	0.00	20.16	-2.78	86	49	69	2	2,370	468	68
Central										
Freehold	0.00	NA	NA	89	53	70	-1	NA	NA	NA
Long Branch	0.00	17.61	-5.77	88	55	70	-1	2,210	0	54
New Brunswick	0.00	24.28	0.97	90	53	70	-2	2,529	148	79
Toms River	0.00	19.74	-4.18	88	52	69	-2	2,451	259	50
Trenton	0.00	20.51	-1.64	89	54	72	0	2,625	139	42
South										
Cape May C.H.	0.00	15.17	-5.48	91	54	71	-2	2,586	418	37
Downtown	0.00	18.97	-2.88	89	50	71	-1	2,620	159	40
Glassboro	0.00	18.15	-4.66	89	58	74	2	2,621	152	37
Hammonton	0.00	17.20	-5.62	90	51	71	-1	2,733	260	34
Pomona	0.00	19.91	-1.13	92	53	71	0	2,709	403	35
Seabrook	0.00	17.20	-3.72	91	56	73	1	2,802	297	39
South Harrison	0.00	20.24	-2.34	88	56	73	NA	2,603	NA	NA

* Departure from normal.

¹ Growing degree days since March 1, 2008, total and departure from normal or long term average.

² Estimated soil moisture as % of field capacity based on climate data.

³ Data not available.

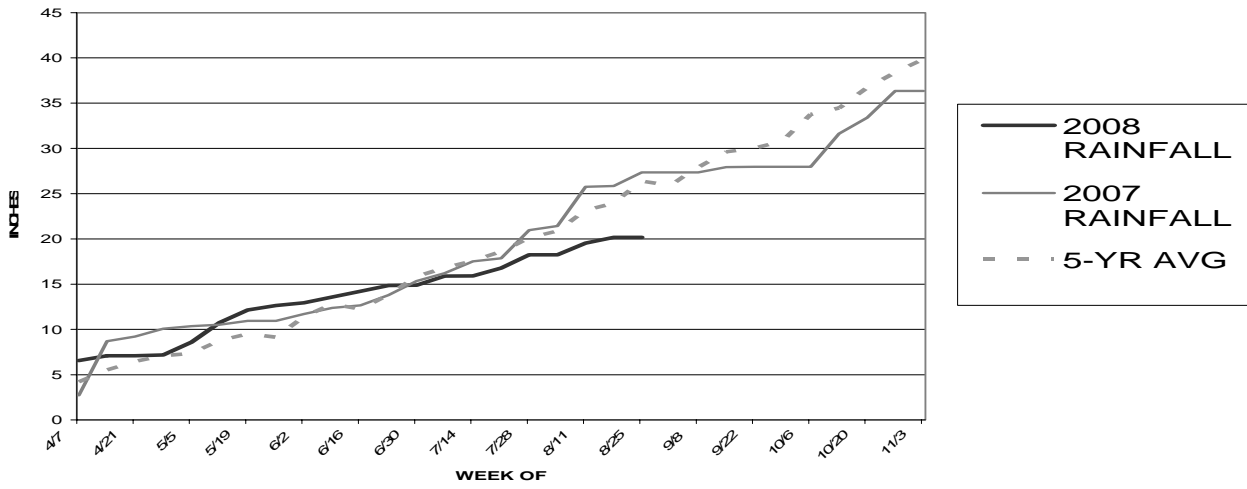
JERSEY FRESH AVAILABILITY FOR AUGUST 25, 2008

ARUGULA & CILANTRO	A fair volume and fair to good quality of products.
BABY SPINACH & BABY ARUGULA	Harvesting in good quality and quantity. Not as affected by the heat.
BASIL & MINT	Harvesting fair to good quality product in fair volume. Likes the heat.
BEETS	Harvesting fair to good quality and quantity.
CABBAGE	Harvesting good quality product in good volume.
CANTALOUPE & MELONS	Harvesting in light volume and fair quality due to hail effects of several weeks ago. Will finish up by Labor Day.
COLLARDS	Harvesting good quality in good volume.
CUCUMBERS/PICKLES	Harvesting a light quantity of fair to good quality product. Recent hail also hurt Fall plantings and it's too late to re-plant. Expect 30% less Fall product to be available.
DANDELION	Good quality Spring planted San Pasquale variety available.
DILL & KALE	Harvesting very good quality in good volume.
EGGPLANT	Harvesting fair to good quality and volume.
LEEK & GR. ONIONS	A good volume of good quality product is available.
NECTARINES	A fair to decreasing volume of good quality Fantasia variety fruit will be available for another week or so. Finishing up.
PARSLEY	Fair to good quality product available in light to fair quantities.
PEACHES	Harvesting good quantities of yellow and white peaches, and will continue to do so into late Sept. Yellow Cresthaven, Flamin Fury, & Jerseyqueen varieties are harvesting. Blushing Star & Sugar Giant white varieties are slowing down with Lady Nancy harvesting in volume. Snow Giant will be starting next week.
PEPPERS	Harvesting fair to good quality in light volume due to hail on Aug. 10. Supplies off 35% in South Jersey. Some growers have stripped damaged plants, hoping for a Fall harvest.
RADISHES & TURNIPS	Temperature sensitive, a light quantity of good quality is available. Volume should increase in several weeks with the cooler weather.
SQUASH	Harvesting light to fair quantities of fair to good quality Yellow & Zucchini due to hail on Aug. 10th. Supplies off 30% in South Jersey. Some growers re-planted for a Fall harvest.
SWEET CORN	Harvesting good quality but light quantity due to a supply gap. Cool overnight temperatures have slowed ripening. Supply better next week.
SWISS CHARD	A light to decreasing volume of good quality product available.
TOMATOES	Harvesting fair to good quality and light to fair volume due to hail. Supplies off 35% in South Jersey.
WHITE POTATOES	Harvesting mainly round white varieties, with some Yukon Gold and Redskin varieties as well. Source your N.J. white potatoes in their distinctive "Jersey Fresh" bags.

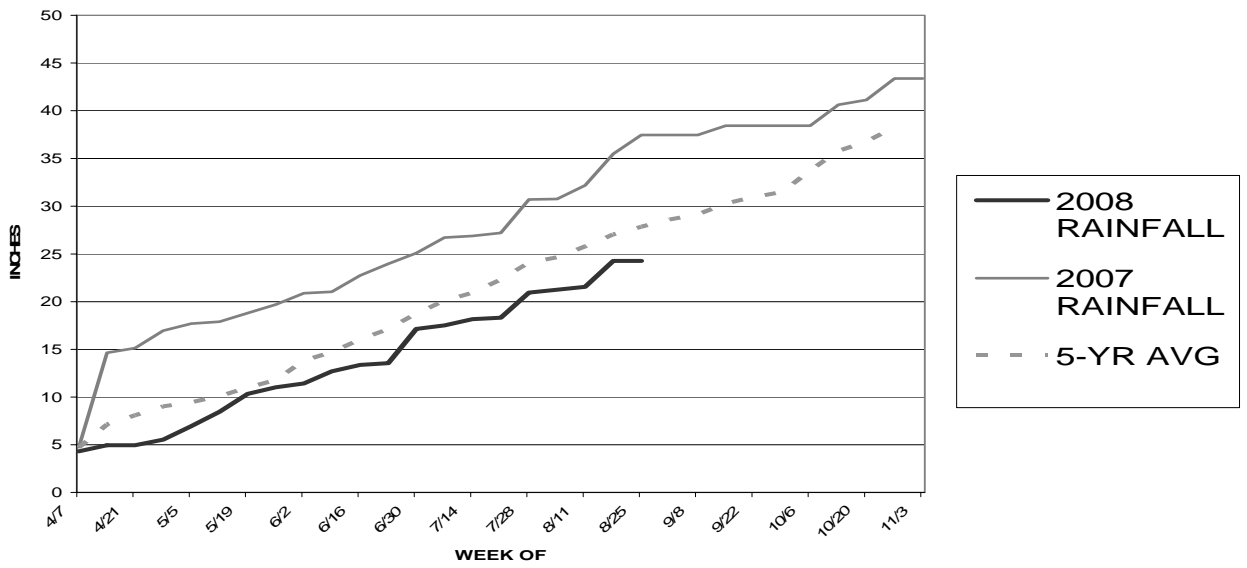
JERSEY FRESH FORECAST

ESCAROLE & ENDIVE	Will be harvested in volume around the third week of September.
LETTUCES	Will be harvested in volume around the third week of September.
SPINACH	Will be harvested in volume around the third week of September.
SWEET POTATOES	Should begin harvesting in mid-September.

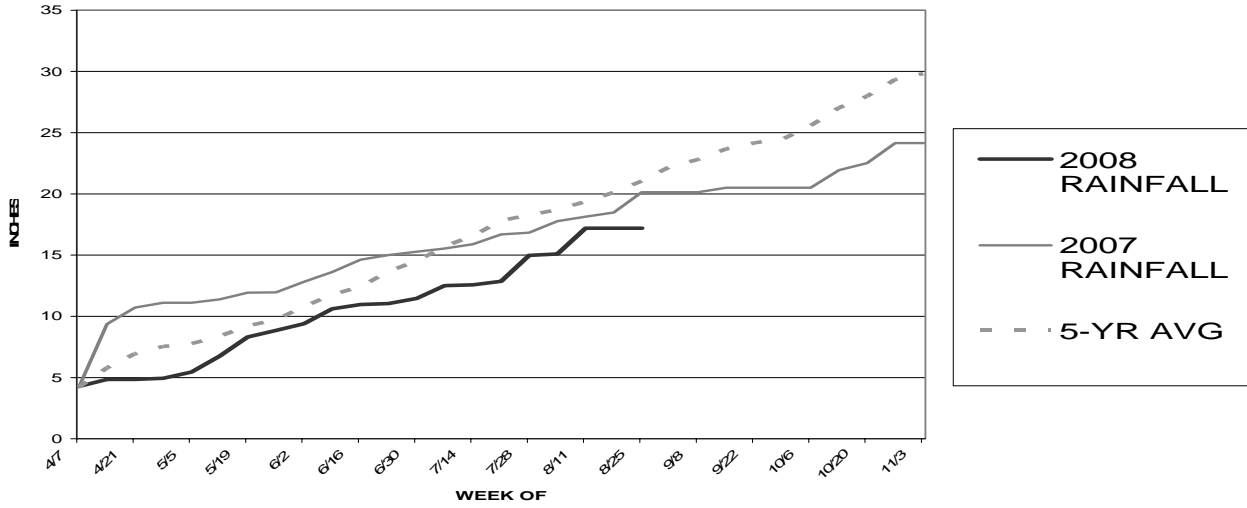
2008 TOTAL RAINFALL (NEWTON)



2008 TOTAL RAINFALL (NEW BRUNSWICK)



2008 TOTAL RAINFALL (HAMMONTON)



Source: http://www.envsci.rutgers.edu/fcst/NJ_AG.htm