



Nevada Crop Progress & Condition

Pacific Regional Office · 650 Capitol Mall, Suite 6-100 · Sacramento, CA 95814 · (916) 738-6600 · www.nass.usda.gov/nv

Week Ending October 20, 2024

Released October 21, 2024

Weather Summary

Temperature and precipitation information for Nevada are not available this week.

Crops Summary

Days Suitable for Fieldwork: 5.6 days. Topsoil Moisture: 10% very short, 20% short, 50% adequate, and 20% surplus. Subsoil Moisture: 5% very short, 35% short, 55% adequate, and 5% surplus. Pasture and Range Condition: 25% very poor, 10% poor, 20% fair, 25% good, and 20% excellent. Multiple storms across the state brought precipitation and cooling temperatures, with overnight temperatures down near freezing. **Corn** silage harvest continued. Fourth crop of **hay** was cut.

Weather for the Week of 10/14/2024 through 10/20/2024

Station	Temperature				Precipitation ²
	High	Low	Average	Departure from Normal ¹	
	-- Degrees Fahrenheit --				
Reno	NA	NA	NA	NA	NA
Elko	NA	NA	NA	NA	NA
Ely	NA	NA	NA	NA	NA
Winnemucca	NA	NA	NA	NA	NA
Eureka	NA	NA	NA	NA	NA
Tonopah	NA	NA	NA	NA	NA
Las Vegas	NA	NA	NA	NA	NA

¹ Normal periods 1990-2020 used in departure from normal calculations.

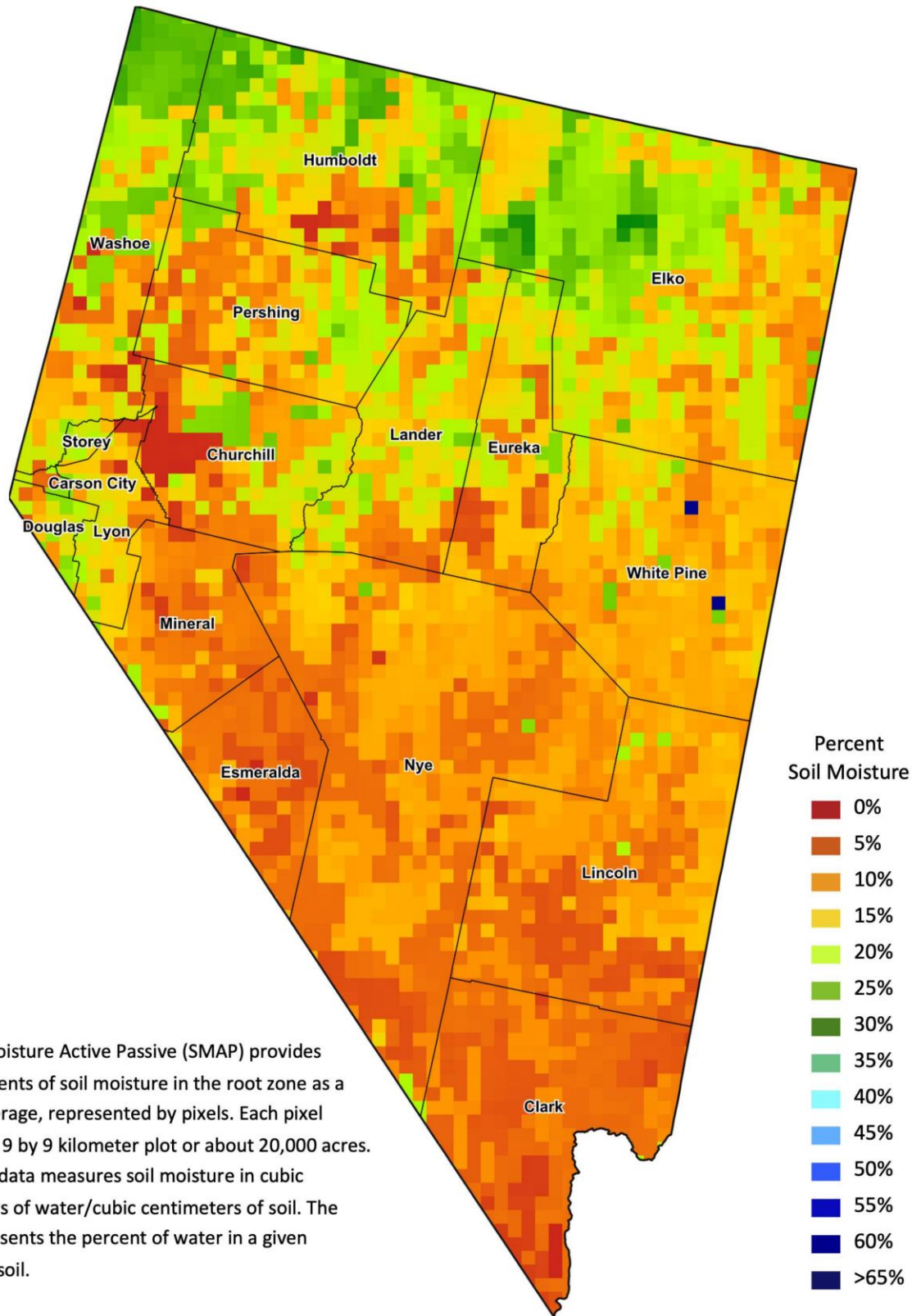
² Rain or melted snow/ice.

Data retrieved from NOAA and NWS. Calculated by USDA NASS. All rights reserved.

Drought Conditions from the U.S. Drought Monitor as of 10/15/2024

Time	Percent of Land in Drought Rating						Drought Severity (DSCI)
	None	D0	D1	D2	D3	D4	
Current	0.00	67.46	19.23	13.31	0.00	0.00	146
Last Week	0.00	67.40	19.29	13.31	0.00	0.00	146
3 Months Ago	43.39	56.08	0.53	0.00	0.00	0.00	57
One Year Ago	94.27	4.12	1.60	0.00	0.00	0.00	7

The U.S. Drought Monitor is jointly produced by the National Drought Mitigation Center at the University of Nebraska-Lincoln, the United States Department of Agriculture, and the National Oceanic and Atmospheric Administration.
droughtmonitor.unl.edu/CurrentMap/StateDroughtMonitor.aspx?NV



The Soil Moisture Active Passive (SMAP) provides measurements of soil moisture in the root zone as a weekly average, represented by pixels. Each pixel represents 9 by 9 kilometer plot or about 20,000 acres. The SMAP data measures soil moisture in cubic centimeters of water/cubic centimeters of soil. The scale represents the percent of water in a given volume of soil.