



# Nevada Crop Progress & Condition

Pacific Regional Office · 650 Capitol Mall, Suite 6-100 · Sacramento, CA 95814 · (916) 738-6600 · [www.nass.usda.gov/nv](http://www.nass.usda.gov/nv)

Week Ending August 11, 2024

Released August 12, 2024

## Weather Summary

The average low temperatures for Nevada ranged from 52 in Ely and Winnemucca to 86 degrees in Las Vegas. The average high temperatures ranged from 95 degrees in Ely to 114 degrees in Las Vegas. No precipitation was observed at any of the reporting stations in Nevada.

## Crops Summary

Days Suitable for Fieldwork: 7.0 days. Topsoil Moisture: 40% very short, 15% short, 35% adequate, and 10% surplus. Subsoil Moisture: 25% very short, 35% short, 35% adequate, and 5% surplus. Pasture and Range Condition: 30% very poor, 10% poor, 15% fair, 25% good, and 20% excellent. **Corn** tasseling continued. Growers prepared for the third cutting of **alfalfa**. Daytime temperatures remained high across the state, and there was no precipitation recorded during the week.

## Weather for the Week of 8/5/2024 through 8/11/2024

Station	Temperature				Precipitation <sup>2</sup>
	High	Low	Average	Departure from Normal <sup>1</sup>	
	-- Degrees Fahrenheit --				
Reno	100	64	83	6	0.00
Elko	101	54	77	5	0.00
Ely	95	52	74	5	0.00
Winnemucca	99	52	76	2	0.00
Eureka	N/A	N/A	N/A	N/A	N/A
Tonopah	99	61	81	6	0.00
Las Vegas	114	86	99	6	0.00

<sup>1</sup> Normal periods 1990-2020 used in departure from normal calculations.

<sup>2</sup> Rain or melted snow/ice.

Data retrieved from NOAA and NWS. Calculated by USDA NASS. All rights reserved.

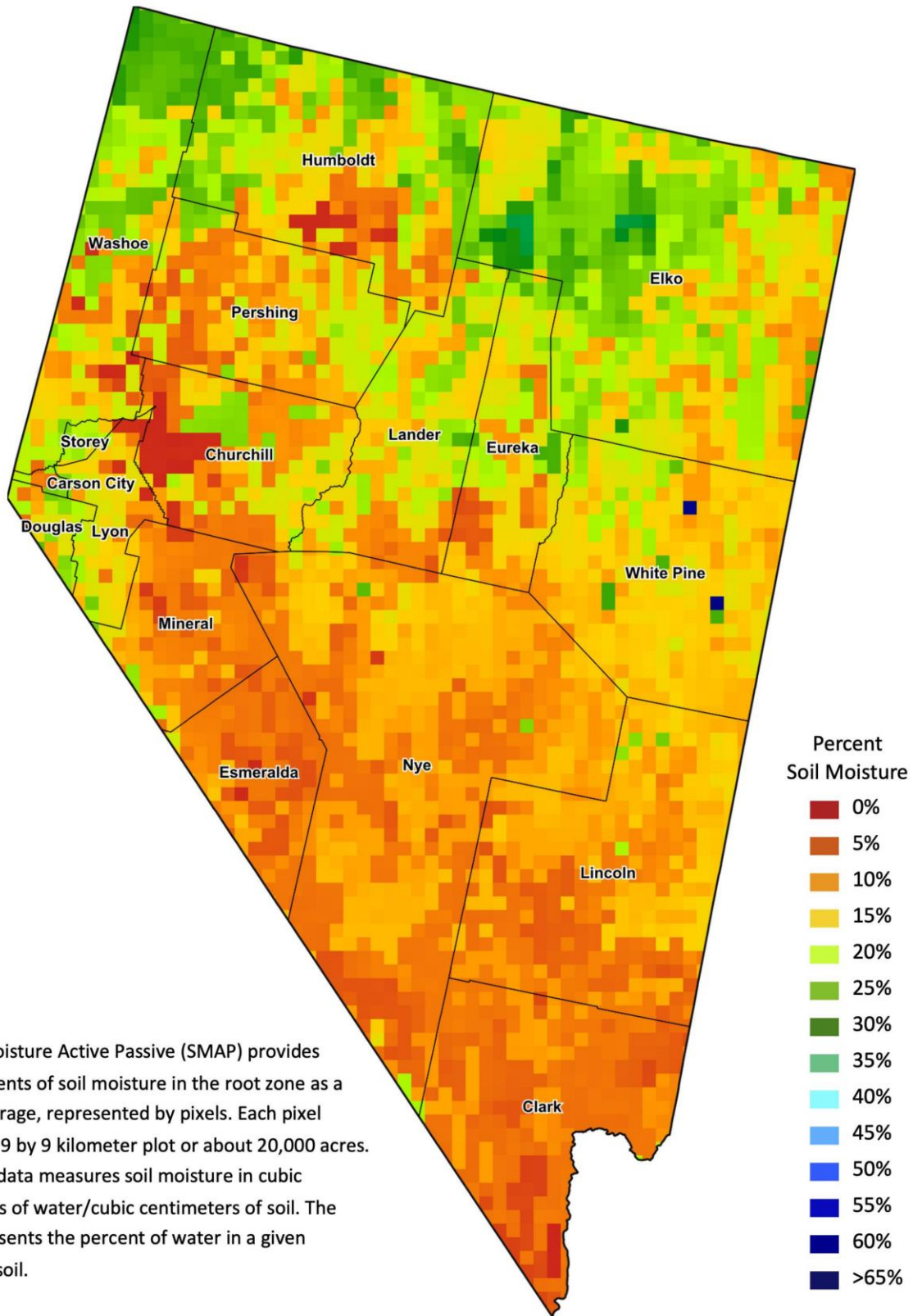
## Drought Conditions from the U.S. Drought Monitor as of 8/6/2024

Time	Percent of Land in Drought Rating						Drought Severity (DSCI)
	None	D0	D1	D2	D3	D4	
Current	30.49	66.34	3.17	0.00	0.00	0.00	73
Last Week	34.53	64.00	1.47	0.00	0.00	0.00	67
3 Months Ago	95.37	3.24	1.39	0.00	0.00	0.00	6
One Year Ago	78.06	7.80	14.14	0.00	0.00	0.00	36

The U.S. Drought Monitor is jointly produced by the National Drought Mitigation Center at the University of Nebraska-Lincoln, the United States Department of Agriculture, and the National Oceanic and Atmospheric Administration.  
[droughtmonitor.unl.edu/CurrentMap/StateDroughtMonitor.aspx?NV](http://droughtmonitor.unl.edu/CurrentMap/StateDroughtMonitor.aspx?NV)



# Nevada Soil Moisture Map for the Week of July 29 - August 4, 2024



The Soil Moisture Active Passive (SMAP) provides measurements of soil moisture in the root zone as a weekly average, represented by pixels. Each pixel represents 9 by 9 kilometer plot or about 20,000 acres. The SMAP data measures soil moisture in cubic centimeters of water/cubic centimeters of soil. The scale represents the percent of water in a given volume of soil.