



# Nevada Crop Progress & Condition

Pacific Regional Office · 650 Capitol Mall, Suite 6-100 · Sacramento, CA 95814 · (916) 738-6600 · [www.nass.usda.gov/nv](http://www.nass.usda.gov/nv)

Week Ending July 7, 2024

Released July 8, 2024

## Weather Summary

The average low temperatures for Nevada ranged from 39 degrees in Ely to 84 degrees in Las Vegas. The average high temperatures ranged from 88 degrees in Eureka to 113 degrees in Las Vegas. No precipitation was observed at any of the reporting stations in Nevada.

## Crops Summary

Days Suitable for Fieldwork: 7.0 days. Topsoil Moisture: 40% very short, 20% short, 30% adequate and 10% surplus. Subsoil Moisture: 15% very short, 45% short, 35% adequate and 5% surplus. Pasture and Range Condition: 15% very poor, 20% poor, 20% fair, 25% good, and 20% excellent. Weather was hot and dry with temperatures close to or above 100 degrees with no precipitation reported. The second cutting of **hay** began. **Corn** was growing well. Rangeland was very dry and a fire danger.

## Weather for the Week of 6/30/2024 through 7/7/2024

Station	Temperature				Precipitation <sup>2</sup>
	High	Low	Average	Departure from Normal <sup>1</sup>	
	-- Degrees Fahrenheit --				
Reno	102	61	81	6	0.00
Elko	95	45	69	0	0.00
Ely	92	39	66	-1	0.00
Winnemucca	96	46	70	-2	0.00
Eureka	88	46	67	0	0.00
Tonopah	99	57	79	5	0.00
Las Vegas	113	84	98	6	0.00

<sup>1</sup> Normal periods 1990-2020 used in departure from normal calculations.

<sup>2</sup> Rain or melted snow/ice.

Data retrieved from NOAA and NWS. Calculated by USDA NASS. All rights reserved.

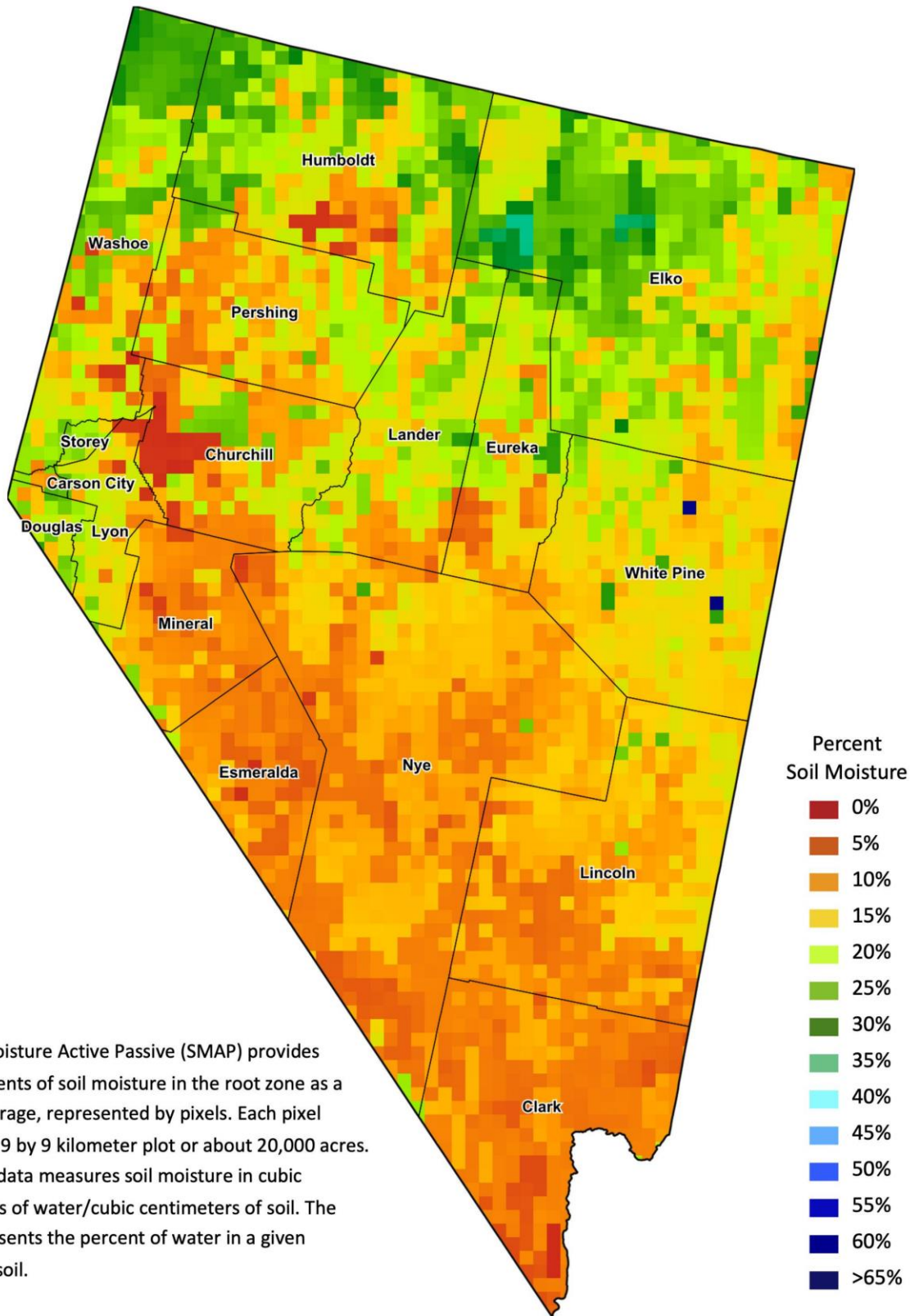
## Drought Conditions from the U.S. Drought Monitor as of 7/2/2024

Time	Percent of Land in Drought Rating						Drought Severity (DSCI)
	None	D0	D1	D2	D3	D4	
Current	84.39	15.61	0.00	0.00	0.00	0.00	16
Last Week	90.80	9.20	0.00	0.00	0.00	0.00	9
3 Months Ago	85.33	13.28	1.39	0.00	0.00	0.00	16
One Year Ago	65.75	15.76	15.72	2.78	0.00	0.00	56

The U.S. Drought Monitor is jointly produced by the National Drought Mitigation Center at the University of Nebraska-Lincoln, the United States Department of Agriculture, and the National Oceanic and Atmospheric Administration.  
[droughtmonitor.unl.edu/CurrentMap/StateDroughtMonitor.aspx?NV](http://droughtmonitor.unl.edu/CurrentMap/StateDroughtMonitor.aspx?NV)



# Nevada Soil Moisture Map for the Week of June 24 - 30, 2024



The Soil Moisture Active Passive (SMAP) provides measurements of soil moisture in the root zone as a weekly average, represented by pixels. Each pixel represents 9 by 9 kilometer plot or about 20,000 acres. The SMAP data measures soil moisture in cubic centimeters of water/cubic centimeters of soil. The scale represents the percent of water in a given volume of soil.