



# Nevada Crop Progress & Condition

Pacific Regional Office · 650 Capitol Mall, Suite 6-100 · Sacramento, CA 95814 · (916) 738-6600 · [www.nass.usda.gov/nv](http://www.nass.usda.gov/nv)

Week Ending May 26, 2024

Released May 28, 2024

## Weather Summary

The average low temperatures for Nevada ranged from 23 degrees in Ely to 66 degrees in Las Vegas. The average high temperatures ranged from 69 degrees in Eureka to 93 degrees in Las Vegas. Precipitation for Nevada ranged from 0.02 inches in Winnemucca to 0.06 inches in Elko.

## Crops Summary

Days Suitable for Fieldwork: 7.0 days. Topsoil Moisture: 25% very short, 10% short, 40% adequate and 25% surplus. Subsoil Moisture: 10% very short, 35% short, 45% adequate and 10% surplus. Pasture and Range Condition: 30% fair, 40% good, and 30% excellent. The weather remained unseasonably warm with very little precipitation. Irrigation continued across the state and runoff from snow melt was abundant. **Hay** approached first harvest. **Alfalfa** and winter grain crops were growing well. Winter grain was harvested for silage. Fields were prepared for planting **corn**. Rangeland condition declined as cheatgrass began to head.

## Weather for the Week of 5/20/2024 through 5/26/2024

Station	Temperature				Precipitation <sup>2</sup>
	High	Low	Average	Departure from Normal <sup>1</sup>	
	-- Degrees Fahrenheit --				
Reno	81	42	61	-1	0.00
Elko	73	29	50	-6	0.06
Ely	73	23	49	-5	0.00
Winnemucca	71	26	50	-8	0.02
Eureka	69	26	48	-5	0.00
Tonopah	79	36	59	-2	0.00
Las Vegas	93	66	80	0	0.00

<sup>1</sup> Normal periods 1990-2020 used in departure from normal calculations.

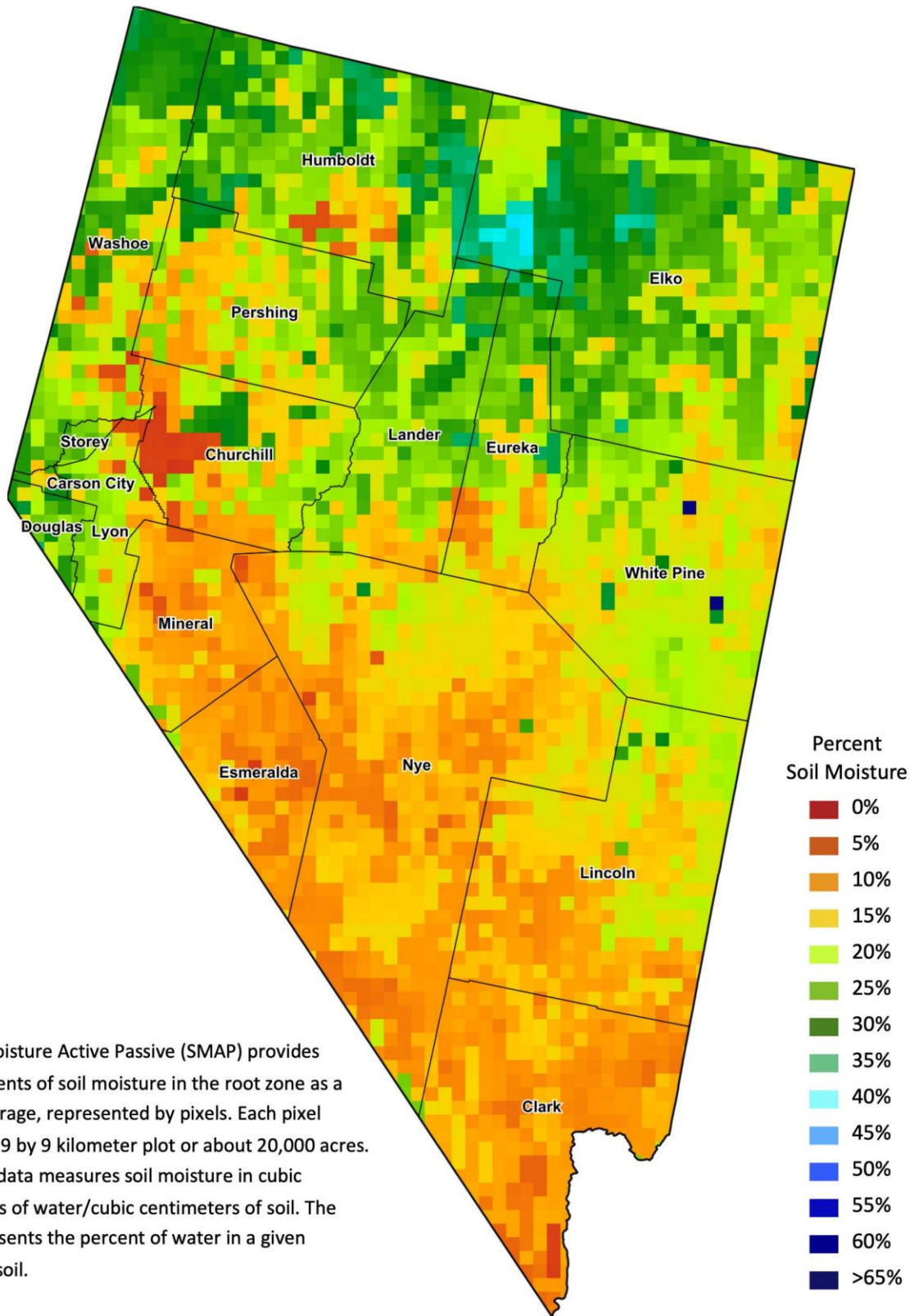
<sup>2</sup> Rain or melted snow/ice.

Data retrieved from NOAA and NWS. Calculated by USDA NASS. All rights reserved.

## Drought Conditions from the U.S. Drought Monitor as of 5/21/2024

Time	Percent of Land in Drought Rating						Drought Severity (DSCI)
	None	D0	D1	D2	D3	D4	
Current	96.98	3.02	0.00	0.00	0.00	0.00	3
Last Week	95.36	3.24	1.39	0.00	0.00	0.00	6
3 Months Ago	82.96	15.63	1.42	0.00	0.00	0.00	18
One Year Ago	33.97	45.90	17.35	2.78	0.00	0.00	89

The U.S. Drought Monitor is jointly produced by the National Drought Mitigation Center at the University of Nebraska-Lincoln, the United States Department of Agriculture, and the National Oceanic and Atmospheric Administration.  
[droughtmonitor.unl.edu/CurrentMap/StateDroughtMonitor.aspx?NV](http://droughtmonitor.unl.edu/CurrentMap/StateDroughtMonitor.aspx?NV)



The Soil Moisture Active Passive (SMAP) provides measurements of soil moisture in the root zone as a weekly average, represented by pixels. Each pixel represents 9 by 9 kilometer plot or about 20,000 acres. The SMAP data measures soil moisture in cubic centimeters of water/cubic centimeters of soil. The scale represents the percent of water in a given volume of soil.