



Nevada Crop Progress & Condition

Pacific Regional Office · 650 Capitol Mall, Suite 6-100 · Sacramento, CA 95814 · (916) 738-6600 · www.nass.usda.gov/nv

Week Ending May 12, 2024

Released May 13, 2024

Weather Summary

The average low temperatures for Nevada ranged from 18 degrees in Ely to 58 degrees in Las Vegas. The average high temperatures ranged from 74 degrees in Ely and Eureka to 91 degrees in Las Vegas. Precipitation for Nevada ranged from 0.07 inches in Elko to 0.14 inches in Eureka.

Crops Summary

Days Suitable for Fieldwork: 7.0 days. Topsoil Moisture: 5% vert short, 15% short 55% adequate and 25% surplus. Subsoil Moisture: 15% short, 70% adequate and 15% surplus. Pasture and Range Condition: 15% fair, 50% good, and 35% excellent. Cold, windy, and dry weather during the week slowed crop growth. Irrigation continued across the state. Aphids and Mormon crickets were observed in some areas. Fields were prepared for planting **corn**. **Alfalfa**, native grass hay, and forage crops were growing well.

Weather for the Week of 5/6/2024 through 5/12/2024

Station	Temperature				Precipitation ²
	High	Low	Average	Departure from Normal ¹	
	-- Degrees Fahrenheit --				-- Inches --
Reno	83	36	57	-1	0.00
Elko	76	25	47	-5	0.07
Ely	74	18	44	-5	0.00
Winnemucca	82	22	47	-7	0.00
Eureka	74	21	42	-6	0.14
Tonopah	79	30	52	-5	0.00
Las Vegas	91	58	72	-3	0.00

¹ Normal periods 1990-2020 used in departure from normal calculations.

² Rain or melted snow/ice.

Data retrieved from NOAA and NWS. Calculated by USDA NASS. All rights reserved.

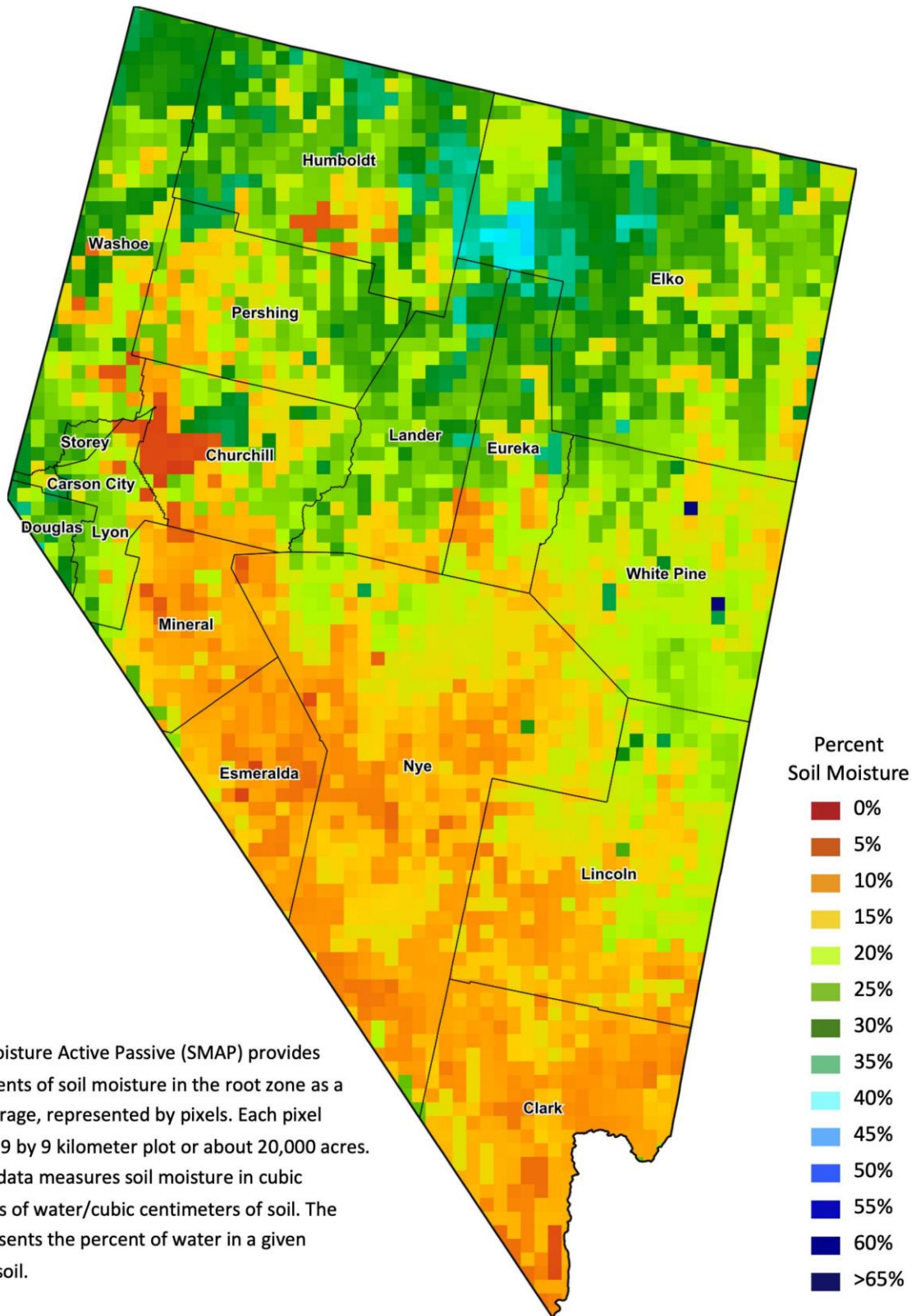
Drought Conditions from the U.S. Drought Monitor as of 5/7/2024

Time	Percent of Land in Drought Rating						Drought Severity (DSCI)
	None	D0	D1	D2	D3	D4	
Current	95.37	3.24	1.39	0.00	0.00	0.00	6
Last Week	95.37	3.24	1.39	0.00	0.00	0.00	6
3 Months Ago	82.09	16.31	1.60	0.00	0.00	0.00	20
One Year Ago	33.42	44.48	19.33	2.78	0.00	0.00	91

The U.S. Drought Monitor is jointly produced by the National Drought Mitigation Center at the University of Nebraska-Lincoln, the United States Department of Agriculture, and the National Oceanic and Atmospheric Administration.
droughtmonitor.unl.edu/CurrentMap/StateDroughtMonitor.aspx?NV



Nevada Soil Moisture Map for the Week of April 29 - May 5, 2024



The Soil Moisture Active Passive (SMAP) provides measurements of soil moisture in the root zone as a weekly average, represented by pixels. Each pixel represents 9 by 9 kilometer plot or about 20,000 acres. The SMAP data measures soil moisture in cubic centimeters of water/cubic centimeters of soil. The scale represents the percent of water in a given volume of soil.