



Nevada Crop Progress & Condition

Pacific Regional Office · 650 Capitol Mall, Suite 6-100 · Sacramento, CA 95814 · (916) 738-6600 · www.nass.usda.gov/nv

Week Ending April 21, 2024

Released April 22, 2024

Weather Summary

The average low temperatures for Nevada ranged from 22 degrees in Ely and Eureka to 48 degrees in Las Vegas. The average high temperatures ranged from 68 degrees in Winnemucca to 93 degrees in Las Vegas. Precipitation for the state was only observed in Winnemucca with 0.14 inches.

Crops Summary

Days Suitable for Fieldwork: 7.0 days. Topsoil Moisture: 15% short, 60% adequate and 25% surplus. Subsoil Moisture: 10% short, 75% adequate and 15% surplus. Pasture and Range Condition: 20% fair, 50% good, and 30% excellent. Temperatures continued to warm throughout the week with little to no precipitation. Despite the dry weather, standing water was still present from storms the week prior. Irrigation began across the state. Field preparation began for **corn** plantings. Warm temperatures promoted **alfalfa** growth.

Weather for the Week of 4/14/2024 through 4/21/2024

Station	Temperature				Precipitation ²
	High	Low	Average	Departure from Normal ¹	
	-- Degrees Fahrenheit --				
Reno	82	39	59	7	0.00
Elko	75	24	48	2	0.00
Ely	74	22	47	4	0.00
Winnemucca	68	32	47	0	0.14
Eureka	77	22	45	3	0.00
Tonopah	78	34	55	5	0.00
Las Vegas	93	48	73	5	0.00

¹ Normal periods 1990-2020 used in departure from normal calculations.

² Rain or melted snow/ice.

Data retrieved from NOAA and NWS. Calculated by USDA NASS. All rights reserved.

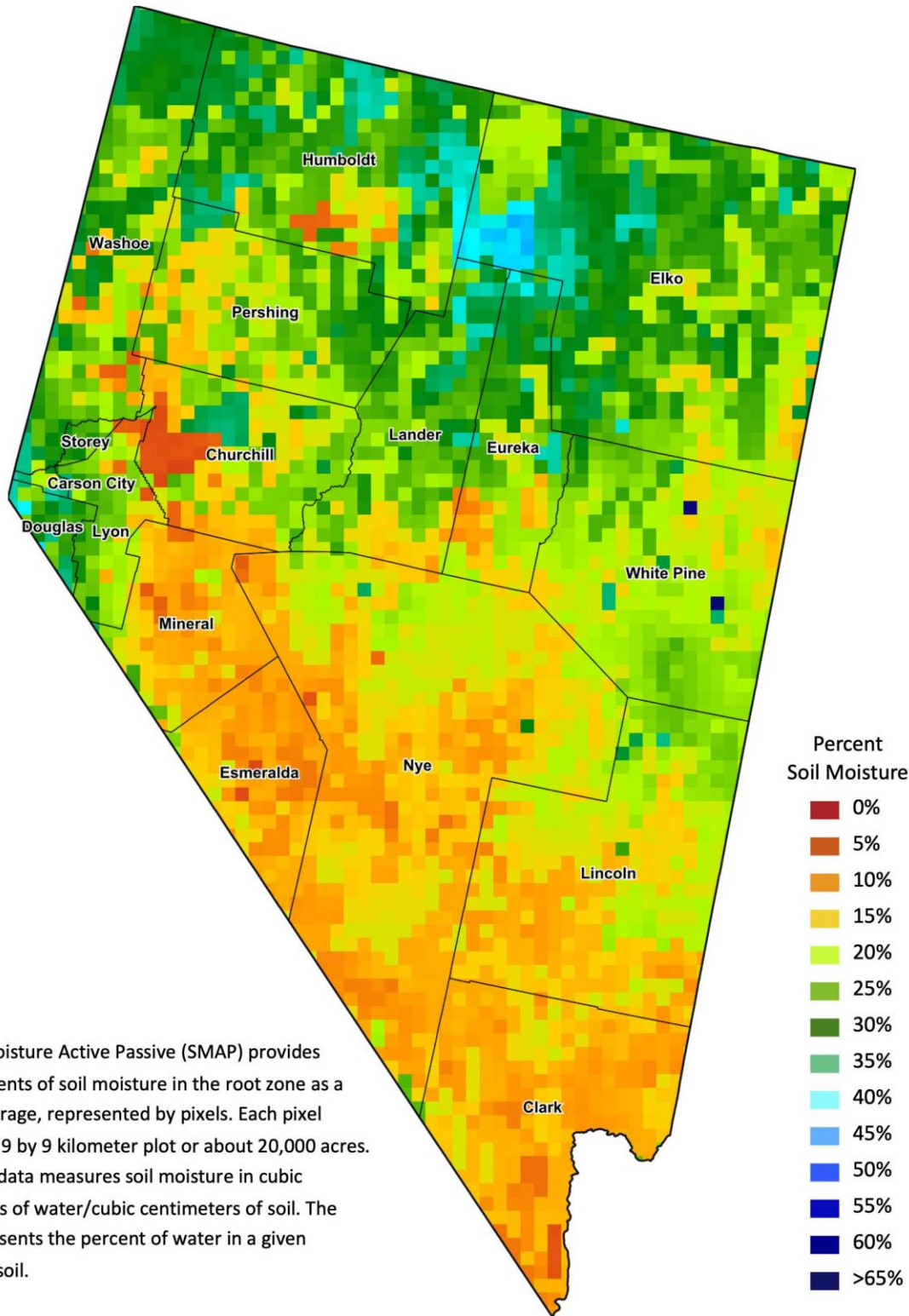
Drought Conditions from the U.S. Drought Monitor as of 4/16/2024

Time	Percent of Land in Drought Rating						Drought Severity (DSCI)
	None	D0	D1	D2	D3	D4	
Current	95.36	3.25	1.39	0.00	0.00	0.00	6
Last Week	95.36	3.25	1.39	0.00	0.00	0.00	6
3 Months Ago	94.37	4.02	1.60	0.00	0.00	0.00	7
One Year Ago	33.26	43.81	20.15	2.78	0.00	0.00	92

The U.S. Drought Monitor is jointly produced by the National Drought Mitigation Center at the University of Nebraska-Lincoln, the United States Department of Agriculture, and the National Oceanic and Atmospheric Administration.
droughtmonitor.unl.edu/CurrentMap/StateDroughtMonitor.aspx?NV



Nevada Soil Moisture Map for the Week of April 8 - 14, 2024



The Soil Moisture Active Passive (SMAP) provides measurements of soil moisture in the root zone as a weekly average, represented by pixels. Each pixel represents 9 by 9 kilometer plot or about 20,000 acres. The SMAP data measures soil moisture in cubic centimeters of water/cubic centimeters of soil. The scale represents the percent of water in a given volume of soil.