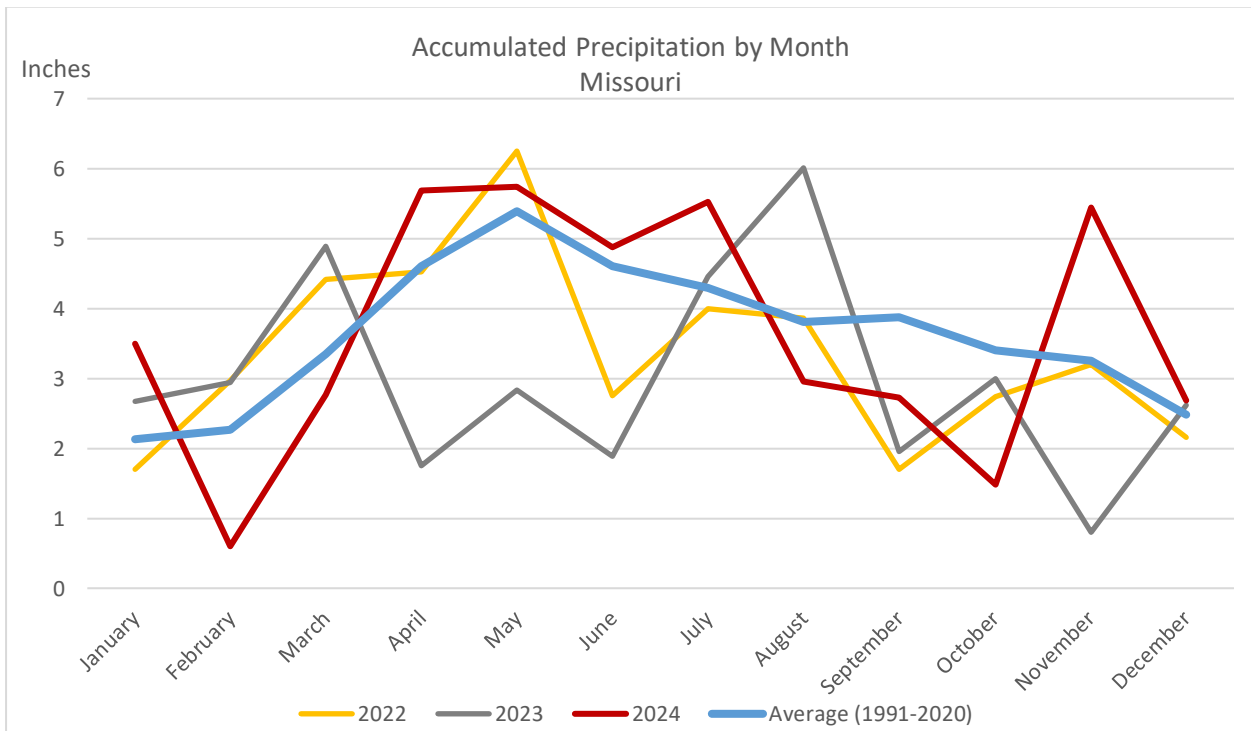
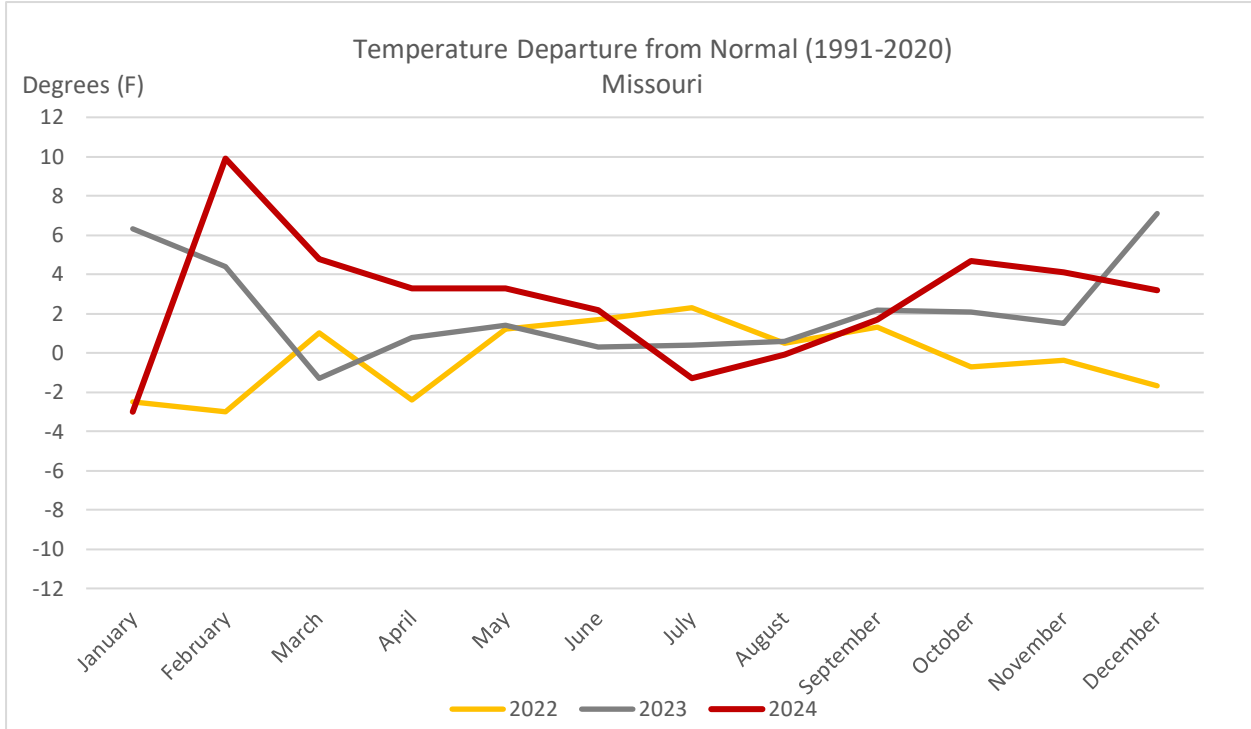


## Annual Weather Summary – Missouri 2024

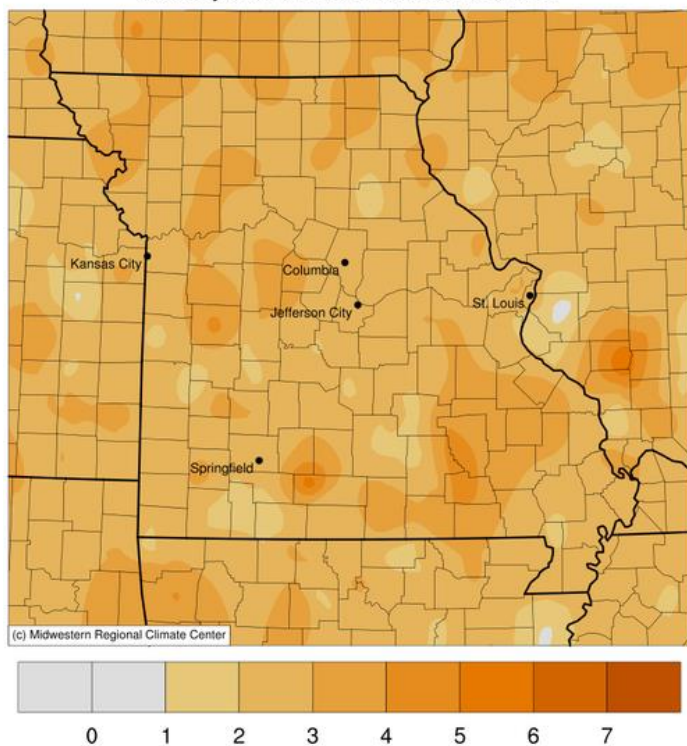


## Temperature and Precipitation by Month – Missouri: Average (1991-2020), 2023, and 2024

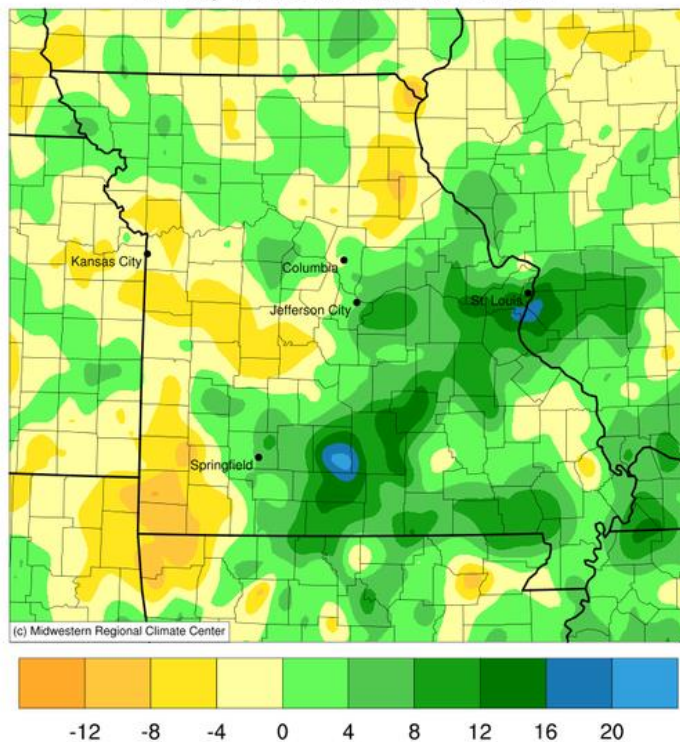
	Jan	Feb	Mar	Apr	May	Jun	Jul	Aug	Sep	Oct	Nov	Dec	Annual
<b>Temperature (Degrees F)</b>													
Average .....	30.9	35.5	45.1	55.4	64.7	73.6	77.5	75.9	68.2	56.7	44.7	34.8	55.2
2023 .....	37.2	39.9	43.8	56.2	66.1	73.9	77.9	76.5	70.4	58.8	46.2	41.9	57.4
2024 .....	27.9	45.4	49.9	58.7	68.0	75.8	76.2	75.8	69.9	61.4	48.8	38.0	58.0
<b>Precipitation (Inches)</b>													
Average .....	2.13	2.27	3.35	4.60	5.39	4.60	4.29	3.81	3.87	3.40	3.25	2.48	43.45
2023 .....	2.67	2.94	4.89	1.75	2.84	1.89	4.45	6.01	1.95	2.99	0.80	2.62	35.89
2024 .....	3.50	0.60	2.77	5.69	5.74	4.87	5.52	2.96	2.72	1.48	5.44	2.69	43.98

Weather data provided by the NOAA National Centers for Environmental information, Climate at a Glance: Statewide Time Series, published January 2025, retrieved on January 24, 2025 from <https://www.ncei.noaa.gov/access/monitoring/climate-at-a-glance/statewide/time-series>

**Average Temperature (°F): Departure from 1991-2020 Normals**  
January 01, 2024 to December 31, 2024

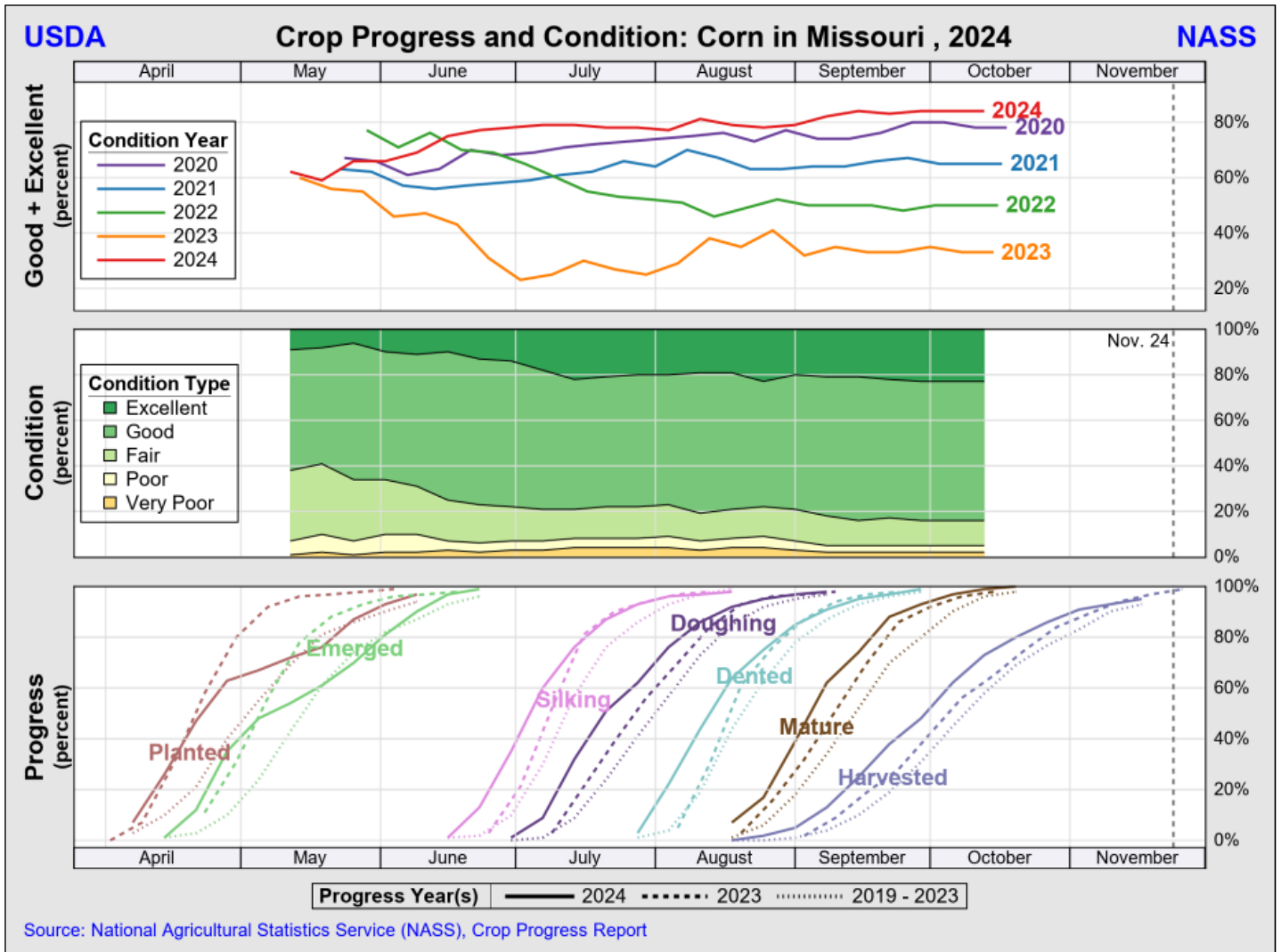


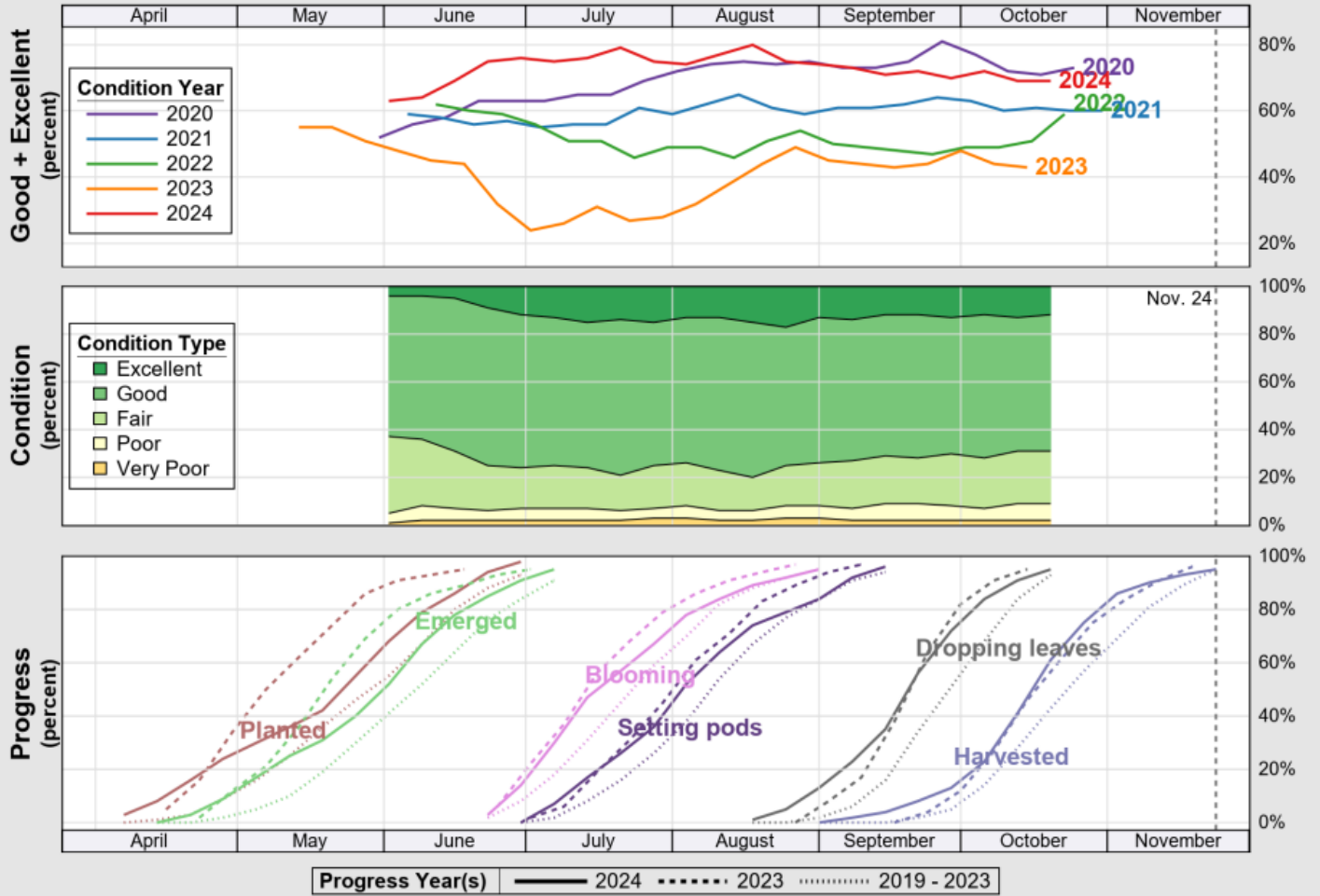
**Accumulated Precipitation (in): Departure from 1991-2020 Normals**  
January 01, 2024 to December 31, 2024



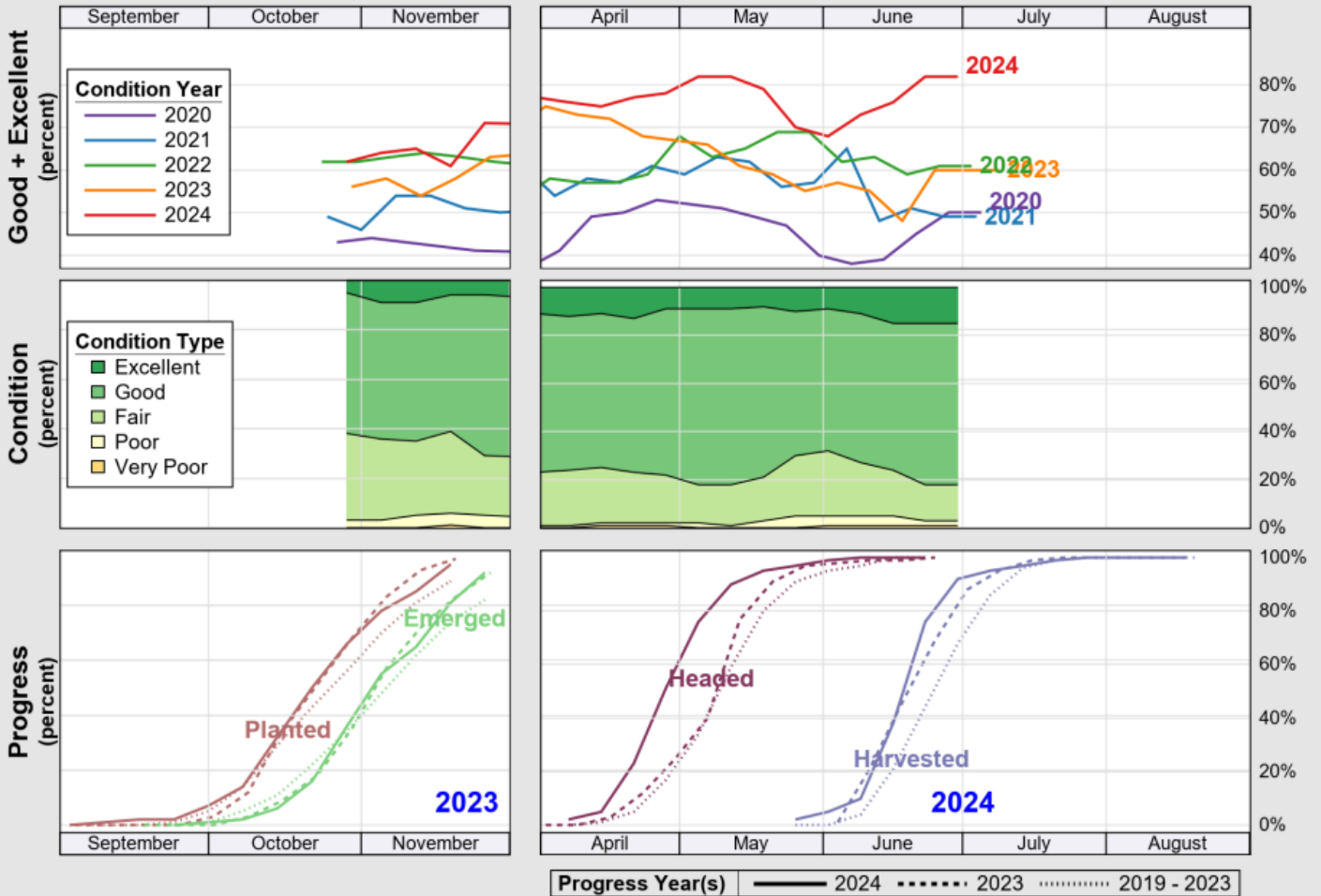
Maps provided by the Midwestern Regional Climate Center: <https://mrcc.purdue.edu/>

# Annual Crop Progress and Condition Summary – Missouri 2024

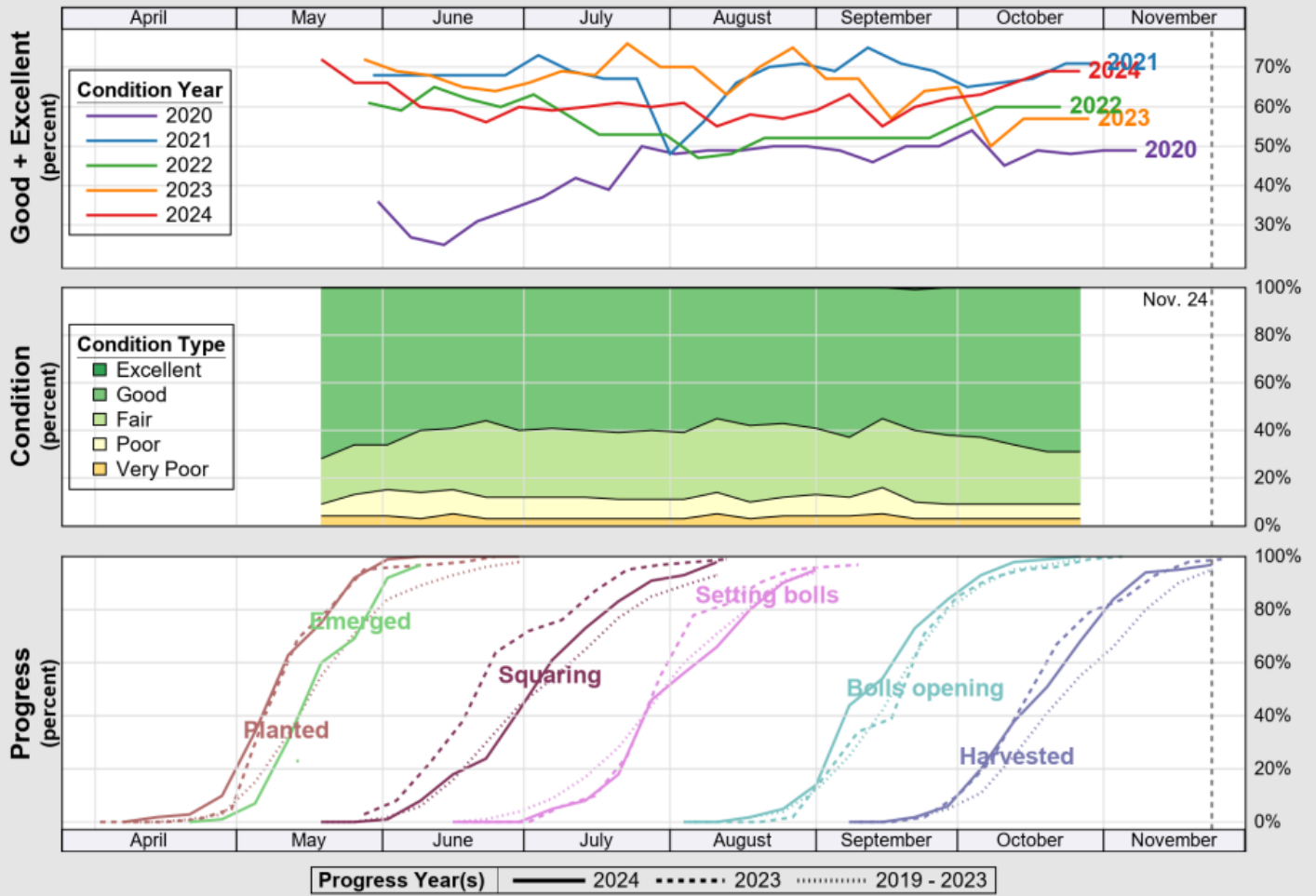




Source: National Agricultural Statistics Service (NASS), Crop Progress Report

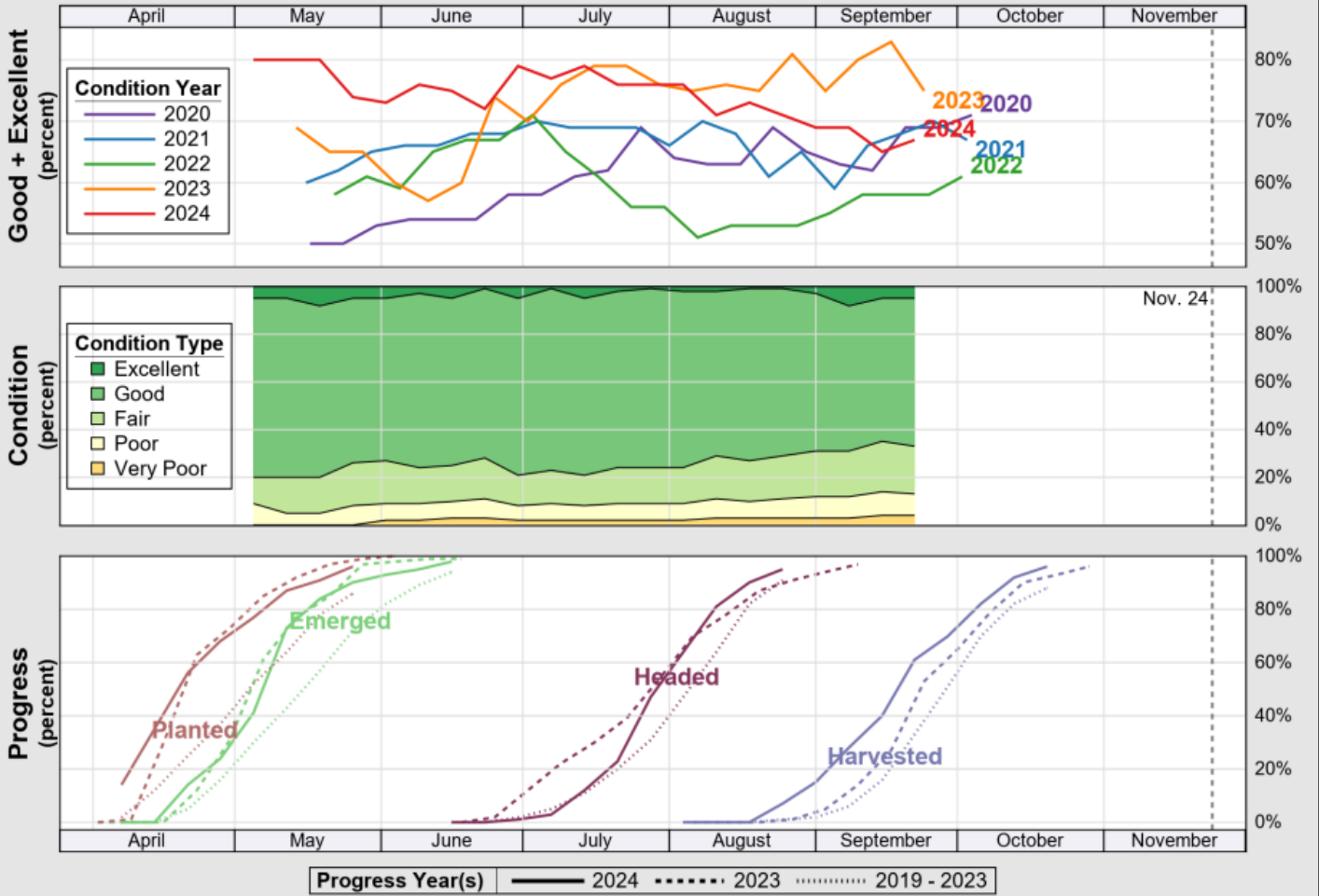


Source: National Agricultural Statistics Service (NASS), Crop Progress Report

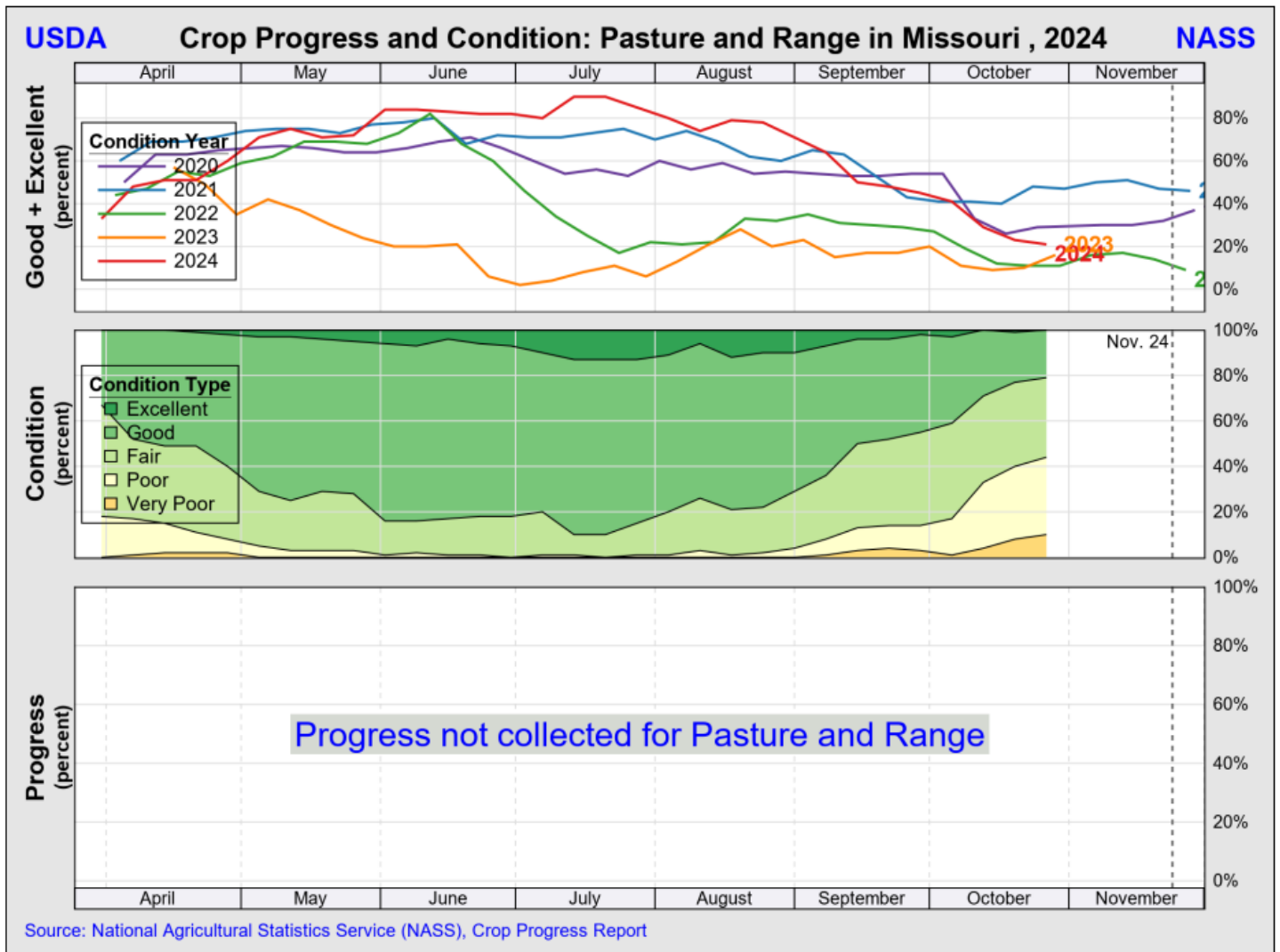


Source: National Agricultural Statistics Service (NASS), Crop Progress Report





Source: National Agricultural Statistics Service (NASS), Crop Progress Report



### Access to NASS Reports

For your convenience, you may access NASS reports and products the following ways:

- All reports are available electronically, at no cost, on the NASS web site: <http://www.nass.usda.gov>
- Both national and state specific reports are available via a free e-mail subscription. To set-up this free subscription, visit <http://www.nass.usda.gov> and in the “Follow NASS” box under “Receive reports by Email,” click on “National” or “State” to select the reports you would like to receive.
- Follow us on X @usda\_nass

For more information on NASS surveys and reports, call the Heartland Regional Field Office at (314) 595-9594 or e-mail: [nassrfohler@usda.gov](mailto:nassrfohler@usda.gov).