



Missouri Crop Progress and Condition

Released September 9, 2024

There were 6.8 days suitable for fieldwork in the week ending September 8, 2024. Statewide, the average temperature was 67.5 degrees, 5.3 degrees below normal. Precipitation averaged 0.04 inches, 0.71 inches below normal. Topsoil moisture supply was rated 7 percent very short, 35 percent short, 57 percent adequate, and 1 percent surplus. Subsoil moisture supply was rated 5 percent very short, 22 percent short, 69 percent adequate, and 4 percent surplus. Corn dented reached 91 percent, compared to the 5-year average of 87 percent. Corn mature reached 62 percent, compared to the 5-year average of 34 percent. Corn harvested for grain reached 13 percent, compared to the 5-year average of 4 percent. Corn condition was rated 2 percent very poor, 3 percent poor, 13 percent fair, 61 percent good, and 21 percent excellent. Soybeans setting pods reached 92 percent, compared to the 5-year average of 91 percent. Soybeans dropping leaves reached 23 percent, compared to the 5-year average of 6 percent. Soybeans harvested reached 2 percent. Soybean condition was rated 2 percent very poor, 5 percent poor, 20 percent fair, 59 percent good, and 14 percent excellent. Cotton bolls opening reached 44 percent, compared to the 5-year average of 25 percent. Cotton condition was rated 4 percent very poor, 8 percent poor, 25 percent fair, and 63 percent good. Rice harvested reached 28 percent, compared to the 5-year average of 6 percent. Rice condition was rated 3 percent very poor, 9 percent poor, 19 percent fair, 61 percent good, and 8 percent excellent.

Days Suitable for Fieldwork and Soil Moisture Supply: Week Ending September 8, 2024

State	Days Suitable for Fieldwork	Topsoil Moisture Supply				Subsoil Moisture Supply			
		Very Short	Short	Adequate	Surplus	Very Short	Short	Adequate	Surplus
Missouri	6.8	(percent)	(percent)	(percent)	(percent)	(percent)	(percent)	(percent)	(percent)
		7	35	57	1	5	22	69	4

Crop Progress – Missouri

Item	Week ending			2019-2023 Average
	September 8, 2024	September 1, 2024	September 8, 2023	
	(percent)	(percent)	(percent)	(percent)
Corn dented	91	85	92	87
Corn mature	62	39	46	34
Corn harvested	13	5	7	4
Soybeans setting pods	92	84	96	91
Soybeans dropping leaves	23	13	14	6
Soybeans harvested	2	-	-	-
Cotton bolls opening	44	14	29	25
Rice harvested	28	15	11	6
Alfalfa hay 3rd cutting	91	85	89	89

- Represents zero.

Corn Condition – Missouri

Date	Very Poor	Poor	Fair	Good	Excellent
	(percent)	(percent)	(percent)	(percent)	(percent)
September 8, 2024	2	3	13	61	21
September 1, 2024	3	4	14	59	20
September 8, 2023	16	22	27	33	2

Soybeans Condition – Missouri

Date	Very Poor	Poor	Fair	Good	Excellent
	(percent)	(percent)	(percent)	(percent)	(percent)
September 8, 2024	2	5	20	59	14
September 1, 2024	3	5	18	61	13
September 8, 2023	7	16	33	39	5

Cotton Condition – Missouri

Date	Very Poor	Poor	Fair	Good	Excellent
	(percent)	(percent)	(percent)	(percent)	(percent)
September 8, 2024	4	8	25	63	-
September 1, 2024	4	9	28	59	-
September 8, 2023	-	2	31	65	2

- Represents zero.

Rice Condition – Missouri

Date	Very Poor	Poor	Fair	Good	Excellent
	(percent)	(percent)	(percent)	(percent)	(percent)
September 8, 2024	3	9	19	61	8
September 1, 2024	3	9	19	66	3
September 8, 2023	-	-	20	60	20

- Represents zero.

Pasture Condition – Missouri

Date	Very Poor	Poor	Fair	Good	Excellent
	(percent)	(percent)	(percent)	(percent)	(percent)
September 8, 2024	1	7	28	57	7
September 1, 2024	-	4	25	61	10
September 8, 2023	19	28	38	13	2

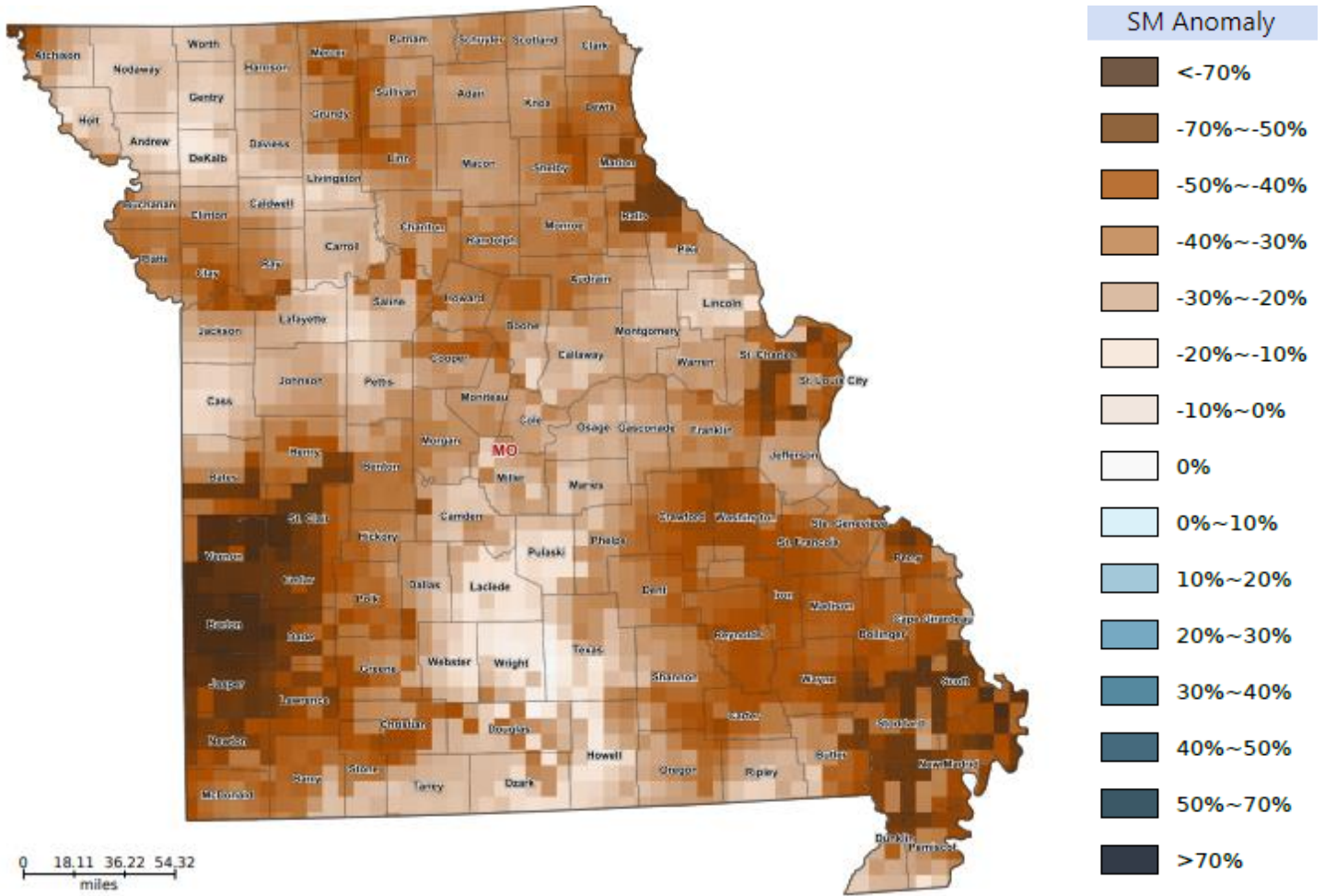
- Represents zero.

Supply of Hay and Other Roughages and Stock Water Supply: September 8, 2024

State	Supply of Hay and Other Roughages				Stock Water Supply			
	Very Short	Short	Adequate	Surplus	Very Short	Short	Adequate	Surplus
	(percent)	(percent)	(percent)	(percent)	(percent)	(percent)	(percent)	(percent)
Missouri	-	4	77	19	-	7	91	2

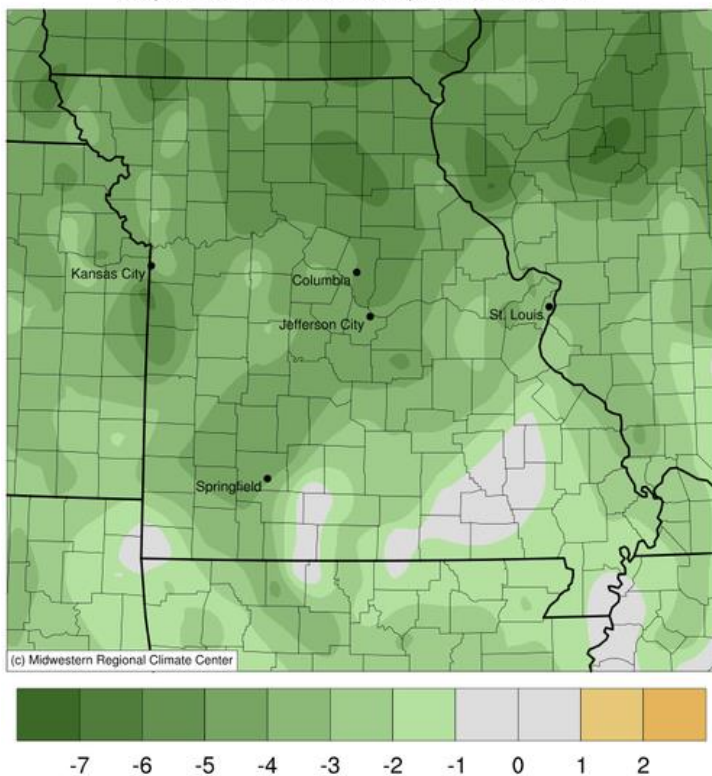
- Represents zero.

Soil Moisture Deviation from Historical Average – September 6th

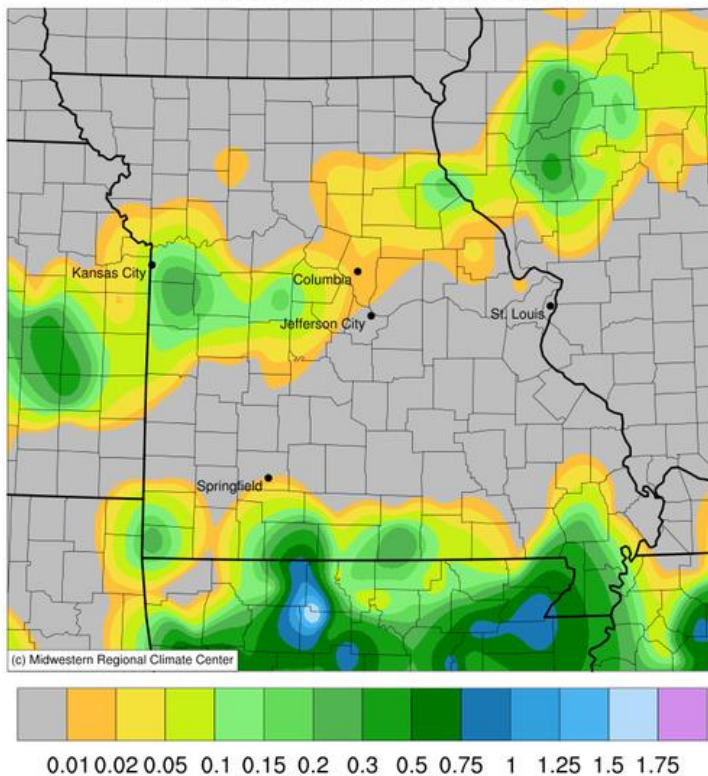


<https://cloud.csiss.gmu.edu/Crop-CASMA/>
(historical average includes 2015-current)

Average Temperature (°F): Departure from 1991-2020 Normals
September 02, 2024 to September 08, 2024



Accumulated Precipitation (in)
September 02, 2024 to September 08, 2024



Access to NASS Reports

For your convenience, you may access NASS reports and products the following ways:

- All reports are available electronically, at no cost, on the NASS web site: <http://www.nass.usda.gov>
- Both national and state specific reports are available via a free e-mail subscription. To set-up this free subscription, visit <http://www.nass.usda.gov> and in the “Follow NASS” box under “Receive reports by Email,” click on “National” or “State” to select the reports you would like to receive.
- Follow us on X @usda_nass

For more information on NASS surveys and reports, call the Heartland Regional Field Office at (314) 595-9594 or e-mail: nassrfohler@usda.gov.