



Missouri Crop Progress and Condition

Released September 3, 2024

There were 6.1 days suitable for fieldwork in the week ending September 1, 2024. Statewide, the average temperature was 80.0 degrees, 4.7 degrees above normal. Precipitation averaged 0.60 inches, 0.29 inches below normal. Topsoil moisture supply was rated 3 percent very short, 26 percent short, 70 percent adequate, and 1 percent surplus. Subsoil moisture supply was rated 2 percent very short, 17 percent short, 76 percent adequate, and 5 percent surplus. Corn dented reached 85 percent, compared to the 5-year average of 78 percent. Corn mature reached 39 percent, compared to the 5-year average of 18 percent. Corn harvested for grain reached 5 percent, compared to the 5-year average of 1 percent. Corn condition was rated 3 percent very poor, 4 percent poor, 14 percent fair, 59 percent good, and 20 percent excellent. Soybeans blooming reached 95 percent, equal to the 5-year average. Soybeans setting pods reached 84 percent, equal to the 5-year average. Soybeans dropping leaves reached 13 percent, compared to the 5-year average of 2 percent. Soybean condition was rated 3 percent very poor, 5 percent poor, 18 percent fair, 61 percent good, and 13 percent excellent. Cotton setting bolls reached 95 percent, compared to the 5-year average of 94 percent. Cotton bolls opening reached 14 percent, compared to the 5-year average of 12 percent. Cotton condition was rated 4 percent very poor, 9 percent poor, 28 percent fair, and 59 percent good. Rice harvested reached 15 percent, compared to the 5-year average of 2 percent. Rice condition was rated 3 percent very poor, 9 percent poor, 19 percent fair, 66 percent good, and 3 percent excellent.

Days Suitable for Fieldwork and Soil Moisture Supply: Week Ending September 1, 2024

State	Days Suitable for Fieldwork	Topsoil Moisture Supply				Subsoil Moisture Supply			
		Very Short	Short	Adequate	Surplus	Very Short	Short	Adequate	Surplus
		(percent)	(percent)	(percent)	(percent)	(percent)	(percent)	(percent)	(percent)
Missouri	6.1	3	26	70	1	2	17	76	5

Crop Progress – Missouri

Item	Week ending			2019-2023 Average
	September 1, 2024	August 25, 2024	September 1, 2023	
	(percent)	(percent)	(percent)	(percent)
Corn dented	85	75	84	78
Corn mature	39	17	27	18
Corn harvested	5	2	1	1
Soybeans blooming	95	92	98	95
Soybeans setting pods	84	79	93	84
Soybeans dropping leaves	13	5	6	2
Cotton setting bolls	95	90	96	94
Cotton bolls opening	14	5	13	12
Rice harvested	15	7	4	2
Alfalfa hay 3rd cutting	85	77	85	83

Corn Condition – Missouri

Date	Very Poor	Poor	Fair	Good	Excellent
	(percent)	(percent)	(percent)	(percent)	(percent)
September 1, 2024	3	4	14	59	20
August 25, 2024	4	5	13	55	23
September 1, 2023	15	25	28	30	2

Soybeans Condition – Missouri

Date	Very Poor	Poor	Fair	Good	Excellent
	(percent)	(percent)	(percent)	(percent)	(percent)
September 1, 2024	3	5	18	61	13
August 25, 2024	3	5	17	58	17
September 1, 2023	7	16	32	40	5

Cotton Condition – Missouri

Date	Very Poor	Poor	Fair	Good	Excellent
	(percent)	(percent)	(percent)	(percent)	(percent)
September 1, 2024	4	9	28	59	-
August 25, 2024	4	8	31	57	-
September 1, 2023	-	2	31	63	4

- Represents zero.

Rice Condition – Missouri

Date	Very Poor	Poor	Fair	Good	Excellent
	(percent)	(percent)	(percent)	(percent)	(percent)
September 1, 2024	3	9	19	66	3
August 25, 2024	3	8	18	70	1
September 1, 2023	-	-	25	53	22

- Represents zero.

Pasture Condition – Missouri

Date	Very Poor	Poor	Fair	Good	Excellent
	(percent)	(percent)	(percent)	(percent)	(percent)
September 1, 2024	-	4	25	61	10
August 25, 2024	-	2	20	68	10
September 1, 2023	14	29	34	22	1

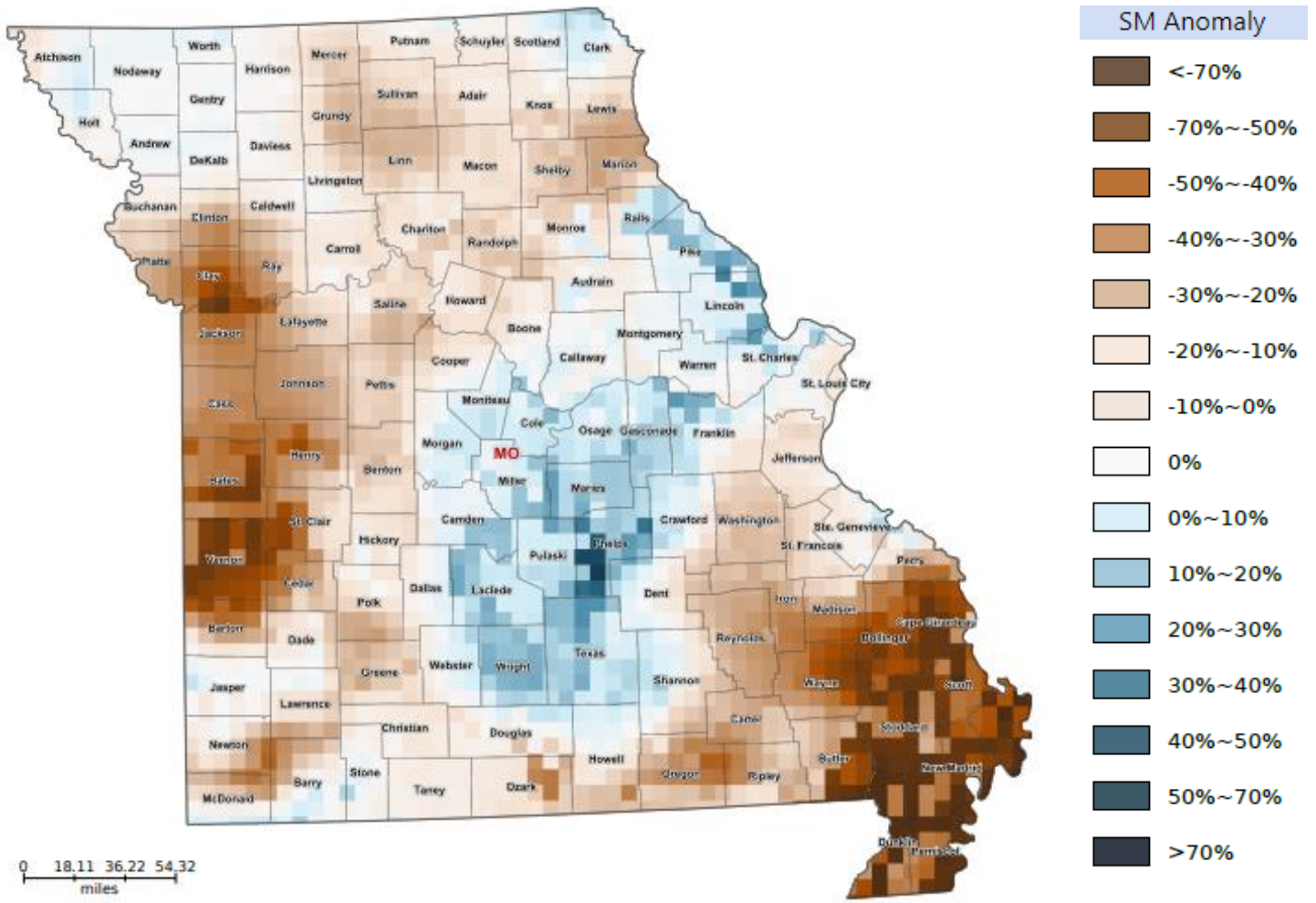
- Represents zero.

Supply of Hay and Other Roughages and Stock Water Supply: September 1, 2024

State	Supply of Hay and Other Roughages				Stock Water Supply			
	Very Short	Short	Adequate	Surplus	Very Short	Short	Adequate	Surplus
	(percent)	(percent)	(percent)	(percent)	(percent)	(percent)	(percent)	(percent)
Missouri	-	5	77	18	-	8	89	3

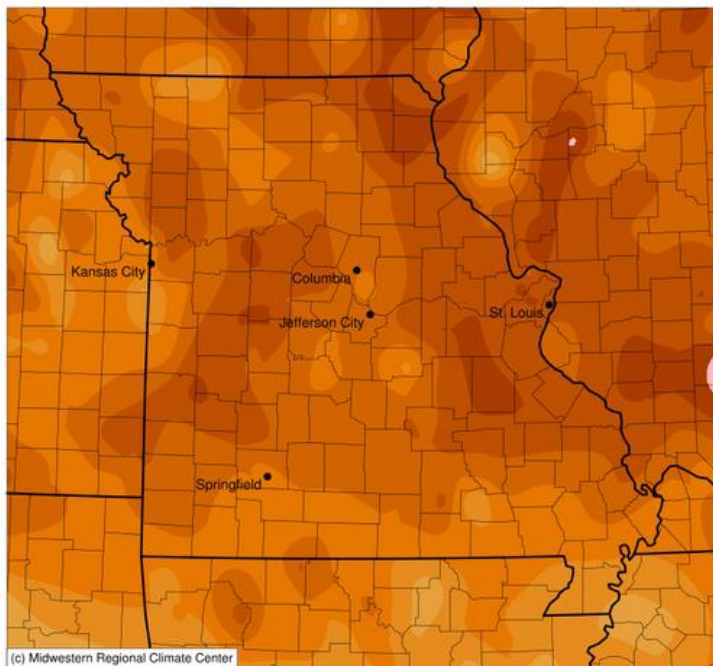
- Represents zero.

Soil Moisture Deviation from Historical Average – August 31st

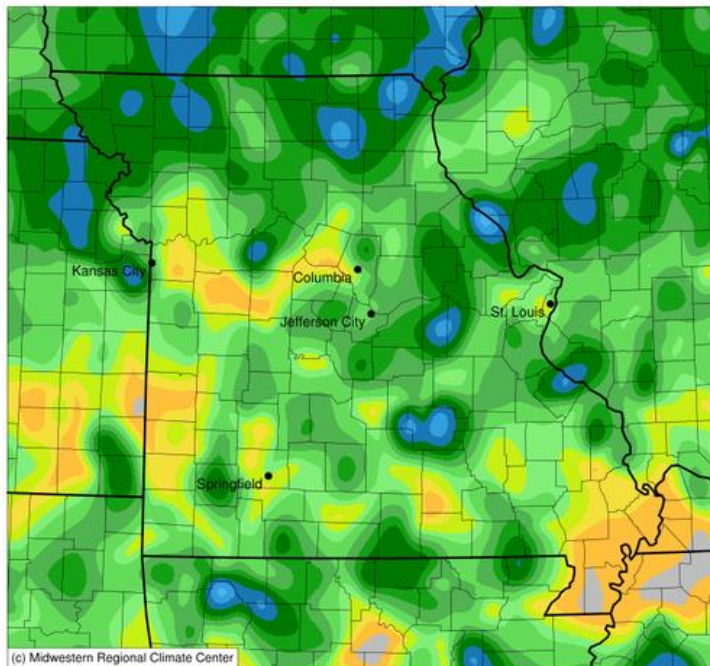


<https://cloud.csiss.gmu.edu/Crop-CASMA/>
(historical average includes 2015-current)

Average Temperature (°F): Departure from 1991-2020 Normals
August 26, 2024 to September 01, 2024



Accumulated Precipitation (in)
August 26, 2024 to September 01, 2024



Access to NASS Reports

For your convenience, you may access NASS reports and products the following ways:

- All reports are available electronically, at no cost, on the NASS web site: <http://www.nass.usda.gov>
- Both national and state specific reports are available via a free e-mail subscription. To set-up this free subscription, visit <http://www.nass.usda.gov> and in the “Follow NASS” box under “Receive reports by Email,” click on “National” or “State” to select the reports you would like to receive.
- Follow us on X @usda_nass

For more information on NASS surveys and reports, call the Heartland Regional Field Office at (314) 595-9594 or e-mail: nassrfohler@usda.gov.