



Missouri Crop Progress and Condition

Released August 26, 2024

There were 6.2 days suitable for fieldwork in the week ending August 25, 2024. Statewide, the average temperature was 72.2 degrees, 3.8 degrees below normal. Precipitation averaged 0.35 inches, 0.30 inches below normal. Topsoil moisture supply was rated 2 percent very short, 22 percent short, 72 percent adequate, and 4 percent surplus. Subsoil moisture supply was rated 1 percent very short, 18 percent short, 73 percent adequate, and 8 percent surplus. Corn dough reached 95 percent, compared to the 5-year average of 92 percent. Corn dented reached 75 percent, compared to the 5-year average of 63 percent. Corn mature reached 17 percent, compared to the 5-year average of 6 percent. Corn harvested for grain reached 2 percent. Corn condition was rated 4 percent very poor, 5 percent poor, 13 percent fair, 55 percent good, and 23 percent excellent. Soybeans blooming reached 92 percent, equal to the 5-year average. Soybeans setting pods reached 79 percent, compared to the 5-year average of 77 percent. Soybeans dropping leaves reached 5 percent. Soybean condition was rated 3 percent very poor, 5 percent poor, 17 percent fair, 58 percent good, and 17 percent excellent. Cotton setting bolls reached 90 percent, compared to the 5-year average of 91 percent. Cotton bolls opening reached 5 percent, compared to the 5-year average of 4 percent. Cotton condition was rated 4 percent very poor, 8 percent poor, 31 percent fair, and 57 percent good. Rice headed reached 95 percent, compared to the 5-year average of 91 percent. Rice harvested reached 7 percent, compared to the 5-year average of 1 percent. Rice condition was rated 3 percent very poor, 8 percent poor, 18 percent fair, 70 percent good, and 1 percent excellent.

Days Suitable for Fieldwork and Soil Moisture Supply: Week Ending August 25, 2024

State	Days Suitable for Fieldwork	Topsoil Moisture Supply				Subsoil Moisture Supply			
		Very Short	Short	Adequate	Surplus	Very Short	Short	Adequate	Surplus
		(percent)	(percent)	(percent)	(percent)	(percent)	(percent)	(percent)	(percent)
Missouri	6.2	2	22	72	4	1	18	73	8

Crop Progress – Missouri

Item	Week ending			2019-2023 Average
	August 25, 2024	August 18, 2024	August 25, 2023	
	(percent)	(percent)	(percent)	(percent)
Corn dough	95	92	95	92
Corn dented	75	64	72	63
Corn mature	17	7	12	6
Corn harvested	2	-	-	-
Soybeans blooming	92	89	96	92
Soybeans setting pods	79	74	87	77
Soybeans dropping leaves	5	1	-	-
Cotton setting bolls	90	80	94	91
Cotton bolls opening	5	2	1	4
Rice headed	95	90	90	91
Rice harvested	7	-	1	1
Alfalfa hay 3rd cutting	77	72	74	74

- Represents zero.

Corn Condition – Missouri

Date	Very Poor	Poor	Fair	Good	Excellent
	(percent)	(percent)	(percent)	(percent)	(percent)
August 25, 2024	4	5	13	55	23
August 18, 2024	4	4	13	60	19
August 25, 2023	17	19	23	38	3

Soybeans Condition – Missouri

Date	Very Poor	Poor	Fair	Good	Excellent
	(percent)	(percent)	(percent)	(percent)	(percent)
August 25, 2024	3	5	17	58	17
August 18, 2024	2	4	14	65	15
August 25, 2023	8	13	30	45	4

Cotton Condition – Missouri

Date	Very Poor	Poor	Fair	Good	Excellent
	(percent)	(percent)	(percent)	(percent)	(percent)
August 25, 2024	4	8	31	57	-
August 18, 2024	3	7	32	58	-
August 25, 2023	-	3	22	73	2

- Represents zero.

Rice Condition – Missouri

Date	Very Poor	Poor	Fair	Good	Excellent
	(percent)	(percent)	(percent)	(percent)	(percent)
August 25, 2024	3	8	18	70	1
August 18, 2024	3	7	17	72	1
August 25, 2023	-	-	19	68	13

- Represents zero.

Pasture Condition – Missouri

Date	Very Poor	Poor	Fair	Good	Excellent
	(percent)	(percent)	(percent)	(percent)	(percent)
August 25, 2024	-	2	20	68	10
August 18, 2024	-	1	20	67	12
August 25, 2023	13	28	39	20	-

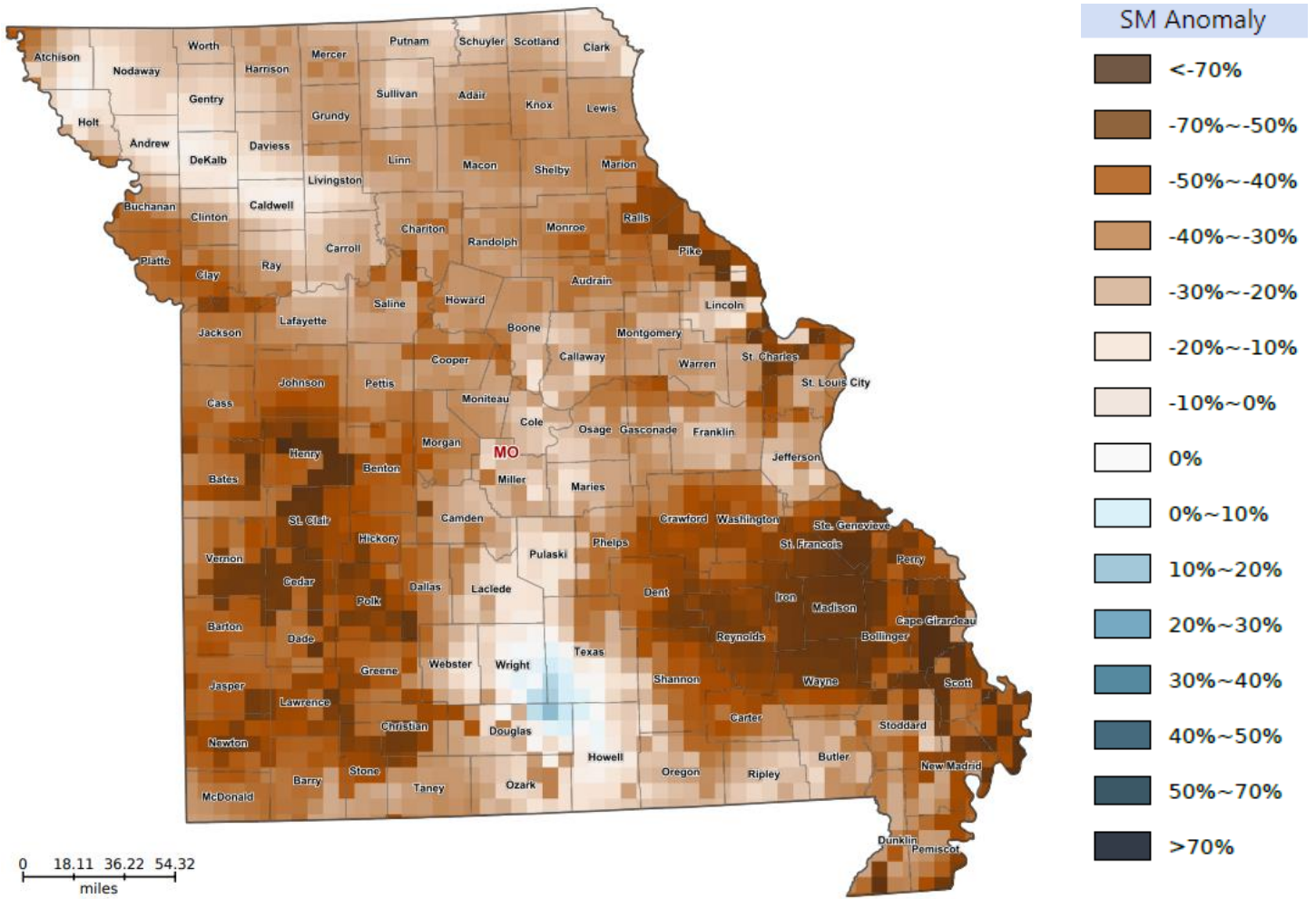
- Represents zero.

Supply of Hay and Other Roughages and Stock Water Supply: August 25, 2024

State	Supply of Hay and Other Roughages				Stock Water Supply			
	Very Short	Short	Adequate	Surplus	Very Short	Short	Adequate	Surplus
	(percent)	(percent)	(percent)	(percent)	(percent)	(percent)	(percent)	(percent)
Missouri	-	6	79	15	-	5	90	5

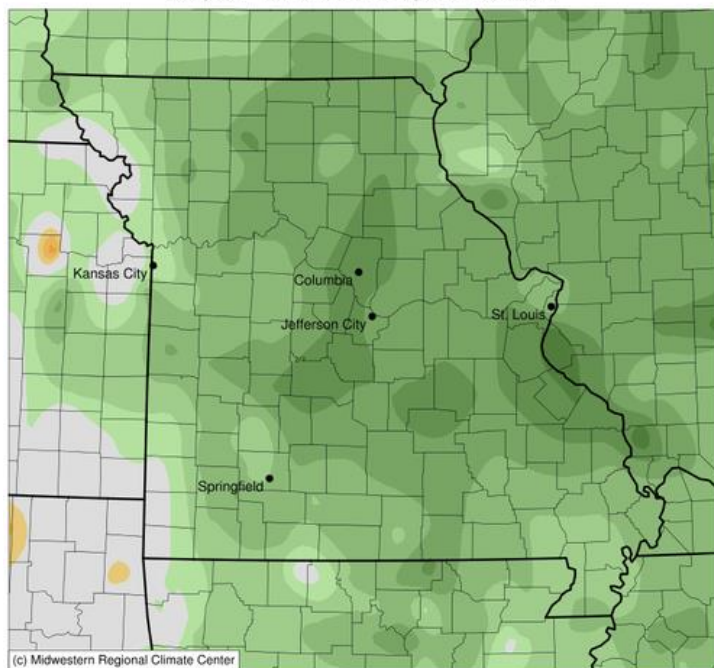
- Represents zero.

Soil Moisture Deviation from Historical Average – August 23rd

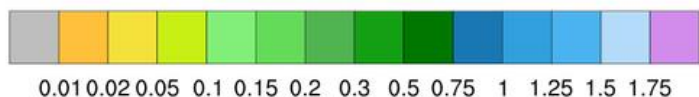
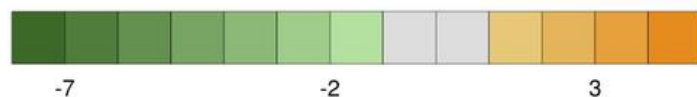
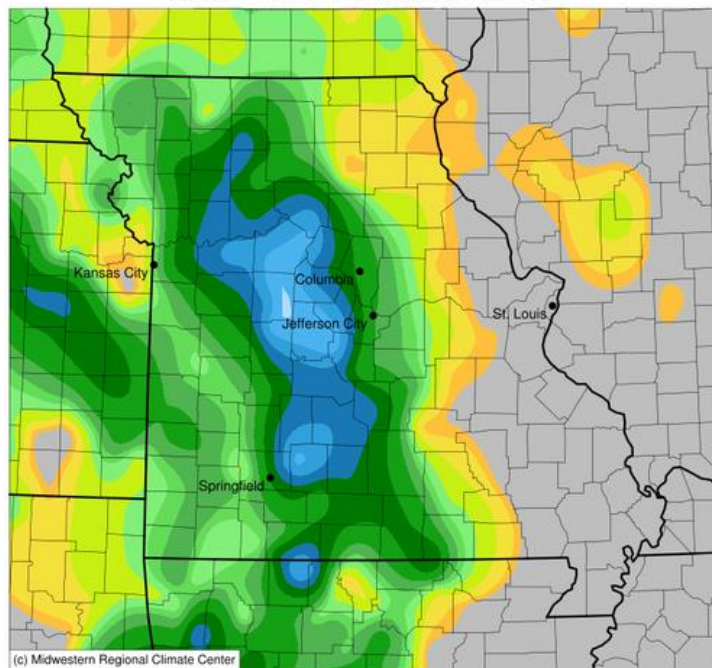


<https://cloud.csiss.gmu.edu/Crop-CASMA/>
(historical average includes 2015-current)

Average Temperature (°F): Departure from 1991-2020 Normals
August 19, 2024 to August 25, 2024



Accumulated Precipitation (in)
August 19, 2024 to August 25, 2024



Access to NASS Reports

For your convenience, you may access NASS reports and products the following ways:

- All reports are available electronically, at no cost, on the NASS web site: <http://www.nass.usda.gov>
- Both national and state specific reports are available via a free e-mail subscription. To set-up this free subscription, visit <http://www.nass.usda.gov> and in the “Follow NASS” box under “Receive reports by Email,” click on “National” or “State” to select the reports you would like to receive.
- Follow us on X @usda_nass

For more information on NASS surveys and reports, call the Heartland Regional Field Office at (314) 595-9594 or e-mail: nassrfohlr@usda.gov.