



Missouri Crop Progress and Condition

Released August 19, 2024

There were 4.5 days suitable for fieldwork in the week ending August 18, 2024. Statewide, the average temperature was 76.3 degrees, 0.1 degrees above normal. Precipitation averaged 1.89 inches, 1.01 inches above normal. Topsoil moisture supply was rated 13 percent short, 81 percent adequate, and 6 percent surplus. Subsoil moisture supply was rated 10 percent short, 81 percent adequate, and 9 percent surplus. Corn dough reached 92 percent, compared to the 5-year average of 85 percent. Corn dented reached 64 percent, compared to the 5-year average of 44 percent. Corn mature reached 7 percent, compared to the 5-year average of 1 percent. Corn condition was rated 4 percent very poor, 4 percent poor, 13 percent fair, 60 percent good, and 19 percent excellent. Soybeans blooming reached 89 percent, compared to the 5-year average of 88 percent. Soybeans setting pods reached 74 percent, compared to the 5-year average of 67 percent. Soybeans dropping leaves reached 1 percent. Soybean condition was rated 2 percent very poor, 4 percent poor, 14 percent fair, 65 percent good, and 15 percent excellent. Cotton setting bolls reached 80 percent, compared to the 5-year average of 81 percent. Cotton bolls opening reached 2 percent, equal to the 5-year average. Cotton condition was rated 3 percent very poor, 7 percent poor, 32 percent fair, and 58 percent good. Rice headed reached 90 percent, compared to the 5-year average of 82 percent. Rice condition was rated 3 percent very poor, 7 percent poor, 17 percent fair, 72 percent good, and 1 percent excellent.

Days Suitable for Fieldwork and Soil Moisture Supply: Week Ending August 18, 2024

State	Days Suitable for Fieldwork	Topsoil Moisture Supply				Subsoil Moisture Supply			
		Very Short	Short	Adequate	Surplus	Very Short	Short	Adequate	Surplus
		(percent)	(percent)	(percent)	(percent)	(percent)	(percent)	(percent)	(percent)
Missouri	4.5	-	13	81	6	-	10	81	9

- Represents zero.

Crop Progress – Missouri

Item	Week ending			2019-2023 Average
	August 18, 2024	August 11, 2024	August 18, 2023	
	(percent)	(percent)	(percent)	(percent)
Corn dough	92	86	90	85
Corn dented	64	44	52	44
Corn mature	7	(NA)	2	1
Soybeans blooming	89	84	93	88
Soybeans setting pods	74	64	80	67
Soybeans dropping leaves	1	(NA)	-	-
Cotton setting bolls	80	66	88	81
Cotton bolls opening	2	-	-	2
Rice headed	90	81	84	82
Alfalfa hay 3rd cutting	72	61	65	64

(NA) Not available.

- Represents zero.

Corn Condition – Missouri

Date	Very Poor	Poor	Fair	Good	Excellent
	(percent)	(percent)	(percent)	(percent)	(percent)
August 18, 2024	4	4	13	60	19
August 11, 2024	3	4	12	62	19
August 18, 2023	13	23	29	33	2

Soybeans Condition – Missouri

Date	Very Poor	Poor	Fair	Good	Excellent
	(percent)	(percent)	(percent)	(percent)	(percent)
August 18, 2024	2	4	14	65	15
August 11, 2024	2	4	17	64	13
August 18, 2023	6	16	34	38	6

Cotton Condition – Missouri

Date	Very Poor	Poor	Fair	Good	Excellent
	(percent)	(percent)	(percent)	(percent)	(percent)
August 18, 2024	3	7	32	58	-
August 11, 2024	5	9	31	55	-
August 18, 2023	-	2	28	66	4

- Represents zero.

Rice Condition – Missouri

Date	Very Poor	Poor	Fair	Good	Excellent
	(percent)	(percent)	(percent)	(percent)	(percent)
August 18, 2024	3	7	17	72	1
August 11, 2024	3	8	18	69	2
August 18, 2023	-	-	25	65	10

- Represents zero.

Pasture Condition – Missouri

Date	Very Poor	Poor	Fair	Good	Excellent
	(percent)	(percent)	(percent)	(percent)	(percent)
August 18, 2024	-	1	20	67	12
August 11, 2024	-	3	23	68	6
August 18, 2023	15	26	31	28	-

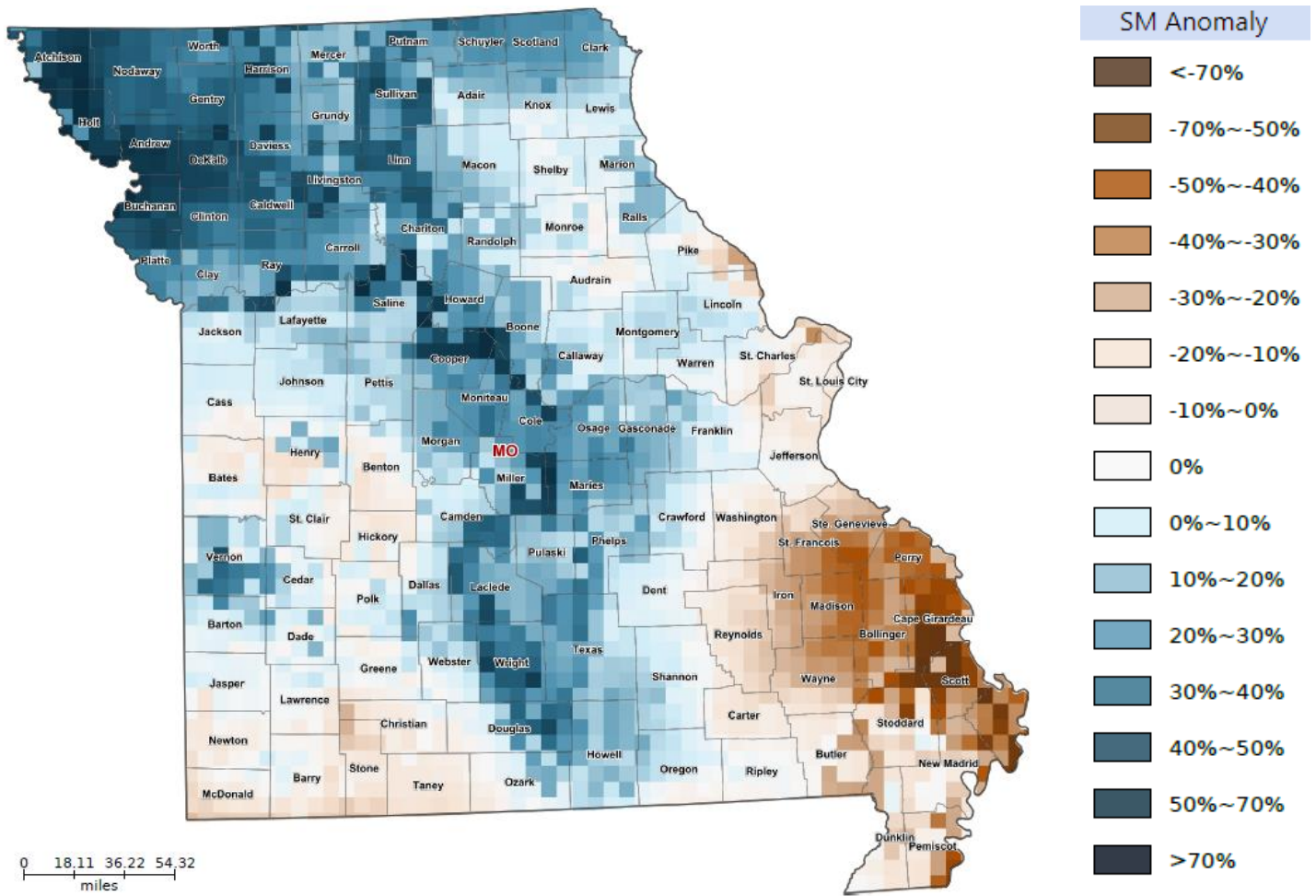
- Represents zero.

Supply of Hay and Other Roughages and Stock Water Supply: August 18, 2024

State	Supply of Hay and Other Roughages				Stock Water Supply			
	Very Short	Short	Adequate	Surplus	Very Short	Short	Adequate	Surplus
	(percent)	(percent)	(percent)	(percent)	(percent)	(percent)	(percent)	(percent)
Missouri	-	3	82	15	-	3	92	5

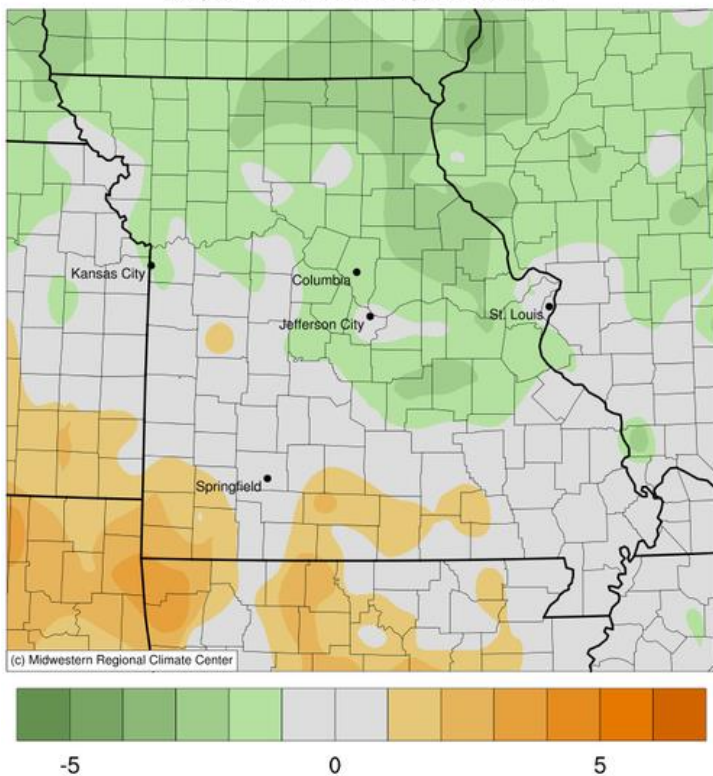
- Represents zero.

Soil Moisture Deviation from Historical Average – August 15th

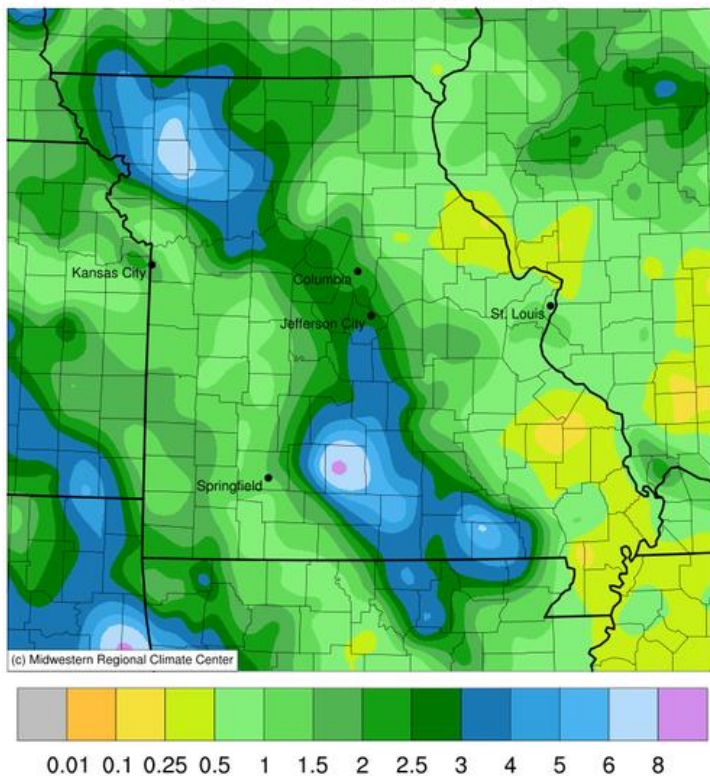


<https://cloud.csiss.gmu.edu/Crop-CASMA/>
(historical average includes 2015-current)

Average Temperature (°F): Departure from 1991-2020 Normals
August 12, 2024 to August 18, 2024



Accumulated Precipitation (in)
August 12, 2024 to August 18, 2024



Access to NASS Reports

For your convenience, you may access NASS reports and products the following ways:

- All reports are available electronically, at no cost, on the NASS web site: <http://www.nass.usda.gov>
- Both national and state specific reports are available via a free e-mail subscription. To set-up this free subscription, visit <http://www.nass.usda.gov> and in the “Follow NASS” box under “Receive reports by Email,” click on “National” or “State” to select the reports you would like to receive.
- Follow us on X @usda_nass

For more information on NASS surveys and reports, call the Heartland Regional Field Office at (314) 595-9594 or e-mail: nassrfohlr@usda.gov.