



Missouri Crop Progress and Condition

Released July 29, 2024

There were 6.4 days suitable for fieldwork in the week ending July 28, 2024. Statewide, the average temperature was 76.5 degrees, 1.0 degrees below normal. Precipitation averaged 0.32 inches, 0.64 inches below normal. Topsoil moisture supply was rated 1 percent very short, 10 percent short, 84 percent adequate, and 5 percent surplus. Subsoil moisture supply was rated 6 percent short, 92 percent adequate, and 2 percent surplus. Corn silking reached 93 percent, compared to the 5-year average of 86 percent. Corn dough reached 62 percent, compared to the 5-year average of 41 percent. Corn dented reached 3 percent, compared to the 5-year average of 1 percent. Corn condition was rated 4 percent very poor, 4 percent poor, 14 percent fair, 58 percent good, and 20 percent excellent. Soybeans blooming reached 67 percent, compared to the 5-year average of 59 percent. Soybeans setting pods reached 36 percent, compared to the 5-year average of 26 percent. Soybean condition was rated 3 percent very poor, 4 percent poor, 18 percent fair, 60 percent good, and 15 percent excellent. Cotton squaring reached 91 percent, compared to the 5-year average of 85 percent. Cotton setting bolls reached 46 percent, compared to the 5-year average of 44 percent. Cotton condition was rated 3 percent very poor, 8 percent poor, 29 percent fair, and 60 percent good. Rice headed reached 47 percent, compared to the 5-year average of 31 percent. Rice condition was rated 2 percent very poor, 7 percent poor, 15 percent fair, 75 percent good, and 1 percent excellent.

Days Suitable for Fieldwork and Soil Moisture Supply: Week Ending July 28, 2024

State	Days Suitable for Fieldwork	Topsoil Moisture Supply				Subsoil Moisture Supply			
		Very Short	Short	Adequate	Surplus	Very Short	Short	Adequate	Surplus
		(percent)	(percent)	(percent)	(percent)	(percent)	(percent)	(percent)	(percent)
Missouri	6.4	1	10	84	5	-	6	92	2

- Represents zero.

Crop Progress – Missouri

Item	Week ending			2019-2023 Average
	July 28, 2024	July 21, 2024	July 28, 2023	
	(percent)	(percent)	(percent)	(percent)
Corn silking	93	87	93	86
Corn dough	62	51	51	41
Corn dented	3	(NA)	1	1
Soybeans blooming	67	57	76	59
Soybeans setting pods	36	26	41	26
Cotton squaring	91	83	96	85
Cotton setting bolls	46	18	46	44
Rice headed	47	23	50	31
Alfalfa hay 2nd cutting	91	80	92	89
Alfalfa hay 3rd cutting	30	12	28	20
Other hay cut	95	92	94	94

(NA) Not available.

Corn Condition – Missouri

Date	Very Poor	Poor	Fair	Good	Excellent
	(percent)	(percent)	(percent)	(percent)	(percent)
July 28, 2024	4	4	14	58	20
July 21, 2024	4	4	14	57	21
July 28, 2023	19	25	31	24	1

Soybeans Condition – Missouri

Date	Very Poor	Poor	Fair	Good	Excellent
	(percent)	(percent)	(percent)	(percent)	(percent)
July 28, 2024	3	4	18	60	15
July 21, 2024	2	4	15	65	14
July 28, 2023	13	21	38	25	3

Cotton Condition – Missouri

Date	Very Poor	Poor	Fair	Good	Excellent
	(percent)	(percent)	(percent)	(percent)	(percent)
July 28, 2024	3	8	29	60	-
July 21, 2024	3	8	28	61	-
July 28, 2023	-	3	27	66	4

- Represents zero.

Rice Condition – Missouri

Date	Very Poor	Poor	Fair	Good	Excellent
	(percent)	(percent)	(percent)	(percent)	(percent)
July 28, 2024	2	7	15	75	1
July 21, 2024	2	7	15	74	2
July 28, 2023	-	-	24	66	10

- Represents zero.

Pasture Condition – Missouri

Date	Very Poor	Poor	Fair	Good	Excellent
	(percent)	(percent)	(percent)	(percent)	(percent)
July 28, 2024	-	1	14	72	13
July 21, 2024	-	-	10	77	13
July 28, 2023	37	34	23	6	-

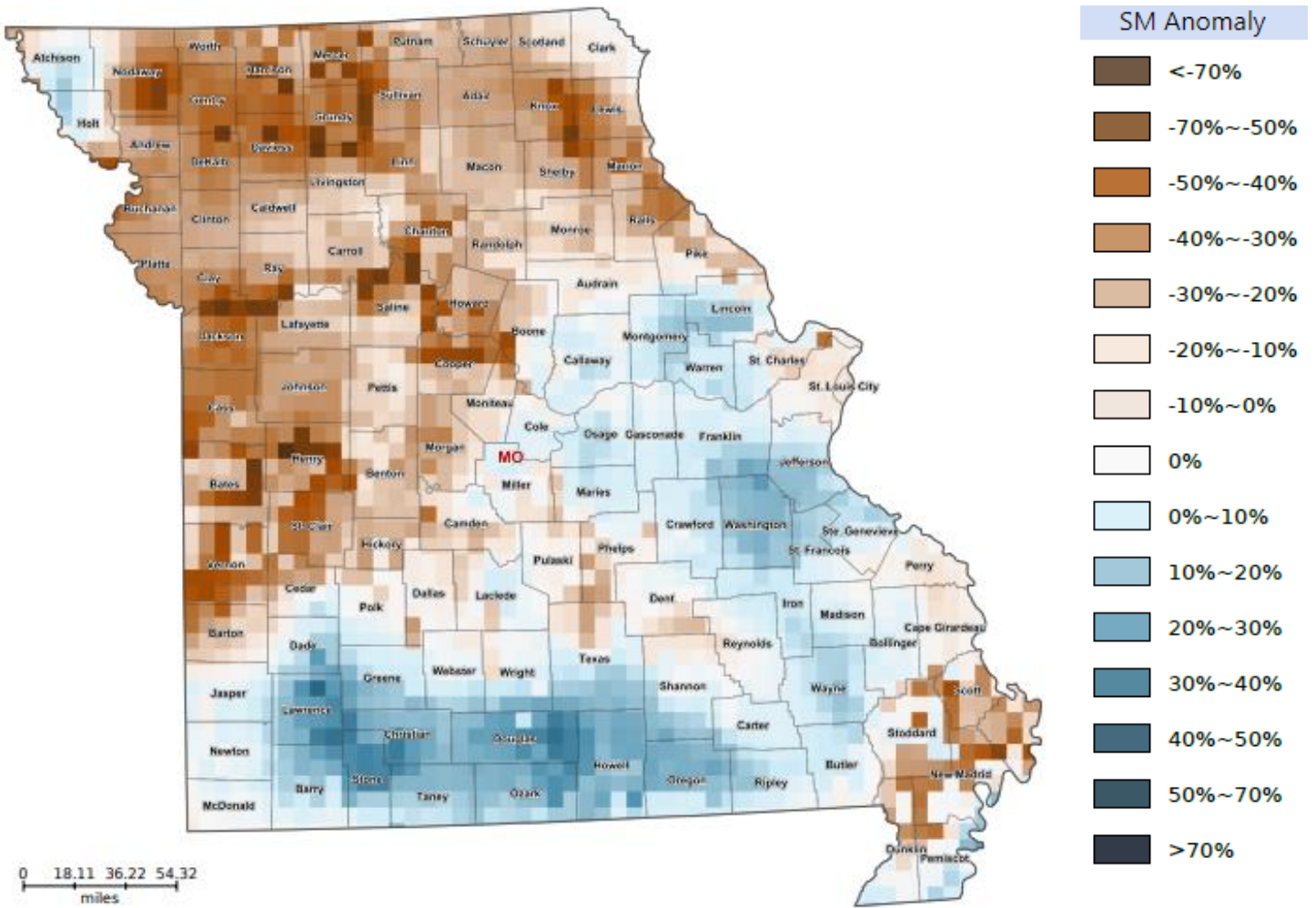
- Represents zero.

Supply of Hay and Other Roughages and Stock Water Supply: July 28, 2024

State	Supply of Hay and Other Roughages				Stock Water Supply			
	Very Short	Short	Adequate	Surplus	Very Short	Short	Adequate	Surplus
	(percent)	(percent)	(percent)	(percent)	(percent)	(percent)	(percent)	(percent)
Missouri	-	3	86	11	-	2	92	6

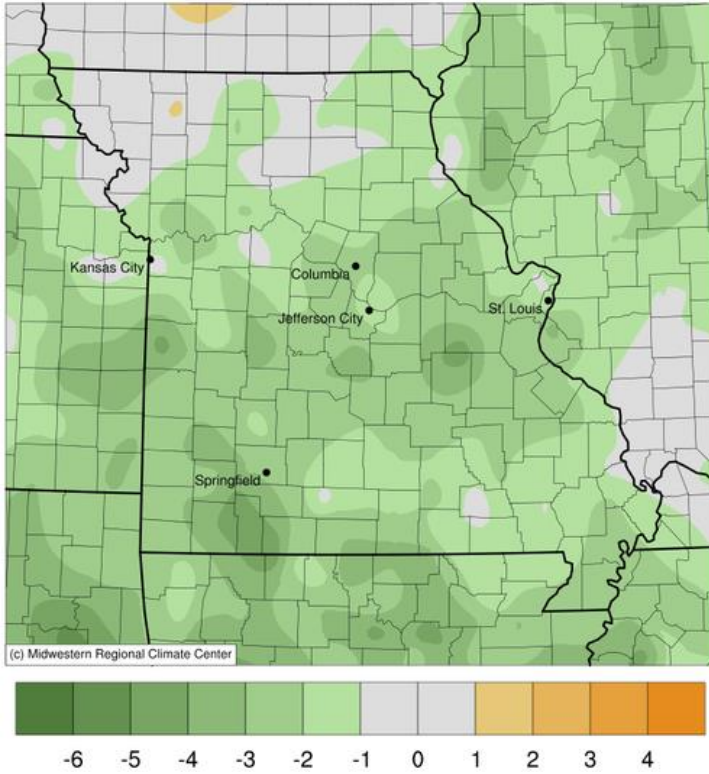
- Represents zero.

Soil Moisture Deviation from Historical Average – July 25th

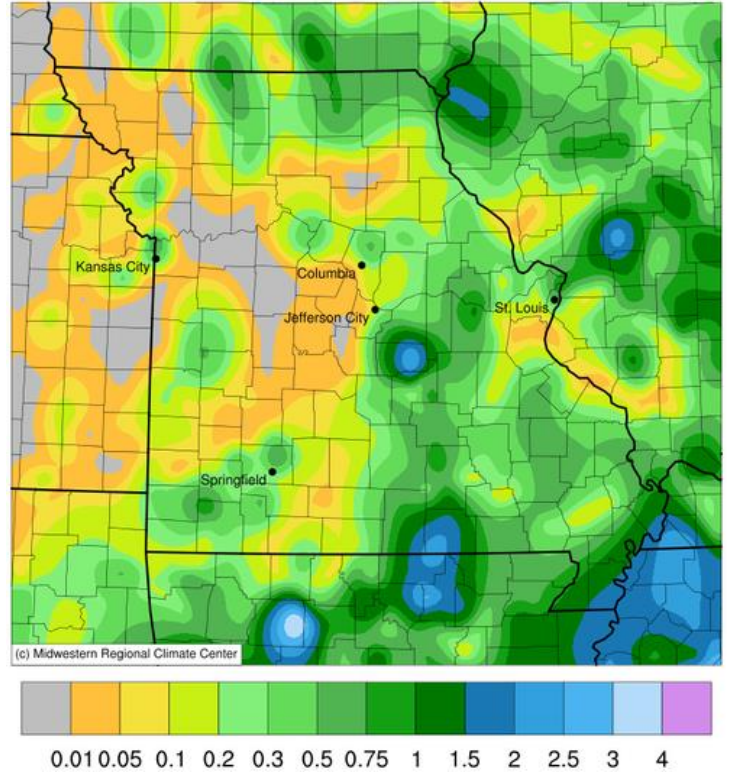


<https://cloud.csiss.gmu.edu/Crop-CASMA/>
(historical average includes 2015-current)

Average Temperature (°F): Departure from 1991-2020 Normals
July 22, 2024 to July 28, 2024



Accumulated Precipitation (in)
July 22, 2024 to July 28, 2024



Access to NASS Reports

For your convenience, you may access NASS reports and products the following ways:

- All reports are available electronically, at no cost, on the NASS web site: <http://www.nass.usda.gov>
- Both national and state specific reports are available via a free e-mail subscription. To set-up this free subscription, visit <http://www.nass.usda.gov> and in the “Follow NASS” box under “Receive reports by Email,” click on “National” or “State” to select the reports you would like to receive.
- Follow us on X @usda_nass

For more information on NASS surveys and reports, call the Heartland Regional Field Office at (314) 595-9594 or e-mail: nassrfohlr@usda.gov.