



Missouri Crop Progress and Condition

Released July 22, 2024

There were 5.5 days suitable for fieldwork in the week ending July 21, 2024. Statewide, the average temperature was 74.1 degrees, 4.5 degrees below normal. Precipitation averaged 0.89 inches, 0.10 inches above normal. Topsoil moisture supply was rated 5 percent short, 87 percent adequate, and 8 percent surplus. Subsoil moisture supply was rated 4 percent short, 90 percent adequate, and 6 percent surplus. Corn silking reached 87 percent, compared to the 5-year average 76 percent. Corn dough reached 51 percent, compared to the 5-year average of 24 percent. Corn condition was rated 4 percent very poor, 4 percent poor, 14 percent fair, 57 percent good, and 21 percent excellent. Soybeans blooming reached 57 percent, compared to the 5-year average of 45 percent. Soybeans setting pods reached 26 percent, compared to the 5-year average of 16 percent. Soybean condition was rated 2 percent very poor, 4 percent poor, 15 percent fair, 65 percent good, and 14 percent excellent. Cotton squaring reached 83 percent, compared to the 5-year average of 77 percent. Cotton setting bolls reached 18 percent, compared to the 5-year average of 28 percent. Cotton condition was rated 3 percent very poor, 8 percent poor, 28 percent fair, and 61 percent good. Rice headed reached 23 percent, compared to the 5-year average of 20 percent. Rice condition was rated 2 percent very poor, 7 percent poor, 15 percent fair, 74 percent good, and 2 percent excellent.

Days Suitable for Fieldwork and Soil Moisture Supply: Week Ending July 21, 2024

| State | Days Suitable for Fieldwork | Topsoil Moisture Supply | | | | Subsoil Moisture Supply | | | |
|----------------|-----------------------------|-------------------------|-----------|-----------|-----------|-------------------------|-----------|-----------|-----------|
| | | Very Short | Short | Adequate | Surplus | Very Short | Short | Adequate | Surplus |
| Missouri | 5.5 | (percent) | (percent) | (percent) | (percent) | (percent) | (percent) | (percent) | (percent) |
| | | - | 5 | 87 | 8 | - | 4 | 90 | 6 |

- Represents zero.

Crop Progress – Missouri

| Item | Week ending | | | 2019-2023 Average |
|-------------------------------|---------------|---------------|---------------|-------------------|
| | July 21, 2024 | July 14, 2024 | July 21, 2023 | |
| | (percent) | (percent) | (percent) | (percent) |
| Corn silking | 87 | 76 | 87 | 76 |
| Corn dough | 51 | 32 | 34 | 24 |
| Soybeans blooming | 57 | 47 | 65 | 45 |
| Soybeans setting pods | 26 | 17 | 28 | 16 |
| Cotton squaring | 83 | 73 | 93 | 77 |
| Cotton setting bolls | 18 | 8 | 21 | 28 |
| Rice headed | 23 | 12 | 36 | 20 |
| Alfalfa hay 2nd cutting | 80 | 65 | 89 | 82 |
| Alfalfa hay 3rd cutting | 12 | 2 | 18 | 11 |
| Other hay cut | 92 | 89 | 93 | 91 |

Corn Condition – Missouri

| Date | Very Poor | Poor | Fair | Good | Excellent |
|---------------------|-----------|-----------|-----------|-----------|-----------|
| | (percent) | (percent) | (percent) | (percent) | (percent) |
| July 21, 2024 | 4 | 4 | 14 | 57 | 21 |
| July 14, 2024 | 4 | 4 | 13 | 57 | 22 |
| July 21, 2023 | 17 | 22 | 34 | 25 | 2 |

Soybeans Condition – Missouri

| Date | Very Poor | Poor | Fair | Good | Excellent |
|---------------------|-----------|-----------|-----------|-----------|-----------|
| | (percent) | (percent) | (percent) | (percent) | (percent) |
| July 21, 2024 | 2 | 4 | 15 | 65 | 14 |
| July 14, 2024 | 2 | 5 | 17 | 61 | 15 |
| July 21, 2023 | 14 | 22 | 37 | 25 | 2 |

Cotton Condition – Missouri

| Date | Very Poor | Poor | Fair | Good | Excellent |
|---------------------|-----------|-----------|-----------|-----------|-----------|
| | (percent) | (percent) | (percent) | (percent) | (percent) |
| July 21, 2024 | 3 | 8 | 28 | 61 | - |
| July 14, 2024 | 3 | 9 | 28 | 60 | - |
| July 21, 2023 | - | 2 | 22 | 74 | 2 |

- Represents zero.

Rice Condition – Missouri

| Date | Very Poor | Poor | Fair | Good | Excellent |
|---------------------|-----------|-----------|-----------|-----------|-----------|
| | (percent) | (percent) | (percent) | (percent) | (percent) |
| July 21, 2024 | 2 | 7 | 15 | 74 | 2 |
| July 14, 2024 | 2 | 6 | 13 | 74 | 5 |
| July 21, 2023 | - | - | 21 | 66 | 13 |

- Represents zero.

Pasture Condition – Missouri

| Date | Very Poor | Poor | Fair | Good | Excellent |
|---------------------|-----------|-----------|-----------|-----------|-----------|
| | (percent) | (percent) | (percent) | (percent) | (percent) |
| July 21, 2024 | - | - | 10 | 77 | 13 |
| July 14, 2024 | - | 1 | 9 | 77 | 13 |
| July 21, 2023 | 25 | 34 | 30 | 11 | - |

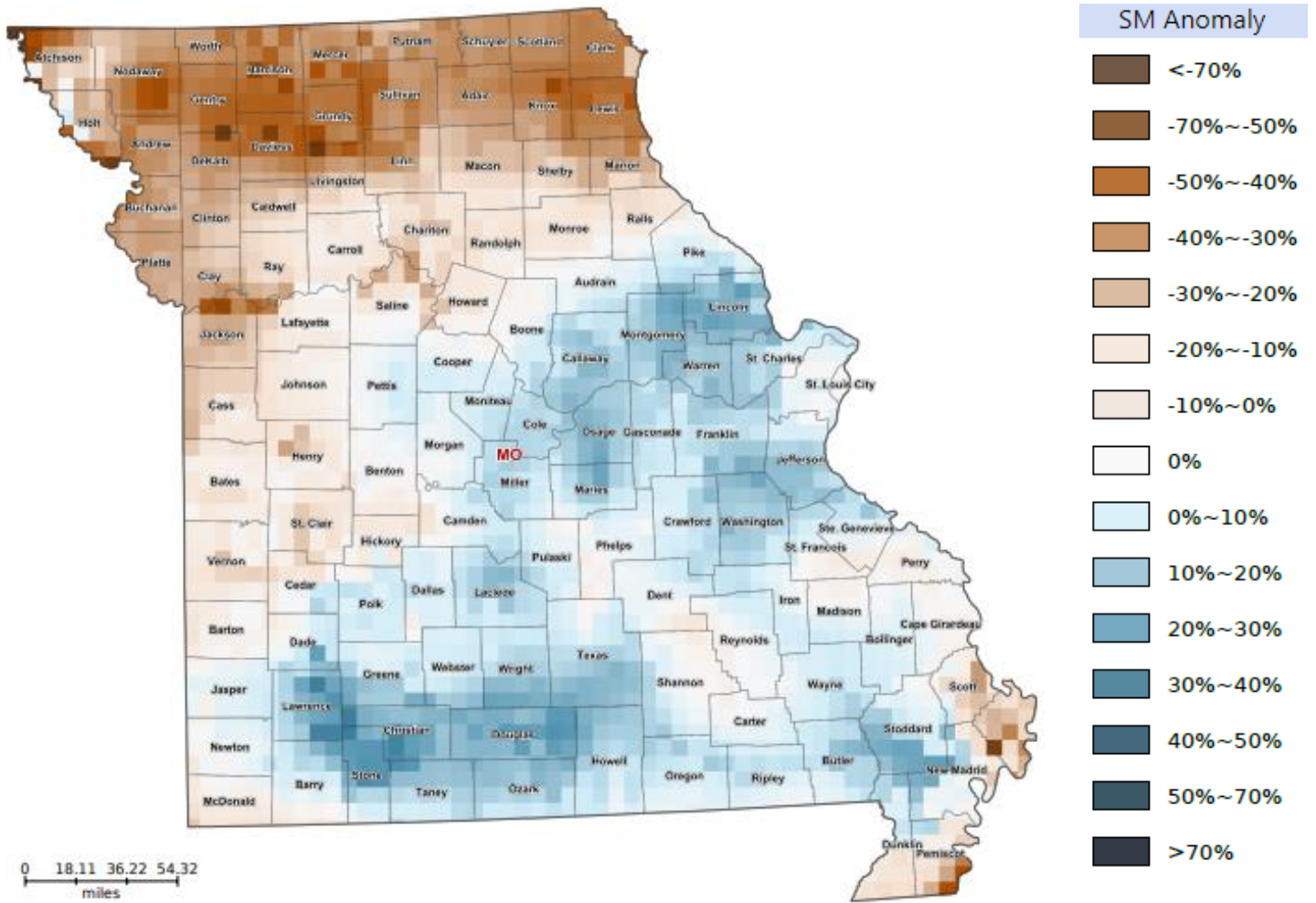
- Represents zero.

Supply of Hay and Other Roughages and Stock Water Supply: July 21, 2024

| State | Supply of Hay and Other Roughages | | | | Stock Water Supply | | | |
|----------------|-----------------------------------|-----------|-----------|-----------|--------------------|-----------|-----------|-----------|
| | Very Short | Short | Adequate | Surplus | Very Short | Short | Adequate | Surplus |
| | (percent) | (percent) | (percent) | (percent) | (percent) | (percent) | (percent) | (percent) |
| Missouri | - | 4 | 85 | 11 | - | 1 | 92 | 7 |

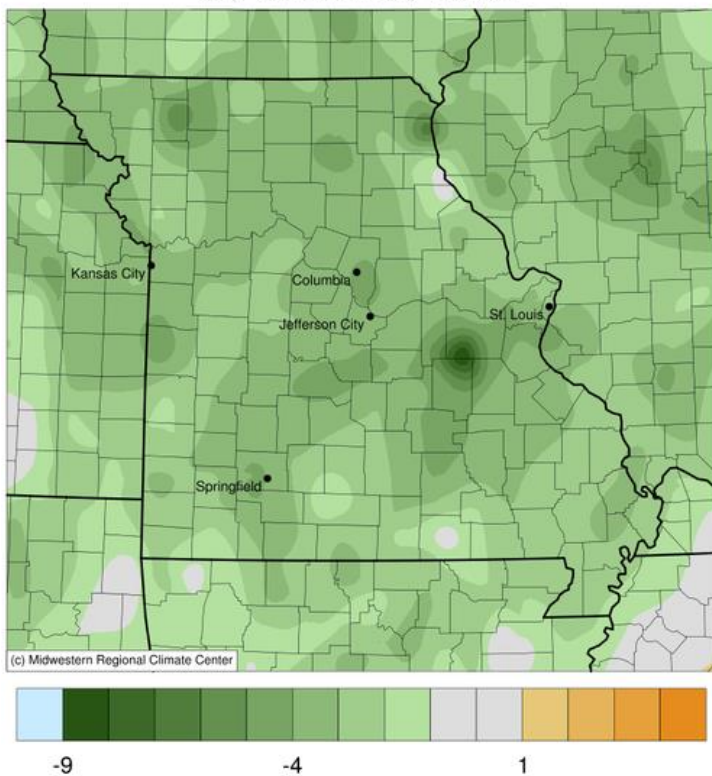
- Represents zero.

Soil Moisture Deviation from Historical Average – July 19th

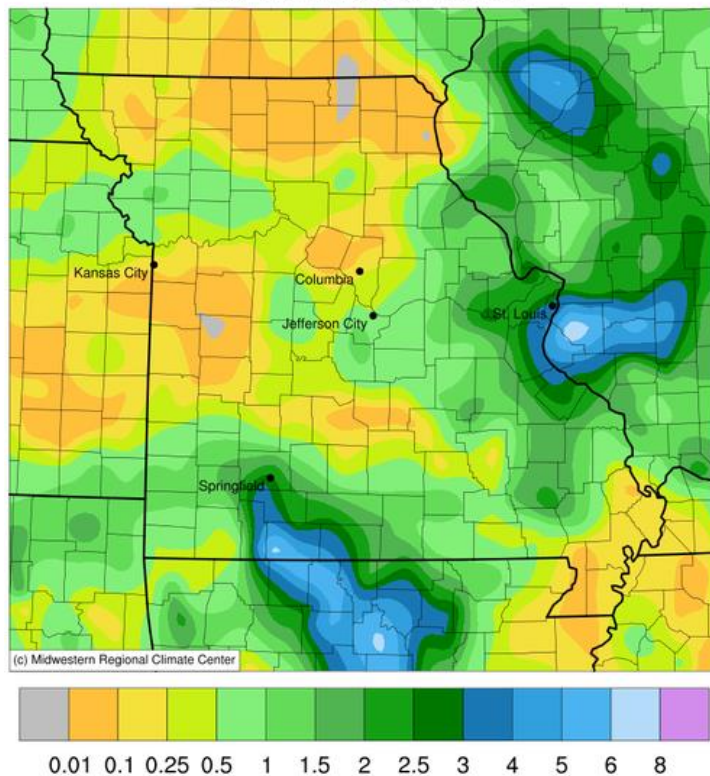


<https://cloud.csiss.gmu.edu/Crop-CASMA/>
(historical average includes 2015-current)

Average Temperature (°F): Departure from 1991-2020 Normals
July 15, 2024 to July 21, 2024



Accumulated Precipitation (in)
July 15, 2024 to July 21, 2024



Access to NASS Reports

For your convenience, you may access NASS reports and products the following ways:

- All reports are available electronically, at no cost, on the NASS web site: <http://www.nass.usda.gov>
- Both national and state specific reports are available via a free e-mail subscription. To set-up this free subscription, visit <http://www.nass.usda.gov> and in the “Follow NASS” box under “Receive reports by Email,” click on “National” or “State” to select the reports you would like to receive.
- Follow us on X @usda_nass

For more information on NASS surveys and reports, call the Heartland Regional Field Office at (314) 595-9594 or e-mail: nassrfohler@usda.gov.