



# Missouri Crop Progress and Condition

Released June 24, 2024

There were 6.1 days suitable for fieldwork in the week ending June 23, 2024. Statewide, the average temperature was 80.0 degrees, 5.5 degrees above normal. Precipitation averaged 0.32 inches, 0.70 inches below normal. Topsoil moisture supply was rated 2 percent very short, 22 percent short, 67 percent adequate, and 9 percent surplus. Subsoil moisture supply was rated 1 percent very short, 15 percent short, 75 percent adequate, and 9 percent surplus. Corn silking reached 13 percent, compared to the 5-year average of 2 percent. Corn condition was rated 2 percent very poor, 4 percent poor, 17 percent fair, 64 percent good, and 13 percent excellent. Soybeans planted reached 94 percent, compared to the 5-year average of 88 percent. Soybeans emerged reached 85 percent, compared to the 5-year average of 76 percent. Soybeans blooming reached 3 percent, compared to the 5-year average of 2 percent. Soybean condition was rated 2 percent very poor, 4 percent poor, 19 percent fair, 66 percent good, and 9 percent excellent. Cotton squaring reached 24 percent, compared to the 5-year average of 30 percent. Cotton condition was rated 3 percent very poor, 9 percent poor, 32 percent fair, and 56 percent good. Rice condition was rated 3 percent very poor, 8 percent poor, 17 percent fair, 71 percent good, and 1 percent excellent. Winter wheat harvested for grain reached 76 percent, compared to the 5-year average of 44 percent. Winter wheat condition was rated 1 percent very poor, 2 percent poor, 15 percent fair, 67 percent good, and 15 percent excellent.

## Days Suitable for Fieldwork and Soil Moisture Supply: Week Ending June 23, 2024

State	Days Suitable for Fieldwork	Topsoil Moisture Supply				Subsoil Moisture Supply			
		Very Short	Short	Adequate	Surplus	Very Short	Short	Adequate	Surplus
		(percent)	(percent)	(percent)	(percent)	(percent)	(percent)	(percent)	(percent)
Missouri .....	6.1	2	22	67	9	1	15	75	9

## Crop Progress – Missouri

Item	Week ending			2019-2023 Average
	June 23, 2024	June 16, 2024	June 23, 2023	
	(percent)	(percent)	(percent)	(percent)
Corn silking .....	13	1	2	2
Soybeans planted .....	94	86	99	88
Soybeans emerged .....	85	78	92	76
Soybeans blooming .....	3	(NA)	5	2
Cotton squaring .....	24	18	57	30
Winter wheat harvested .....	76	38	62	44
Alfalfa hay 1st cutting .....	92	87	94	89
Alfalfa hay 2nd cutting .....	13	1	23	12
Other hay cut .....	74	56	75	62

(NA) Not available.

### Corn Condition – Missouri

Date	Very Poor	Poor	Fair	Good	Excellent
	(percent)	(percent)	(percent)	(percent)	(percent)
June 23, 2024 .....	2	4	17	64	13
June 16, 2024 .....	3	4	18	65	10
June 23, 2023 .....	9	16	44	29	2

### Soybeans Condition – Missouri

Date	Very Poor	Poor	Fair	Good	Excellent
	(percent)	(percent)	(percent)	(percent)	(percent)
June 23, 2024 .....	2	4	19	66	9
June 16, 2024 .....	2	5	24	64	5
June 23, 2023 .....	8	19	41	30	2

### Cotton Condition – Missouri

Date	Very Poor	Poor	Fair	Good	Excellent
	(percent)	(percent)	(percent)	(percent)	(percent)
June 23, 2024 .....	3	9	32	56	-
June 16, 2024 .....	5	10	26	59	-
June 23, 2023 .....	2	3	31	63	1

- Represents zero.

### Rice Condition – Missouri

Date	Very Poor	Poor	Fair	Good	Excellent
	(percent)	(percent)	(percent)	(percent)	(percent)
June 23, 2024 .....	3	8	17	71	1
June 16, 2024 .....	3	7	15	70	5
June 23, 2023 .....	1	1	24	61	13

### Winter Wheat Condition – Missouri

Date	Very Poor	Poor	Fair	Good	Excellent
	(percent)	(percent)	(percent)	(percent)	(percent)
June 23, 2024 .....	1	2	15	67	15
June 16, 2024 .....	1	4	19	61	15
June 23, 2023 .....	1	5	34	48	12

### Pasture Condition – Missouri

Date	Very Poor	Poor	Fair	Good	Excellent
	(percent)	(percent)	(percent)	(percent)	(percent)
June 23, 2024 .....	-	1	17	76	6
June 16, 2024 .....	-	1	16	79	4
June 23, 2023 .....	13	55	26	6	-

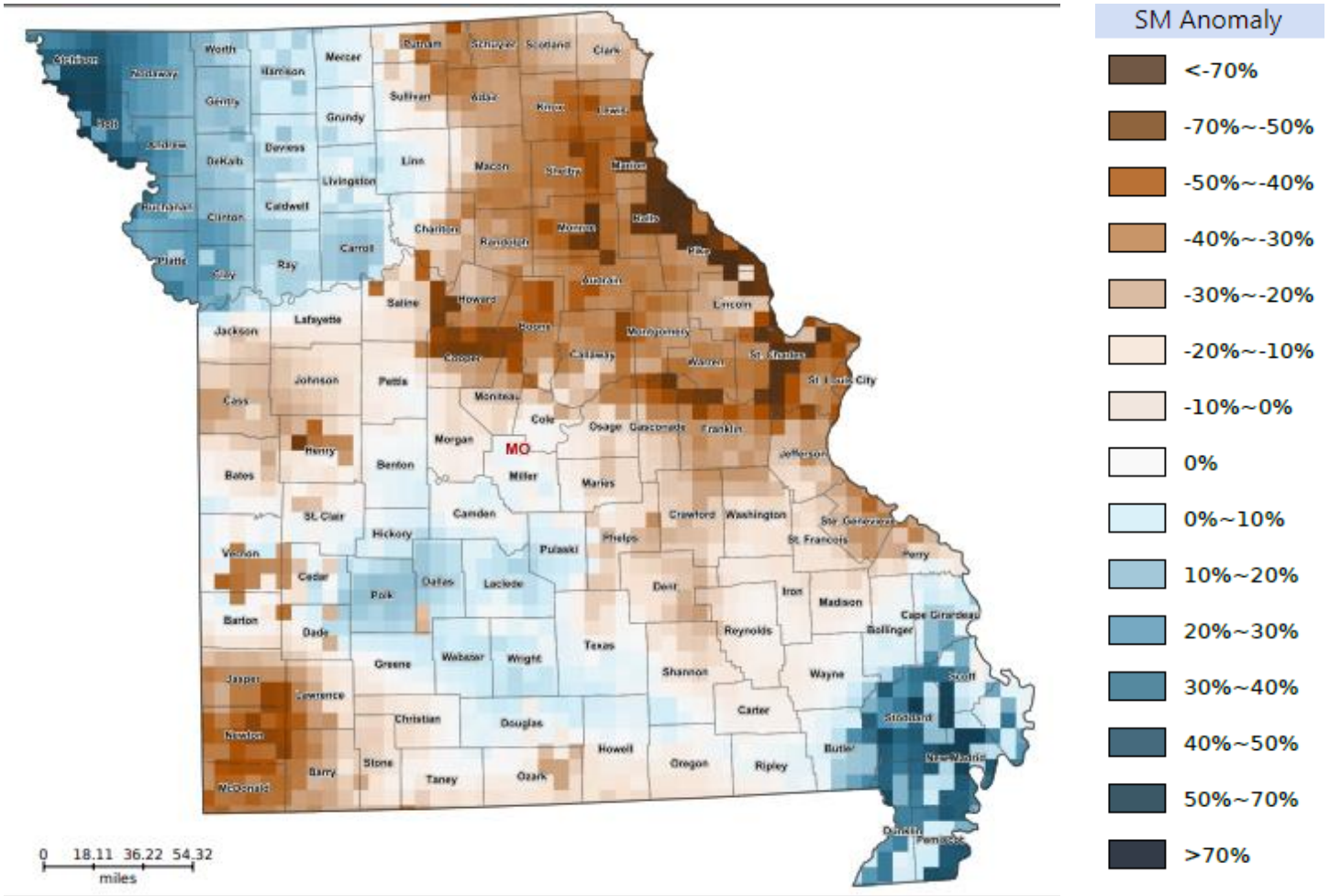
- Represents zero.

### Supply of Hay and Other Roughages and Stock Water Supply: June 23, 2024

State	Supply of Hay and Other Roughages				Stock Water Supply			
	Very Short	Short	Adequate	Surplus	Very Short	Short	Adequate	Surplus
	(percent)	(percent)	(percent)	(percent)	(percent)	(percent)	(percent)	(percent)
Missouri .....	-	9	86	5	-	4	93	3

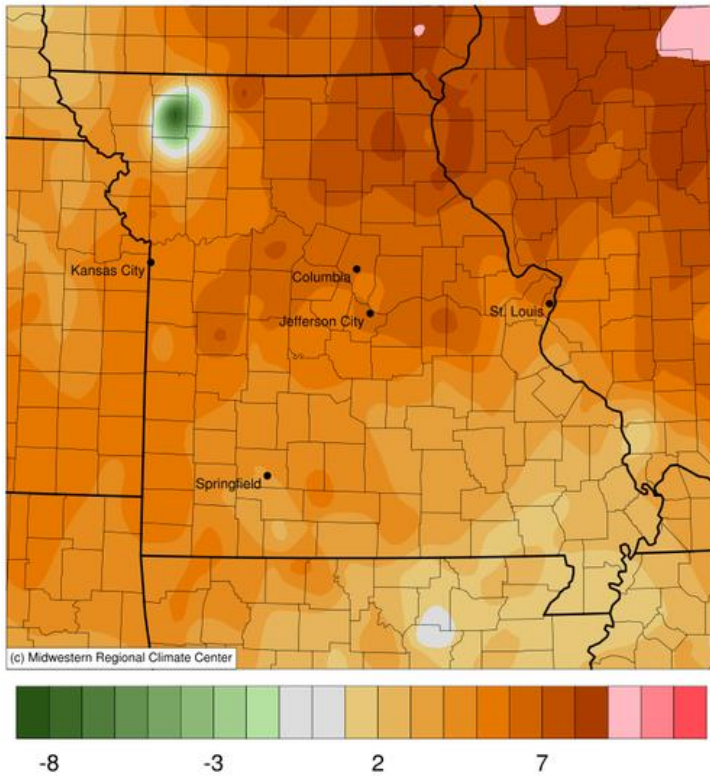
- Represents zero.

## Soil Moisture Deviation from Historical Average – June 20th

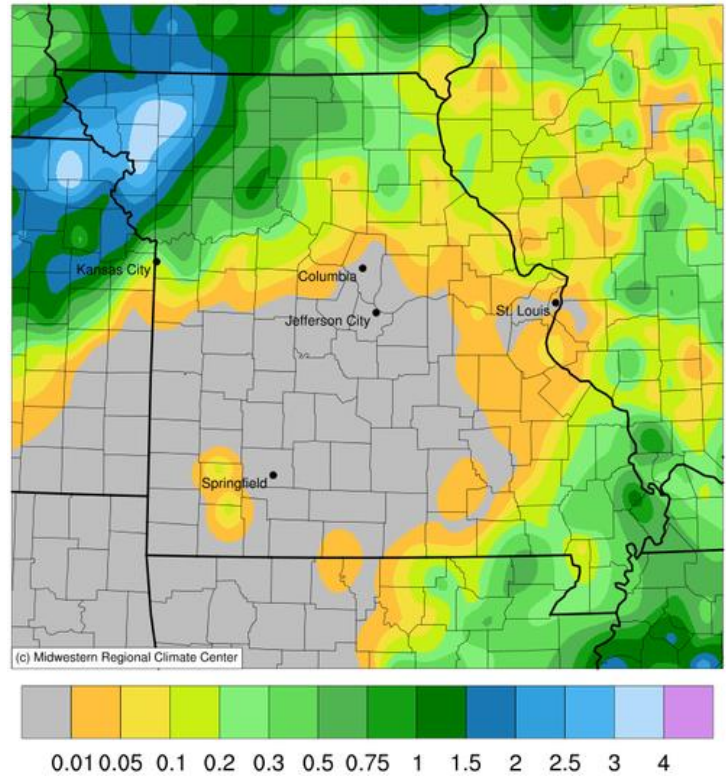


<https://cloud.csiss.gmu.edu/Crop-CASMA/>  
(historical average includes 2015-current)

**Average Temperature (°F): Departure from 1991-2020 Normals**  
June 17, 2024 to June 23, 2024



**Accumulated Precipitation (in)**  
June 17, 2024 to June 23, 2024



## Access to NASS Reports

For your convenience, you may access NASS reports and products the following ways:

- All reports are available electronically, at no cost, on the NASS web site: <http://www.nass.usda.gov>
- Both national and state specific reports are available via a free e-mail subscription. To set-up this free subscription, visit <http://www.nass.usda.gov> and in the “Follow NASS” box under “Receive reports by Email,” click on “National” or “State” to select the reports you would like to receive.
- Follow us on X @usda\_nass

For more information on NASS surveys and reports, call the Heartland Regional Field Office at (314) 595-9594 or e-mail: [nassrfohler@usda.gov](mailto:nassrfohler@usda.gov).