



Missouri Crop Progress and Condition

Released July 11, 2022

There were 5.3 days suitable for fieldwork during the week ending July 10, 2022. Temperatures last week averaged 81.9 degrees statewide, 4.1 degrees above normal. Precipitation averaged 1.04 inches, 0.20 inch above normal. Topsoil moisture supply was rated 13 percent very short, 34 percent short, 51 percent adequate and 2 percent surplus. Subsoil moisture supply was rated 8 percent very short, 36 percent short, 55 percent adequate and 1 percent surplus. Corn silking was 36 percent compared, to the 5-year average of 51 percent. Corn dough was at 2 percent, compared to the 5-year average of 1 percent. Corn condition was rated at 2 percent very poor, 6 percent poor, 32 percent fair, 50 percent good, and 10 percent excellent. Soybeans emerged was 95 percent, compared to the 5-year average of 92 percent. Soybeans blooming was 19 percent, compared to the 5-year average of 26 percent. Soybeans setting pods was at 3 percent, compared to the 5-year average of 5 percent. Soybean condition was rated at 2 percent very poor, 9 percent poor, 38 percent fair, 44 percent good, and 7 percent excellent. Cotton squaring was at 74 percent, compared to the 5-year average of 59 percent. Cotton setting bolls was at 32 percent, compared to the 5-year average of 15 percent. Cotton condition was rated at 7 percent very poor, 10 percent poor, 25 percent fair, and 58 percent good. Rice headed was at 7 percent, compared to the 5-year average of 8 percent. Rice condition was rated at 1 percent very poor, 6 percent poor, 28 percent fair, 52 percent good and 13 percent excellent. Winter wheat harvested for grain was at 98 percent, compared to the 5-year average of 91 percent.

Days Suitable for Fieldwork and Soil Moisture Supply: Week Ending July 10, 2022

State	Days Suitable for Fieldwork	Topsoil Moisture Supply				Subsoil Moisture Supply			
		Very Short	Short	Adequate	Surplus	Very Short	Short	Adequate	Surplus
Missouri	5.3	(percent) 13	(percent) 34	(percent) 51	(percent) 2	(percent) 8	(percent) 36	(percent) 55	(percent) 1

Crop Progress – Missouri

Item	Week ending			2017-2021 Average
	July 10, 2022	July 3, 2022	July 10, 2021	
	(percent)	(percent)	(percent)	(percent)
Corn silking	36	12	36	51
Corn dough	2	(NA)	2	1
Soybeans emerged	95	89	96	92
Soybeans blooming	19	9	19	26
Soybeans setting pods	3	(NA)	4	5
Cotton squaring	74	52	93	59
Cotton setting bolls	32	15	22	15
Rice headed	7	(NA)	3	8
Winter wheat harvested	98	88	85	91
Alfalfa hay 2nd cutting	61	39	47	63
Other hay cut	86	80	81	85

(NA) Not available.

Corn Condition – Missouri

Date	Very Poor	Poor	Fair	Good	Excellent
	(percent)	(percent)	(percent)	(percent)	(percent)
July 10, 2022	2	6	32	50	10
July 3, 2022	2	6	27	55	10
July 10, 2021	2	7	30	53	8

Soybeans Condition – Missouri

Date	Very Poor	Poor	Fair	Good	Excellent
	(percent)	(percent)	(percent)	(percent)	(percent)
July 10, 2022	2	9	38	44	7
July 3, 2022	3	7	34	49	7
July 10, 2021	2	6	36	51	5

Cotton Condition – Missouri

Date	Very Poor	Poor	Fair	Good	Excellent
	(percent)	(percent)	(percent)	(percent)	(percent)
July 10, 2022	7	10	25	58	-
July 3, 2022	8	11	18	63	-
July 10, 2021	-	7	24	69	-

- Represents zero.

Rice Condition – Missouri

Date	Very Poor	Poor	Fair	Good	Excellent
	(percent)	(percent)	(percent)	(percent)	(percent)
July 10, 2022	1	6	28	52	13
July 3, 2022	-	6	23	57	14
July 10, 2021	-	3	28	51	18

- Represents zero.

Pasture Condition – Missouri

Date	Very Poor	Poor	Fair	Good	Excellent
	(percent)	(percent)	(percent)	(percent)	(percent)
July 10, 2022	3	19	44	32	2
July 3, 2022	1	6	47	44	2
July 10, 2021	-	3	26	66	5

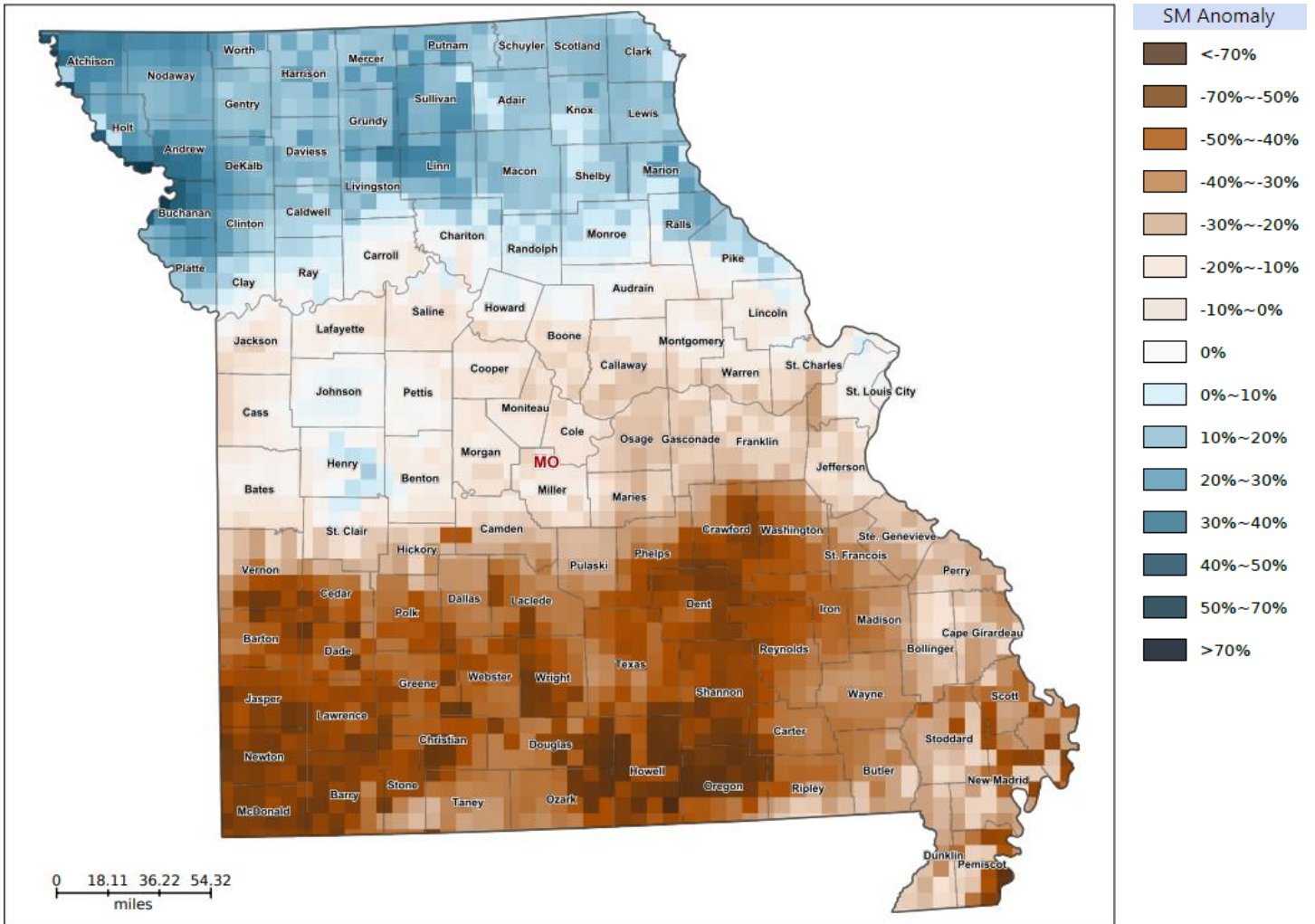
- Represents zero.

Supply of Hay and Other Roughages and Stock Water Supply: July 10, 2022

State	Supply of Hay and Other Roughages				Stock Water Supply			
	Very Short	Short	Adequate	Surplus	Very Short	Short	Adequate	Surplus
	(percent)	(percent)	(percent)	(percent)	(percent)	(percent)	(percent)	(percent)
Missouri	1	19	78	2	-	13	83	4

- Represents zero.

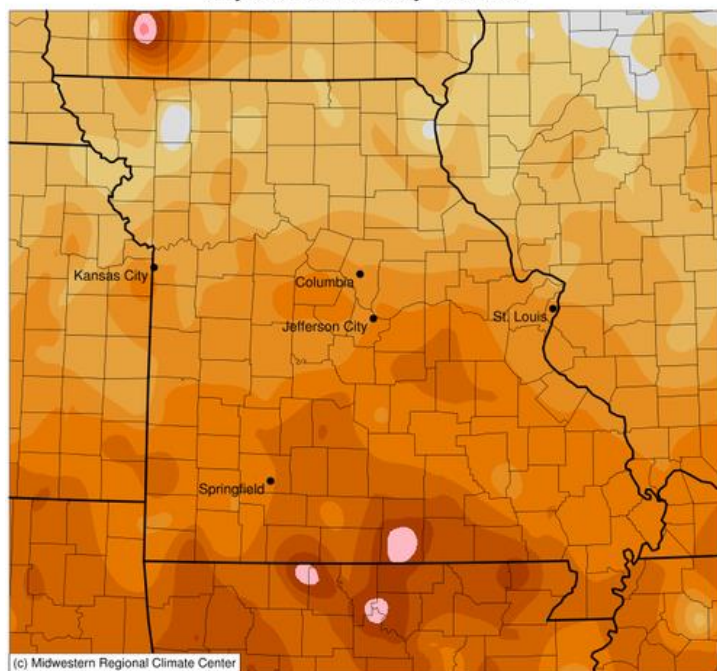
Soil Moisture Deviation from Historical Average – July 8



<https://cloud.csiss.gmu.edu/Crop-CASMA/>
 (historical average includes 2015-2020)

Average Temperature (°F): Departure from 1991-2020 Normals

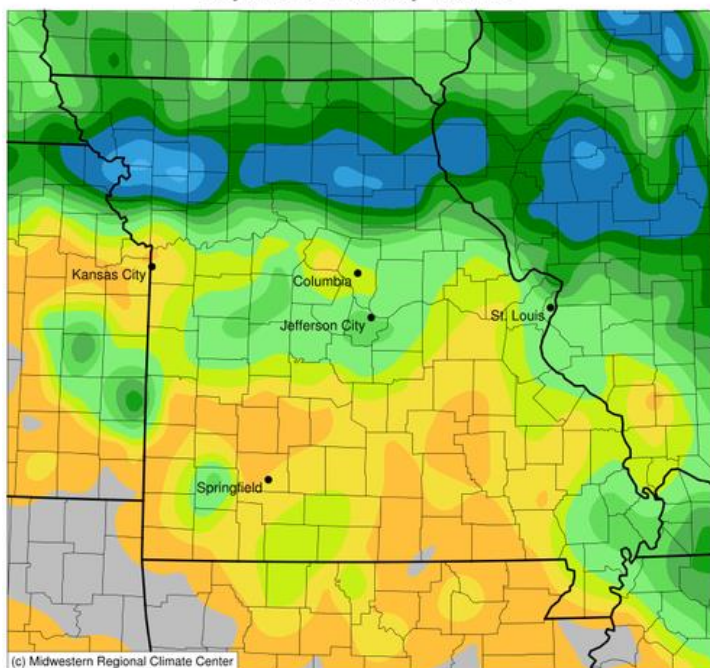
July 04, 2022 to July 10, 2022



(c) Midwestern Regional Climate Center

Accumulated Precipitation (in)

July 04, 2022 to July 10, 2022



(c) Midwestern Regional Climate Center

-1 4 9
Stations from the following networks used: WBAN, COOP, FAA, GHCN, ThreadEx, CoCoRaHS, WMO, ICAO, NWSLI, Missouri FSA, Missouri Mesonet, Midwestern Regional Climate Center
cli-MATE: MRCC Application Tools Environment
Generated at: 7/11/2022 10:04:15 AM CDT

0.01 0.1 0.25 0.5 1 1.5 2 2.5 3 4 5 6 8
Stations from the following networks used: WBAN, COOP, FAA, GHCN, ThreadEx, CoCoRaHS, WMO, ICAO, NWSLI, Missouri FSA, Missouri Mesonet, Midwestern Regional Climate Center
cli-MATE: MRCC Application Tools Environment
Generated at: 7/11/2022 10:05:44 AM CDT

Access to NASS Reports

For your convenience, you may access NASS reports and products the following ways:

- All reports are available electronically, at no cost, on the NASS web site: <http://www.nass.usda.gov>
- Both national and state specific reports are available via a free e-mail subscription. To set-up this free subscription, visit <http://www.nass.usda.gov> and in the "Follow NASS" box under "Receive reports by Email," click on "National" or "State" to select the reports you would like to receive.
- Follow us on Twitter @usda_nass

For more information on NASS surveys and reports, call the Heartland Regional Field Office at (314) 595-9594 or e-mail: nassrfohlr@usda.gov.