



# Crop Progress & Condition

## Kansas Agricultural Statistics

Cooperating with the Kansas Department of Agriculture

PO Box 3534 • Topeka KS 66601-3534 • (785)233-2230 • www.nass.usda.gov/ks • nass-ks@nass.usda.gov

Released: January 30, 2012

Volume 12 No. 05

For the month of January 2012

**Agricultural Summary:** Unusually warm, dry and windy January weather in Kansas has decreased soil moisture and winter wheat condition, however, the warm weather has aided livestock producers in a smooth start to the calving season and in stretching the hay and forage supply. Producers saw very little precipitation during the month as only 3 stations received over 0.20 inch; Concordia with 0.33 inch, Leavenworth with 0.26 inch, and Holton with 0.24 inch. Kansas farmers averaged 16.6 days suitable fieldwork for the month compared to 13 days a year ago. High temperatures ranged from 64 degrees to 74 degrees, while lows ranged from -1 degree in Oberlin to 18 degrees in Liberal. Average temperatures ranged from 31 to 40 degrees. January temperatures ranged from 4 degrees above normal at Clay Center to 11 degrees above normal at Topeka. Topsoil moisture supplies declined during the month to 13 percent very short, 33 percent short, 53 percent adequate, and 1 percent surplus. A year ago, topsoil moisture supplies were 24 percent very short, 35 percent short, 40 percent adequate, and 1 percent surplus. Farmers were busy with tillage, applying anhydrous ammonia and weed control, taking advantage of the mild weather conditions.

**Field Crop Report:** The lack of moisture during January decreased the **wheat** condition from December to 3 percent very poor, 9 percent poor, 39 percent fair, 42 percent good, and 7 percent excellent. A year ago, the condition of the crop was 14 percent very poor, 23 percent poor, 36 percent fair, 25 percent good, and 2 percent excellent. Wind damage increased slightly to 8 percent light and 2 percent moderate, while freeze damage was rated as 4 percent light and 96 percent with no damage.

**Feed Supplies Report:** The range and pasture condition was rated 29 percent very poor, 25 percent poor, 33 percent fair, and 13 percent good, which indicated a slight decrease from December. Feed grain supplies in Kansas

were rated at 11 percent very short, 17 percent short, 69 percent adequate, and 3 percent surplus, while hay and forage supplies were rated at 25 percent very short, 29 percent short, 43 percent adequate, and 3 percent surplus. The stock water supplies decreased to 12 percent very short, 24 percent short, 63 percent adequate, and 1 percent surplus. The warm, open weather has helped stretch hay and forage supplies.

### Kansas Wheat Conditions as of January 29, 2012

Crop	Very Poor	Poor	Fair	Good	Excellent
	Percent				
Winter Wheat	3	9	39	42	7
Range & Pasture	29	25	33	13	0

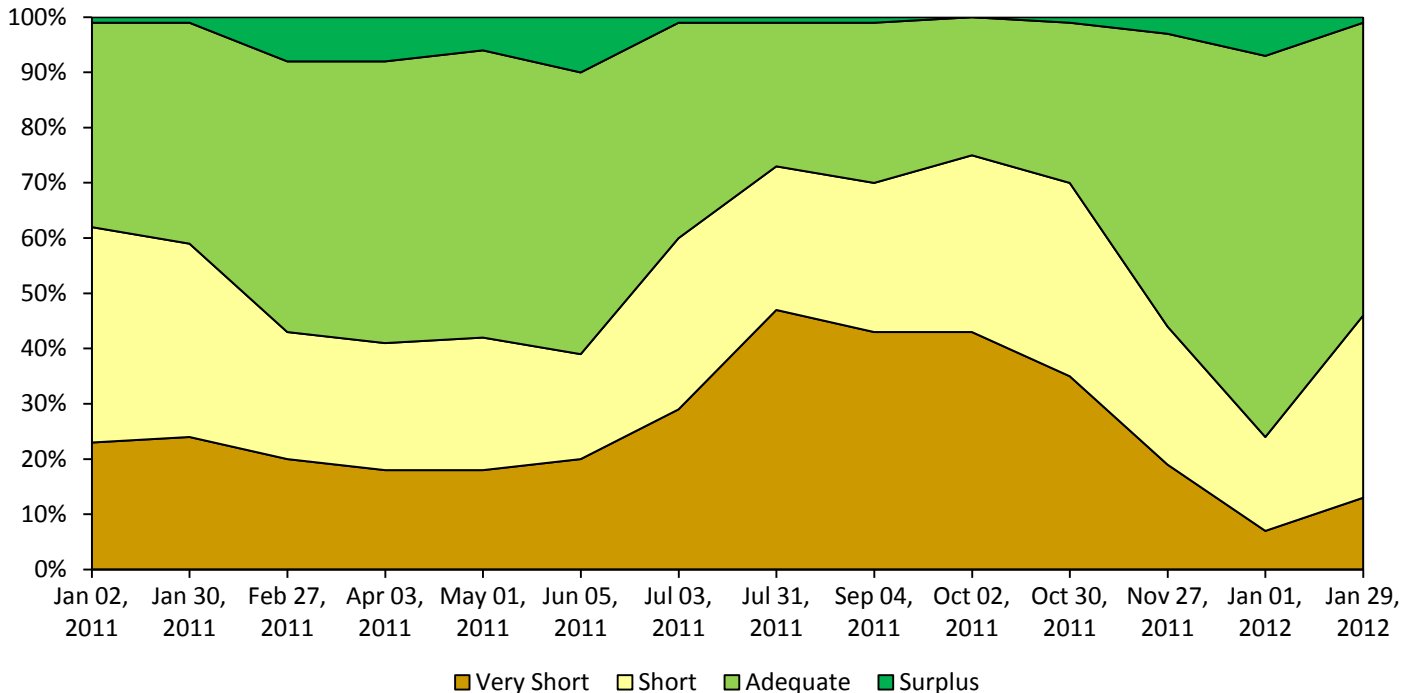
### Feed and Water Supplies as of January 29, 2012

Type	Very Short	Short	Adequate	Surplus
	Percent			
Feed Grain	11	17	69	3
Hay and Forage	25	29	43	3
Stock Water	12	24	63	1

### Wheat: Wind and Freeze Damage as of January 29, 2012

Type	None	Light	Moderate	Severe
	Percent			
Wind Damage	90	8	2	0
Freeze Damage	96	4	0	0

## Kansas Topsoil Moisture Monthly 2011 - 2012



**Temperature and Precipitation Data for January 2012**

Location	Monthly Temperatures				Precipitation (in.)				Days in Jan. with Temps. Below	
	Extremes		Avg.	DFN	January		Since Jan. 1, 2012		32° F	28° F
	High	Low			Total	DFN	Total	DFN		
<b>Northwest District</b>										
Colby	74	2	33	+8	0.00	-0.38	0.00	-0.38	29	28
Goodland	72	1	34	+7	0.05	-0.36	0.05	-0.36	27	26
Hill City	73	7	35	+9	0.07	-0.45	0.07	-0.45	27	22
McDonald	71	1	32	+6	0.08	-0.47	0.08	-0.47	29	28
Oberlin	73	-1	32	+6	0.13	-0.32	0.13	-0.32	29	29
<b>West Central District</b>										
Healy	65	10	34	+8	0.10	-0.44	0.10	-0.44	29	25
Quinter	69	7	33	+7	0.04	-0.48	0.04	-0.48	29	27
Russell Springs	69	7	34	+8	0.01	-0.39	0.01	-0.39	29	27
Tribune	67	8	34	+7	0.05	-0.38	0.05	-0.38	29	24
<b>Southwest District</b>										
Ashland	68	8	36	+7	0.04	-0.46	0.04	-0.46	29	28
Dodge City	66	12	37	+8	0.07	-0.51	0.07	-0.51	27	19
Elkhart	66	16	38	+7	0.00	-0.52	0.00	-0.52	24	22
Garden City	64	12	34	+7	0.00	-0.41	0.00	-0.41	29	26
Johnson	64	16	36	+6	0.01	-0.22	0.01	-0.22	29	24
Liberal	72	18	39	+8	0.11	-0.41	0.11	-0.41	24	24
<b>North Central District</b>										
Alton	71	7	32	+7	0.06	-0.50	0.06	-0.50	29	28
Belleville	65	6	31	+6	0.13	-0.53	0.13	-0.53	29	28
Beloit	68	7	33	+6	0.12	-0.55	0.12	-0.55	29	26
Clay Center	65	6	32	+4	0.06	-0.70	0.06	-0.70	29	27
Concordia	66	6	34	+8	0.33	-0.29	0.33	-0.29	25	19
Phillipsburg	69	7	32	+8	0.15	-0.23	0.15	-0.23	29	28
<b>Central District</b>										
Ellsworth	68	9	34	+9	0.14	-0.54	0.14	-0.54	29	26
Great Bend	64	10	35	+5	0.00	-0.67	0.00	-0.67	28	25
Hays	71	8	34	+7	0.03	-0.47	0.03	-0.47	29	27
Herington	66	4	33	+7	0.00	-0.93	0.00	-0.93	28	27
McPherson	68	8	35	+7	0.16	-0.54	0.16	-0.54	28	26
Salina	70	9	35	+7	0.15	-0.59	0.15	-0.59	29	23
<b>South Central District</b>										
Anthony	66	14	38	+8	0.04	-0.91	0.04	-0.91	27	22
Hutchinson	70	8	37	+9	0.08	-0.56	0.08	-0.56	24	21
Medicine Lodge	68	11	39	+9	0.12	-0.56	0.12	-0.56	24	19
Newton	66	10	37	+9	0.04	-0.70	0.04	-0.70	22	18
Pratt	69	12	36	+6	0.16	-0.46	0.16	-0.46	27	24
Wichita	66	11	39	+9	0.03	-0.77	0.03	-0.77	25	18
Wilmore	69	6	35	+6	0.00	-0.59	0.00	-0.59	29	28
<b>Northeast District</b>										
Holton	66	5	32	+7	0.24	-0.67	0.24	-0.67	28	25
Horton	65	7	32	+6	0.07	-0.77	0.07	-0.77	29	28
Leavenworth	65	8	33	+7	0.26	-0.75	0.26	-0.75	28	25
Manhattan	66	8	34	+7	0.02	-0.80	0.02	-0.80	26	24
Valley Falls	66	9	34	+8	0.13	-0.87	0.13	-0.87	27	24
<b>East Central District</b>										
Emporia	68	7	37	+10	0.00	-0.89	0.00	-0.89	22	21
Eskridge	66	7	33	+9	0.02	-0.81	0.02	-0.81	27	23
Garnett	67	9	36	+6	0.08	-1.19	0.08	-1.19	23	21
Lawrence	66	8	35	+6	0.02	-1.17	0.02	-1.17	27	22
Ottawa	67	8	35	+5	0.05	-1.15	0.05	-1.15	27	24
Tallgrass Prairie	69	5	34	+8	0.00	-0.91	0.00	-0.91	28	25
Topeka	70	9	37	+11	0.05	-0.85	0.05	-0.85	24	23
<b>Southeast District</b>										
Columbus	70	15	39	+8	0.07	-1.39	0.07	-1.39	22	20
Howard	66	11	38	+8	0.12	-0.81	0.12	-0.81	27	20
Iola	67	10	37	+8	0.00	-1.28	0.00	-1.28	26	21
Parsons	69	11	37	+8	0.05	-1.22	0.05	-1.22	25	21
Pittsburg	70	15	39	+9	0.02	-1.52	0.02	-1.52	23	18
Winfield-Arkansas City	69	14	40	+10	0.01	-1.08	0.01	-1.08	23	19

Source: Agricultural Weather Information Service, Inc. © 2011 based on NWS data. DFN = Departure From Normal (1970-2000).

NASS provides accurate, timely, useful and objective statistics in service to U.S. agriculture. The Agency invites you to express your thoughts and provide occasional feedback on our products and services by joining a data user community. To join, sign in at <http://usda.mannlib.cornell.edu/subscriptions> and look for "NASS Data User Community."