



Iowa Ag News – Cattle on Feed

Iowa Field Office · 210 Walnut Street Ste 833 · Des Moines IA 50309 · (515) 776-3400 · (800) 772-0825
fax (855) 271-9802 · www.nass.usda.gov/ia

Cooperating with the Iowa Department of Agriculture and Land Stewardship

April 19, 2024 - For Immediate Release

Media Contact: Greg Thessen

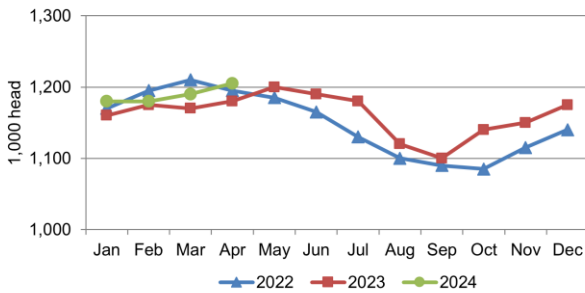
Cattle and calves on feed for the slaughter market in Iowa feedlots with a capacity of 1,000 or more head totaled 660,000 head on April 1, 2024, according to the latest USDA, National Agricultural Statistics Service – *Cattle on Feed* report. This was up 2 percent from March and up 3 percent from April 1, 2023. Iowa feedlots with a capacity of less than 1,000 head had 545,000 head on feed, up 1 percent from last month and up 1 percent from last year. Cattle and calves on feed for the slaughter market in all Iowa feedlots totaled 1,205,000 head, up 1 percent from last month and up 2 percent from last year.

Placements of cattle and calves in Iowa feedlots with a capacity of 1,000 or more head during March 2024 totaled 105,000 head, down 11 percent from February and down 4 percent from March 2023. Feedlots with a capacity of less than 1,000 head placed 54,000 head, down 4 percent from February but up 4 percent from March 2023. Placements for all feedlots in Iowa totaled 159,000 head, down 9 percent from February and down 1 percent from March 2023.

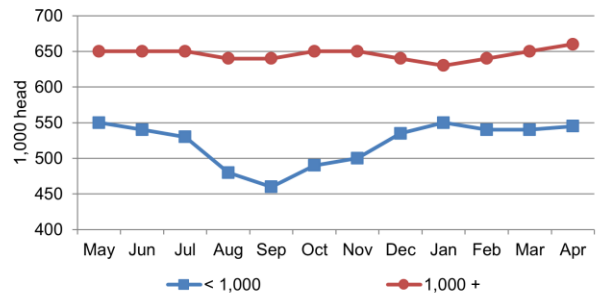
Marketings of fed cattle from Iowa feedlots with a capacity of 1,000 or more head during March 2024 totaled 93,000 head, down 12 percent from February and down 13 percent from March 2023. Feedlots with a capacity of less than 1,000 head marketed 47,000 head, down 13 percent from February but up 18 percent from March 2023. Marketings for all feedlots in Iowa were 140,000 head, down 13 percent from February and down 5 percent from March 2023. **Other disappearance** from all feedlots in Iowa totaled 4,000 head.

Note: This report is a combination of estimates from the USDA Cattle on Feed survey for Iowa feedlots with a capacity of 1,000 or more head and the Iowa Department of Agriculture and Land Stewardship-funded Cattle on Feed survey for Iowa feedlots with a capacity of less than 1,000 head.

**Cattle on Feed, Inventory in all Feedlots
Iowa: 2022-2024**



**Cattle on Feed, Inventory by Feedlot Capacity
Iowa: Past 12 Months**



All Cattle on Feed – Iowa

Item	Feedlots 1,000+ capacity (1,000 head)	Feedlots less than 1,000 capacity (1,000 head)	All feedlots (1,000 head)
Cattle on feed ¹ , March 1, 2024	650	540	1,190
March placements	105	54	159
March marketings	93	47	140
March other disappearance ²	2	2	4
Cattle on feed, April 1, 2024	660	545	1,205

¹ Cattle and calves on feed are steers and heifers being fed a ration of grain, silage, hay and/or protein supplement for slaughter market that are expected to produce a carcass that will grade select or better. It excludes cattle being "backgrounded only" for later sale as feeders or later placement in another feedlot.
² Includes death loss, movement from feedlots to pasture, and shipments to other feedlots for further feeding.

Cattle on Feed, Placements, Marketings, and Other Disappearance by Month, 1,000+ Capacity Feedlots – Selected States and United States: 2023-2024

State	Cattle on Feed ¹ April 1			Placements during March			Marketings during March			Other disappearance ² during March		
	2023	2024	'24 as % of '23	2023	2024	'24 as % of '23	2023	2024	'24 as % of '23	2023	2024	'24 as % of '23
	(1,000) (head)	(1,000) (head)	(percent)	(1,000) (head)	(1,000) (head)	(percent)	(1,000) (head)	(1,000) (head)	(percent)	(1,000) (head)	(1,000) (head)	(percent)
Arizona	257	256	100	28	22	79	30	23	77	1	1	100
California	525	530	101	73	65	89	61	49	80	7	6	86
Colorado	980	990	101	155	135	87	180	160	89	5	5	100
Idaho	320	345	108	37	36	97	41	35	85	1	1	100
Iowa	640	660	103	109	105	96	107	93	87	2	2	100
Kansas	2,430	2,400	99	460	400	87	480	390	81	10	10	100
Minnesota	95	105	111	15	14	93	14	13	93	1	1	100
Nebraska	2,530	2,540	100	480	450	94	470	460	98	10	10	100
Oklahoma	260	330	127	43	41	95	52	40	77	1	1	100
South Dakota ..	220	250	114	44	40	91	37	33	89	2	2	100
Texas	2,810	2,840	101	455	365	80	415	330	80	10	15	150
Washington	255	245	96	40	29	73	39	38	97	1	1	100
Other States	325	330	102	53	44	83	51	42	82	2	2	100
United States ..	11,647	11,821	101	1,992	1,746	88	1,977	1,706	86	53	57	108

¹ Cattle and calves on feed are steers and heifers being fed a ration of grain, silage, hay and/or protein supplement for slaughter market that are expected to produce a carcass that will grade select or better. It excludes cattle being "backgrounded only" for later sale as feeders or later placement in another feedlot.

² Includes death loss, movement from feedlots to pasture, and shipments to other feedlots for further feeding.

Cattle on Feed: Number on Feed by Class, 1,000+ Capacity Feedlots by Quarter – States and United States: 2023-2024

State	Steers & Steer Calves			Heifers & Heifer Calves		
	April 1, 2023	January 1, 2024	April 1, 2024	April 1, 2023	January 1, 2024	April 1, 2024
	(1,000 Head)	(1,000 Head)	(1,000 Head)	(1,000 Head)	(1,000 Head)	(1,000 Head)
Arizona	247	250	246	10	15	10
California	440	415	435	85	105	95
Colorado	545	540	530	435	480	460
Idaho	175	180	195	145	155	150
Iowa	485	475	510	155	155	150
Kansas	1,330	1,380	1,340	1,100	1,100	1,060
Minnesota	80	85	90	15	20	15
Nebraska	1,650	1,590	1,660	880	970	880
Oklahoma	145	195	185	115	140	145
South Dakota	135	135	155	85	95	95
Texas	1,560	1,610	1,570	1,250	1,250	1,270
Washington	140	145	135	115	125	110
Other States	210	195	215	115	125	115
United States	7,142	7,195	7,266	4,505	4,735	4,555

UNITED STATES CATTLE ON FEED

Cattle and calves on feed for the slaughter market in the United States for feedlots with capacity of 1,000 or more head totaled 11.8 million head on April 1, 2024. The inventory was 1 percent above April 1, 2023. The inventory included 7.27 million steers and steer calves, up 2 percent from the previous year. This group accounted for 61 percent of the total inventory. Heifers and heifer calves accounted for 4.56 million head, up 1 percent from 2023.

Placements in feedlots during March totaled 1.75 million head, 12 percent below 2023. Net placements were 1.69 million head. During March, placements of cattle and calves weighing less than 600 pounds were 330,000 head, 600-699 pounds were 260,000 head, 700-799 pounds were 460,000 head, 800-899 pounds were 466,000 head, 900-999 pounds were 170,000 head, and 1,000 pounds and greater were 60,000 head.

Marketings of fed cattle during March totaled 1.71 million head, 14 percent below 2023.

Other disappearance totaled 57,000 head during March, 8 percent above 2023.

The complete report can be found on the USDA NASS website at www.nass.usda.gov/Publications.