



Iowa Ag News – Cattle on Feed

Iowa Field Office · 210 Walnut Street Ste 833 · Des Moines IA 50309 · (515) 776-3400 · (800) 772-0825
fax (855) 271-9802 · www.nass.usda.gov/ia

Cooperating with the Iowa Department of Agriculture and Land Stewardship

January 31, 2024 - For Immediate Release

Media Contact: Greg Thessen

Cattle and calves on feed for the slaughter market in Iowa feedlots with a capacity of 1,000 or more head totaled 630,000 head on January 1, 2024, according to the latest USDA, National Agricultural Statistics Service – *Cattle on Feed* report. This was down 2 percent from December but up 2 percent from January 1, 2023. Iowa feedlots with a capacity of less than 1,000 head had 550,000 head on feed, up 3 percent from last month and up 4 percent from last year. Cattle and calves on feed for the slaughter market in all Iowa feedlots totaled 1,180,000 head, up slightly from last month and up 3 percent from last year.

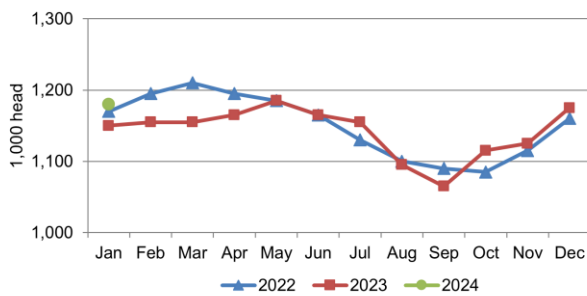
Placements of cattle and calves in Iowa feedlots with a capacity of 1,000 or more head during December 2023 totaled 83,000 head, down 6 percent from November and down 1 percent from December 2022. Feedlots with a capacity of less than 1,000 head placed 55,000 head, down 27 percent from November but up 10 percent from December 2022. Placements for all feedlots in Iowa totaled 138,000 head, down 15 percent from November but up 3 percent from December 2022.

Marketings of fed cattle from Iowa feedlots with a capacity of 1,000 or more head during December 2023 totaled 92,000 head, down 5 percent from November but unchanged from December 2022. Feedlots with a capacity of less than 1,000 head marketed 34,000 head, down 37 percent from November and down 28 percent from December 2022. Marketings for all feedlots in Iowa were 126,000 head, down 17 percent from November and down 9 percent from December 2022.

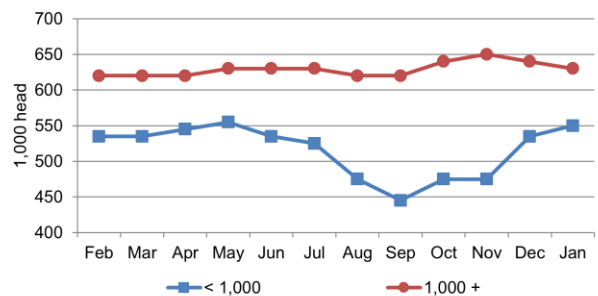
Other disappearance from all feedlots in Iowa totaled 7,000 head.

Note: This report is a combination of estimates from the USDA Cattle on Feed survey for Iowa feedlots with a capacity of 1,000 or more head and the Iowa Department of Agriculture and Land Stewardship-funded Cattle on Feed survey for Iowa feedlots with a capacity of less than 1,000 head.

**Cattle on Feed, Inventory in all Feedlots
Iowa: 2022-2024**



**Cattle on Feed, Inventory by Feedlot Capacity
Iowa: Past 12 Months**



All Cattle on Feed – Iowa

Item	Feedlots 1,000+ capacity (1,000 head)	Feedlots less than 1,000 capacity (1,000 head)	All feedlots (1,000 head)
Cattle on feed ¹ , December 1, 2023	640	535	1,175
December placements	83	55	138
December marketings	92	34	126
December other disappearance ²	1	6	7
Cattle on feed, January 1, 2024	630	550	1,180

¹ Cattle and calves on feed are steers and heifers being fed a ration of grain, silage, hay and/or protein supplement for slaughter market that are expected to produce a carcass that will grade select or better. It excludes cattle being "backgrounded only" for later sale as feeders or later placement in another feedlot.

² Includes death loss, movement from feedlots to pasture, and shipments to other feedlots for further feeding.

Cattle on Feed, Placements, Marketings, and Other Disappearance by Month, 1,000+ Capacity Feedlots – Selected States and United States: 2023-2024

State	Cattle on Feed ¹ January 1			Placements during December			Marketings during December			Other disappearance ² during December		
	2023	2024	'24 as % of '23	2022	2023	'23 as % of '22	2022	2023	'23 as % of '22	2022	2023	'23 as % of '22
	(1,000) (head)	(1,000) (head)	(percent)	(1,000) (head)	(1,000) (head)	(percent)	(1,000) (head)	(1,000) (head)	(percent)	(1,000) (head)	(1,000) (head)	(percent)
Arizona	267	265	99	24	20	83	24	20	83	1	1	100
California	515	520	101	69	78	113	53	62	117	6	6	100
Colorado	1,040	1,020	98	145	135	93	140	140	100	5	5	100
Idaho	320	335	105	46	50	109	40	39	98	1	1	100
Iowa	620	630	102	84	83	99	92	92	100	2	1	50
Kansas	2,390	2,480	104	435	395	91	365	405	111	10	10	100
Minnesota	95	105	111	13	16	123	12	10	83	1	1	100
Nebraska	2,600	2,560	98	470	435	93	470	440	94	10	15	150
Oklahoma	275	335	122	35	43	123	39	32	82	1	1	100
South Dakota ..	210	230	110	34	37	109	40	35	88	4	2	50
Texas	2,770	2,860	103	350	330	94	380	365	96	10	15	150
Washington	265	270	102	37	38	103	41	37	90	1	1	100
Other States	315	320	102	42	44	105	45	48	107	2	1	50
United States ..	11,682	11,930	102	1,784	1,704	96	1,741	1,725	99	54	60	111

¹ Cattle and calves on feed are steers and heifers being fed a ration of grain, silage, hay and/or protein supplement for slaughter market that are expected to produce a carcass that will grade select or better. It excludes cattle being "backgrounded only" for later sale as feeders or later placement in another feedlot.

² Includes death loss, movement from feedlots to pasture, and shipments to other feedlots for further feeding.

Cattle on Feed: Number on Feed by Class, 1,000+ Capacity Feedlots by Quarter – States and United States: 2023-2024

State	Steers & Steer Calves			Heifers & Heifer Calves		
	January 1, 2023	October 1, 2023	January 1, 2024	January 1, 2023	October 1, 2023	January 1, 2024
	(1,000 Head)	(1,000 Head)	(1,000 Head)	(1,000 Head)	(1,000 Head)	(1,000 Head)
Arizona	257	240	250	10	10	15
California	435	405	415	80	100	105
Colorado	580	530	540	460	460	480
Idaho	165	165	180	155	130	155
Iowa	465	470	475	155	170	155
Kansas	1,270	1,350	1,380	1,120	1,150	1,100
Minnesota	80	80	85	15	15	20
Nebraska	1,600	1,490	1,590	1,000	930	970
Oklahoma	150	155	195	125	135	140
South Dakota	125	105	135	85	80	95
Texas	1,560	1,630	1,610	1,210	1,220	1,250
Washington	150	135	145	115	120	125
Other States	195	190	195	120	115	125
United States	7,032	6,945	7,195	4,650	4,635	4,735

UNITED STATES CATTLE ON FEED

Cattle and calves on feed for the slaughter market in the United States for feedlots with capacity of 1,000 or more head totaled 11.9 million head on January 1, 2024. The inventory was 2 percent above January 1, 2023. The inventory included 7.20 million steers and steer calves, up 2 percent from the previous year. This group accounted for 60 percent of the total inventory. Heifers and heifer calves accounted for 4.74 million head, up 2 percent from 2023.

Placements in feedlots during December totaled 1.70 million head, 4 percent below 2022. Net placements were 1.64 million head. During December, placements of cattle and calves weighing less than 600 pounds were 440,000 head, 600-699 pounds were 410,000 head, 700-799 pounds were 380,000 head, 800-899 pounds were 279,000 head, 900-999 pounds were 110,000 head, and 1,000 pounds and greater were 85,000 head.

Marketings of fed cattle during December totaled 1.73 million head, 1 percent below 2022.

Other disappearance totaled 60,000 head during December, 11 percent above 2022.

The complete report can be found on the USDA NASS website at www.nass.usda.gov/Publications.