



Iowa Ag News – Cattle on Feed

Iowa Field Office · 210 Walnut Street Ste 833 · Des Moines IA 50309 · (515) 776-3400 · (800) 772-0825
fax (855) 271-9802 · www.nass.usda.gov/ia

Cooperating with the Iowa Department of Agriculture and Land Stewardship

November 17, 2023 - For Immediate Release

Media Contact: Greg Thessen

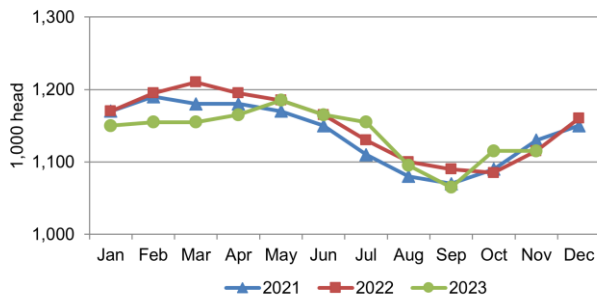
Cattle and calves on feed for the slaughter market in Iowa feedlots with a capacity of 1,000 or more head totaled 640,000 head on November 1, 2023, according to the latest USDA, National Agricultural Statistics Service – *Cattle on Feed* report. This was unchanged from October but up 2 percent from November 1, 2022. Iowa feedlots with a capacity of less than 1,000 head had 475,000 head on feed, unchanged from last month but down 2 percent from last year. Cattle and calves on feed for the slaughter market in all Iowa feedlots totaled 1,115,000 head, unchanged from last month and unchanged from last year.

Placements of cattle and calves in Iowa feedlots with a capacity of 1,000 or more head during October 2023 totaled 83,000 head, down 6 percent from September and down 18 percent from October 2022. Feedlots with a capacity of less than 1,000 head placed 69,000 head, up 8 percent from September and up 3 percent from October 2022. Placements for all feedlots in Iowa totaled 152,000 head, unchanged from September but down 10 percent from October 2022.

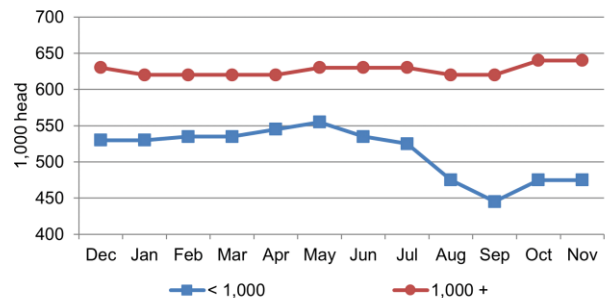
Marketings of fed cattle from Iowa feedlots with a capacity of 1,000 or more head during October 2023 totaled 82,000 head, up 22 percent from September but down 8 percent from October 2022. Feedlots with a capacity of less than 1,000 head marketed 66,000 head, up 120 percent from September and up 47 percent from October 2022. Marketings for all feedlots in Iowa were 148,000 head, up 53 percent from September and up 10 percent from October 2022. **Other disappearance** from all feedlots in Iowa totaled 4,000 head.

Note: This report is a combination of estimates from the USDA Cattle on Feed survey for Iowa feedlots with a capacity of 1,000 or more head and the Iowa Department of Agriculture and Land Stewardship-funded Cattle on Feed survey for Iowa feedlots with a capacity of less than 1,000 head.

**Cattle on Feed, Inventory in all Feedlots
Iowa: 2021-2023**



**Cattle on Feed, Inventory by Feedlot Capacity
Iowa: Past 12 Months**



All Cattle on Feed – Iowa

Item	Feedlots 1,000+ capacity (1,000 head)	Feedlots less than 1,000 capacity (1,000 head)	All feedlots (1,000 head)
Cattle on feed ¹ , October 1, 2023	640	475	1,115
October placements	83	69	152
October marketings	82	66	148
October other disappearance ²	1	3	4
Cattle on feed, November 1, 2023	640	475	1,115

¹ Cattle and calves on feed are steers and heifers being fed a ration of grain, silage, hay and/or protein supplement for slaughter market that are expected to produce a carcass that will grade select or better. It excludes cattle being "backgrounded only" for later sale as feeders or later placement in another feedlot.
² Includes death loss, movement from feedlots to pasture, and shipments to other feedlots for further feeding.

Cattle on Feed, Placements, Marketings, and Other Disappearance by Month, 1,000+ Capacity Feedlots – Selected States and United States: 2022-2023

State	Cattle on Feed ¹ November 1			Placements during October			Marketings during October			Other disappearance ² during October		
	2022	2023	'23 as % of '22	2022	2023	'23 as % of '22	2022	2023	'23 as % of '22	2022	2023	'23 as % of '22
	(1,000) (head)	(1,000) (head)	(percent)	(1,000) (head)	(1,000) (head)	(percent)	(1,000) (head)	(1,000) (head)	(percent)	(1,000) (head)	(1,000) (head)	(percent)
Arizona	271	256	94	19	25	132	21	18	86	1	1	100
California	505	505	100	44	52	118	42	46	110	7	6	86
Colorado	1,070	1,030	96	175	200	114	170	155	91	5	5	100
Idaho	305	315	103	61	59	97	44	37	84	2	2	100
Iowa	630	640	102	101	83	82	89	82	92	2	1	50
Kansas	2,330	2,520	108	410	440	107	430	410	95	10	10	100
Minnesota	95	100	105	24	20	83	13	14	108	1	1	100
Nebraska	2,600	2,540	98	585	610	104	445	480	108	10	10	100
Oklahoma	290	315	109	44	58	132	38	32	84	1	1	100
South Dakota ..	210	220	105	72	69	96	45	33	73	2	1	50
Texas	2,860	2,900	101	440	440	100	390	375	96	10	15	150
Washington	260	270	104	52	51	98	36	35	97	1	1	100
Other States	310	320	103	58	57	98	41	41	100	2	1	50
United States ..	11,736	11,931	102	2,085	2,164	104	1,804	1,758	97	54	55	102

¹ Cattle and calves on feed are steers and heifers being fed a ration of grain, silage, hay and/or protein supplement for slaughter market that are expected to produce a carcass that will grade select or better. It excludes cattle being "backgrounded only" for later sale as feeders or later placement in another feedlot.

² Includes death loss, movement from feedlots to pasture, and shipments to other feedlots for further feeding.

UNITED STATES CATTLE ON FEED

Cattle and calves on feed for the slaughter market in the United States for feedlots with capacity of 1,000 or more head totaled 11.9 million head on November 1, 2023. The inventory was 2 percent above November 1, 2022.

Placements in feedlots during October totaled 2.16 million head, 4 percent above 2022. Net placements were 2.11 million head. During October, placements of cattle and calves weighing less than 600 pounds were 550,000 head, 600-699 pounds were 470,000 head, 700-799 pounds were 465,000 head, 800-899 pounds were 394,000 head, 900-999 pounds were 205,000 head, and 1,000 pounds and greater were 80,000 head.

Marketings of fed cattle during October totaled 1.76 million head, 3 percent below 2022.

Other disappearance totaled 55,000 head during October, 2 percent above 2022.

The complete report can be found on the USDA NASS website at www.nass.usda.gov/Publications.

Cattle on Feed Inventory on 1,000+ Capacity Feedlots – United States

