

Dedicated in the memory of.....
Ralph Gann and Earl Park

In this 2019-2020 annual issue of the “Indiana Agricultural Statistics” publication you will find information about Indiana’s entire agricultural industry. This is the 94th edition and is published by the cooperative efforts of Purdue University and USDA’s National Agricultural Statistics Service. This year’s edition will be the sixth edition that will be published and available from a free mobile app created by Purdue University. The app is available for Apple iPhone, iPad and iPod touch as well as Android users. It can be obtained through iTunes, Google Play and Amazon. Links to those sites where the app can be downloaded are in Purdue Extension’s [The Education Store](#) or use the Quick Response Code (QRC) located on page 132 in this book.

We are again pleased to feature the photography talents of 20 individual 4-H members within Indiana’s 2019-2020 Agricultural Statistics Annual Summary. These photographs, exhibited at the 2019 Indiana State Fair, provide a glimpse of Indiana’s agriculture from future farmers’ perspective. We are grateful to all of the 4-H members who submitted their photos for publication.

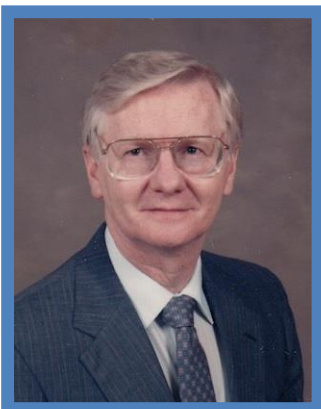
This publication satisfies the growing need for accurate, reliable and unbiased information and data. We would especially like to thank all of the farmers who participated in completing the Census of Agriculture. The data in this publication is collected from Indiana Farmers, agricultural businesses, USDA Farm Service Agency County Staff, Purdue University County Extension Staff, NASDA Enumerators and others that make this Publication possible.

This data is used to provide facts to decision makers that determine the future of Indiana's agricultural industry. The goal for this publication remains unchanged. It is to provide the public with data to help them understand the current situation of Indiana’s farming community and future opportunities. While we strive to exceed this goal the Indiana Field Office of USDA's National Agricultural Statistics Service assures that all individual reports and business data are held in the strictest confidence. We take every action possible to protect your data.

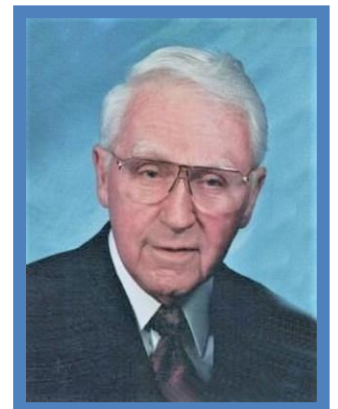
Indiana agriculture continues to be a growing segment of the State’s economy, with Indiana ranked in the top ten nationally for farm receipts. Hoosier farmers should take pride in the fact that even with adverse weather conditions, rising production expenses and prices, Indiana agriculture continues to thrive. Indiana continues to rank near the top nationally in the production of corn, soybeans, popcorn, blueberries, peppermint, spearmint, processing tomatoes, fresh market melons, and vegetables for processing. Indiana livestock producers put our state’s rank at the top for hogs, chickens, eggs, and turkeys.

This Federal/University cooperative effort has existed since 1925 and continues to enhance the opportunity for agricultural research programs for State specific statistical projects in support of agricultural researchers and decision makers. Some of those projects include Agronomic Survey of Indiana Corn and Soybean Growers, Plant Disease and Fungicide Use Survey, and Timber Price Survey. Results of these special research efforts are published by the individual research programs. Results from these special surveys are not a part of this publication but please feel free to contact us for reference to those researchers for additional information.

This edition is dedicated in the memory of Ralph Gann and Earl Park, former State Statisticians in the Indiana Field Office. Both Mr. Gann and Mr. Park served Indiana well for many years.



Ralph Gann
August 2, 1942 – October 26, 2020



Earl Park
December 31, 1919 – March 26, 2020