

CATTLE AND DAIRY PRODUCTS

The total live weight of cattle and calves marketed during 2018 decreased 4 percent from a year earlier. Cash receipts totaled \$354 million, down 9 percent from the \$388 million a year earlier. Gross income (cash receipts plus value of home consumption), also decreased 9 percent from a year earlier.

NUMBER OF CATTLE ON FARMS INDIANA, JANUARY 1, 2014-2019

Class of Livestock	2014	2015	2016	2017	2018	2019 ¹
	<u>Thousand Head</u>					
Cattle and Calves	850	870	890	880	860	880
Cows and Heifers that have Calved	365	380	380	395	395	390
Beef Cows	187	199	196	210	208	209
Milk Cows	178	181	184	185	187	181
Heifers 500 Pounds and Over	160	174	181	180	170	175
For Beef Cow Replacement	39	50	50	50	50	45
For Milk Cow Replacement	68	80	80	80	75	80
Other Heifers	53	44	51	50	45	50
Steers 500 Pounds and Over	103	116	115	108	104	110
Bulls 500 Pounds and Over	17	17	18	17	16	17
Calves Under 500 Pounds	205	183	196	180	175	188
¹ Preliminary.						

NUMBER AND VALUE OF CATTLE ON FARMS INDIANA, JANUARY 1, 2014-2019

January 1	All Cattle and Calves	Average Value Per Head	Total Value
	<u>Thousand Head</u>	<u>Dollars</u>	<u>Thousand Dollars</u>
2014	850	1,110.00	943,500
2015	870	1,430.00	1,244,100
2016	890	1,330.00	1,183,700
2017	880	1,090.00	959,200
2018	860	1,070.00	920,200
2019 ¹	880	910.00	800,800
¹ Preliminary.			

CATTLE AND DAIRY PRODUCTS

CATTLE AND CALVES PRODUCTION AND DISPOSITION INDIANA, 2013-2019

Year	On Hand January 1			Calf Crop	Inshipments	Marketings ¹		Farm Slaughter	Deaths	
	All Cattle and Calves	Cattle and Calves on Feed	All Cows that have Calved			Cattle	Calves	Cattle and Calves	Cattle	Calves
<u>Thousand Head</u>										
2013	810	82	370	325	97	238	102	4	15	23
2014	850	110	365	325	98	243	112	4	18	26
2015	870	100	380	335	100	258	112	4	18	23
2016	890	115	380	340	105	298	117	4	15	21
2017	880	110	395	340	110	312	117	5	15	21
2018	860	90	395	360	115	299	112	5	16	23
2019	880	100	390							
¹ Includes custom slaughter for use on farms where produced and State outshipments, but excludes interfarm sales within the State.										

CATTLE AND CALVES PRODUCTION AND INCOME INDIANA, 2013-2018

Year	Production ¹	Marketings ²	Cash Receipts ³	Value Home Consumption	Gross Income
<u>Thousand Pounds</u>			<u>Thousand Dollars</u>		
2013	243,177	265,800	310,492	14,563	325,055
2014	252,806	273,300	411,389	18,678	430,067
2015	250,807	291,700	428,440	18,429	446,869
2016	281,550	335,600	379,027	14,875	393,902
2017	278,830	350,580	388,240	15,112	403,352
2018	286,270	335,570	353,897	14,703	368,600
¹ Adjustments made for changes in inventory and for inshipments. ² Excludes custom slaughter for use on farms where produced and interfarm sales within the State. ³ Receipts from marketings and sale of farm slaughter.					

CATTLE AND DAIRY PRODUCTS

INSHIPMENTS OF FEEDER CATTLE AND CALVES DIRECT FROM STATES BY STATE OF ORIGIN, REPORTED BY STATE VETERINARIAN: INDIANA, 2013-2018 ¹

State of Origin	2013	2014	2015	2016	2017	2018
Number of Head						
Alabama	1,591	511	423	429	(2)	224
Arkansas	(2)	130	480	---	---	(2)
California	(2)	(2)	(2)	---	---	---
Colorado	(2)	334	175	1,028	503	1,237
Florida	(2)	---	795	160	(2)	---
Georgia	270	621	445	517	267	631
Illinois	2,000	2,107	913	366	14,578	(2)
Iowa	(2)	556	400	443	1,884	2,957
Kansas	---	(2)	167	(2)	111	405
Kentucky	1,554	2,932	1,621	2,406	2,045	4,884
Michigan	5,324	28,726	26,572	32,294	27,935	35,849
Minnesota	---	(2)	240	190	(2)	(2)
Mississippi	278	321	(2)	---	---	---
Missouri	126	248	1,031	1,050	267	267
Montana	(2)	(2)	(2)	(2)	1,045	---
Nebraska	(2)	154	181	149	(2)	186
New York	---	11,660	19,113	12,783	7,018	4,742
North Carolina	328	295	263	9,986	2,140	---
North Dakota	---	---	(2)	---	110	---
Ohio	374	7,834	12,948	14,349	33,609	7,822
Oklahoma	(2)	(2)	(2)	(2)	(2)	(2)
Pennsylvania	(2)	6,801	14,538	9,055	10,071	10,534
South Carolina	(2)	381	(2)	---	---	---
South Dakota	(2)	140	336	2,532	2,324	4,810
Tennessee	143	266	288	226	392	802
Texas	(2)	(2)	1,451	131	(2)	(2)
Virginia	602	990	1,449	1,317	1,207	314
West Virginia	(2)	(2)	(2)	---	665	120
Wisconsin	10,934	16,128	32,946	23,314	32,892	48,475
Other States & Foreign	549	1,654	4,420	9,105	8,890	6,452
Total	24,073	82,901	121,195	121,830	147,953	130,711

¹ Previous years revised to reflect change in how data is reported. ² Data combined in "Other States and Foreign".

INSHIPMENTS OF CATTLE REPORTED BY STATE VETERINARIAN INDIANA, 2013-2018 ¹

Year	Jan	Feb	Mar	Apr	May	Jun	Jul	Aug	Sep	Oct	Nov	Dec	Total
Number of Head													
2013	6,356	5,473	7,670	5,637	6,992	2,542	3,542	2,718	3,996	6,835	6,964	5,996	64,721
2014	8,977	7,444	10,357	10,135	10,861	10,701	10,654	8,404	10,255	11,006	9,057	6,727	114,578
2015	12,547	11,367	11,757	13,112	12,693	10,028	12,560	11,725	16,069	12,239	15,264	14,746	154,107
2016	15,839	9,875	15,909	11,867	12,397	9,447	10,559	15,558	11,341	13,083	14,967	14,437	155,279
2017	12,176	11,058	11,641	10,517	13,448	14,515	15,833	18,172	10,948	25,506	16,596	15,727	178,525
2018	15,290	11,685	14,169	13,902	15,206	11,420	13,773	13,931	13,336	14,362	11,877	11,699	160,650

¹ Includes both feeders and breeding stock.

CATTLE AND DAIRY PRODUCTS

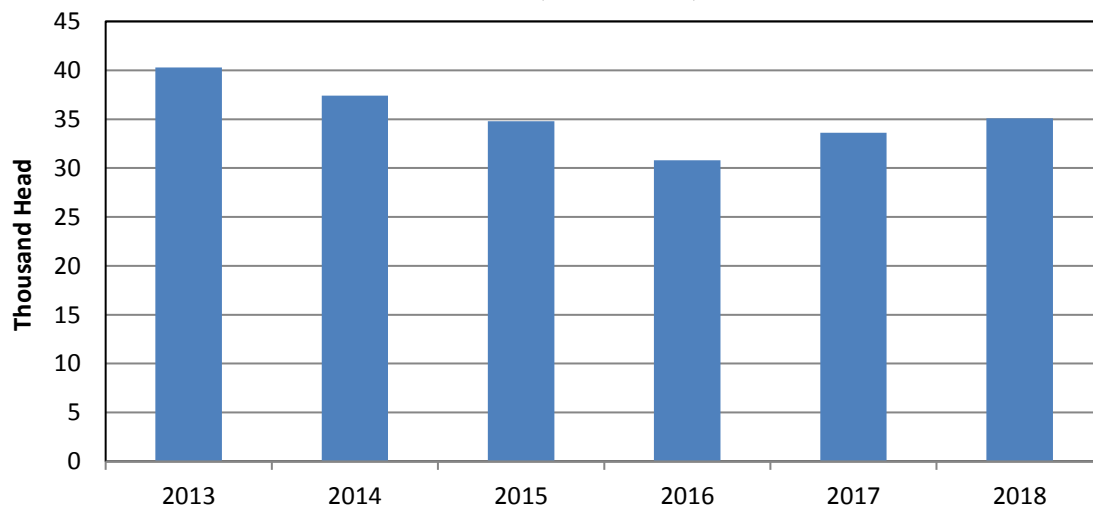
COMMERCIAL CATTLE SLAUGHTER BY MONTH, INDIANA, 2013-2018 ¹

Year	Jan	Feb	Mar	Apr	May	Jun	Jul	Aug	Sep	Oct	Nov	Dec	Total ²
Thousand Head													
2013	4.3	3.2	3.1	3.0	3.0	3.0	3.4	3.2	3.3	4.4	2.8	3.5	40.3
2014	3.4	3.0	2.9	2.9	2.8	2.7	4.3	3.1	3.1	3.9	2.4	3.0	37.4
2015	3.4	2.6	2.7	2.9	3.1	2.9	2.7	2.8	3.0	3.2	2.4	3.0	34.8
2016	2.8	2.7	2.7	2.4	2.4	2.5	2.3	2.9	2.7	2.7	2.2	2.6	30.8
2017	3.1	2.7	2.6	2.4	2.7	2.5	2.5	3.0	3.7	3.4	2.4	2.5	33.6
2018	3.2	2.9	2.7	2.8	2.9	2.7	2.9	3.1	2.9	3.9	2.5	2.7	35.1
Average Live Weight													
2013	1,058	1,055	1,057	1,060	1,056	1,059	1,059	1,073	1,064	1,063	1,066	1,066	1,061
2014	1,067	1,066	1,058	1,068	1,060	1,058	1,066	1,069	1,068	1,065	1,065	1,058	1,064
2015	1,057	1,066	1,069	1,065	1,064	1,063	1,067	1,067	1,067	1,106	1,109	1,106	1,075
2016	1,106	1,106	1,105	1,103	1,107	1,103	1,106	1,107	1,104	1,103	1,105	1,106	1,105
2017	1,105	1,104	1,106	1,103	1,106	1,103	1,103	1,108	1,102	1,103	1,117	1,107	1,105
2018	1,152	1,153	1,152	1,152	1,151	1,153	1,153	1,153	1,153	1,149	1,149	1,152	1,152
Total Live Weight (Thousand Pounds)													
2013	4,592	3,371	3,324	3,198	3,177	3,180	3,597	3,444	3,508	4,673	2,980	3,713	42,757
2014	3,598	3,221	3,105	3,127	2,939	2,836	4,540	3,273	3,277	4,102	2,572	3,181	39,771
2015	3,637	2,794	2,884	3,105	3,341	3,063	2,908	2,989	3,187	3,589	2,636	3,323	37,455
2016	3,137	2,934	2,949	2,636	2,615	2,793	2,598	3,167	3,006	2,991	2,395	2,834	34,056
2017	3,474	2,953	2,883	2,651	2,958	2,782	2,717	3,288	4,059	3,798	2,728	2,819	37,110
2018	3,636	3,305	3,081	3,224	3,392	3,135	3,304	3,522	3,398	4,433	2,914	3,071	40,414

¹ Includes custom slaughter, but excludes on-farm slaughter.

² Totals may not add due to rounding.

COMMERCIAL CATTLE SLAUGHTER NUMBER OF HEAD, INDIANA, 2013-2018



CATTLE AND DAIRY PRODUCTS

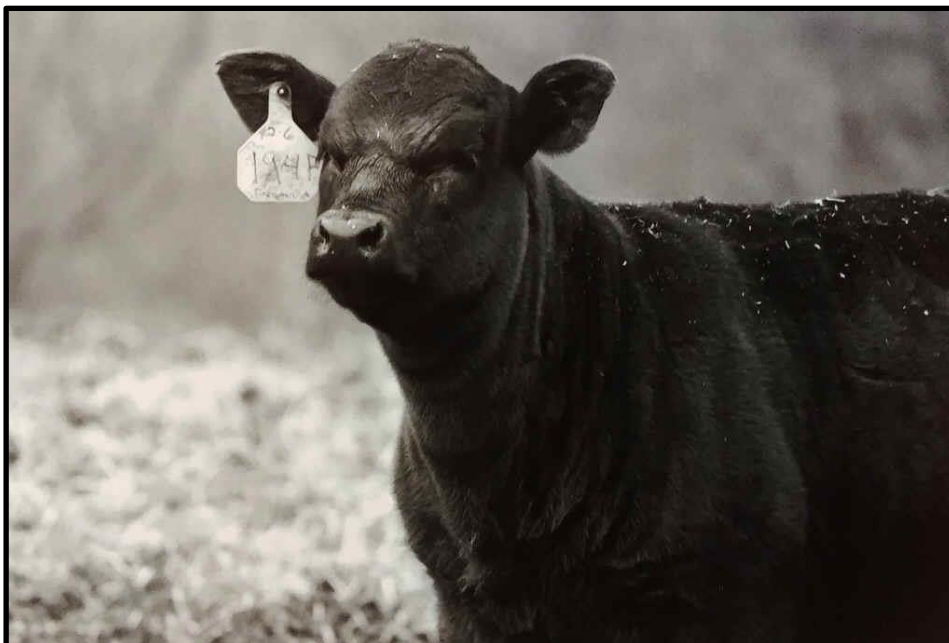
COMMERCIAL CALF SLAUGHTER BY MONTH, INDIANA, 2013-2018 ¹

Year	Jan	Feb	Mar	Apr	May	Jun	Jul	Aug	Sep	Oct	Nov	Dec	Total ³
Thousand Head													
2013	0.6	0.5	0.5	0.5	0.7	0.6	0.7	0.6	0.6	0.6	0.6	0.7	7.4
2014	0.6	0.6	0.6	0.4	0.5	0.4	0.4	0.3	0.4	0.4	0.4	0.5	5.5
2015	0.6	0.4	0.3	0.4	0.3	0.3	0.4	0.3	0.4	0.4	0.4	0.4	4.6
2016	0.5	0.3	0.3	0.4	0.4	0.5	0.5	0.5	0.5	0.4	0.3	0.4	5.0
2017	(2)	(2)	(2)	(2)	(2)	(2)	(2)	(2)	(2)	(2)	(2)	(2)	(2)
2018	(2)	(2)	(2)	(2)	(2)	(2)	(2)	(2)	(2)	(2)	(2)	(2)	(2)
Average Live Weight													
2013	310	290	299	339	301	284	266	276	284	278	266	261	286
2014	269	279	286	340	277	261	249	254	282	285	286	276	279
2015	250	278	326	358	290	307	274	296	271	236	267	268	281
2016	206	328	344	303	273	289	246	258	253	326	300	293	279
2017	(2)	(2)	(2)	(2)	(2)	(2)	(2)	(2)	(2)	(2)	(2)	(2)	(2)
2018	(2)	(2)	(2)	(2)	(2)	(2)	(2)	(2)	(2)	(2)	(2)	(2)	(2)
Total Live Weight (Thousand Pounds)													
2013	191	158	161	164	216	182	178	173	179	175	153	185	2,114
2014	159	165	162	135	127	117	91	86	120	121	113	124	1,520
2015	150	104	92	143	83	93	113	87	106	103	93	119	1,286
2016	109	98	114	113	109	142	122	136	121	115	100	116	1,394
2017	(2)	(2)	(2)	(2)	(2)	(2)	(2)	(2)	(2)	(2)	(2)	(2)	(2)
2018	(2)	(2)	(2)	(2)	(2)	(2)	(2)	(2)	(2)	(2)	(2)	(2)	(2)

¹ Includes custom slaughter, but excludes on-farm slaughter.

² Data not published.

³ Totals may not add due to rounding.



“Looking for Mom”
Photographer -- Katie Liebrandt
Age 11, Veedersburg, IN

CATTLE AND DAIRY PRODUCTS

NUMBER OF MILK COWS AND MILK PRODUCTION BY MONTH, INDIANA, 2013-2018

Year	Jan	Feb	Mar	Apr	May	Jun	Jul	Aug	Sep	Oct	Nov	Dec	Annual Avg
Average Number of Milk Cows on Farms (Thousands)													
2013	175	174	(1)	(1)	(1)	(1)	177	177	177	178	178	178	176
2014	178	176	176	176	177	178	178	178	179	179	179	180	178
2015	181	181	181	181	181	181	182	182	183	183	184	184	182
2016	184	184	184	184	184	184	184	184	184	184	185	185	184
2017	186	186	186	187	188	188	187	187	187	187	187	187	187
2018	187	186	185	185	184	184	184	184	182	182	181	181	184
Milk Production Per Cow (Pounds)													
2013	1,850	1,710	(1)	(1)	(1)	(1)	1,785	1,810	1,710	1,790	1,730	1,820	21,761
2014	1,805	1,655	1,895	1,835	1,920	1,835	1,820	1,810	1,745	1,800	1,765	1,840	21,669
2015	1,855	1,680	1,865	1,845	1,930	1,805	1,830	1,825	1,745	1,800	1,770	1,835	21,786
2016	1,875	1,790	1,960	1,920	1,945	1,830	1,870	1,870	1,805	1,880	1,850	1,915	22,527
2017	1,930	1,765	2,005	1,955	2,055	1,915	1,860	1,860	1,810	1,885	1,830	1,900	22,754
2018	1,930	1,760	1,995	1,950	2,010	1,885	1,890	1,880	1,770	1,870	1,810	1,890	22,614
Milk Produced on Farms (Million Pounds)													
2013	324	298	331	328	340	319	316	320	303	319	308	324	3,830
2014	321	291	328	323	340	327	324	322	312	322	316	331	3,857
2015	336	304	338	334	349	327	333	332	319	329	326	338	3,965
2016	345	329	361	353	358	337	344	344	332	346	342	354	4,145
2017	359	328	373	366	386	360	348	348	338	352	342	355	4,255
2018	361	327	369	361	370	347	348	346	322	340	328	342	4,161

¹ Survey was not conducted in April and July resulting in no milk per cow data for March through June.

MILK PRODUCTION, DISPOSITION AND INCOME INDIANA, 2013-2018

Year	Average Milk Cows On Farms	Milk Production Per Cow	Total Milk Production	Milk Disposition		Combined Sales of Butter, Cream and Milk		
				Used on Farm	Sold as Whole Milk ¹	Average Returns		Cash Receipts
						Per 100 Lbs. Milk	Per Pound Butterfat	
	<u>Thousands</u>	<u>Pounds</u>	<u>Million Pounds</u>			<u>Dollars</u>		<u>Thousand Dollars</u>
2013	176	21,761	3,830	27	3,803	20.80	5.55	791,024
2014	178	21,669	3,857	27	3,830	24.30	6.57	930,690
2015	182	21,786	3,965	27	3,938	17.20	4.69	677,336
2016	184	22,527	4,145	27	4,118	16.20	4.38	667,116
2017	187	22,754	4,255	27	4,228	17.70	4.73	748,356
2018	184	22,614	4,161	27	4,134	15.70	4.15	649,038

¹ Includes milk sold to plants, milk sold directly to consumers and milk produced by institutional herds.