

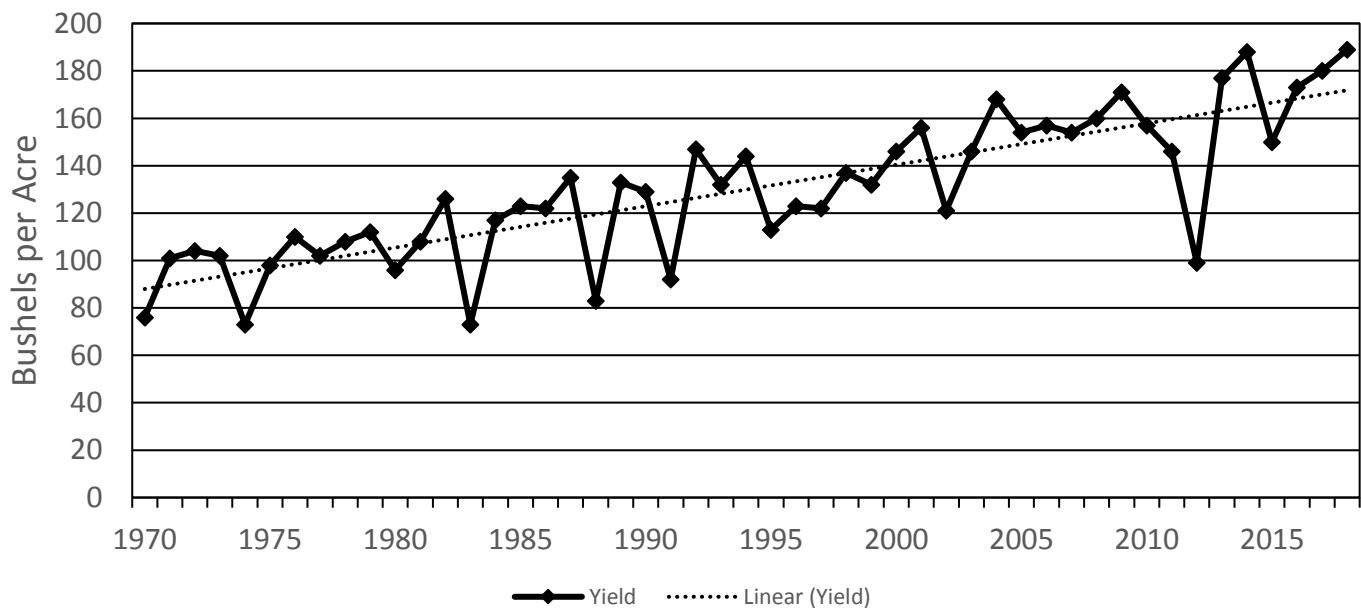
CROP SUMMARY

CORN FORECAST AND FINAL YIELD INDIANA, 1995-2018

Year	August Forecast	September Forecast	October Forecast	November Forecast	Final Yield Per Acre
	Yield (Bu)	Yield (Bu)	Yield (Bu)	Yield (Bu)	(Bushels)
1995	135	125	119	116	113
1996	118	118	120	124	123
1997	127	122	120	120	122
1998	136	139	137	137	137
1999	130	128	128	130	132
2000	155	155	151	147	146
2001	147	152	160	160	156
2002	124	119	117	117	121
2003	144	145	148	150	146
2004	156	157	167	169	168
2005	145	149	149	151	154
2006	167	167	165	159	157
2007	157	160	158	158	154
2008	164	162	160	160	160
2009	163	163	166	166	171
2010	176	170	160	160	157
2011	150	145	145	145	146
2012	100	100	100	100	99
2013	166	166	(1)	174	177
2014	179	184	186	186	188
2015	158	156	156	156	150
2016	187	185	177	177	173
2017	173	171	173	181	180
2018	186	192	194	194	189

¹ Data not available due to sequestration.

Corn Yield Trend Indiana, 1970-2018



CROP SUMMARY

SOYBEAN FORECAST AND FINAL YIELD INDIANA, 1995-2018

Year	August Forecast	September Forecast	October Forecast	November Forecast	Final Yield Per Acre
	Yield (Bu)	Yield (Bu)	Yield (Bu)	Yield (Bu)	(Bushels)
1995	43.0	44.0	40.0	39.0	39.5
1996	35.0	35.0	38.0	39.0	38.0
1997	44.0	42.0	42.0	44.0	43.5
1998	45.0	45.0	42.0	42.0	42.0
1999	41.0	40.0	39.0	38.0	39.0
2000	46.0	46.0	46.0	46.0	46.0
2001	46.0	48.0	49.0	49.0	49.0
2002	41.0	41.0	40.0	41.0	41.5
2003	43.0	43.0	40.0	38.0	38.0
2004	45.0	45.0	51.0	53.0	51.5
2005	46.0	45.0	46.0	48.0	49.0
2006	49.0	50.0	51.0	51.0	50.0
2007	47.0	43.0	43.0	44.0	46.0
2008	46.0	43.0	42.0	44.0	45.0
2009	45.0	43.0	43.0	46.0	49.0
2010	49.0	50.0	50.0	50.0	48.5
2011	43.0	42.0	42.0	42.0	45.5
2012	37.0	37.0	41.0	44.0	44.0
2013	50.0	48.0	(¹)	50.0	51.5
2014	51.0	52.0	54.0	54.0	55.5
2015	49.0	50.0	51.0	51.0	50.0
2016	55.0	58.0	59.0	59.0	57.5
2017	55.0	56.0	55.0	55.0	54.0
2018	58.0	60.0	60.0	60.0	58.5

¹ Data not available due to sequestration.

Soybean Yield Trend Indiana, 1970-2018

