

CATTLE AND DAIRY PRODUCTS

The total live weight of cattle and calves marketed during 2010 increased 11 percent from a year earlier. The average price for cattle increased \$9.90 per cwt. to \$83.70. Calf prices for 2010 averaged \$107.00 per cwt. compared with \$96.40 during 2009. Cash receipts totaled \$273 million, up 25 percent from the \$217 million a year earlier. Gross income (cash receipts plus value of home consumption) increased 26 percent from a year earlier.

NUMBER OF CATTLE ON FARMS INDIANA, JANUARY 1, 2006-2011

Class of Livestock	2006	2007	2008	2009	2010	2011 ^{1/}
	<u>Thousand Head</u>					
Cattle and Calves	900	900	890	860	870	850
Cows and Heifers that have Calved	375	400	400	380	390	385
Beef Cows	217	234	234	213	221	213
Milk Cows	158	166	166	167	169	172
Heifers 500 Pounds and Over	175	165	172	157	167	167
For Beef Cow Replacement	45	38	40	36	42	35
For Milk Cow Replacement	65	71	77	66	70	62
Other Heifers	65	56	55	55	55	70
Steers 500 Pounds and Over	125	110	105	104	122	101
Bulls 500 Pounds and Over	19	20	19	16	19	18
Calves Under 500 Pounds	206	205	194	203	172	179
^{1/} Preliminary.						

NUMBER AND VALUE OF CATTLE ON FARMS INDIANA, JANUARY 1, 2006-2011

January 1	All Cattle and Calves	Average Value Per Head	Total Value
	<u>Thousand Head</u>	<u>Dollars</u>	<u>Thousand Dollars</u>
2006	900	1,060.00	954,000
2007	900	1,000.00	900,000
2008	890	1,110.00	987,900
2009	860	970.00	834,200
2010	870	870.00	756,900
2011 ^{1/}	850	920.00	782,000
^{1/} Preliminary.			

CATTLE AND DAIRY PRODUCTS

CATTLE AND CALVES PRODUCTION AND DISPOSITION INDIANA, 2005-2011

Year	On Hand January 1			Calf Crop	Inshipments	Marketings ^{1/}		Farm Slaughter	Deaths	
	All Cattle and Calves	Cattle and Calves on Feed	All Cows that have Calved			Cattle	Calves		Cattle	Calves
Thousand Head										
2005	850	125	385	330	115	250	97	4	15	29
2006	900	115	375	350	95	280	124	4	14	23
2007	900	110	400	355	105	300	127	4	15	24
2008	890	110	400	315	105	290	124	4	13	19
2009	860	120	380	335	88	263	113	4	13	20
2010	870	122	390	340	91	291	119	6	13	22
2011	850	129	385							

^{1/} Includes custom slaughter for use on farms where produced and State outshipments, but excludes interfarm sales within the State.

CATTLE AND CALVES PRODUCTION AND INCOME INDIANA, 2005-2010

Year	Production ^{1/}	Marketings ^{2/}	Price Per 100 Pounds		Cash Receipts ^{3/}	Value Home Consumption	Gross Income
			Cattle	Calves			
	<u>Thousand Pounds</u>		<u>Dollars</u>			<u>Thousand Dollars</u>	
2005	243,333	270,025	85.20	117.00	236,556	12,604	249,160
2006	261,264	307,030	86.10	119.00	272,983	12,766	285,749
2007	273,060	328,475	81.80	106.00	275,196	12,106	287,302
2008	234,424	318,400	78.50	93.00	253,482	11,571	265,053
2009	271,964	287,850	73.80	96.40	217,451	10,965	228,416
2010	256,897	319,615	83.70	107.00	272,834	14,482	287,316

^{1/} Adjustments made for changes in inventory and for inshipments.
^{2/} Excludes custom slaughter for use on farms where produced and interfarm sales within the State.
^{3/} Receipts from marketings and sale of farm slaughter.

CATTLE AND DAIRY PRODUCTS

INSHIPMENTS OF FEEDER CATTLE AND CALVES DIRECT FROM STATES BY STATE OF ORIGIN, REPORTED BY STATE VETERINARIAN: INDIANA, 2005-2010 ^{1/}

State of Origin	2005	2006	2007	2008	2009	2010
Number of Head						
Alabama	1,256	1,199	825	1,739	959	932
Arizona	2/	---	117	---	---	---
Arkansas	149	2/	---	2/	187	2/
Colorado	2/	450	151	498	107	197
Florida	12,486	8,408	6,225	3,585	590	161
Georgia	767	1,217	6,593	2,868	1,013	1,869
Illinois	2/	1,126	1,885	1,718	625	1,249
Iowa	225	2/	388	423	2/	172
Kansas	183	370	2/	2/	2/	2/
Kentucky	8,880	5,494	8,516	5,484	3,577	3,948
Louisiana	---	222	167	---	---	---
Michigan	23,862	19,853	20,345	19,812	10,720	14,231
Mississippi	1,140	1,301	1,230	2,071	408	301
Missouri	914	1,553	408	811	170	662
Montana	478	697	112	173	2/	131
Nebraska	239	110	2/	162	2/	2/
New York	4,226	2,943	3,787	2,250	1,827	2/
North Carolina	676	476	708	897	424	1,016
North Dakota	975	2/	213	2/	198	2/
Ohio	593	220	1,160	600	162	846
Oklahoma	---	146	110	---	118	239
Pennsylvania	260	626	1,994	---	189	2/
South Carolina	321	211	447	163	435	250
South Dakota	357	225	2/	2/	2/	2/
Tennessee	1,198	1,082	1,217	1,001	823	1,373
Texas	421	774	1,034	229	222	380
Utah	2/	373	---	---	---	2/
Virginia	2,118	1,125	2,609	1,517	740	852
West Virginia	634	281	2/	476	---	2/
Wisconsin	1,917	8,741	11,130	15,291	11,892	4,824
Wyoming	253	---	135	2/	2/	112
Other States & Foreign	748	325	1,576	9,383	3,674	3,186
Total	65,276	59,548	73,082	71,151	39,060	36,931

^{1/} Previous years revised to reflect change in how data is reported. ^{2/} Data combined in "Other States and Foreign".

INSHIPMENTS OF CATTLE REPORTED BY STATE VETERINARIAN INDIANA, 2005-2010 ^{1/}

Year	Jan	Feb	Mar	Apr	May	Jun	Jul	Aug	Sep	Oct	Nov	Dec	Total
Number of Head													
2005	1,835	1,224	3,455	3,612	7,556	7,210	10,149	6,893	11,306	9,728	8,275	8,598	79,841
2006	5,056	3,505	4,597	2,942	7,709	6,694	4,660	7,537	8,706	10,647	11,058	4,107	77,218
2007	10,966	4,895	4,688	8,966	7,813	6,597	6,917	7,733	8,998	10,485	12,556	9,223	99,837
2008	8,102	7,845	8,537	8,914	8,291	5,334	8,382	8,726	8,337	9,875	7,461	9,727	99,531
2009	6,847	8,515	7,215	6,532	11,655	2,975	4,552	4,148	5,239	6,609	1,563	3,350	69,200
2010	5,567	5,866	7,092	5,183	7,681	4,279	4,957	14,545	7,115	5,605	13,895	2,663	84,448

^{1/} Includes both feeders and breeding stock.

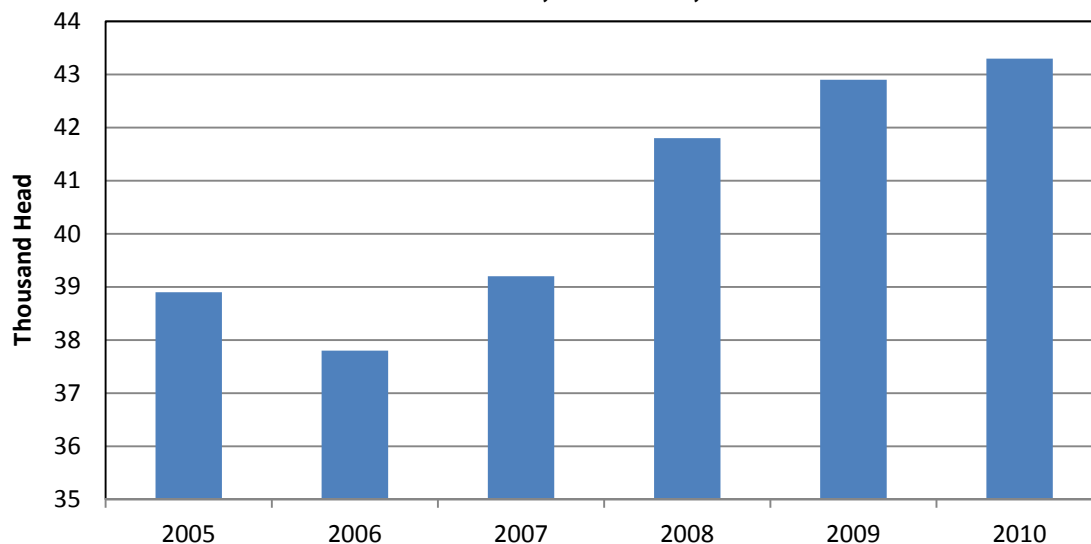
CATTLE AND DAIRY PRODUCTS

COMMERCIAL CATTLE SLAUGHTER BY MONTH, INDIANA, 2005-2010 ^{1/}

Year	Jan	Feb	Mar	Apr	May	Jun	Jul	Aug	Sep	Oct	Nov	Dec	Total ^{2/}
Thousand Head													
2005	3.5	2.9	3.3	2.6	2.6	3.2	2.9	3.8	3.3	3.9	3.6	3.3	38.9
2006	3.4	2.9	3.0	2.5	3.0	2.7	3.0	3.7	3.3	3.7	3.5	3.2	37.8
2007	4.0	2.6	2.8	2.7	3.0	2.9	3.1	3.8	3.3	4.8	2.9	3.2	39.2
2008	4.0	3.0	3.1	3.5	2.7	3.0	3.7	3.5	3.5	4.7	2.8	4.2	41.8
2009	3.6	3.6	3.2	3.7	2.9	3.2	3.8	3.5	4.2	4.0	3.0	4.3	42.9
2010	3.7	3.3	3.8	3.2	2.9	3.8	3.0	3.4	4.1	4.9	3.4	4.0	43.3
Average Live Weight													
2005	1,047	1,040	1,044	1,034	1,041	1,042	1,049	1,049	1,043	1,049	1,053	1,046	1,045
2006	1,042	1,051	1,044	1,034	1,042	1,044	1,043	1,055	1,051	1,053	1,056	1,059	1,048
2007	1,050	1,048	1,051	1,046	1,053	1,048	1,054	1,054	1,055	1,053	1,057	1,053	1,052
2008	1,054	1,052	1,056	1,052	1,055	1,056	1,061	1,057	1,058	1,056	1,056	1,056	1,056
2009	1,058	1,057	1,056	1,054	1,057	1,058	1,059	1,059	1,058	1,057	1,058	1,057	1,057
2010	1,057	1,053	1,055	1,053	1,062	1,059	1,063	1,056	1,056	1,053	1,056	1,054	1,056
Total Live Weight (Thousand Pounds)													
2005	3,615	2,979	3,474	2,708	2,695	3,326	3,085	3,942	3,481	4,086	3,769	3,512	40,673
2006	3,560	3,030	3,131	2,583	3,113	2,860	3,122	3,872	3,434	3,877	3,677	3,404	39,663
2007	4,156	2,755	2,946	2,836	3,108	3,038	3,309	4,046	3,531	5,020	3,060	3,396	41,198
2008	4,237	3,199	3,231	3,678	2,881	3,205	3,934	3,704	3,726	5,012	2,979	4,387	44,173
2009	3,845	3,756	3,378	3,878	3,020	3,353	4,061	3,712	4,425	4,247	3,213	4,500	45,387
2010	3,955	3,440	3,970	3,347	3,068	4,036	3,139	3,549	4,332	5,133	3,553	4,220	45,743

^{1/} Includes custom slaughter, but excludes on-farm slaughter.
^{2/} Totals may not add due to rounding.

COMMERCIAL CATTLE SLAUGHTER NUMBER OF HEAD, INDIANA, 2005-2010



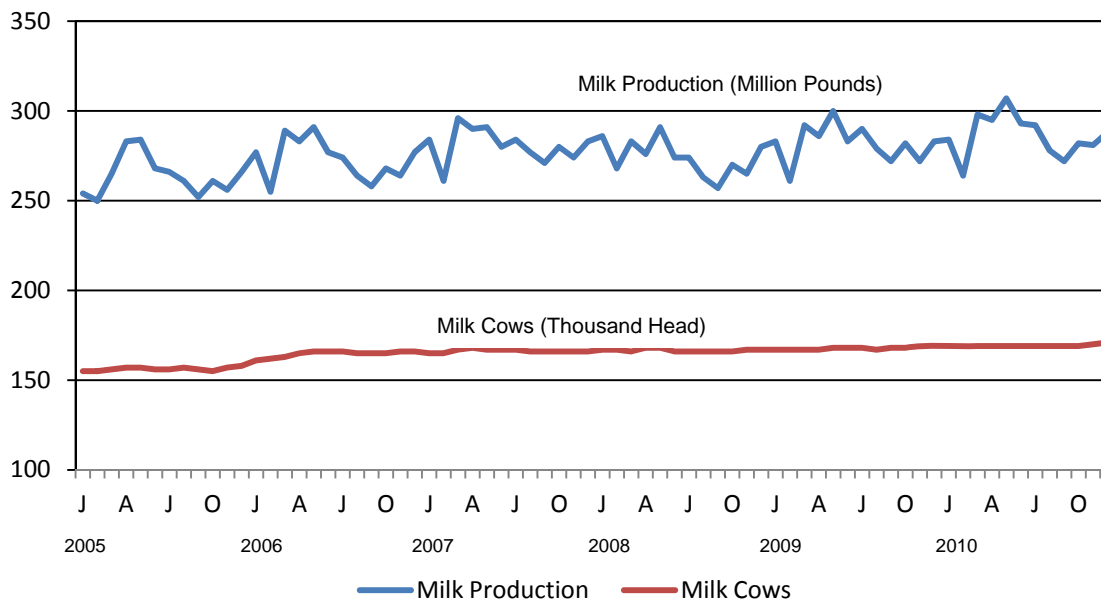
CATTLE AND DAIRY PRODUCTS

Dairy farmers produced 3.4 billion pounds of milk during 2010, 2 percent above last year and 4 percent above 2008. Average number of milk cows increased to 169,000. Milk production per cow increased 1 percent to 20,320 pounds.

NUMBER OF MILK COWS AND MILK PRODUCTION BY MONTH, INDIANA, 2005-2010

Year	Jan	Feb	Mar	Apr	May	Jun	Jul	Aug	Sep	Oct	Nov	Dec	Annual Avg
Milk Cows on Farms (Thousands)													
2005	155	155	156	157	157	156	156	157	156	155	157	158	156
2006	161	162	163	165	166	166	166	165	165	165	166	166	165
2007	165	165	167	168	167	167	167	166	166	166	166	166	166
2008	167	167	166	168	168	166	166	166	166	166	167	167	167
2009	167	167	167	167	168	168	168	167	168	168	169	169	168
2010	169	169	169	169	169	169	169	169	169	169	170	171	169
Milk Production Per Cow (Pounds)													
2005	1,640	1,610	1,700	1,800	1,810	1,715	1,705	1,660	1,615	1,685	1,630	1,685	20,295
2006	1,720	1,575	1,775	1,715	1,750	1,670	1,650	1,600	1,565	1,625	1,590	1,670	19,861
2007	1,720	1,580	1,770	1,725	1,740	1,675	1,700	1,670	1,635	1,685	1,650	1,705	20,307
2008	1,710	1,605	1,705	1,640	1,730	1,650	1,650	1,585	1,550	1,625	1,585	1,675	19,683
2009	1,695	1,560	1,750	1,710	1,785	1,685	1,725	1,670	1,620	1,680	1,610	1,675	20,137
2010	1,680	1,560	1,765	1,745	1,815	1,735	1,730	1,645	1,610	1,670	1,650	1,685	20,320
Milk Produced on Farms (Million Pounds)													
2005	254	250	265	283	284	268	266	261	252	261	256	266	3,166
2006	277	255	289	283	291	277	274	264	258	268	264	277	3,277
2007	284	261	296	290	291	280	284	277	271	280	274	283	3,371
2008	286	268	283	276	291	274	274	263	257	270	265	280	3,287
2009	283	261	292	286	300	283	290	279	272	282	272	283	3,383
2010	284	264	298	295	307	293	292	278	272	282	281	288	3,434

MONTHLY MILK PRODUCTION AND MILK COWS INDIANA, 2005-2010

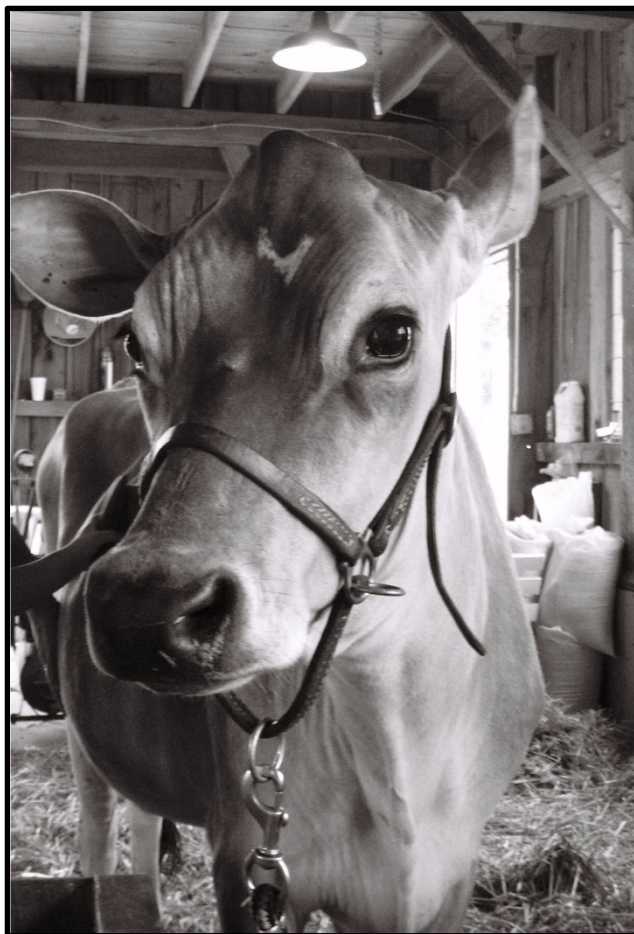


CATTLE AND DAIRY PRODUCTS

MILK PRODUCTION, DISPOSITION AND INCOME INDIANA, 2005-2010

Year	Average Milk Cows On Farms	Milk Production Per Cow	Total Milk Production	Milk Disposition		Combined Sales of Butter, Cream and Milk		
				Used on Farm	Sold as Whole Milk ^{1/}	Average Returns		Cash Receipts
						Per 100 Lbs. Milk	Per Pound Butterfat	
	<u>Thousands</u>	<u>Pounds</u>	<u>Million Pounds</u>			<u>Dollars</u>	<u>Dollars</u>	<u>Thousand Dollars</u>
2005	156	20,295	3,166	25	3,141	16.00	4.40	502,560
2006	165	19,861	3,277	25	3,252	13.30	3.61	432,516
2007	166	20,307	3,371	25	3,346	19.70	5.37	659,162
2008	167	19,683	3,287	25	3,262	19.60	5.25	639,352
2009	168	20,137	3,383	25	3,358	13.40	3.62	449,972
2010	169	20,320	3,434	26	3,408	17.30	4.70	589,584

^{1/} Includes milk sold to plants, milk sold directly to consumers and milk produced by institutional herds.



"Buttercup"
Photographer -- Brooke Bond
Age 9, Winchester, IN