

HOGS AND PIGS

The total pig crop in 2009 was down 3 percent from the pig crop in 2008. Sows farrowed during the year was down 6 percent from the previous year, while litter rates increased 3 percent to 9.44. A \$4.30 decrease in average price per hundredweight brought a 9 percent decrease in cash receipts for 2009. Gross income of \$835 million (cash receipts plus value of home consumption) decreased 9 percent from a year earlier.

NUMBER OF HOGS ON FARMS BY CLASS, INDIANA, DECEMBER 1, 2004-2009

Class of Livestock	2004	2005	2006	2007	2008	2009 ^{1/}
Thousand Head						
Hogs and Pigs	3,200	3,250	3,350	3,700	3,550	3,600
Breeding Stock	280	300	320	320	280	280
Market Hogs	2,920	2,950	3,030	3,380	3,270	3,320

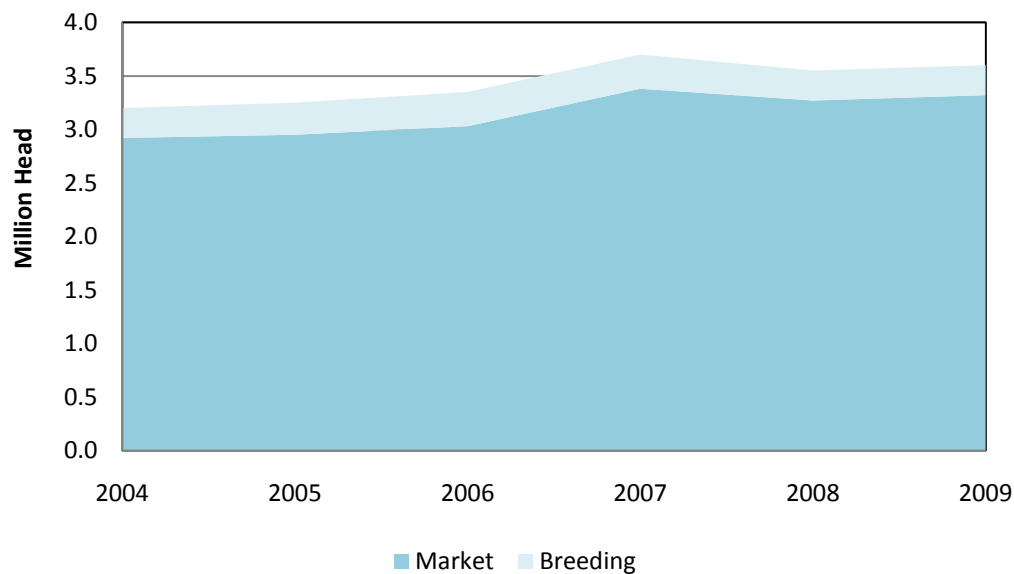
^{1/} Preliminary.

NUMBER AND VALUE OF HOGS ON FARMS INDIANA, DECEMBER 1, 2004-2009

December 1	Hogs and Pigs	Average Value Per Head	Total Value
	Thousand Head	Dollars	Thousand Dollars
2004	3,200	110.00	352,000
2005	3,250	96.00	312,000
2006	3,350	91.00	304,850
2007	3,700	75.00	277,500
2008	3,550	91.00	323,050
2009 ^{1/}	3,600	84.00	306,600

^{1/} Preliminary.

HOGS AND PIGS INVENTORY INDIANA, DECEMBER 1, 2004-2009



HOGS AND PIGS

NUMBER OF HOGS ON FARMS BY WEIGHT GROUPS BY QUARTERS, INDIANA, 2004-2010

Year and Month	Total Breeding Herd	Market Hogs and Pigs					Total Inventory
		Under 50 Pounds ^{1/}	50-119 Pounds ^{1/}	120-179 Pounds	180 Lbs and Over	Total	
Thousand Head							
March 1, 2004	300	1,060	660	620	510	2,850	3,150
June 1, 2004	290	1,040	660	600	560	2,860	3,150
September 1, 2004	290	1,080	710	610	560	2,960	3,250
December 1, 2004	280	1,010	750	600	560	2,920	3,200
March 1, 2005	280	1,030	660	580	500	2,770	3,050
June 1, 2005	290	1,070	720	550	520	2,860	3,150
September 1, 2005	290	1,050	720	550	490	2,810	3,100
December 1, 2005	300	1,060	740	560	590	2,950	3,250
March 1, 2006	300	1,030	700	560	510	2,800	3,100
June 1, 2006	310	1,080	760	550	500	2,890	3,200
September 1, 2006	320	1,080	770	590	540	2,980	3,300
December 1, 2006	320	1,120	760	580	570	3,030	3,350
March 1, 2007	310	1,070	730	580	560	2,940	3,250
June 1, 2007	300	1,120	780	590	560	3,050	3,350
September 1, 2007	300	1,120	840	640	600	3,200	3,500
December 1, 2007	320	1,260	850	680	590	3,380	3,700
March 1, 2008	310	1,200	840	680	620	3,340	3,650
June 1, 2008	290	1,180	900	670	610	3,360	3,650
September 1, 2008	280	1,090	1,000	620	610	3,320	3,600
December 1, 2008	280	1,090	960	610	610	3,270	3,550
March 1, 2009	270	1,140	940	620	580	3,280	3,550
June 1, 2009	270	1,100	1,040	630	560	3,330	3,600
September 1, 2009	280	1,140	970	600	610	3,320	3,600
December 1, 2009	280	1,080	970	640	630	3,320	3,600
March 1, 2010	290	1,140	900	620	600	3,260	3,550
June 1, 2010	290	1,060	1,000	630	620	3,310	3,600

^{1/} Data for 2004-2007 is for categories "Under 60 Pounds" and "60-119 Pounds", respectively.

HOGS AND PIGS

SOWS FARROWED AND PIG CROP BY QUARTERS AND TOTAL, INDIANA, 2004-2010

Year	Spring		Fall		Total
	Dec 1/ - Feb	Mar - May	Jun - Aug	Sep - Nov	
<u>Sows Farrowing (Thousands)</u>					
2004	145	135	140	135	555
2005	130	135	140	135	540
2006	130	135	140	140	545
2007	140	145	150	155	590
2008	150	145	145	140	580
2009	140	135	135	135	545
2010	140	140			
<u>Pigs Per Litter</u>					
2004	8.85	8.90	9.00	8.85	8.90
2005	8.80	8.85	8.90	9.00	8.89
2006	8.90	8.90	8.95	8.90	8.91
2007	8.80	8.95	9.10	9.00	8.97
2008	9.00	9.10	9.25	9.20	9.14
2009	9.30	9.40	9.50	9.55	9.44
2010	9.40	9.60			
<u>Pig Crop (Thousands)</u>					
2004	1,283	1,202	1,260	1,195	4,940
2005	1,144	1,195	1,246	1,215	4,800
2006	1,157	1,202	1,253	1,246	4,858
2007	1,232	1,298	1,365	1,395	5,290
2008	1,350	1,320	1,341	1,288	5,299
2009	1,302	1,269	1,283	1,289	5,143
2010	1,316	1,344			

1/ December preceding year.

“The Three Little Pigs”
 Photographer ~~ Hanah Crowe
 Age 18, Bloomfield, IN



HOGS AND PIGS

HOG PRODUCTION AND DISPOSITION INDIANA, 2004-2010

Year	On Hand Dec 1 Preceding Year	Spring		Fall		Inship- ments	Market- ings ^{1/}	Farm Slaughter	Deaths
		Sows Farrowed	Pigs Born	Sows Farrowed	Pigs Born				
<u>Thousand Head</u>									
2004	3,100	280	2,485	275	2,455	1,530	6,099	1	270
2005	3,200	265	2,339	275	2,461	1,890	6,354	1	285
2006	3,250	265	2,359	280	2,499	1,925	6,427	1	255
2007	3,350	285	2,530	305	2,760	2,315	6,979	1	275
2008	3,700	295	2,670	285	2,629	2,718	7,916	1	250
2009	3,550	275	2,571	270	2,572	2,862	7,633	2	270
2010	3,600	280	2,660						

^{1/} Includes custom slaughter for use on farms where produced and State outshipments, but excludes interfarm sales within the State.

HOG PRODUCTION AND INCOME INDIANA, 2004-2009

Year	Production ^{1/}	Marketings ^{2/}	Price Per 100 Pounds	Cash Receipts ^{3/}	Value Home Consumption	Gross Income
	<u>Thousand Pounds</u>		<u>Dollars</u>		<u>Thousand Dollars</u>	
2004	1,424,664	1,462,584	48.90	732,113	752	732,865
2005	1,485,217	1,527,608	49.00	770,914	752	771,666
2006	1,484,896	1,529,705	45.00	714,114	689	714,803
2007	1,607,328	1,638,216	46.10	783,507	706	784,213
2008	1,726,027	1,803,710	49.10	917,338	756	918,094
2009	1,730,277	1,798,910	44.80	834,021	807	834,828

^{1/} Adjustments made for changes in inventory and for inshipments.

^{2/} Excludes custom slaughter for use on farms where produced and interfarm sales within the State.

^{3/} Includes allowance for higher average price of state inshipments and outshipments of feeder pigs. Receipts from marketings and sale of farm slaughter.

HOGS AND PIGS

INSHIPMENTS OF FEEDER PIGS DIRECT FROM STATES BY STATE OF ORIGIN, REPORTED BY STATE VETERINARIAN: INDIANA, 2004-2009

State of Origin	2004	2005	2006	2007	2008	2009
Number of Head						
Alabama	---	---	---	---	---	12,690
Arkansas	2,014	---	---	---	1,530	4,725
Colorado	1/	6,659	508	130	---	1/
Georgia	2,555	7,100	4,600	7,850	19,550	---
Idaho	---	---	---	---	---	7,818
Illinois	270,857	305,810	336,372	483,256	554,676	563,526
Iowa	9,507	30,965	4,230	22,637	65,079	35,037
Kansas	2,468	298	475	4,400	1/	1/
Kentucky	46,629	37,449	48,036	55,960	61,747	55,901
Michigan	99,685	186,563	147,661	250,570	202,278	297,335
Minnesota	750	889	1,155	1,050	19,785	1,280
Missouri	10,386	3,827	4,778	11,285	38,066	49,393
Nebraska	8,452	1/	1/	5,314	1/	6,999
New York	---	---	---	---	425	4,585
North Carolina	548,432	649,156	747,822	890,054	957,033	888,938
North Dakota	---	---	---	---	---	60,548
Ohio	234,832	256,663	321,436	355,033	372,315	279,152
Oklahoma	93,753	162,298	76,469	30,239	93,280	202,607
Oregon	---	---	---	---	---	2,200
Pennsylvania	4,320	---	2,200	3,200	27,694	15,150
South Carolina	29,590	37,250	19,630	6,600	10,450	31,250
South Dakota	770	---	400	2,000	---	1,100
Tennessee	5,252	19,892	5,407	3,250	---	---
Texas	628	1/	6,580	6,262	3,392	---
Virginia	---	375	---	---	---	---
West Virginia	---	---	---	---	600	---
Wisconsin	1/	---	---	6,500	6,300	6,862
Other States	40	25	8	---	35	44
Canada	102,591	124,835	169,225	176,318	279,035	190,505
Total	1,473,511	1,830,054	1,896,992	2,321,908	2,713,270	2,717,645

1/ Combined in "Other States".

INSHIPMENTS OF HOGS AND PIGS REPORTED BY STATE VETERINARIAN INDIANA, 2004-2009 1/

Year	Jan	Feb	Mar	Apr	May	Jun	Jul	Aug	Sep	Oct	Nov	Dec	Total
Number of Head													
2004	121,044	42,409	163,382	157,057	118,823	139,031	136,433	142,203	83,863	166,528	98,372	140,320	1,509,465
2005	146,945	146,979	157,980	140,976	186,059	170,897	146,942	180,478	57,570	258,546	157,058	123,127	1,873,557
2006	187,244	163,751	176,207	146,147	225,947	157,758	96,995	129,882	187,042	159,169	160,742	157,546	1,948,430
2007	194,702	184,799	181,481	230,322	33,891	189,383	219,426	318,891	213,037	251,342	193,299	232,772	2,443,345
2008	244,988	199,488	258,911	204,362	152,703	235,258	264,783	246,687	139,877	294,569	243,885	265,935	2,751,446
2009	226,662	273,587	197,587	224,441	178,867	369,272	255,789	224,019	219,163	210,489	215,499	215,993	2,811,368

1/ Includes both feeders and breeding stock.

HOGS AND PIGS

COMMERCIAL HOG SLAUGHTER BY MONTHS, INDIANA, 2004-2009 ^{1/}

Year	Jan	Feb	Mar	Apr	May	Jun	Jul	Aug	Sep	Oct	Nov	Dec	Total ^{2/}
Thousand Head													
2004	630.2	553.0	636.0	610.0	525.5	569.3	554.1	603.6	601.9	614.1	629.3	626.2	7,153.1
2005	574.3	549.6	615.8	570.9	530.6	581.5	525.4	634.6	605.7	624.7	648.7	613.1	7,075.0
2006	620.8	559.7	664.1	575.2	606.9	571.8	554.2	658.7	603.5	681.7	672.9	615.7	7,385.2
2007	676.2	564.5	658.1	605.7	622.2	591.2	616.5	666.9	587.8	759.1	720.6	693.2	7,762.1
2008	763.3	660.1	667.0	691.8	640.7	632.9	698.2	670.9	717.2	791.7	678.3	707.9	8,320.0
2009	700.1	658.8	704.4	700.3	630.2	702.5	725.1	708.7	764.3	789.9	711.8	733.5	8,529.6
Average Live Weight													
2004	264	263	261	262	261	258	257	256	260	262	266	267	261
2005	268	268	267	267	265	263	261	260	259	264	267	267	265
2006	270	267	266	267	264	260	257	256	261	266	267	265	264
2007	265	264	264	263	262	260	256	256	259	263	267	267	262
2008	269	265	265	262	260	259	256	255	258	263	267	268	262
2009	271	269	269	267	266	263	259	261	263	264	263	261	265
Total Live Weight (Thousand Pounds)													
2004	166,246	145,356	166,242	159,527	137,326	146,616	142,507	154,769	156,565	160,734	167,372	167,129	1,870,389
2005	153,724	147,119	164,721	152,272	140,842	152,975	137,325	165,090	156,834	164,739	173,406	163,990	1,873,037
2006	167,585	149,220	176,637	153,248	160,030	148,555	142,433	168,350	157,699	180,936	179,313	163,335	1,947,341
2007	179,392	148,746	173,426	159,017	162,784	153,592	157,899	170,691	152,432	199,179	191,935	184,842	2,033,934
2008	204,909	174,902	176,839	181,199	166,571	164,029	178,511	170,887	185,057	208,399	181,003	189,826	2,182,132
2009	189,318	177,422	189,337	186,967	167,832	184,474	187,947	184,763	201,053	208,674	187,278	191,263	2,256,328

^{1/} Includes custom slaughter, but excludes on-farm slaughter.
^{2/} Totals may not add due to rounding.

COMMERCIAL HOG SLAUGHTER NUMBER OF HEAD, INDIANA, 2004-2009

