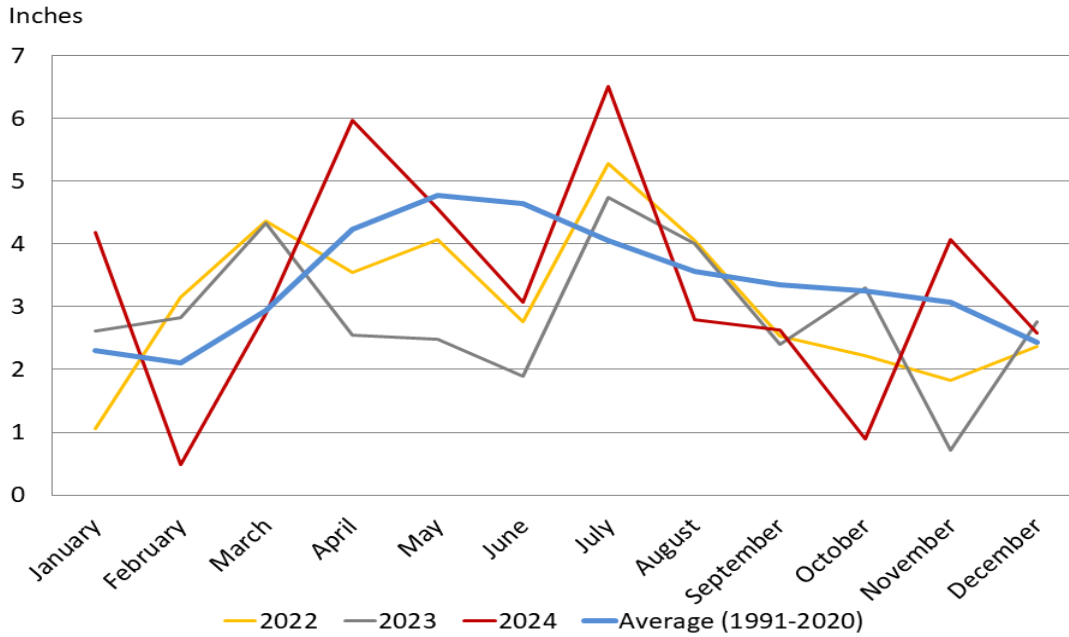
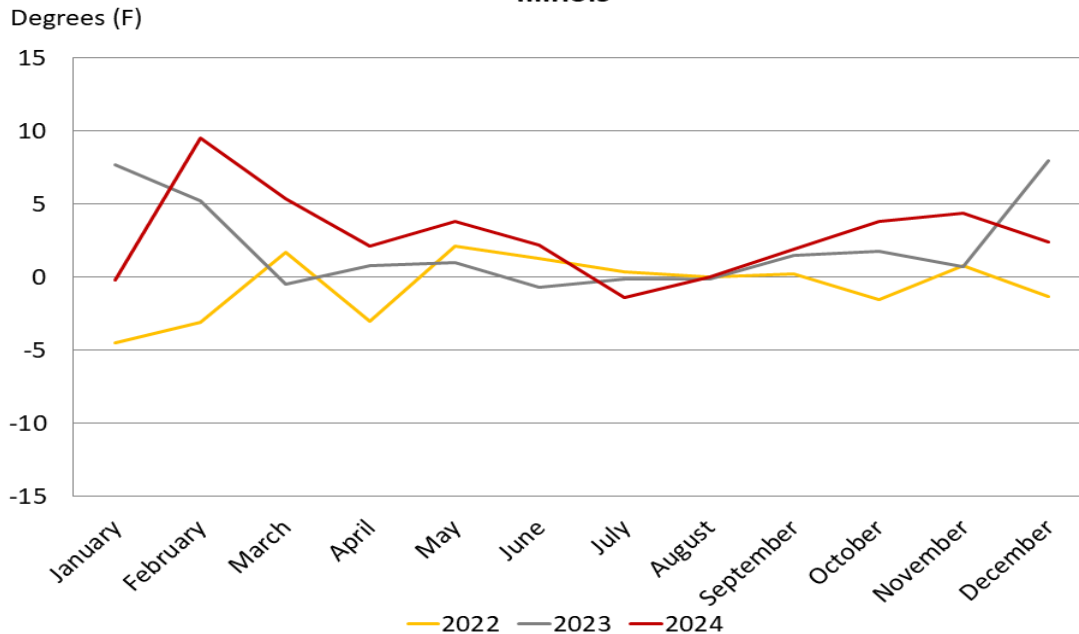


Annual Weather Summary – Illinois 2024

Precipitation by Month Illinois



Temperature Departure from Normal Illinois



Precipitation by District – Illinois: Average (1981-2010), 2023, and 2024

District and State	Jan	Feb	Mar	Apr	May	Jun	Jul	Aug	Sep	Oct	Nov	Dec	Annual
	(inches)	(inches)	(inches)	(inches)	(inches)	(inches)	(inches)	(inches)	(inches)	(inches)	(inches)	(inches)	(inches)
Northwest													
Average	1.61	1.73	2.41	3.73	4.61	5.09	4.12	3.92	3.64	2.93	2.41	1.97	38.16
2023	2.25	3.25	2.39	2.79	2.40	1.73	5.09	2.14	3.62	4.07	0.79	2.58	33.10
2024	2.60	0.32	3.68	5.40	3.96	4.56	6.60	3.24	0.94	1.42	2.78	1.36	36.86
Northeast													
Average	1.91	1.77	2.30	3.73	4.56	4.57	3.92	3.90	3.39	3.21	2.51	2.05	37.82
2023	2.27	3.42	2.63	2.57	1.71	1.82	6.80	2.42	4.06	3.85	0.93	2.67	35.15
2024	3.32	0.56	3.99	4.66	4.53	4.90	5.43	3.06	1.56	1.03	3.09	1.35	37.48
West													
Average	1.76	1.87	2.49	3.93	5.02	4.77	4.01	3.72	3.60	3.10	2.57	2.00	38.84
2023	1.68	3.07	3.09	2.01	2.36	1.66	3.84	4.79	1.42	2.77	0.68	3.03	30.40
2024	3.20	0.21	3.30	6.86	3.57	2.73	7.01	2.79	1.26	1.77	3.16	2.11	37.97
Central													
Average	2.06	1.88	2.57	3.88	4.63	4.32	4.04	3.55	3.29	3.20	2.77	2.16	38.35
2023	1.88	2.77	3.39	2.01	2.21	1.74	4.16	4.32	3.35	3.41	0.90	2.83	32.97
2024	3.71	0.38	2.51	6.24	3.29	3.13	5.49	3.92	1.16	0.90	4.34	1.91	36.98
East													
Average	2.22	1.90	2.57	3.86	4.49	4.65	4.27	3.58	3.19	3.25	2.90	2.22	39.10
2023	1.94	3.12	3.76	1.86	1.97	1.58	4.76	4.43	2.56	4.34	0.78	3.05	34.15
2024	4.57	0.59	2.36	6.58	4.39	2.65	5.87	3.96	1.52	0.70	3.92	2.27	39.38
West Southwest													
Average	2.30	2.05	2.95	4.37	4.80	4.50	3.91	3.44	3.24	3.20	3.12	2.31	40.17
2023	2.10	2.26	4.04	2.22	3.18	2.22	3.47	4.37	1.24	3.33	0.68	3.15	32.26
2024	3.96	0.36	2.97	6.33	5.13	2.01	6.84	2.53	2.91	0.91	6.42	2.28	42.65
East Southeast													
Average	2.84	2.31	3.30	4.71	4.79	4.86	4.19	3.27	3.18	3.55	3.69	2.76	43.44
2023	2.98	1.97	6.09	2.62	2.72	2.75	3.72	4.49	1.55	2.68	0.53	2.51	34.61
2024	5.52	0.57	2.24	7.06	4.09	1.79	7.72	2.10	3.24	0.27	4.33	3.25	42.18
Southwest													
Average	3.00	2.74	3.96	5.05	5.11	4.41	3.98	3.23	3.27	3.39	3.95	3.15	45.22
2023	4.04	2.70	6.94	3.44	2.35	1.32	6.25	4.88	1.67	2.26	0.52	2.23	38.60
2024	5.46	0.61	2.51	5.43	6.87	3.27	7.25	1.62	5.58	0.67	4.64	4.21	48.12
Southeast													
Average	3.38	3.03	4.32	5.12	5.04	4.58	4.11	3.32	3.38	3.55	4.08	3.54	47.45
2023	4.77	3.07	7.61	3.47	3.21	1.52	5.07	4.72	1.78	2.51	0.48	2.19	40.40
2024	5.96	0.79	2.27	5.03	5.96	2.59	6.32	1.71	6.69	0.35	3.66	5.39	46.72
Illinois													
Average	2.31	2.11	2.94	4.24	4.77	4.65	4.06	3.56	3.35	3.26	3.08	2.43	40.75
2023	2.59	2.82	4.33	2.53	2.47	1.86	4.73	4.00	2.38	3.28	0.71	2.71	34.41
2024	4.19	0.48	2.90	5.98	4.57	3.07	6.52	2.79	2.63	0.90	4.08	2.58	40.69

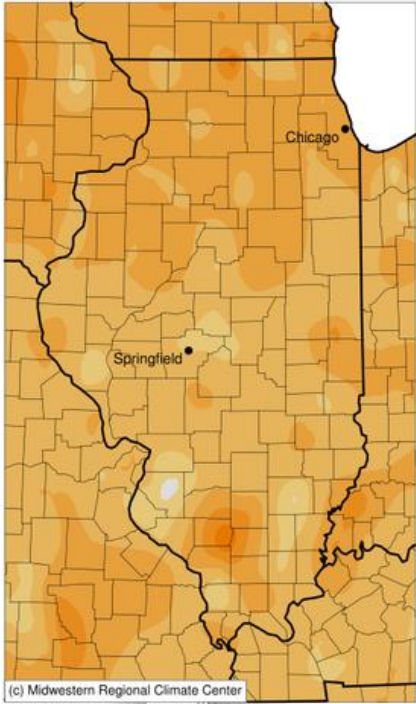
Weather data provided by: NOAA National Centers for Environmental information, Climate at a Glance: Divisional Time Series, published January 2025, retrieved on January 24, 2025 from <https://www.ncei.noaa.gov/access/monitoring/climate-at-a-glance/divisional/time-series>

Temperature by District – Illinois: Average (1981-2010), 2023, and 2024

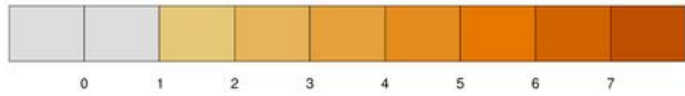
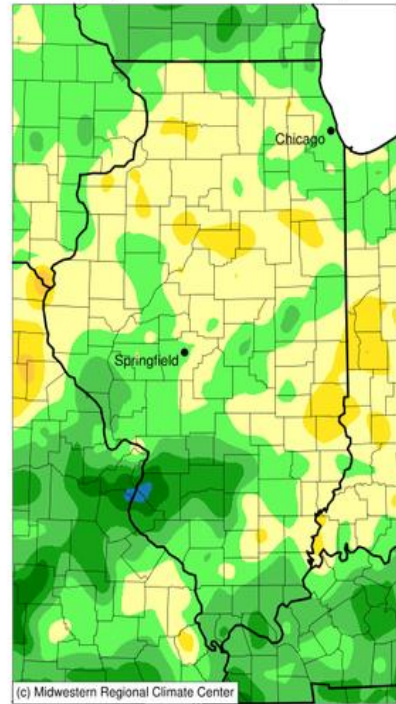
District and State	Jan	Feb	Mar	Apr	May	Jun	Jul	Aug	Sep	Oct	Nov	Dec	Annual
	(F)	(F)	(F)	(F)	(F)	(F)	(F)	(F)	(F)	(F)	(F)	(F)	(F)
Northwest													
Average	21.6	26.0	37.6	49.3	60.7	70.1	73.4	71.3	64.3	52.0	38.8	27.2	49.4
2023	28.9	30.0	37.0	50.2	62.1	70.2	72.9	71.7	66.9	54.4	39.2	36.5	51.7
2024	22.8	37.7	43.2	51.2	64.4	72.7	72.0	71.6	67.1	56.8	43.4	29.3	52.7
Northeast													
Average	22.9	26.9	37.5	48.9	60.0	69.6	73.5	71.6	64.7	52.4	39.5	28.3	49.7
2023	30.6	31.3	37.1	50.2	60.8	68.9	73.0	71.5	66.4	54.2	40.0	37.4	51.8
2024	24.4	37.8	43.1	51.3	64.0	72.5	72.5	72.2	67.7	57.3	44.9	30.2	53.2
West													
Average	24.9	29.6	40.6	52.0	62.9	72.1	75.3	73.4	66.3	54.1	41.3	30.2	51.9
2023	31.7	34.1	39.6	53.2	64.2	72.1	75.1	73.5	68.4	56.4	42.0	39.0	54.1
2024	24.2	40.6	45.7	53.8	66.5	74.8	73.6	73.2	68.4	58.9	45.0	32.7	54.8
Central													
Average	25.2	29.7	40.5	52.0	63.0	71.9	74.9	72.9	66.3	54.2	41.3	30.4	51.9
2023	33.5	35.4	40.5	53.2	64.6	71.7	74.8	73.1	68.1	56.2	42.3	39.2	54.4
2024	25.4	39.3	46.3	53.6	66.8	74.4	73.2	72.8	67.7	58.1	45.6	33.1	54.7
East													
Average	25.2	29.5	40.0	51.3	62.4	71.5	74.2	72.3	66.1	54.1	41.1	30.4	51.5
2023	33.6	35.0	39.4	52.0	63.6	70.4	73.7	72.0	67.0	55.6	41.7	38.6	53.6
2024	25.8	38.5	45.8	53.0	66.2	73.7	72.8	72.4	67.8	58.1	45.5	32.5	54.3
West Southwest													
Average	28.4	33.0	43.0	54.1	64.4	73.3	76.4	74.7	67.7	56.0	43.5	33.1	54.0
2023	35.6	37.7	42.3	55.0	65.3	72.5	76.5	74.4	69.3	57.6	44.3	41.0	56.0
2024	27.2	42.1	48.4	56.0	68.2	75.9	74.7	74.7	69.1	59.4	47.3	35.9	56.6
East Southeast													
Average	28.9	33.2	43.1	54.1	64.5	73.2	76.2	74.5	67.8	56.1	43.6	33.5	54.1
2023	37.4	39.5	42.8	54.5	64.9	71.8	76.5	74.2	69.1	57.6	44.8	41.0	56.2
2024	28.3	41.6	48.7	56.3	68.2	74.6	74.4	74.1	69.3	59.0	48.0	36.0	56.5
Southwest													
Average	32.4	36.9	46.1	56.6	66.2	74.8	78.1	76.4	69.2	57.9	45.7	36.3	56.4
2023	40.0	42.8	45.4	56.7	66.6	73.8	78.5	76.4	70.7	59.3	46.8	42.9	58.3
2024	30.5	45.2	50.9	59.3	70.0	76.3	76.6	76.5	70.6	60.2	50.1	38.9	58.8
Southeast													
Average	32.6	36.9	46.0	56.5	66.0	74.5	77.7	76.1	69.3	57.8	45.8	36.4	56.3
2023	40.7	43.6	45.5	56.5	66.0	73.2	78.4	75.7	70.2	59.3	46.7	42.7	58.2
2024	31.1	44.5	50.6	59.2	69.7	75.7	76.8	76.3	71.2	60.3	50.7	38.9	58.8
Illinois													
Average	26.7	31.1	41.4	52.6	63.3	72.2	75.4	73.6	66.8	54.9	42.2	31.6	52.7
2023	34.4	36.3	40.9	53.4	64.2	71.5	75.4	73.5	68.4	56.6	43.0	39.7	54.8
2024	26.5	40.6	46.8	54.7	67.0	74.4	74.0	73.6	68.7	58.6	46.6	34.0	55.5

Weather data provided by: NOAA National Centers for Environmental information, Climate at a Glance: Divisional Time Series, published January 2025, retrieved on January 24, 2025 from <https://www.ncei.noaa.gov/access/monitoring/climate-at-a-glance/divisional/time-series>

Average Temperature (°F): Departure from 1991-2020 Normals
January 01, 2024 to December 31, 2024

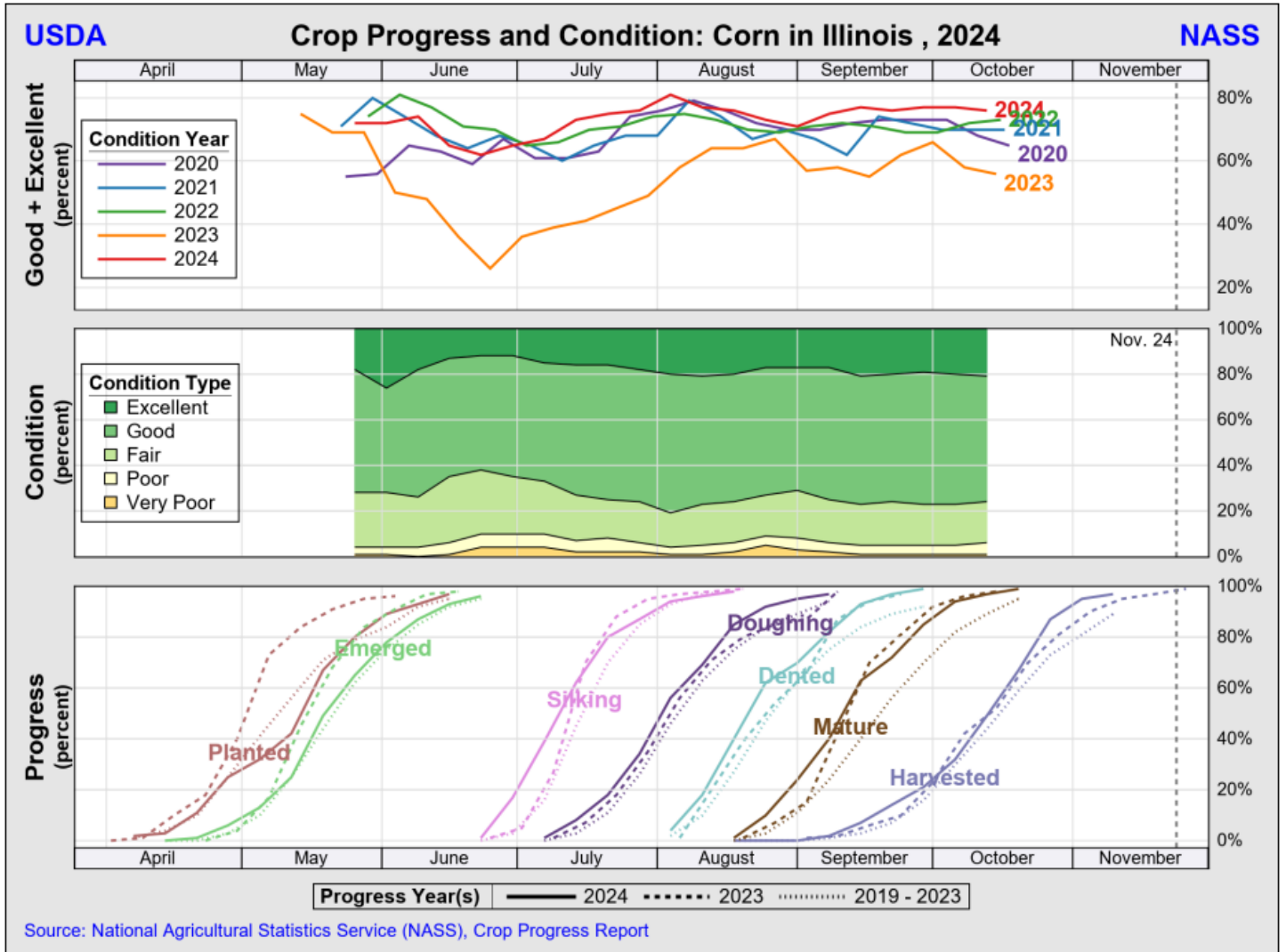


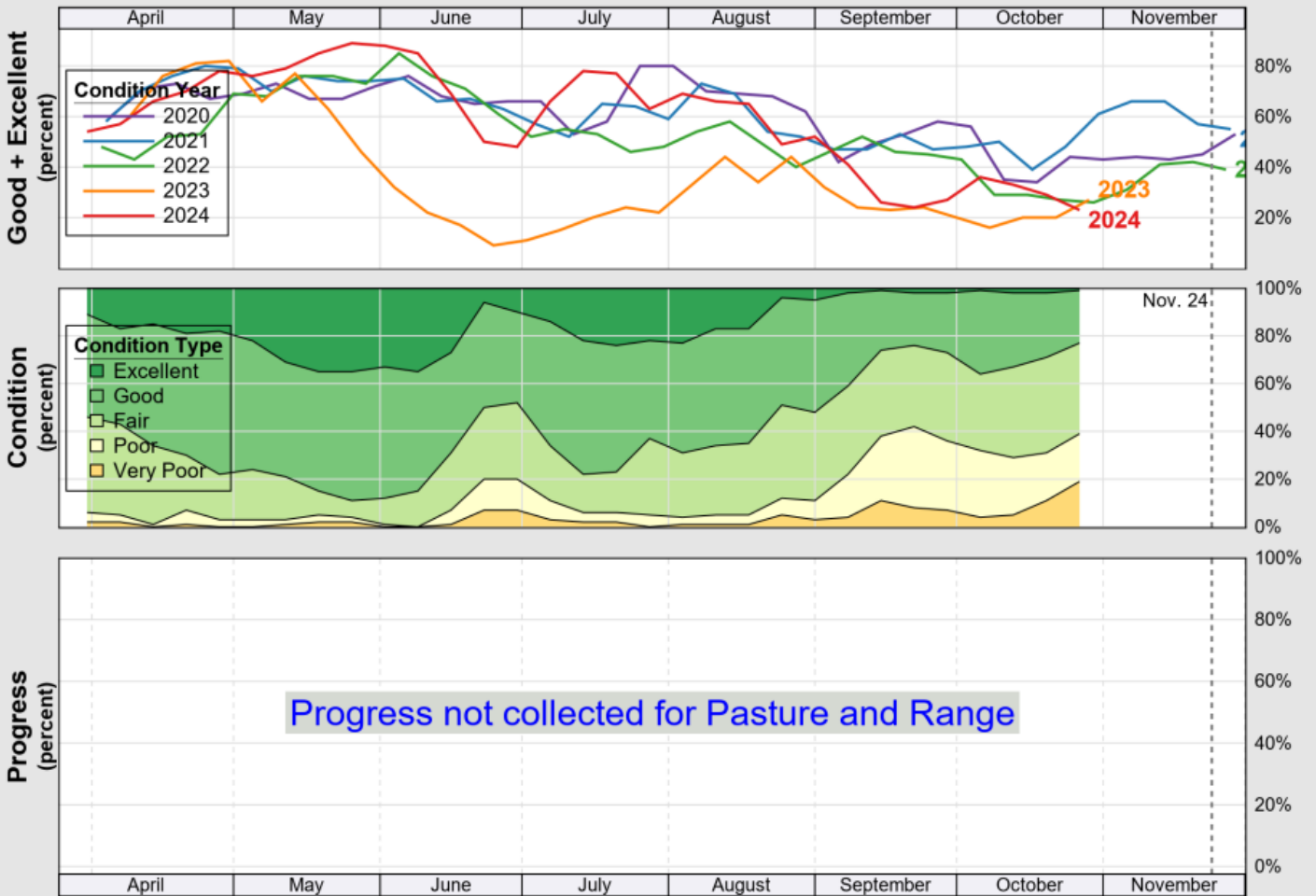
Accumulated Precipitation (in): Departure from 1991-2020 Normals
January 01, 2024 to December 31, 2024



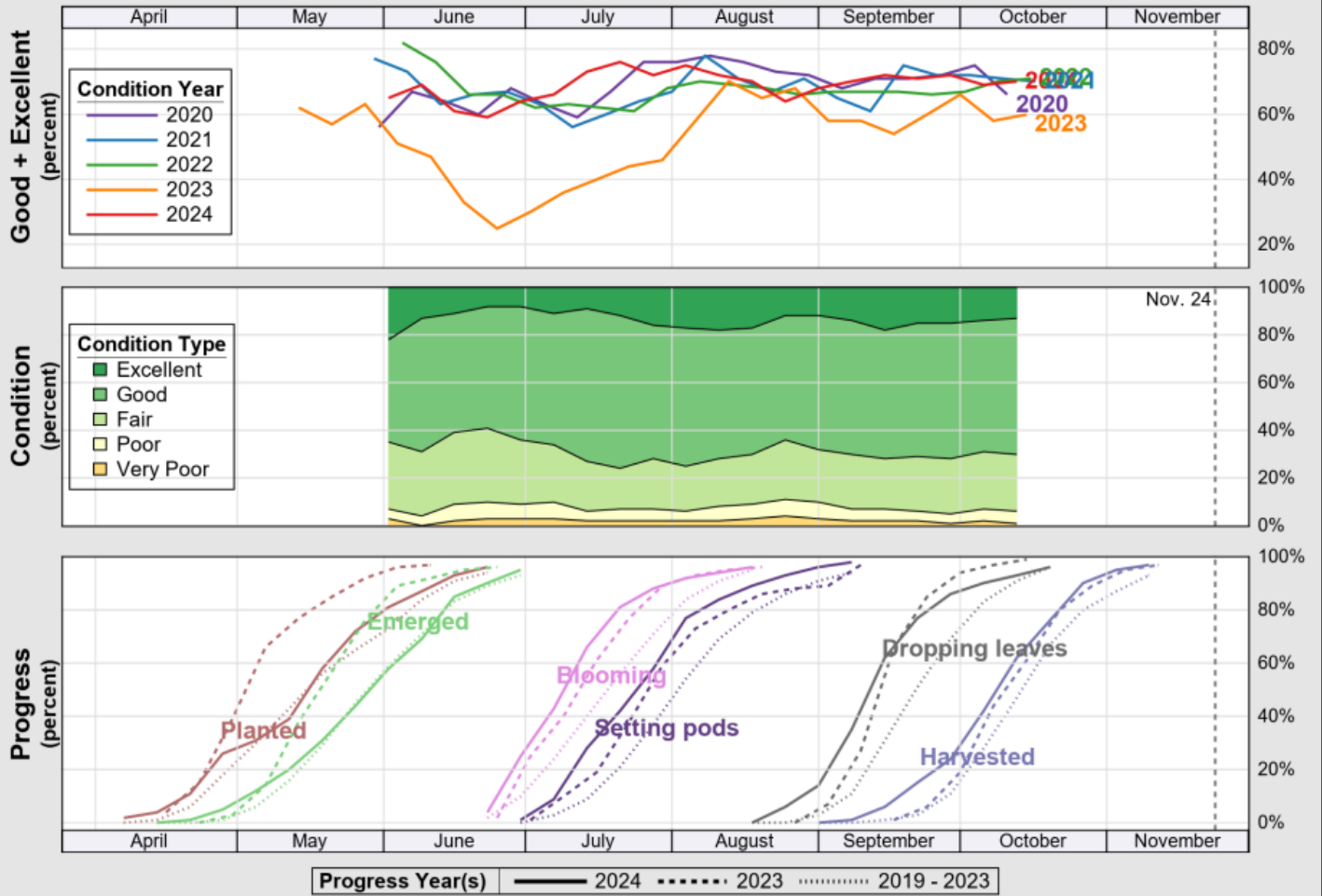
Maps provided by the Midwestern Regional Climate Center: <https://mrcc.purdue.edu/>

Annual Crop Progress and Condition Summary – Illinois 2024

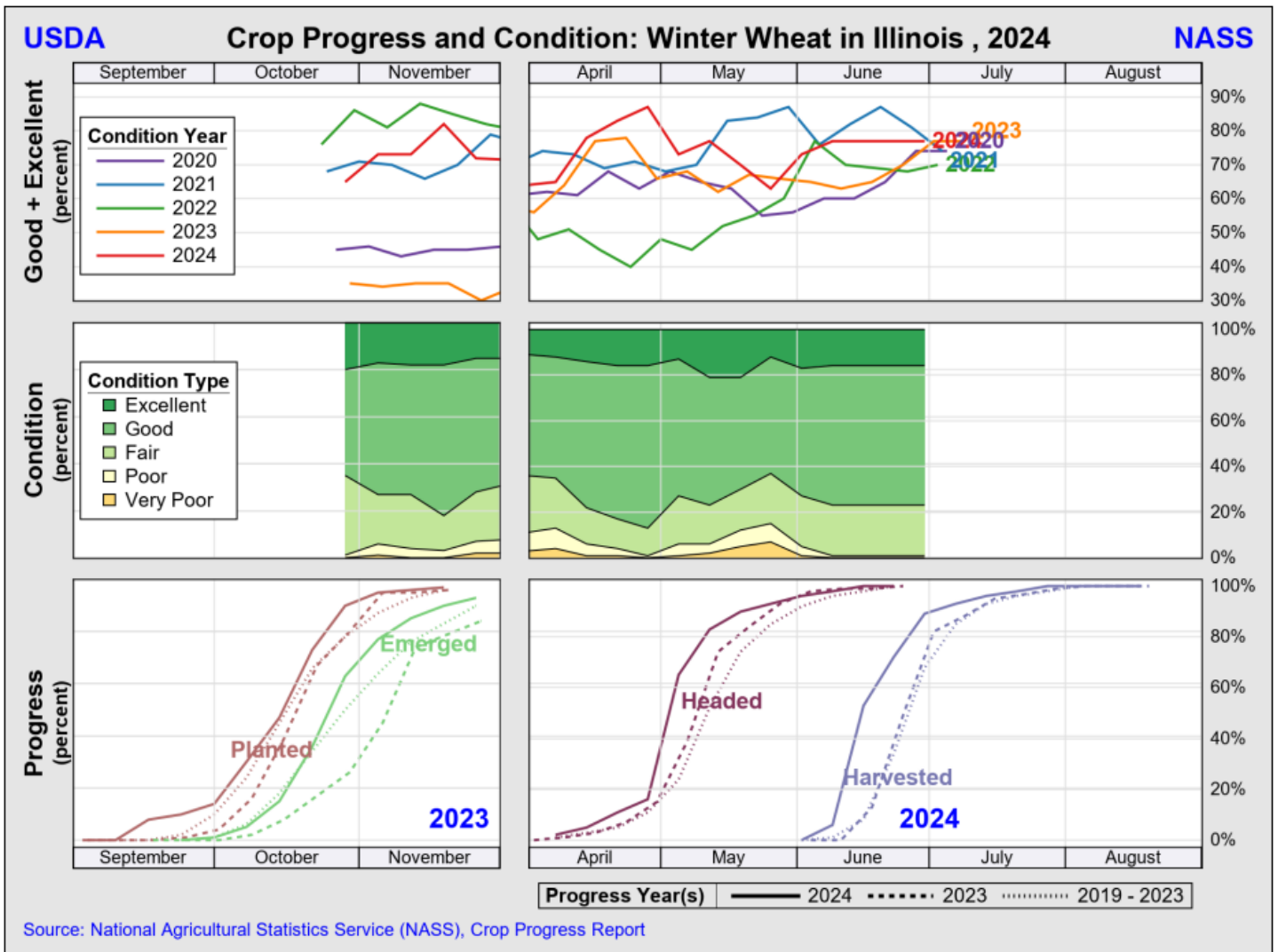




Source: National Agricultural Statistics Service (NASS), Crop Progress Report



Source: National Agricultural Statistics Service (NASS), Crop Progress Report



Access to NASS Reports

For your convenience, you may access NASS reports and products the following ways:

- All reports are available electronically, at no cost, on the NASS web site: <http://www.nass.usda.gov>
- Both national and state specific reports are available via a free e-mail subscription. To set-up this free subscription, visit <http://www.nass.usda.gov> and in the “Follow NASS” box under “Receive reports by Email,” click on “National” or “State” to select the reports you would like to receive.
- Follow us on X @usda_nass

For more information on NASS surveys and reports, call the Heartland Regional Field Office at (314) 595-9594 or e-mail: nassrfohlr@usda.gov.