



Illinois Crop Progress and Condition

Released November 4, 2024

There were 5.7 days suitable for fieldwork in the week ending November 3, 2024. Statewide, the average temperature was 56.7 degrees, 6.0 degrees above normal. Precipitation averaged 0.64 inches, 0.18 inches below normal. Topsoil moisture supply was rated 22 percent very short, 43 percent short, 32 percent adequate, and 3 percent surplus. Subsoil moisture supply was rated 19 percent very short, 49 percent short, 31 percent adequate, and 1 percent surplus. Corn harvested reached 95 percent, compared to the 5-year average of 81 percent. Soybeans harvested reached 95 percent, compared to the 5-year average of 87 percent. Winter wheat planted reached 92 percent, compared to the 5-year average of 87 percent. Winter wheat emerged reached 69 percent, compared to the 5-year average of 62 percent. Winter wheat condition was rated 5 percent very poor, 6 percent poor, 21 percent fair, 64 percent good, and 4 percent excellent.

Days Suitable for Fieldwork and Soil Moisture Supply: Week Ending November 3, 2024

State	Days Suitable for Fieldwork	Topsoil Moisture Supply				Subsoil Moisture Supply			
		Very Short	Short	Adequate	Surplus	Very Short	Short	Adequate	Surplus
		(percent)	(percent)	(percent)	(percent)	(percent)	(percent)	(percent)	(percent)
Illinois	5.7	22	43	32	3	19	49	31	1

Crop Progress – Illinois

Item	Week ending			2019-2023 Average
	November 3, 2024	October 27, 2024	November 3, 2023	
	(percent)	(percent)	(percent)	(percent)
Corn harvested	95	87	87	81
Soybeans harvested	95	90	93	87
Winter wheat planted	92	85	94	87
Winter wheat emerged	69	55	73	62

Winter Wheat Condition – Illinois

Date	Very Poor	Poor	Fair	Good	Excellent
	(percent)	(percent)	(percent)	(percent)	(percent)
November 3, 2024	5	6	21	64	4
October 27, 2024	4	6	39	47	4
November 3, 2023	1	5	21	56	17

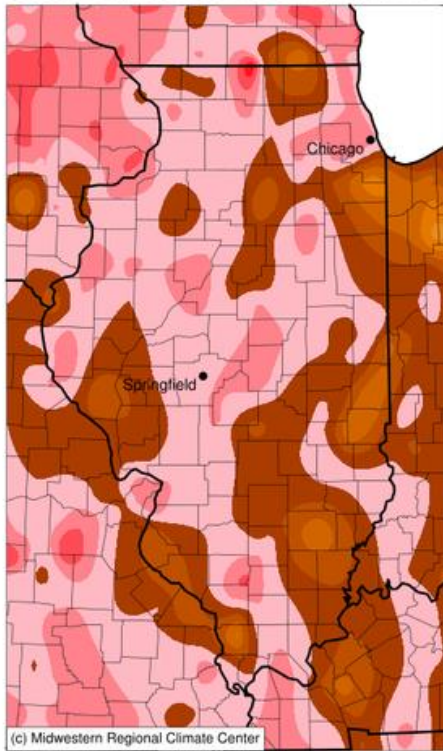
Weather Information: Week Ending November 3, 2024

District and State	Temperature		Precipitation	
	Average	Departure from Normal	Total	Departure from Normal
	(degrees - F)	(degrees - F)	(inches)	(inches)
Northwest	54.5	7.1	0.71	-0.15
Northeast	54.3	6.1	0.14	-0.66
West	56.8	6.5	1.13	0.18
Central	55.6	5.7	0.57	-0.26
East	55.2	5.4	0.39	-0.37
West Southwest	58.9	7.0	0.69	-0.15
East Southeast	57.7	5.2	0.49	-0.26
Southwest	59.2	5.2	0.88	0.08
Southeast	59.2	4.8	0.96	0.21
Illinois	56.7	6.0	0.64	-0.18

provided by the Midwestern Regional Climate Center: <https://mrcc.purdue.edu/>

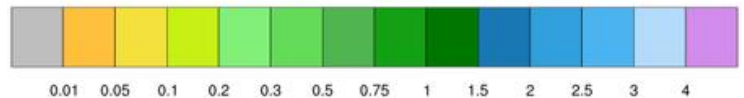
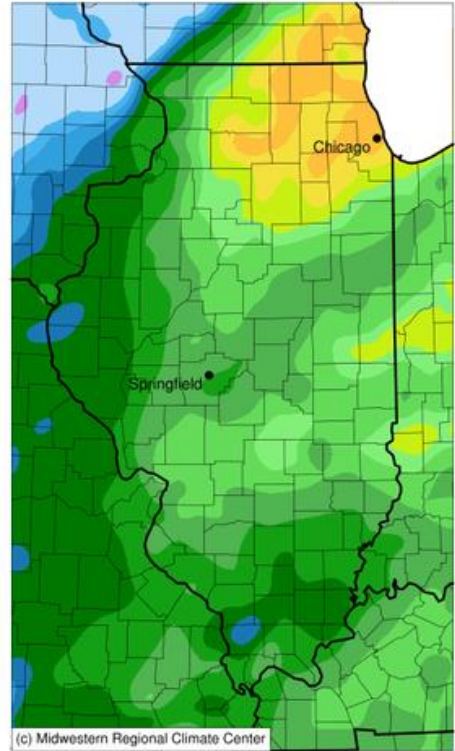
Average Temperature (°F): Departure from 1991-2020 Normals

October 28, 2024 to November 03, 2024

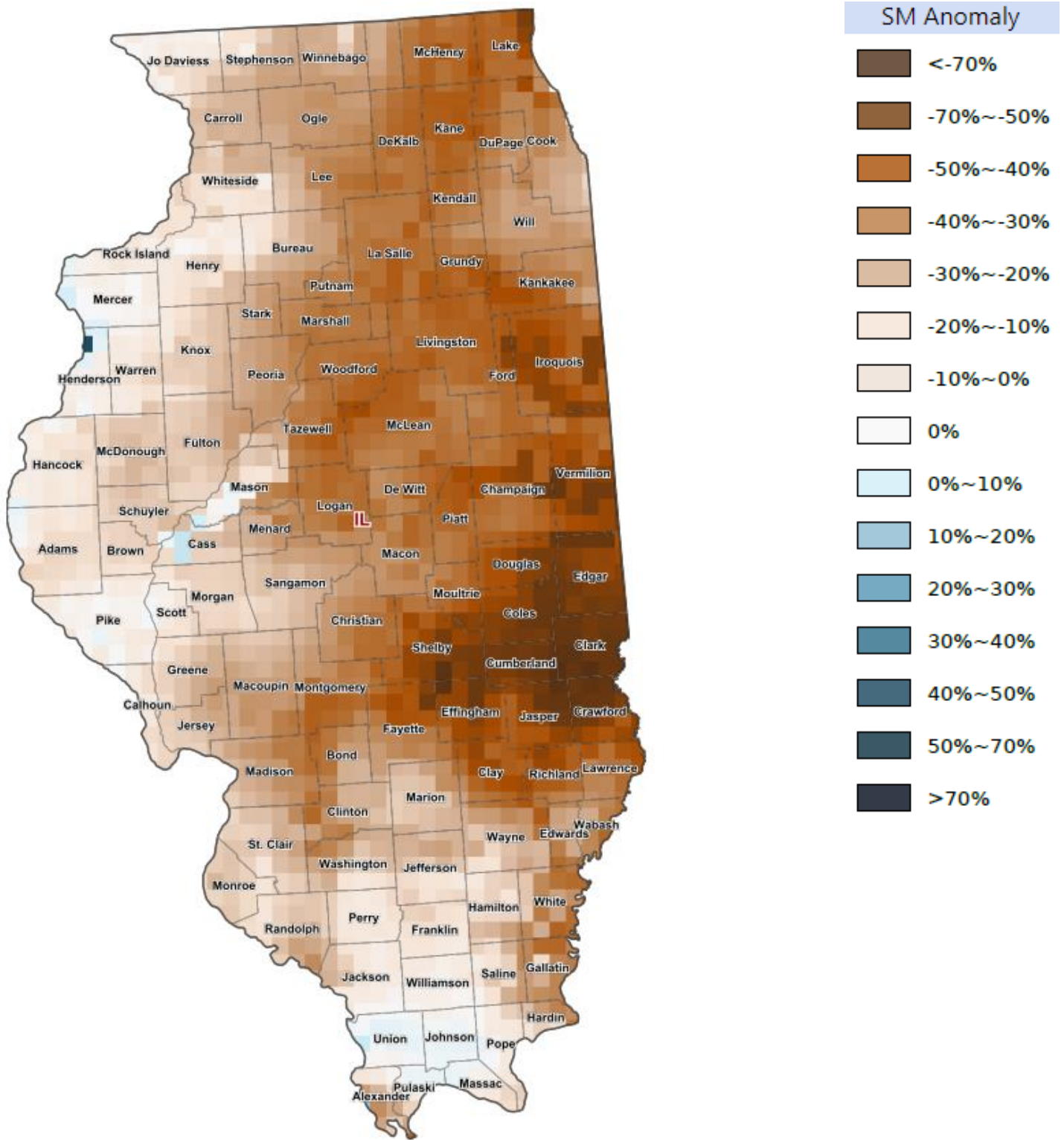


Accumulated Precipitation (in)

October 28, 2024 to November 03, 2024



Soil Moisture Deviation from Historical Average – October 31, 2024



<https://cloud.csiss.gmu.edu/Crop-CASMA/>
(historical average includes 2015 to current)

Access to NASS Reports

For your convenience, you may access NASS reports and products the following ways:

- All reports are available electronically, at no cost, on the NASS web site: <http://www.nass.usda.gov>
- Both national and state specific reports are available via a free e-mail subscription. To set-up this free subscription, visit <http://www.nass.usda.gov> and in the “Follow NASS” box under “Receive reports by Email,” click on “National” or “State” to select the reports you would like to receive.
- Follow us on X @usda_nass

For more information on NASS surveys and reports, call the Heartland Regional Field Office at (314) 595-9594 or e-mail: nassrfohlr@usda.gov.