



Illinois Crop Progress and Condition

Released October 28, 2024

There were 6.6 days suitable for fieldwork in the week ending October 27, 2024. Statewide, the average temperature was 55.2 degrees, 2.9 degrees above normal. Precipitation averaged 0.28 inches, 0.31 inches below normal. Topsoil moisture supply was rated 28 percent very short, 52 percent short, and 20 percent adequate. Subsoil moisture supply was rated 24 percent very short, 52 percent short, and 24 percent adequate. Corn harvested reached 87 percent, compared to the 5-year average of 73 percent. Soybeans harvested reached 90 percent, compared to the 5-year average of 80 percent. Winter wheat planted reached 85 percent, compared to the 5-year average of 79 percent. Winter wheat emerged reached 55 percent, compared to the 5-year average of 48 percent. Winter wheat condition was rated 4 percent very poor, 6 percent poor, 39 percent fair, 47 percent good, and 4 percent excellent.

Days Suitable for Fieldwork and Soil Moisture Supply: Week Ending October 27, 2024

State	Days Suitable for Fieldwork	Topsoil Moisture Supply				Subsoil Moisture Supply			
		Very Short	Short	Adequate	Surplus	Very Short	Short	Adequate	Surplus
Illinois	6.6	(percent)	(percent)	(percent)	(percent)	(percent)	(percent)	(percent)	(percent)
		28	52	20	-	24	52	24	-

- Represents zero.

Crop Progress – Illinois

Item	Week ending			2019-2023 Average
	October 27, 2024	October 20, 2024	October 27, 2023	
	(percent)	(percent)	(percent)	(percent)
Corn harvested	87	67	78	73
Soybeans harvested	90	76	86	80
Winter wheat planted	85	60	85	79
Winter wheat emerged	55	33	55	48

Winter Wheat Condition – Illinois

Date	Very Poor	Poor	Fair	Good	Excellent
	(percent)	(percent)	(percent)	(percent)	(percent)
October 27, 2024	4	6	39	47	4
October 27, 2023	-	1	34	45	20

- Represents zero.

Pasture Condition – Illinois

Date	Very Poor (percent)	Poor (percent)	Fair (percent)	Good (percent)	Excellent (percent)
October 27, 2024	19	20	38	22	1
October 20, 2024	11	20	40	27	2
October 27, 2023	27	14	32	26	1

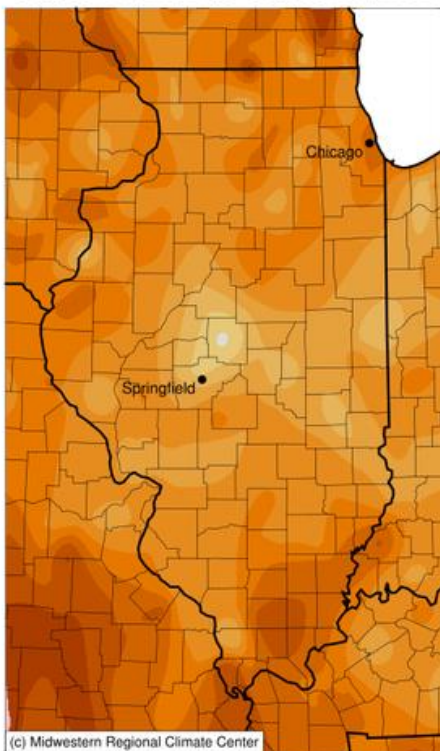
Weather Information: Week Ending October 27, 2024

District and State	Temperature		Precipitation	
	Average	Departure from Normal	Total	Departure from Normal
	(degrees - F)	(degrees - F)	(inches)	(inches)
Northwest	52.9	3.2	0.63	0.10
Northeast	53.4	3.4	0.71	0.19
West	55.0	2.6	0.35	-0.22
Central	54.1	2.4	0.30	-0.26
East	53.8	2.5	0.20	-0.38
West Southwest	55.8	2.4	0.18	-0.43
East Southeast	55.9	2.3	0.04	-0.61
Southwest	58.2	3.4	0.02	-0.66
Southeast	58.7	3.8	0.02	-0.65
Illinois	55.2	2.9	0.28	-0.31

Weather data provided by the Midwestern Regional Climate Center: <https://mrcc.purdue.edu/>

Average Temperature (°F): Departure from 1991-2020 Normals

October 21, 2024 to October 27, 2024

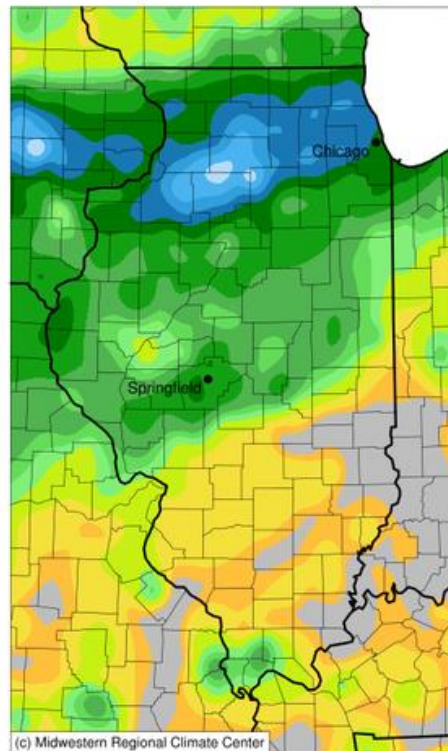


(c) Midwestern Regional Climate Center

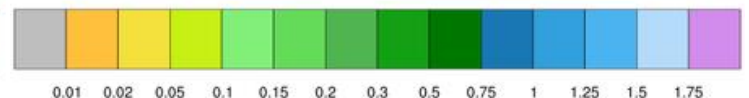


Accumulated Precipitation (in)

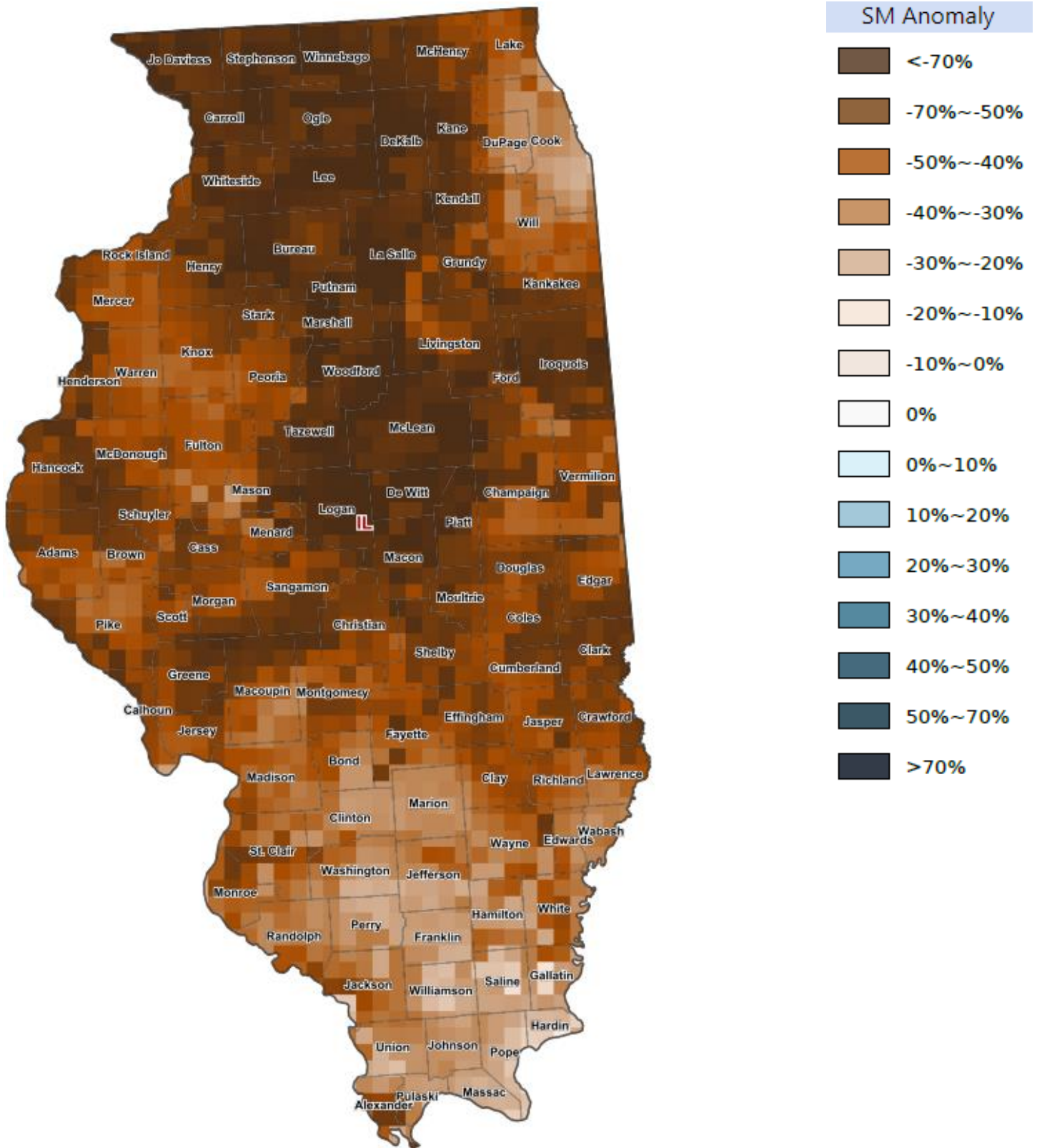
October 21, 2024 to October 27, 2024



(c) Midwestern Regional Climate Center



Soil Moisture Deviation from Historical Average – October 24, 2024



<https://cloud.csiss.gmu.edu/Crop-CASMA/>
(historical average includes 2015 to current)

Access to NASS Reports

For your convenience, you may access NASS reports and products the following ways:

- All reports are available electronically, at no cost, on the NASS web site: <http://www.nass.usda.gov>
- Both national and state specific reports are available via a free e-mail subscription. To set-up this free subscription, visit <http://www.nass.usda.gov> and in the “Follow NASS” box under “Receive reports by Email,” click on “National” or “State” to select the reports you would like to receive.
- Follow us on X @usda_nass

For more information on NASS surveys and reports, call the Heartland Regional Field Office at (314) 595-9594 or e-mail: nassrfohlr@usda.gov.