



# Illinois Crop Progress and Condition

Released October 21, 2024

There were 7.0 days suitable for fieldwork in the week ending October 20, 2024. Statewide, the average temperature was 51.2 degrees, 2.7 degrees below normal. Precipitation averaged 0.03 inches, 0.69 inches below normal. Topsoil moisture supply was rated 24 percent very short, 49 percent short, and 27 percent adequate. Subsoil moisture supply was rated 18 percent very short, 46 percent short, and 36 percent adequate. Corn harvested reached 67 percent, compared to the 5-year average of 59 percent. Soybeans dropping leaves reached 96 percent, equal to the 5-year average. Soybeans harvested reached 76 percent, compared to the 5-year average of 67 percent. Winter wheat planted reached 60 percent, compared to the 5-year average of 64 percent. Winter wheat emerged reached 33 percent, compared to the 5-year average of 29 percent.

## Days Suitable for Fieldwork and Soil Moisture Supply: Week Ending October 20, 2024

State	Days Suitable for Fieldwork	Topsoil Moisture Supply				Subsoil Moisture Supply			
		Very Short	Short	Adequate	Surplus	Very Short	Short	Adequate	Surplus
Illinois .....	7.0	(percent)	(percent)	(percent)	(percent)	(percent)	(percent)	(percent)	(percent)
		24	49	27	-	18	46	36	-

- Represents zero.

## Crop Progress – Illinois

Item	Week ending			2019-2023 Average
	October 20, 2024	October 13, 2024	October 20, 2023	
	(percent)	(percent)	(percent)	(percent)
Corn harvested .....	67	49	65	59
Soybeans dropping leaves .....	96	93	99	96
Soybeans harvested .....	76	62	75	67
Winter wheat planted .....	60	33	66	64
Winter wheat emerged .....	33	9	30	29

## Pasture Condition – Illinois

Date	Very Poor	Poor	Fair	Good	Excellent
	(percent)	(percent)	(percent)	(percent)	(percent)
October 20, 2024 .....	11	20	40	27	2
October 13, 2024 .....	5	24	38	31	2
October 20, 2023 .....	21	24	35	20	-

- Represents zero.

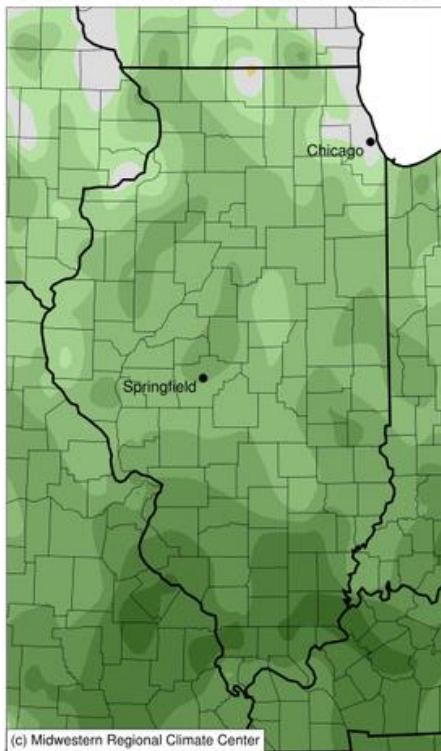
# Weather Information: Week Ending October 20, 2024

District and State	Temperature		Precipitation	
	Average	Departure from Normal	Total	Departure from Normal
	(degrees - F)	(degrees - F)	(inches)	(inches)
Northwest .....	50.6	-0.4	0.00	-0.75
Northeast .....	50.8	-0.5	0.17	-0.56
West .....	51.6	-2.3	0.00	-0.66
Central .....	50.9	-2.5	0.00	-0.65
East .....	50.5	-2.4	0.04	-0.64
West Southwest .....	52.2	-3.0	0.00	-0.68
East Southeast .....	51.5	-3.7	0.00	-0.74
Southwest .....	51.0	-5.4	0.01	-0.81
Southeast .....	51.8	-4.8	0.01	-0.78
Illinois .....	51.2	-2.7	0.03	-0.69

provided by the Midwestern Regional Climate Center: <https://mrcc.purdue.edu/>

## Average Temperature (°F): Departure from 1991-2020 Normals

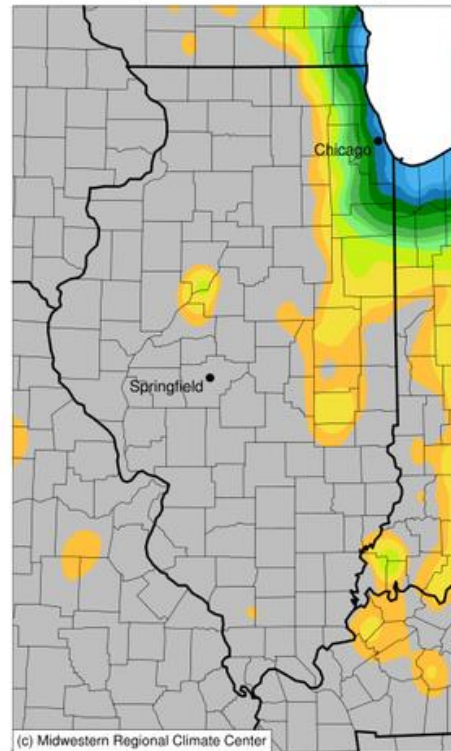
October 14, 2024 to October 20, 2024



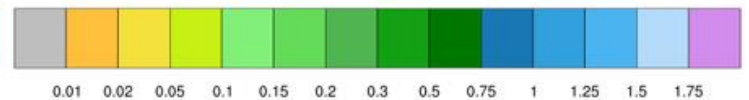
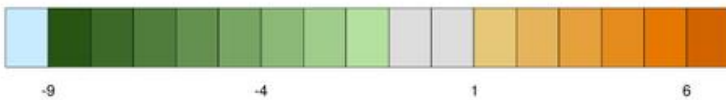
(c) Midwestern Regional Climate Center

## Accumulated Precipitation (in)

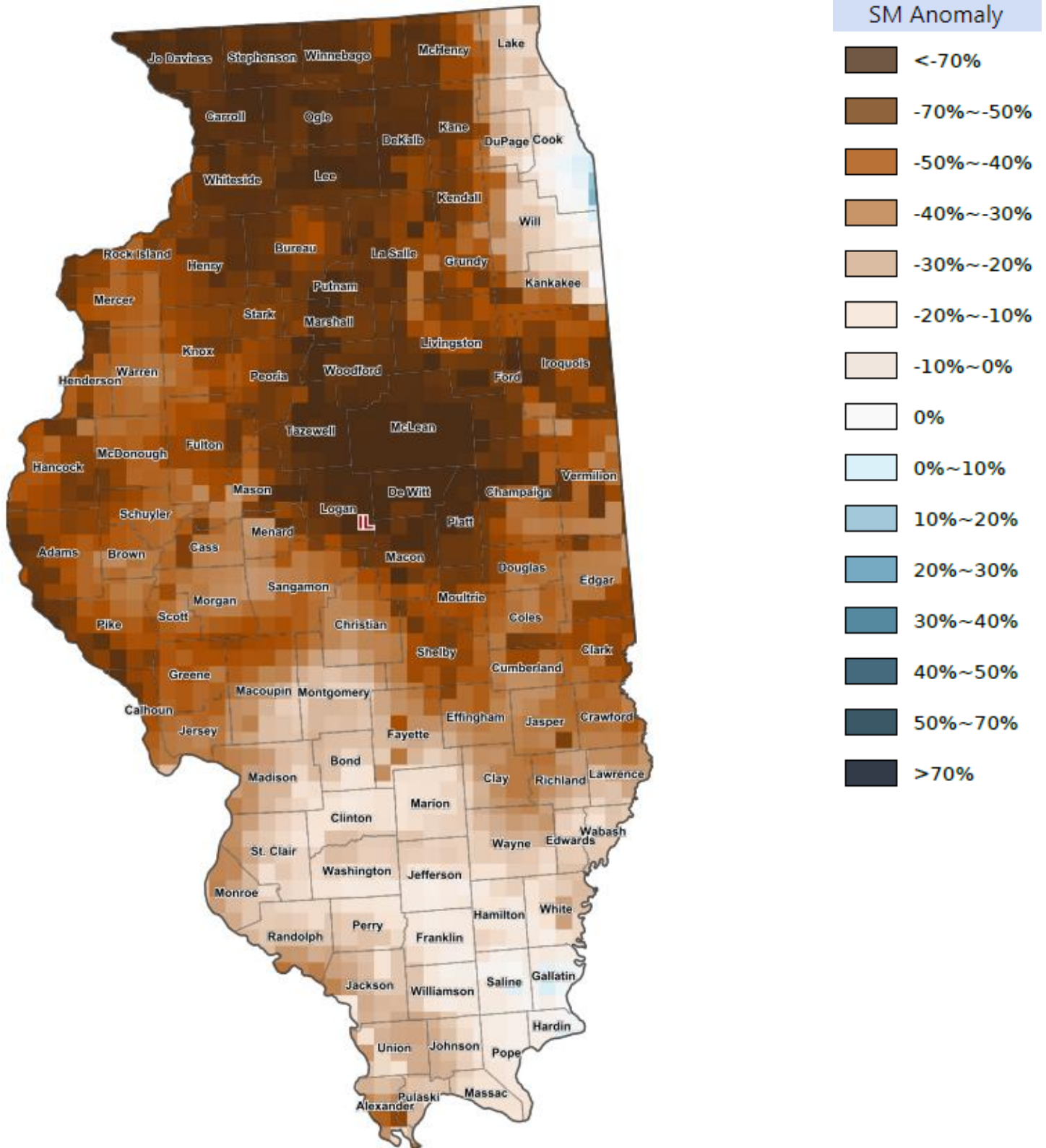
October 14, 2024 to October 20, 2024



(c) Midwestern Regional Climate Center



## Soil Moisture Deviation from Historical Average – October 16, 2024



<https://cloud.csiss.gmu.edu/Crop-CASMA/>  
*(historical average includes 2015 to current)*

## Access to NASS Reports

For your convenience, you may access NASS reports and products the following ways:

- All reports are available electronically, at no cost, on the NASS web site: <http://www.nass.usda.gov>
- Both national and state specific reports are available via a free e-mail subscription. To set-up this free subscription, visit <http://www.nass.usda.gov> and in the “Follow NASS” box under “Receive reports by Email,” click on “National” or “State” to select the reports you would like to receive.
- Follow us on X @usda\_nass

For more information on NASS surveys and reports, call the Heartland Regional Field Office at (314) 595-9594 or e-mail: [nassrfohlr@usda.gov](mailto:nassrfohlr@usda.gov).