



National Agricultural Statistics Service

Hawaii Agricultural Statistics
Hawaii Department of Agriculture

Hawaii Vegetables

Donald A. Martin, Director

June 2004

Crops conditions improve

Harvested acreage charts page 2

Year-ago, month-ago, current,
and upcoming harvested
acreage.

May review page 3

Production statistics and
comments on selected crops.

2002 Census of Agriculture page 4

Hawaii highlights from the
just-released Census of Agriculture.

Overall, vegetable crops made fair-to-good progress as weather conditions improved during May compared to the previous months. Although Hawaii's wet season ended in April, many areas of the State experienced above normal amounts of rain in May. Most of the rain occurred when a cold front moved eastward through the State from May 14 to 16 generating up to 4 inches of rain on Oahu and lesser amounts on the Big Island. The remnants of this front then moved westward back across the State on May 18 to 21 producing another round of less-intense showers. The other wet period during May occurred during the 3-day period stretching from May 9 to 12 when a shear line passed through the State. Rain fell mainly in the northern and eastern sections of the islands. Between the showers, weather conditions were favorable for crop growth as days were mostly partly sunny to sunny with fresh trade winds.

Changes in harvested acreage will be mixed in June. Harvested acreage for the majority of the 11 selected vegetables in the table below will remain unchanged. The largest increase in harvested acreage is anticipated for **dry onions** which will see a 200 percent increase to 36 acres. **Snap beans** (+8%) and **mustard cabbages** (+45%) are the only other vegetables expected to show an increase in harvested acreage during June. Declines in harvested acreage are forecast for **head cabbage** (-23%), **sweet corn** (-25%), **green onions** (-8%), and **romaine** (-11%).



Acreage

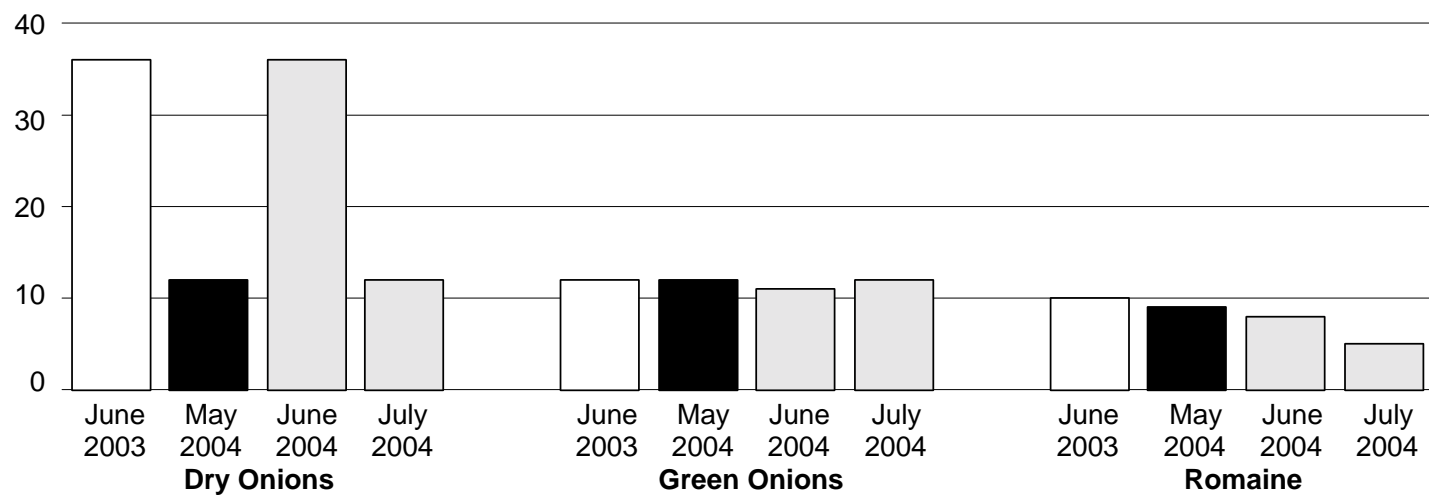
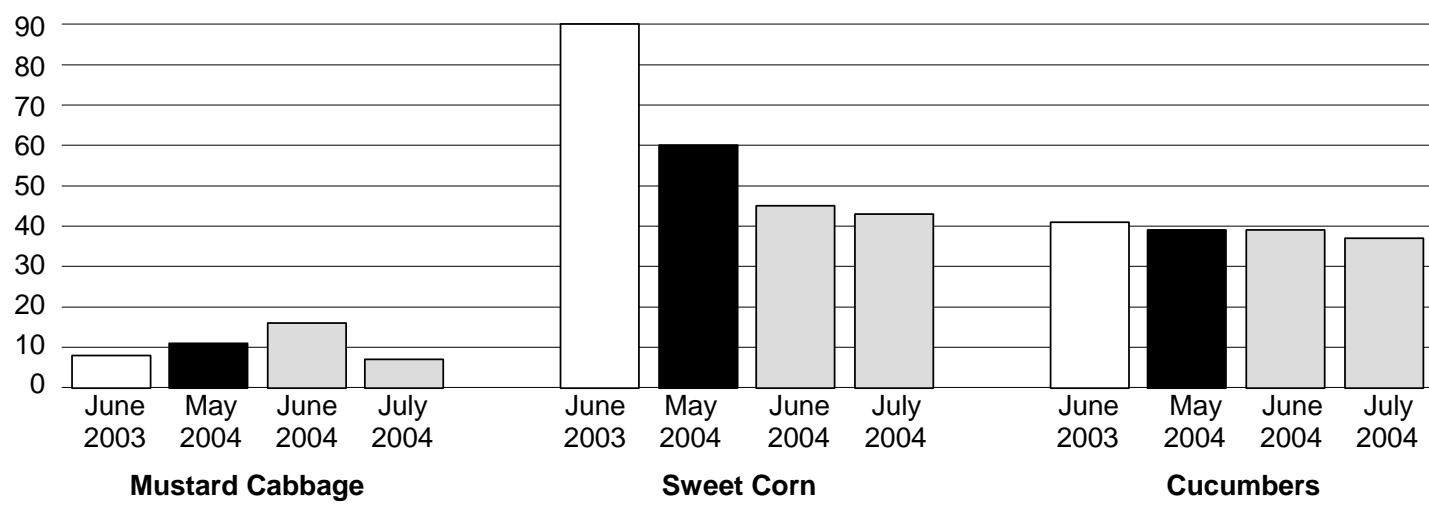
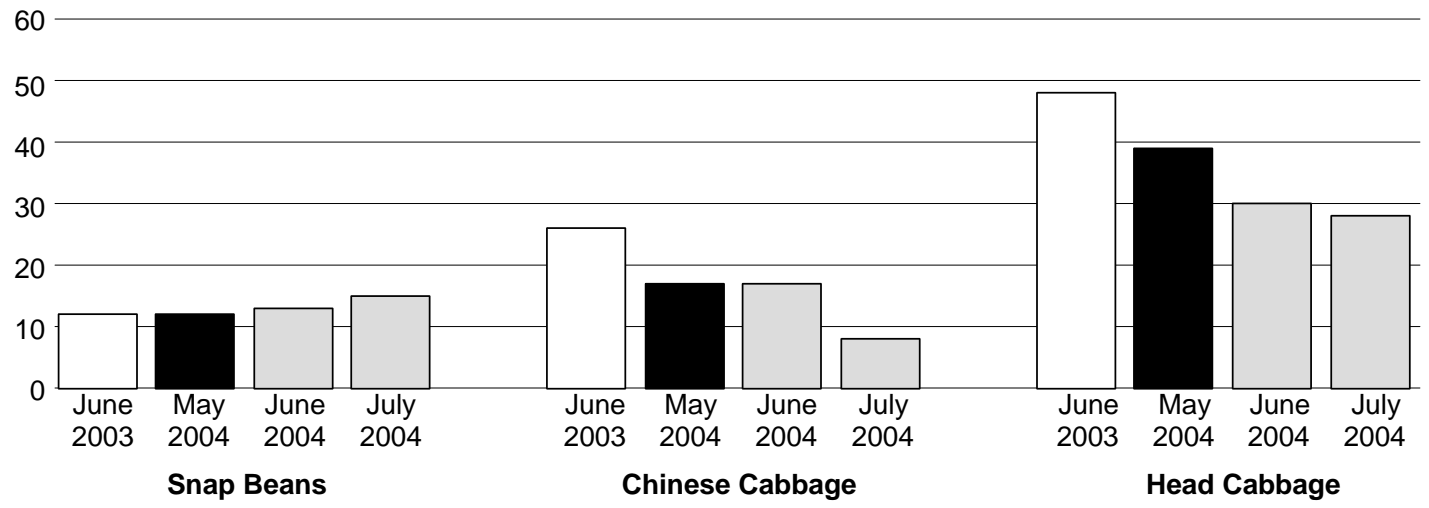
Acres planted, harvested, and for harvest for 11 selected vegetables, State of Hawaii.

Crop	Acres planted		Acres harvested		Acres for harvest	
	Apr 2004	May 2004	Apr 2004	May 2004	Jun 2004	Jul 2004
Beans, snap	10	19	19	12	13	15
Cabbage, Chinese	16	16	25	17	17	8
Cabbage, head	30	31	35	39	30	28
Cabbage, mustard	11	17	17	11	16	7
Corn, sweet	49	45	51	60	45	43
Cucumbers	38	37	39	39	39	37
Lettuce, head	5	6	6	5	5	3
Lettuce, semi-head	4	4	2	4	4	4
Onions, dry	13	10	53	12	36	12
Onions, green	13	12	9	12	11	12
Romaine	8	10	12	9	8	5

Harvested acreage charts

Acres harvested a year ago
 Acres harvested last month
 Acres intended for harvest

Acres



May review

Production continues to increase

CHINESE CABBAGE production is estimated at 465,000 pounds for May, up 19 percent from the previous month but down 18 percent from a year ago. Crop conditions were generally good with light insect and disease damage.

HEAD CABBAGE production totaled 890,000 pounds in May, up 1 percent from April but down 21 percent from a year ago. Most plantings were in good condition. Longer daylight hours and moderate temperatures were beneficial for crop growth.

SWEET CORN production is estimated at 168,000 pounds, up 34 percent from last month but down 44 percent from a year ago. Crop conditions ranged from fair to good.

CUCUMBER production is estimated at 482,000 pounds for May, up 22 percent from last month but down 21 percent from a year ago. Favorable weather enabled plantings to make good progress during May.

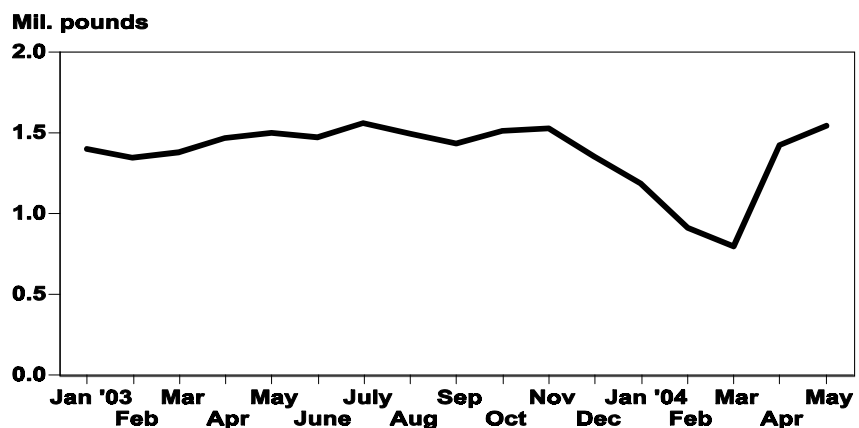
SEMI-HEAD LETTUCE production is anticipated to total 38,000 pounds in

June, up 58 percent from last month and 41 percent more than a year ago. Crop conditions were generally fair.

DRY ONION production is pegged at 125,000 pounds for May, down 24 percent from last month and 67 percent less than a year ago. Most fields were in fair condition.

TOMATO production is estimated at 1.5 million pounds in May, up 9 percent from last month and 3 percent higher than a year ago. Crop conditions were good with favorable flower and fruit set due to beneficial weather conditions.○

**Hawaii Tomatoes:
Monthly Production, 2003 - 2004**



Acres, average yield, sales, and average farm price, May 2004, State of Hawaii.

Crop	Total acres on Jun 1 st	May 2004				January-to-date sales		
		Acres harvested	Average yield ^{1/}	Total sales	Average farm price	2003 ^{2/}	2004	Change
				----- 1,000 lbs. -----	Cents per lb.	----- 1,000 lbs -----		Percent
Beans, snap	28	12	5.2	62	107.1	371	302	-19
Cabbage, Chinese	26	17	27.4	465	26.8	3,304	2,140	-35
Cabbage, head	60	39	22.8	890	26.1	6,312	3,476	-45
Cabbage, mustard	19	11	10.7	118	42.0	569	585	3
Corn, sweet	110	60	2.8	168	46.8	999	584	-42
Cucumbers	61	39	12.4	482	43.1	2,159	1,707	-21
Lettuce, head	8	5	13.0	65	52.7	335	306	-9
Lettuce, semi-head	8	4	9.5	38	75.7	151	111	-26
Onions, dry	59	12	10.4	125	192.7	1,477	412	-72
Onions, green	28	12	8.9	107	88.4	591	422	-29
Peppers, green	^{3/}	20	13.2	263	72.5	1,318	1,246	-5
Romaine	13	9	13.7	123	53.2	874	583	-33
Tomatoes	^{3/}	59	26.2	1,545	71.8	7,108	5,875	-17

^{1/} Total sales divided by acres harvested. ^{2/} Revised. ^{3/} Not published to avoid disclosure of individual operations.

2002 Census of Agriculture Highlights

The first agriculture census was taken in 1840 as part of the sixth decennial census of population. The agriculture census continued to be taken as part of the decennial census through 1950. A separate mid-decade census was conducted in 1925, 1935, and 1945. From 1954 to 1974, the census was taken for the years ending in 4 and 9. In 1976, Congress authorized the census of agriculture to be taken for 1978 and 1982 to adjust the data reference year so that it coincided with other economic censuses. This adjustment in timing established the agriculture census on a 5-year cycle collecting data for years ending in 2 and 7. The 1997 Appropriations Act contained a provision that transferred the responsibility for the census of agriculture from the Bureau of the Census to the U.S. Department of Agriculture (USDA), National Agricultural Statistics Service (NASS). The 2002 Census of Agriculture is the 26th Federal census of agriculture and the second conducted by NASS.

2002 Census of Agriculture Highlights for Hawaii

Number of farms	5,398 farms
Land in farms	1.3 million acres
Family farms as percent of total farms	86 percent
Percent of farms with less than 10 acres	64 percent
Percent of farms with less than \$10,000 in annual sales	56 percent
Average age of farmers	56.5 years old
Percent of women operators	33 percent
Average value of sales per farm	\$98,819
Farm production expenses per farm	\$82,925
Number of farms that sold certified organically produced commodities	140
Value of certified organically produced commodities	\$4.8 million
Percent of farms that use computers for farm business	40 percent

To view the 2002 Census of Agriculture visit our website at <http://www.nass.usda.gov/hi> and click on the "Census of Agriculture" selection.