



National Agricultural Statistics Service

Hawaii Agricultural Statistics Service  
Hawaii Department of Agriculture  
P.O. Box 22159  
Honolulu, HI 96823-2159  
Telephone: (808) 973-9588  
Fax: (808) 973-2909

# Hawaii Seed Crops

Annual report of acreage, outshipments of seed, and value

## Seed industry's value at record \$35 million

The Hawaii Agricultural Statistics Service estimates the value of Hawaii's seed industry at a record high \$35.4 million for the 2000/01 season, up 16 percent from 1999/2000. Seed corn continued to dominate all others with a 2000/01 value of \$33.2 million or 94 percent of the grand total. A variety of other seed crops account for the remaining \$2.2 million or 6 percent.

Outshipments of seed totaled 4.5 million pounds during the 2000/01 season, up 27 percent from the previous season and second only to 1998/99's record high 5.0 million pounds.

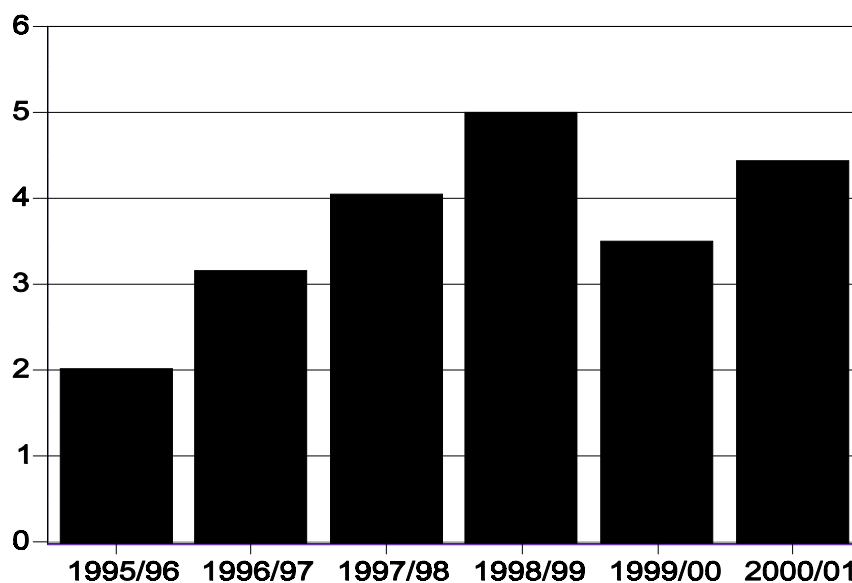
Acreage harvested for all seed crops totaled 2,750 acres during the 2000/01 season, up 12 percent from the previous season.

Hawaii's seed industry did experience a decline in acreage and outshipments of seeds during the 1999/2000 season due to reductions by a major grower. Ironically, those adjustments were partly due to an increase in the operation's efficiency.

### Outshipments of Seeds

State of Hawaii, 1995/96 - 2000/01

Millions of pounds



**Donald A. Martin**  
State Agricultural Statistician

**Ron Nakamura**  
Research Statistician

**Elyse Taka**  
Statistical Assistant

## SEED CROPS

Number of farms, acreage, outshipments, and value  
State of Hawaii, 1995-2000

Crop year <sup>1</sup>	Farms	Acreage				Total outshipments of seed	Value <sup>2</sup>		
		Total	Nursery	Seed increase	Grow-out or observation		Total	Seed corn	Other seed crops
		----- Acres -----				1,000 pounds	----- 1,000 dollars -----		
1995-96	6	1,600	630	910	60	2,025	13,000	12,475	525
1996-97	6	1,780	625	1,060	95	3,160	20,250	19,030	1,220
1997-98	8	2,960	1,040	1,830	90	4,050	25,150	24,684	466
1998-99	8	3,070	1,120	1,870	80	5,000	25,300	24,620	680
1999-00 <sup>3</sup>	8	2,450	1,045	1,300	105	3,500	30,500	28,700	1,800
2000-01 <sup>4</sup>	8	2,750	1,045	1,590	115	4,450	35,400	33,230	2,170

<sup>1</sup> Seed crops are grown year-round in Hawaii with the main season from November to June.

<sup>2</sup> Value is based on sales or gross operational budgets.

<sup>3</sup> Revised.

<sup>4</sup> Preliminary.

U.S. Department of Agriculture  
National Agricultural Statistics Service  
P.O. Box 22159  
Honolulu, HI 96823-2159

**OFFICIAL BUSINESS**  
PENALTY FOR PRIVATE USE, \$300

Return Service Requested

PRESORTED STANDARD Postage and Fees Paid NATIONAL AGRICULTURE STATISTICS SERVICE Permit G-38
--

Annual Seed  
Crop Release