

HAWAII PAPAYAS



National Agricultural Statistics Service

Hawaii Agricultural Statistics Service
Hawaii Department of Agriculture
1428 S King Street, Honolulu, HI 96814-2512
(808) 973-9588
FAX (808) 973-2909
Internet Web Site <http://www.nass.usda.gov/hi>

Frequency: Monthly
Release: January 10, 2003

2002 YEAR-TO-DATE FRESH SALES LOWER

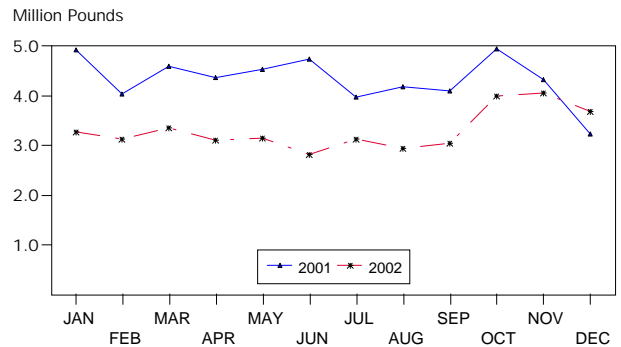
Hawaii fresh papaya utilization is estimated at 3.7 million pounds for December 2002, down 9 percent from last month, but 14 percent above last year. Year-to-date fresh sales were 24 percent lower than the same 12-month period of 2001.

Area in crop totaled 2,075 acres, down 4 and 19 percent from September and last December, respectively. Harvested area, totaling 1,495 acres, was 1 percent lower than September and 18 percent lower than a year ago.

December weather conditions were mostly favorable over major papaya producing areas. Soil moisture was adequate in non-irrigated orchards. Cool temperatures, short daylength, and drier than normal conditions, has slowed fruit maturation.

Papaya growers are expected to receive an estimated 26.0 cents per pound for fresh fruit in December. This is unchanged from last month, but 10 percent (2.9 cents) lower than a year ago.

FRESH PAPAYA UTILIZATION
STATE OF HAWAII, 2001-2002¹



¹ 2002 Preliminary.

HASS

FRESH PAPAYA UTILIZATION, STATE OF HAWAII, MONTH OF: December 2002

Island	Sales				Year ago	Year-to-date	
	Local ¹	Intrastate	Out-of-State	Total fresh		2001	2002
	<i>1,000 pounds</i>						
Hawaii.....	109	1,251	1,900	3,260	2,575	40,290	32,950
Kauai.....	46	4	10	60	100	1,695	1,110
Maui/Molokai/Oahu ²	345	0	20	365	550	10,015	5,705
State.....	500	1,255	1,930	3,685	3,225	52,000	39,765

¹ On island of production.

² Combined to avoid disclosure of individual operations.

DONALD A. MARTIN
State Agricultural Statistician

ARTHUR Y. OSAKI
Research Statistician

SANDY K. NAKASONE
Statistical Assistant

PAPAYA ACREAGE, STATE OF HAWAII, 2002 WITH COMPARISONS

Island	Total acreage in crop							
	March		June		September		December	
	2001	2002	2001	2002	2001	2002	2001	2002
Hawaii.....	2,270	2,200	3,000	1,920	2,360	1,925	2,275	1,850
Kauai.....	120	75	105	75	75	60	80	55
Maui/Molokai/Oahu.....	470	210	430	210	255	185	220	170
State.....	2,860	2,485	3,535	2,205	2,690	2,170	2,575	2,075
	Total bearing acres							
Hawaii.....	1,660	1,700	1,670	1,490	1,675	1,385	1,620	1,385
Kauai.....	85	60	80	60	55	40	60	35
Maui/Molokai/Oahu.....	280	175	285	180	210	85	145	75
State.....	2,025	1,935	2,035	1,730	1,940	1,510	1,825	1,495

FRESH PAPAYA FARM PRICE, STATE OF HAWAII, 2001-2002

Year	Jan.	Feb.	Mar.	Apr.	May	June	July	Aug.	Sep.	Oct.	Nov.	Dec.	Average
	<i>Cents per pound</i>												
2001	23.8	26.9	30.0	31.7	28.3	28.5	30.0	27.7	27.3	26.0	26.5	28.9	27.9
2002 ¹	34.0	35.0	34.0	38.0	42.0	40.0	35.0	34.0	30.0	27.0	26.0	26.0	

¹Preliminary.