

HAWAII PAPAYAS



National Agricultural Statistics Service

Hawaii Agricultural Statistics Service
Hawaii Department of Agriculture
Box 22159, Honolulu, HI 96823-2159
(808) 973-9588
FAX (808) 973-2909
Internet Web Site <http://www.nass.usda.gov/hi>

Frequency: Monthly
Release: November 8, 2001

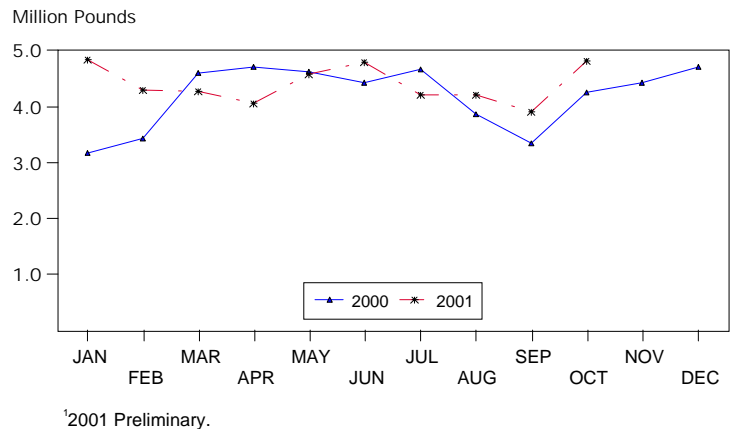
OCTOBER FRESH PAPAYA PRODUCTION UP 23 PERCENT FROM LAST MONTH

Hawaii fresh papaya production is estimated at 4.8 million pounds for October, 23 percent higher than last month and 13 percent more than October 2000. Year-to-date fresh sales were 7 percent higher than the same 10-month period of 2000.

Weather conditions during October were variable with sunshine and showers over major papaya producing areas. Routine field inspections and tree roguing have kept losses light due to papaya ringspot virus.

Papaya growers are expected to receive an estimated 25.0 cents per pound for fresh fruit in October, 7 percent (2.0 cents) lower than last month, but 10 percent higher (2.3 cents) than last year.

FRESH PAPAYA UTILIZATION STATE OF HAWAII, 2000-2001¹



¹2001 Preliminary.

HASS

FRESH PAPAYA UTILIZATION, STATE OF HAWAII, MONTH OF: October 2001

Island	Sales				Year ago	Year-to-date	
	Local ¹	Intrastate	Out-of-State	Total fresh		2000	2001
	<i>1,000 pounds</i>						
Hawaii.....	118	1,452	2,500	4,070	2,990	27,100	33,735
Kauai.....	52	18	30	100	220	3,620	1,460
Maui/Molokai/Oahu ²	630	0	20	650	1,045	10,390	8,800
State.....	800	1,470	2,550	4,820	4,255	41,110	43,995

¹ On island of production.

² Combined to avoid disclosure of individual operations.

PAPAYA ACREAGE, STATE OF HAWAII, 2001 WITH COMPARISONS

Island	Total acreage in crop							
	March		June		September		December	
	2000	2001	2000	2001	2000	2001	2000	2001
Hawaii.....	2,100	2,270	1,600	3,000	2,050	2,360	2,040	
Kauai.....	325	120	340	105	235	75	185	
Maui/Molokai/Oahu.....	665	470	645	430	470	255	470	
State.....	3,090	2,860	2,585	3,535	2,755	2,690	2,695	
	Total bearing acres							
Hawaii.....	1,010	1,660	950	1,670	1,300	1,675	1,495	
Kauai.....	185	85	200	80	160	50	125	
Maui/Molokai/Oahu.....	460	280	435	285	265	200	255	
State.....	1,655	2,025	1,585	2,035	1,725	1,925	1,875	

FRESH PAPAYA FARM PRICE, STATE OF HAWAII, 2000-2001

Year	Jan.	Feb.	Mar.	Apr.	May	June	July	Aug.	Sep.	Oct.	Nov.	Dec.	Average
	<i>Cents per pound</i>												
2000	44.9	44.8	38.8	39.6	26.7	25.7	36.3	34.5	30.2	22.7	21.0	21.0	31.6
2001 ¹	21.0	28.0	32.0	37.0	35.0	32.0	33.0	30.0	27.0	25.0			

¹ Preliminary.