

# HAWAII PAPAYAS



National Agricultural Statistics Service

Hawaii Agricultural Statistics Service  
Hawaii Department of Agriculture  
1428 S King Street, Honolulu, HI 96814-2512  
(808) 973-9588  
FAX (808) 973-2909  
Internet Web Site <http://www.nass.usda.gov/hi>

Frequency: Monthly  
Release: October 22, 2003

## SEPTEMBER FRESH UTILIZATION DOWN 14 PERCENT

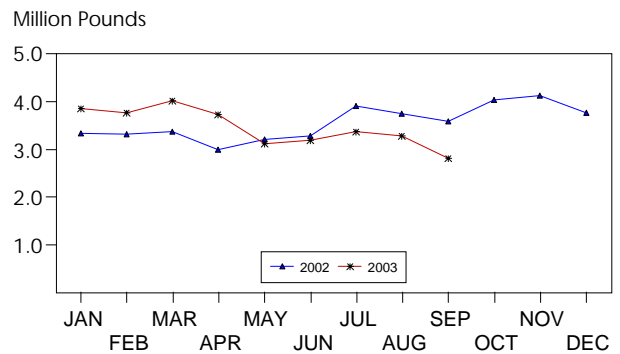
Hawaii fresh papaya utilization is estimated at 2.8 million pounds for September 2003, down 14 percent from last month, and 21 percent lower than September 2002.

Area in crop totaled 2,365 acres, 9 percent higher than June 2003 and a year ago. Harvested area totaled 1,565 acres, 1 percent lower than June 2003, but 4 percent higher than a year ago.

Weather conditions were variable during the month of September. Heavy rains during the beginning of the month were followed by light showers during the rest of September. Soil moisture in non-irrigated orchards were adequate.

Papaya growers are expected to receive an estimated 34.0 cents per pound for fresh fruit in September, 6 percent (2.0 cents) higher than last month, and 26 percent (7.1 cents) higher than a year ago.

## FRESH PAPAYA UTILIZATION STATE OF HAWAII, 2002-2003<sup>1</sup>



<sup>1</sup> 2003 Preliminary.

HASS

## FRESH PAPAYA UTILIZATION, STATE OF HAWAII, MONTH OF: September 2003

Island	Sales				Year ago	Year-to-date	
	Local <sup>1</sup>	Intrastate	Out-of-State	Total fresh		2002	2003
	<i>1,000 pounds</i>						
Hawaii.....	113	972	1,300	2,385	3,130	25,230	27,390
Kauai.....	16	44	5	65	90	920	465
Maui/Molokai/Oahu <sup>2</sup> .....	346	4	20	370	365	4,615	3,315
State.....	475	1,020	1,325	2,820	3,585	30,765	31,170

<sup>1</sup> On island of production.

<sup>2</sup> Combined to avoid disclosure of individual operations.

**PAPAYA ACREAGE, STATE OF HAWAII, 2003 WITH COMPARISONS**

Island	Total acreage in crop							
	March		June		September		December	
	2002	2003	2002	2003	2002	2003	2002	2003
Hawaii.....	2,200	2,015	1,920	1,925	1,925	2,165	1,925	
Kauai.....	80	55	75	65	60	95	55	
Maui/Molokai/Oahu.....	210	185	210	185	185	105	170	
State.....	2,490	2,255	2,205	2,175	2,170	2,365	2,150	
	Total bearing acres							
Hawaii.....	1,700	1,600	1,490	1,440	1,385	1,430	1,465	
Kauai.....	60	40	60	40	40	80	35	
Maui/Molokai/Oahu.....	170	95	175	95	75	55	80	
State.....	1,930	1,735	1,725	1,575	1,500	1,565	1,580	

**FRESH PAPAYA FARM PRICE, STATE OF HAWAII, 2002-2003**

Year	Jan.	Feb.	Mar.	Apr.	May	June	July	Aug.	Sep.	Oct.	Nov.	Dec.	Average
	<i>Cents per pound</i>												
2002	29.4	29.5	28.3	30.2	30.4	28.3	27.9	27.5	26.9	24.9	25.3	26.1	27.7
2003 <sup>1</sup>	28.0	32.0	35.0	36.0	38.0	38.0	35.0	32.0	34.0				

<sup>1</sup>Preliminary.